

Inner City East Linwood Revitalisation Plan

2021-2025

Prepared by the Inner City East – Linwood Revitalisation Working Group,
with and for the local community.





By the community, for the community.

Contents

Foreword	1	Our natural and cultural environment	
Neighbourhood map	2	– greenspaces	10
Working group timeline	2	Greenspaces actions	
Our vision	3	Our assets – opportunities and barriers	12
Our guiding principles		Economic development actions	
Our neighbourhood – context	5	Our Homes – housing and intensification	14
What do we want to take into the future?		Housing actions	
Our people – demographics and dynamics	6	Pride in our neighbourhood	16
People and community actions		Tidiness and appearance actions	
Safety in our community		Getting around our neighbourhood	18
– deprivation and victimisation	8	Transport actions	
Safety and community development actions			

Foreword

This Plan is the result of three years' work by a group of residents from the Linwood Village – Inner City East neighbourhood (ICE) who were assisted by staff from Te Whare Roimata and Christchurch City Council. The group was supported with a grant from the Community Resilience Partnership Fund, which enabled projects to be developed in line with this plan, and enabled local community consultations and community involvement in developing this plan.

Regular community involvement and feedback has ensured the plan is 'community-led'. Meetings and conversations have taken place locally at events, through services and by means of the neighbourhood newsletter, News on ICE.

The group is committed to further community engagement and leadership, as the work evolves from plan development into plan implementation.

The purpose of the plan is to guide the next steps in the revitalisation of the neighbourhood. It articulates the views of the community in relation to how they see the future for the neighbourhood, and identifies the ways that

various agencies can work towards this future. It will be useful as an ongoing reference and guide for stakeholders and the community to support implementation.

The plan is to be read alongside and to support the delivery of both the Linwood Village Master Plan, and Greening the East – a spatial plan for greenspace and amenity enhancement in the neighbourhood.

The plan comprises seven action themes, each with key goals that support revitalisation. Achieving these goals will require groups within the community to pursue, support, and deliver projects. A working group will co-ordinate these activities, and will review the plan to ensure it remains relevant and that progress is made.

Neighbourhood map



Timeline

- 2014–17**

 - Te Whare Roimata facilitates community engagement and action on local issues.
 - ICE Community Survey identifies residents' hopes and concerns.
 - The Council endorses the establishment and funding of the community-led revitalisation project.
- 2017–18**

 - Neighbourhood vision, priority themes, key values and principles identified.
 - Advisory group established, facilitator appointed, working group formed.
 - Themes, vision, values and principles from community conversations form working group agenda.
- 2018–2020**

 - Working group collaborates and engages with stakeholders to address and action themes.
 - Working group develops a process of: analysing issues, organising community voice, drawing up solutions and, where possible, piloting these while seeking community input.
 - Independent evaluation of the project.
- 2021 >**

 - Working group to transition to a more formal structure.
 - Implementation of the project.

Our vision

Our neighbourhood is vibrant, engaged and creative, honouring its rich heritage. People make connections easily, different opinions are heard, and a strong collective voice is nurtured. The community can advocate for itself. People feel safe to live here and to be who they are. Our outdoor environment supports wellbeing for all. Our community honours Te Tiriti o Waitangi, the Treaty of Waitangi, diversity and social justice for all. People are able to put down roots in our community.

Our guiding principles

By the community, for the community



Empower the community, raise awareness, work towards creative local solutions, and build strengths, skills and networks that last.

Equity in development



Economic improvement involves well designed, affordable housing and facilities that support an inclusive community.

Cooperation



Start where people are, work at the community's pace, share a vision, work collectively for change, build relationships, and look for solutions that work for everyone.

Honouring who we are



Respect for our history, culture and diversity; people-centred, Treaty-based and taking a human rights perspective; celebrating successes and strengths.

Goals	
People and community	• Promote neighbourhood identity
	• Community helps and welcomes each other
	• Strong representation
Safety and community development	• Everybody feels safe in the neighbourhood
Greenspaces	• Greenspaces and heritage valued
	• Neighbourhood enriched by greening
	• Connection to Ōtākaro-Avon River Corridor
Economic development	• Thriving local shopping centre
	• Utilisation of neighbourhood assets
Housing	• Housing intensifies in a manner that is respectful
	• Housing affordability and accessibility
Tidiness and appearance	• Derelict properties addressed
	• Berms, parks and streets are maintained
	• Linwood Village is welcoming
	• The neighbourhood shows a sense of pride
Transport	• Needs of vulnerable met
	• Transport improved
	• Transport needs understood



Our neighbourhood

The Inner City East (ICE) is an old and diverse neighbourhood with a rich Christchurch history. The area's unique and quirky identity has grown out of its traditional working class character, its history of being home to many artists over the years and its proximity to the natural beauty of the Ōtākaro-Avon River.

These days it is experiencing the dynamism of the old and the new rubbing shoulders together, with town houses growing up rapidly alongside century-old character cottages. It is also home to many new New Zealanders and is one of the city's most diverse neighbourhoods. The neighbourhood is not without its struggles. It is an area of high deprivation, significantly affected by the economic downturn of the 1980s and 1990s and was hard hit by the Canterbury earthquakes. Over the years, residents have come together to respond to challenges as they arise. These challenges became acute in the post-quake years; with a significant loss of traditionally

low-cost housing, corner shops and the disappearance of important services from Linwood Village.

The community again came together and, facilitated by local community organisation Te Whare Roimata, advocated successfully to the Christchurch City Council for investment in a revitalisation process. The result has been a community-led revitalisation project, in partnership with the Council and the Waikura/Linwood-Central-Heathcote Community Board, and subsequently the creation of this plan.



What do we want to take into the future?



Our people:

Strong supportive relationships, wisdom and experience, gifts, talents and strengths, the richness of diversity.



Our community facilities:

The Linwood Community Arts Centre, Stanmore Book and Post, Linwood Village Market, Te Whare Roimata, Temporary Projects such as Tiny Shops, our parks and green spaces.



Aspects that make this community special:

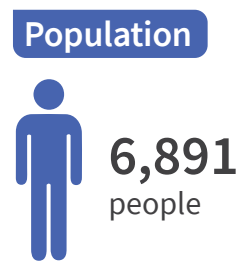
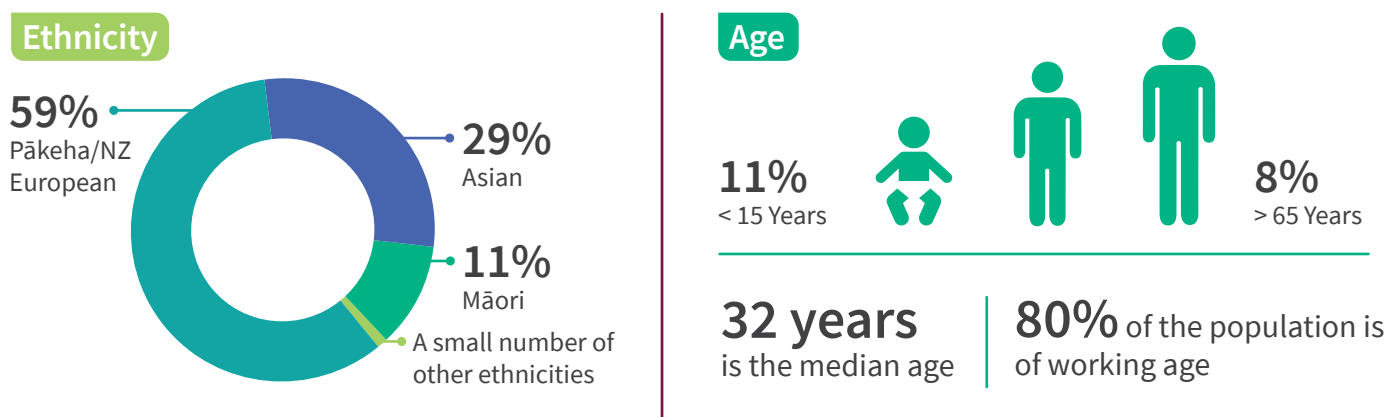
Diversity, funkiness, respect for difference, a rich history, culture and heritage, inclusion and fairness.

Our people – demographics and dynamics

Our people

The community that calls our neighbourhood home is: growing in number, younger, more diverse, less likely to be home owners, less digitally connected, likely to live in smaller households and to have lower incomes than most other Christchurch communities. Significant disparities in health impact these statistics. A snapshot of this is shown here from the 2018 census data* from our neighbourhood.

*The statistical area units (SA2) this data pertains to is Linwood West and Christchurch Central-East



People and community actions – timeline and work to date

2018	2019	2020	2021
Website and Facebook page developed	Photo exhibition on ICE identity and diversity at Linwood Arts and Eastside Gallery	Success in applying for Lotteries Community Facilities Grant for feasibility study for a community gathering place	RSL Consultancy appointed to undertake feasibility study for a community gathering place
Articles contributed to News On ICE on an on-going basis	Development of draft vision and principles for ICE community hub/ gathering place	Census analysis of the ICE area	Steering group of community members established to work with RSL Consultancy
			RSL Consultancy undertakes feasibility study
			ICE Community Walk developed in association with Te Putahi

People and community actions

The Inner City East-Linwood Village community has a great deal of character and a rich history which provides a strong platform for the community to become more connected, more resilient, more able to support its members and to have fun together.

Goals	Actions	Timeframe	Type
Capture, promote and grow the neighbourhood identity	Capture and promote histories	12 months	Project
	Identity and place-based projects (e.g. book fridge, piano, big games)	Ongoing	Project
	Tiny Shops evolution	12 months	Project
A community that welcomes everyone, and helps people build connections	Welcoming of different ethnic groups and new residents	Ongoing	Connection
	Inclusiveness project – neighbours helping neighbours	12 months	Support
	Set up a community Facebook page	3 months	Connection
	Start engaging with different groups	3 months	Connection
	Neighbourhood contact book	12 months	Connection
Strong representation and advocacy for the neighbourhood at a political level about key areas of concern	Continuing working with and developing relationships with politicians	Ongoing	Advocacy
	Advocate for renters rights and encourage renters to put down neighbourhood roots	2 years	Advocacy Connection
	Highlight issues and needs of people in hardship and isolation	Ongoing	Advocacy
	Making submissions in conjunction with other areas	Ongoing	Advocacy
	Participate in wider forums	Ongoing	Advocacy

Council support	Partners
<ul style="list-style-type: none"> • Support community development organisations • Funding for events • Submissions support • Support neighbourhood trials 	<ul style="list-style-type: none"> • Oranga Tamariki • Ōtautahi Community Housing Trust • Christchurch City Mission • Drug-ARM Christchurch • Local members of Parliament • Phillipstown Neighbourhood Policing Team • Linwood-Central-Heathcote Community Board • Ministry of Social Development • Department of Internal Affairs • Department of Corrections • Te Puni Kōkiri • Kāinga Ora – Homes and Communities • Media and Community News • Rātā Foundation • Linwood High School • Christchurch East School • Haven Early Learning Centre • Māori community groups • Businesses in Linwood Village • City-making partners

Safety in our community – deprivation and victimisation

Residents in the Inner City East neighbourhood aspire to live in a safe community, where everyone has a sense of belonging and place. However, some people in the community have identified feeling unsafe, and have noted concerns about the presence of anti-social behaviour throughout the neighbourhood, particularly in Linwood Village.

Several people have raised the need to adopt a rehabilitative approach, as opposed to a ‘get tough’ approach to addressing crime, noting that deprivation is a driver of crime. In the 2018 New Zealand index of Multiple Deprivation (shown below), the area ranks poorly, especially in relation to crime and housing, and there are significant disparities in health and education across the area.

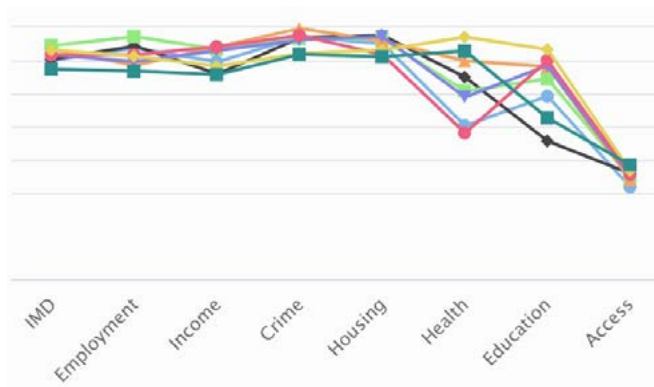
Victimisation

There were 395 people who reported being the victims of crime in our neighbourhood between April 2020 and April 2021. Theft is the most common crime to occur, however 81 people have reported being victims of violent crime.

*Police data - Victimisation Time and Place

Deprivation profile

Most deprived (top of graph) and least deprived (bottom of graph)



The Index of Multiple Deprivation is a set of tools for identifying concentrations of deprivation; each line represents a statistical area within the Inner City East.

imdmapp.auckland.ac.nz

Results from the Life in Christchurch Survey

Walking alone in your neighbourhood during the day

	Our Community	General Christchurch
Very safe	34%	60%
Safe	31.5%	42.9%
Neutral	14.3%	5.8%
Unsafe	7.1%	2.3%
Very Unsafe	1.4%	0.3%

Walking alone in your neighbourhood after dark

	Our Community	General Christchurch
Very safe	4.3%	14.7%
Safe	22.9%	40.1%
Neutral	12.9%	22.8%
Unsafe	40%	17.2%
Very Unsafe	20%	5.1%

In your home after dark

	Our Community	General Christchurch
Very safe	37.1%	47.7%
Safe	45.7%	40.8%
Neutral	12.9%	8.2%
Unsafe	2.9%	2.8%
Very Unsafe	1.4%	0.5%

Safety and community development actions - timeline and work to date

2018	2019	2020	2021
Safety survey of local residents	Good Sort person presence in Linwood Village	Interagency community safety group (safety group) established	Safety group and locals establish process for incident response in village
	Engagement with Phillipstown Community Policing Team on presence in Linwood village	Safety group explores pop-up clinic for agencies in Linwood Village (Unsuccessful)	Workshop held to discuss an integrated response to safety – neighbouring communities invited
	Engagement with Housing NZ (now Kāinga Ora) on safety and community integration		

Safety and community development actions

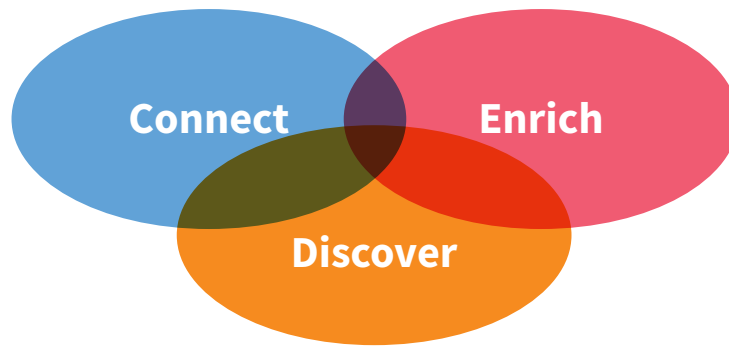
Successfully addressing these matters will need to include a whole-of-community approach to support safety, improve perceptions, enhance belonging, reduce anti-social behaviour, and to support those participating in this behaviour to find pathways to wellbeing, social connection and positive futures.

Goals	Actions	Timeframe	Type
Everyone feels safe in our streets, parks and other places around our neighbourhood	Raise the perspective of the discussion to highlight and address the drivers of antisocial behaviour and crime	6 -12 months	Discussion Advocacy
	Plan long term approaches	6 -12 months	Project
	Encourage “105-111” reporting and engage with the police to improve attentiveness and response to reporting to encourage confidence	6 months	Project Advocacy
	Advocate for resources for Stanmore Road; detached social worker; additional community development	6 months	Advocacy Connection
	Promote kindness and empathy	Ongoing	Advocacy
	Promote harm minimisation approaches	Ongoing	Advocacy
	Develop cultural response	6 -12 months	Connection
	Advocate for best practice approach to addressing begging	6 -12 months	Advocacy Promotion

Council support	Partners
<ul style="list-style-type: none"> • Policy support • Support community development organisations • Crime prevention cameras • CPTED improvements 	<ul style="list-style-type: none"> • Oranga Tamariki • Ōtautahi Community Housing Trust • Christchurch City Mission • Drug-ARM Christchurch • Local members of Parliament • Phillipstown Neighbourhood Policing Team • Linwood-Central-Heathcote Community Board • Ministry of Social Development • Department of Internal Affairs • Department of Corrections • Te Puni Kōkiri • Kāinga Ora – Homes and Communities • Media and Community News • Rātā Foundation • Christchurch Central Services

Our natural and cultural environment – greenspaces

There is a relative lack of green space and tree canopy in the Inner City East Linwood neighbourhood. Further intensification is making this situation worse, as established gardens are replaced with housing. To alleviate this impact the revitalisation group came together with the community board and developed the Greening the East Plan. This will guide development and enhancement of greenspaces within the neighbourhood. Consideration is given in the plan to the multiple values of greenspaces and of the rich ecological and cultural heritage within the area. The plan was informed by the three guiding outcomes:



2018	2019	2020	2021
Working group forms a greenspaces action group	Greenspaces group undertakes audit of local greenspaces and holds summer engagement events	Joint working party established to prepare the Greening the East Plan	Greening the East Plan finalised and some 'quick win' projects implemented
Waikura/Linwood-Central-Heathcote Community Board proposes Greening the East project			Working group's Long Term Plan submission advocates for Greening the East Plan



Greenspaces actions

The Inner City East/Linwood Village community will continue to advocate for the implementation, and participation in the greenspace goals of the Greening the East Plan.

Goals	Actions	Timeframe	Type
Green spaces and the natural and cultural heritage of the area are incredibly valued	Advocate for Greening the East implementation	Ongoing / 3 years	Advocacy
	Creative narrative details for the spaces around the neighbourhood	12 months	Project
	Support community safety initiatives in parks	12 months	Project
	Work with neighbouring communities on greening and heritage partnerships	3 years	Projects
The neighbourhood enriched by more street trees, more small parks, improvements in the play spaces, and biodiversity enhancement, to support nature-based connection through the neighbourhood	Advocate for Greening the East implementation, particularly addressing the long blocks	Ongoing / 3 years	Advocacy
	Involvement of the community in on the ground initiatives	Now / Ongoing	Connection / Project
There is a strong connection to the Ōtākaro-Avon River Corridor	Advocate for Greening the East implementation	Ongoing / 3 years	Advocacy

Council support	Partners
<ul style="list-style-type: none"> • Doris Lusk Play Sculpture delivery • Ōtākaro-Avon River Corridor regeneration • Greening the East implementation • Uphold level of service agreements for maintenance of streets and parks • Deliver on the Linwood Village Streetscape Enhancement project 	<ul style="list-style-type: none"> • Land owners • Businesses in Village • Linwood Central Heathcote Community Board • Environment Canterbury (ECan) • Department of Internal Affairs • Keep Christchurch Beautiful • Kāinga Ora – Homes and Communities • Ōtautahi Community Housing Trust • Greening the Red-Zone • Avon-Ōtākaro Network • Canterbury Community Gardens Association

Our assets – opportunities and barriers

The community is home to a number of talented individuals, businesses and support networks. Opportunities exist to grow and utilise these assets. However, economic struggles do exist.

Whilst a larger percentage of local residents participate in work (72%) compared to Christchurch generally (64%), this work tends to be characterised by low pay, long hours and job insecurity.

Alongside high levels of employment is a higher rate of unemployment and welfare support (15%) than the rest of Christchurch (9%). There is a significantly lower percentage of recipients of superannuation (10%) than Christchurch as a whole (19%).

Business success in the area is mixed. Some have struggled, and shop vacancies remains a key issue in Linwood Village. However, these key institutions are very well liked and well supported locally.

Popular neighbourhood businesses

Pomeroy's Pub | Linwood Village shops | Stanmore Book & Post | Pharmacy | Under the Red Verandah

Sources of Income

- 72% Salary and wages
- 15% Unemployment and welfare
- 10% Superannuation

Common occupations

- Technical roles
- Trades
- Professionals
- Managerial

Median income

- \$32,900 – Overall for the area
- \$37,800 – Inner City East
- \$28,300 – Linwood West

Economic development actions – timeline and work to date

2018	2019	2020	2021
Community analysis of the Linwood Village Master Plan	Successful advocacy for bringing forward funding for Linwood Village streetscape upgrade	Design of a community engagement proposal for streetscape upgrade of Linwood Village	Supporting a Lincoln University research project and report on 'Practising Urbanism' in Linwood Village
Scoping of the impact for communities of recent streetscape upgrade projects in other suburbs and the central city	Advocating for Linwood Village to be identified as a gateway to the former Residential Red Zone		Early engagement with Council on Linwood Village streetscape upgrade
	Supporting a University of Canterbury research project about food scarcity in the Inner City East area		Engagement with business community in Linwood Village

Economic development actions

Linwood Village is struggling with economic development, yet has potential to meet the shopping needs of locals and to play a key role as a gateway to the Ōtākaro-Avon River Corridor. The community could come together to address economic opportunities with residents who face barriers to, or do not have access to, employment.

Goals	Actions	Timeframe	Type
A thriving local shopping centre that supports daily purchase needs, and provides opportunities for people to connect	Develop a business association	3 months	Support
	Encourage social enterprise and community owned enterprise	3 years	Support
	Host events in collaboration with businesses	Annually	Event
	Village tidy up/spring clean/spruce up	Annually	Event
	Promote shops and businesses that locals want and need	3 years	Advocacy
Utilisation of neighbourhood assets	Continue to find meaningful roles for Corrections/MSD/Te Whare Roimata labour pools	Ongoing / 12 months	Connection
	Build capital/social skills and assets in the community	3 years	Support

Council support	Partners
<ul style="list-style-type: none"> • Business Improvement District Grant funding • Action results from Sustainable Floorspace Study • Event permits/support • Uphold level of service agreements for maintenance of streets and parks • Deliver on the Linwood Village Streetscape Enhancement Project 	<ul style="list-style-type: none"> • Land owners • Businesses in Village • Local Members of Parliament • Phillipstown Neighbourhood Policing Team • Migrant groups • Linwood-Central-Heathcote Community Board • Ministry of Social Development • Department of Internal Affairs • Department of Corrections • Te Puni Kōkiri • Kāinga Ora – Homes and Communities



Wendy Morrison, Te Whare Roimata

Our homes – housing and intensification

The neighbourhood is a mix of old and new homes, rented homes, owned homes, long-term residents, and people who have just moved in. Some of the homes are of poor quality – both old houses that have been neglected, and more recently built houses designed poorly. Some homes are great examples of housing, both character homes that have been lovingly restored and respectfully upgraded, and more recent builds that support a sense of community and respect the neighbourhood they’ve been built in.

The mix of households is equally diverse. Over half of households are single occupants or couples and there are fewer families with children (just 20%) than in Christchurch as a whole. Overall, the household make-up is distinctively different from Christchurch generally, reflecting a changing and evolving neighbourhood. Post-quake housing is built for a different target market than the homes of the past, particularly bedsit accommodation providing homes for single people.

The neighbourhood is less digitally connected than Christchurch as a whole: only 69% of households have access to the internet, and 75% have access to a mobile, compared with 81% and 86% respectively, for the city average.

Median Weekly Rent ^{*MBIE data}



- \$180 – a room
- \$205 –one-bedroom boarding house
- \$260 –one-bedroom flat
- \$320 –two-bedroom flat
- \$350 –two-bedroom apartment
- \$355 –two-bedroom house
- \$420 –three-bedroom house

Household make-up



- 34% one person
- 20% couple only
- 8% sole parent
- 12% couple with children

Homes in our neighbourhood



- 19th Century
- Early 20th Century
- Late 20th Century
- Recent intensification

Housing actions – timeline and work to date

2018	2019	2020	2021
	Collaboration with the Inner City Action Network on regulatory issues in the Four Avenues neighbourhoods	Submission to Council on home-share accommodation	Attendance with other inner city neighbourhood groups at Central City Action Plan meetings
	Engagement with Housing NZ (now Kāinga Ora) on safety and community integration		

Housing actions

The neighbourhood is facing two key housing issues: the effects of intensification, and the loss of affordable housing opportunities for existing residents. Similarly, there has been inadequate replacement of lost low-cost bedsit accommodation. The neighbourhood also retains a significant number of character homes and there is a desire to see these retained.

Goals	Actions	Timeframe	Type
Housing intensifies in a manner that is respectful of our neighbourhood vision, acknowledges the reality of the neighbourhood, and promotes a positive future while honouring our rich heritage and supporting inclusiveness	Create a community assets map, and find ways to share and maximise these assets	6 months	Project
	Create narrative about growth and shape it positively	12 months	Engagement
	Advocate with agencies of influence; ensuring their housing decisions are positive for the neighbourhood	12 months	Advocacy
	Encourage developers towards well-designed intensification	2 years	Advocacy
	Work with neighbouring communities on similar issues	2 years	Advocacy/ Connection
Housing affordability and accessibility for all residents is protected	Lobby for affordable, healthy, safe, and secure housing	2 years	Advocacy
	Advocate for community and alternative financing schemes	2 years	Advocacy
	Promote mixed tenure public housing developments	2 years	Advocacy

Council support	Partners
<ul style="list-style-type: none"> Take community on a journey with intensification Invest in amenity and neighbourhood enhancements alongside intensification Work with developers to encourage great examples of intensification 	<ul style="list-style-type: none"> Land owners Linwood-Central-Heathcote Community Board Property developers Te Puni Kōkiri Ministry of Social Development Department of Internal Affairs Housing First Christchurch Kāinga Ora – Homes and Communities Ōtautahi Community Housing Trust Department of Corrections



Pride in our neighbourhood

The tidiness and appearance of the neighbourhood is an area of concern for the community, particularly with respect to several derelict buildings, vacant sites, poorly kept berms and rubbish in the streets. Some of these problem sites are the result of earthquake damage which is yet to be attended to by site owners. Local residents have said clearly that they want to see empty sections tidied, earthquake damage repaired, and maintenance improved. Meanwhile, the planned streetscape enhancement of Linwood Village will address some of the appearance issues for the central hub of activity in the area.

Tidiness and appearance actions – timeline and work to date

2018	2019	2020	2021
Tidiness audit of inorganic rubbish on neighbourhood streets	Mattress recycling social enterprise scoped and engagement with three local Councils	Gardening and local maintenance of street planters and vacant sites ongoing	Streetscape Enhancement Engagement
First annual community clean-up day	Second annual community clean-up day		
Inorganic rubbish collection pilot begins with Te Whare Roimata Labour Pool	Engagement and encouragement of vacant sites land owners regarding appearance		



Linwood Community Arts Centre

Tidiness and appearance actions

The community has worked to address this issue over the past few years with annual community clean-up days that are well attended and a successful pilot scheme to collect inorganic rubbish from the streets. The aim is to create a neighbourhood that residents can be proud of, and that includes a village that reflects the identity, the character and the diversity of the people who live in the area.

Goals	Actions	Timeframe	Type
Derelict properties are tidied and addressed	Keep eyes on street	Ongoing	Connection
	Report nuisance to Council enforcement	12 months	Advocacy
	Report and address graffiti	Ongoing	Connection
Our berms, parks and streets are well maintained attractive places	Promote Snap, Send, Solve	Ongoing	Advocacy
	Report maintenance issues to Council	Ongoing	Advocacy
	Spring Clean Day	Annually	Event
	Inorganic waste is removed from street	Ongoing	Connection
Linwood Village is tidy, attractive and welcoming	Regular tidy-up days (alongside village market days)	Over summer	Event
	Engage with businesses to clean up sites and buildings	Ongoing	Advocacy
The neighbourhood shows a sense of pride	Host events	Annually	Event
	Communications	Ongoing	Connection
	Small actions	Ongoing	Projects
	Sponsorship/ownership	Ongoing	Connection

Council support	Partners
<ul style="list-style-type: none"> Follow up on enforcement complaints Work with owners of vacant sites Greening the East implementation Uphold level of service agreements for maintenance of streets and parks Deliver on the Linwood Village Streetscape Enhancement Project Address inorganic waste promptly on streets and in parks 	<ul style="list-style-type: none"> Land owners Businesses in village Keep Christchurch Beautiful City-making partners - (Gapfiller, Green Lab, Te Pūtahi) Linwood-Central-Heathcote Community Board Phillipstown Neighbourhood Policing Team Te Whare Roimata labour pool

Getting around our neighbourhood

A significant number of residents in the Inner City East are disadvantaged with respect to the accessibility and affordability of transport. This includes people with disabilities, those without access to a private vehicle, those of lower socio-economic status, and those whose access needs have been severely affected by the earthquakes. Fifteen per cent of households do not have a motor vehicle, compared with seven per cent of households in Christchurch as a whole. The neighbourhood’s very long blocks also present a challenge for pedestrians.

Transport actions – timeline and work to date

2018	2019	2020	2021
Local public transport needs survey	Engagement with Council staff on safety concerns regarding the Rapanui Shag Rock cycleway	Submission to Ecan’s annual plan on demand responsive transport in Inner City East	
Submission to ECAN on public transport needs in Inner City East			



Linwood Community Arts Centre

Transport actions

Strong links to and through the Inner City East neighbourhood are needed in order to support the community to thrive. However, the community has advocated against simply becoming a public transport thoroughfare from the suburbs to the central city. Public transport in and around the neighbourhood is also needed and is an issue that could usefully be explored with respect to demand-responsive solutions. Additionally, with many residents cycling or walking, it will be important to look at options that make these forms of mobility both safe and pleasant.

Goals	Actions	Timeframe	Type
The needs of the most vulnerable community members are met	Conduct a youth needs assessment	12 months	Connection
	Advocate for subsidised travel options and demand-based responsive transport development	2 years	Advocacy
	Support trips for older, less mobile people, 'adventure, shopping, art visits'	2 years	Connection
Great services of transport for all	Advocate for a Stanmore Road green corridor to Ōtākaro-Avon River	2 years	Advocacy
	Advocate for safer pedestrian environment and more inviting experience	6 months	Advocacy
	Advocate for better bus services	2 years	Advocacy
The transport needs of the area are understood and responsively met	Audit of the communities' transport needs	2 years	Connection
	Participation in engagement for road improvements and transport projects of ECan and Council	3 years	Engage

Council support	Partners
<ul style="list-style-type: none"> Audit transport assets and condition in the neighbourhood Provide support for good bus services and infrastructure Improve road and footpath conditions Support alternative transport option development 	<ul style="list-style-type: none"> Linwood Central Heathcote Community Board Environment Canterbury (ECan) Canterbury District Health Board (CDHB)

Inner City East Linwood Revitalisation Plan

2021-2025