




Draft Long Term Plan 2021-31

Activity Plan

Wastewater collection treatment and disposal

Adopted 4 March 2021

Approvals

Role	Position	Name	For Draft LTP	
			Signature	Date of sign-off
General Manager	GM City Services (acting)	Carolyn Gallagher		04/02/2021
Finance Business Partner	Finance Business Partner	Peter Langbein		12/02/2021
Activity Manager	Head of Three Waters & Waste	Helen Beaumont		02/02/2021

Authors and Advisors to this Activity Plan

Group	Business Unit	Position	Name
City Services	3 Waters	Team Leader Asset Management	Mark Johnson
City Services	3 Waters	Asset Engineer - Planning	Michael Galambos

Table of Contents

- 1. What does this activity deliver?4
- 2. Community Outcomes – why do we deliver this activity?6
- 3. Strategic Priorities – how does this activity support progress on our priorities ?7
- 4. Increasing Resilience 10
- 5. Specify Levels of Service 11
- 6. Does this Activity Plan need to change as a result of a Service Delivery Review (S17A)?..... 25
- 7. What levels of service are we proposing to change from the LTP 2018-28 and why? 26
- 8. How will the assets be managed to deliver the services?..... 33
- 9. What financial resources are needed?..... 36
- 10. How much capital expenditure will be spent, on what category of asset, and what are the key capital projects for this activity? 41
- 11. Does this activity have any significant negative effects on social, economic, environmental or cultural wellbeing, now or in the future? 48
- 12. What risks are identified and what controls and mitigations are planned?..... 51

1. What does this activity deliver?

We're investing in Christchurch's future

This document outlines the wastewater infrastructure and services we propose to invest in over the next 10 years to safeguard public health and protect the environment. It is based on the recommendations documented within the council's wastewater [asset management plan](#). This includes a summary of the investment required to meet future demand, prevent further deterioration of network infrastructure and maintain current levels of service. It gives Christchurch residents the opportunity to join the conversation by telling us what matters to them.

What we provide

Every day Christchurch City Council (Council) delivers safe drinking water to homes and businesses. Some of this water is used outside (watering your garden), but most is used inside your house; in the bathroom, kitchen or laundry. Once used, this water leaves your home as wastewater (also known as sewage), through your plumbing and into the public wastewater network. Council's wastewater network carries a combination of residential and business waste.

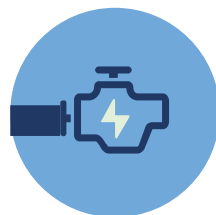
Wastewater contains 99% water and about 1% human and other waste. Because the waste component contains bacteria and viruses that could be harmful to human health, it's important it is kept separate from the drinking water network. Furthermore nutrients from the waste component can overload receiving ecosystems if discharged untreated. The wastewater network collects all wastewater from connected properties for treatment at one of Council's treatment plants, before discharge to sea or land irrigation.

The Council collects wastewater from approximately 160,000 customers in Christchurch, Lyttelton, Diamond Harbour, Governors Bay, Akaroa, Duvauchelle, Tikao Bay and Wainui. It treats this wastewater at eight treatment plants and disposes the treated wastewater into the sea and to land irrigation schemes. The key assets Council manage in relation to wastewater collection, treatment and disposal include:



Reticulation

- 1,622 km gravity wastewater mains
- 253 km pressure wastewater mains
- 61 km vacuum wastewater mains
- 1,000 km wastewater laterals
- 27,666 manholes
- 9,405 local pressure sewer system tanks
- 4,353 vacuum sewer system chambers



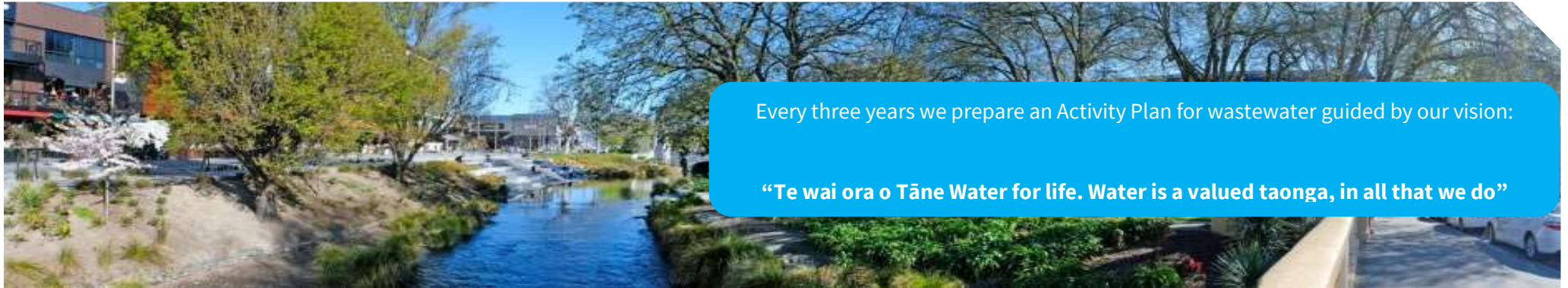
Pumping (collection)

- 150 pump stations
- 84 lift stations
- 3 vacuum stations
- 248 pump station control systems
- 34 odour control sites



Treatment & Disposal

- 8 wastewater treatment plants
- 1 outfall pump station
- 6 ocean / harbour outfalls
- 2 land irrigation schemes



Every three years we prepare an Activity Plan for wastewater guided by our vision:

“Te wai ora o Tāne Water for life. Water is a valued taonga, in all that we do”

Achieving the vision will mean that water resources and taonga are managed in an integrated way to provide people, communities and future generations with access to safe and sufficient water resources, maintain the integrity of freshwater ecosystems and manage hazards from flooding and sea level rise.

The key wastewater activities that Council undertakes include:

Wastewater monitoring and control

Monitoring and control of wastewater flow and quality, including the social, cultural, environmental, economic and technological impacts of wastewater operations.

Inflow and infiltration control

Inflow refers to stormwater entering the wastewater network. Excess stormwater can overload the system and result in untreated wastewater entering the environment. Infiltration describes the entry of groundwater into the network, through damaged pipes, which can also contribute to wastewater entering the environment. The Council aims to reduce inflow and infiltration so that our wastewater systems are not overloaded and to reduce wastewater overflows to the environment. Current estimations show the proportion of Inflow and Infiltration to be 30% of the total annual flow to the Christchurch wastewater treatment plant. During storm events inflow and infiltration can more than triple instantaneous flows.

Wastewater overflow management

Overflows occur when wastewater enters public or private property, waterways and the sea. They occur when the wastewater, inflow and infiltration volumes are

greater than pipes can carry, typically during heavy rainfall events, or when wastewater pipes become blocked. To reduce overflows, the Council cleans wastewater pipes that are prone to blocking and repairs or replaces leaky wastewater pipes through its renewal programme.

Wastewater treatment

Wastewater is transported along the network to a wastewater treatment plant where it is treated, before being discharged to the land or sea. The Council is responsible for planning, constructing, operating and maintaining a cost-effective and resilient wastewater collection, treatment and disposal system.

Treatment by-product management

Wastewater treatment practices create various by-products, such as sludge and gases that either need to be disposed of, re-used or destroyed. A key Council wastewater activity is the efficient treatment, disposal and/or recycling of wastewater treatment by-products.

Laboratory services

Laboratory services monitor and analyse treatment processes and products to demonstrate compliance with consent discharge conditions.

2. Community Outcomes – why do we deliver this activity?

	Community Outcomes	Describe in 2-3 sentences how the activity effects the Community Outcome.
Primary Outcome 1	Safe and healthy communities	Protecting public health by limiting exposure to human waste in accordance with: <ul style="list-style-type: none"> • Health Act 1956 • Hazardous Substances and New Organisms Act 1996 • Resource Management Act 1991 • Health and Safety at Work Act 2015 • Water Supply, Wastewater and Stormwater Bylaw 2014 • Trade Waste Bylaw 2015
Primary Outcome 2	Healthy water bodies	Reducing wastewater overflows to waterways
Secondary Outcome 1	Modern and robust city infrastructure and facilities network	We strive for a resilient public drinking water supply network, to support a healthy community, healthy environment and prosperous economy by: <ul style="list-style-type: none"> • Minimising damage from natural disasters by setting minimum requirements for new infrastructure. • Gathering an evidence base to support asset lifecycle decision making. • Performing lifecycle management to minimise whole of life costs. • Minimising service disruptions. • Setting requirements for network condition and performance.
Secondary Outcome 2	Sustainable use of resources and minimising waste	Limiting resource use and encouraging by-product re-use
Secondary Outcome 3	Great place for people, business and investment	<ul style="list-style-type: none"> • We strive to manage costs and intergenerational debt by: • Controlling costs to minimise rates increases • Maintaining networks to prevent future generations inheriting a network in need of significant expenditure.

The information below summarises how the wastewater collection, treatment and disposal activities contribute to Council's community outcomes.

PRIMARY OUTCOME - SAFE AND HEALTHY COMMUNITIES

We manage wastewater treatment and disposal to protect human health by:

- Limiting exposure to human waste in accordance with legislation and regulations

PRIMARY OUTCOME - HEALTHY WATER BODIES

We sustainably manage the environmental impacts of wastewater services by:

- Reducing wastewater overflows to waterways

SECONDARY OUTCOME - SUSTAINABLE USE OF RESOURCES AND MINIMISING WASTE

We manage the wastewater network in a way that promotes sustainable use of resources, energy efficiency and resilience by:

- Encouraging the re-use of by-products generated through the wastewater treatment process, such as the use of methane in energy production and dried sludge for land remediation

SECONDARY OUTCOME - MODERN AND ROBUST CITY INFRASTRUCTURE AND FACILITIES

We strive for an efficient, sustainable and resilient wastewater network to support a healthy community, environment and prosperous economy by:

- Setting minimum requirements for network condition and performance

SECONDARY OUTCOME - GREAT PLACE FOR PEOPLE, BUSINESS AND INVESTMENT

We control costs to minimise rates increases:

- Controlling costs to minimise rates increases
- Maintaining networks to prevent future generations inheriting a network in need of significant expenditure



3. Strategic Priorities – how does this activity support progress on our priorities?

Strategic Priorities	Activity Responses
Enabling active and connected communities to own their future	Active citizenship supported and promoted via <ul style="list-style-type: none"> • support to water management zone committee activities and projects • community working parties for major wastewater projects (e.g. Duvauchelle wastewater working party) • annual residents surveys, including obtaining views on wastewater services
Meeting the challenge of climate change through every means available	Supporting climate change leadership by: <ul style="list-style-type: none"> • tracking energy use and greenhouse gas emissions associated with wastewater services through the resource efficiency and greenhouse gas emissions dashboard • biogas production and generation of energy from biogas at the Bromley wastewater treatment plant • considering carbon as part of project lifecycle costs for major wastewater projects
Ensuring a high quality drinking water supply that is safe and sustainable	Efficient, effective and resilient wastewater services support high quality drinking water that is safe and sustainable by: <ul style="list-style-type: none"> • reducing the risk of contaminating source water by reducing wastewater overflows and renewing leaky wastewater pipes
Ensuring healthy water bodies	Efficient, effective and resilient wastewater services healthy water bodies by: <ul style="list-style-type: none"> • reducing wastewater overflows
Accelerating the momentum the city needs	Efficient and resilient wastewater services support a healthy economy by: <ul style="list-style-type: none"> • providing reliable and resilient wastewater services
Ensuring rates are affordable and sustainable	<ul style="list-style-type: none"> • reducing expenditure on wastewater services

Our wastewater initiatives over the next ten years will also contribute to Council’s strategic priorities by:



Enabling active and connected communities to own their future

- Supporting water zone committee activities
- Increasing customer engagement and consultation through community working parties for major wastewater projects e.g. Duvauchelle wastewater treatment plant



Meeting the challenge of climate change through every means available

- Tracking energy use and greenhouse gas emissions from Council wastewater activities
- Generating electricity from biogas at the Christchurch wastewater treatment plant
- Considering carbon emissions in large wastewater projects



Ensuring a high quality drinking water supply that is safe and sustainable

- Reducing the risk of contaminating drinking water by reducing wastewater overflows and renewing leaky wastewater pipes



Ensuring healthy water bodies

- Reducing dry and wet weather overflows that can pollute waterways



Accelerating the momentum the city needs

- Providing reliable and resilient wastewater services



Ensuring rates are affordable and sustainable

- Reducing expenditure on wastewater services

4. Increasing Resilience

Council monitors and manages a number of risks in relation to wastewater and undertakes improvements to improve resilience to man-made and natural hazards.

Natural Disasters

Earthquakes: Earthquakes can cause damage to wastewater networks and wastewater treatment plants. New infrastructure is designed to be resilient to earthquakes. In areas with a high risk of liquefaction changes from traditional gravity sewers to local pressure sewer systems or vacuum sewer systems provide a more resilient network.

Tsunamis: A tsunami could cause damage to low lying wastewater assets near the coast (e.g. wastewater treatment plants, pipes and pump stations).

Climate Change

Sea Level Rise: Sea level rise and coastal erosion may make it difficult to service some properties in the future. Increased levels of salt water in the groundwater may also damage assets in coastal areas. Increased groundwater levels will increase infiltration.

Council modelling suggests that sea level rise could impact 12 percent of wastewater pipe renewals by 2065 and a further eight percent by 2120.

Higher Temperatures: Higher temperatures could create a change in bacterial conditions and could lead to increased odour and corrosion. It could also result in improved nitrogen removal at wastewater treatment plants.

Increased Rainfall: Increased high intensity rainfall may lead to an increased risk of flooding and wet weather overflows. Wet weather overflows occur



when an increased rainfall event leads to stormwater entering the wastewater network. This can result in wastewater overflowing into rivers, streams, or the ocean.

Wastewater overflows are a public health risk and can cause damage to natural heritage, cultural heritage or disruption to the city and the economy. Flooded areas also need to be pumped out and cleaned, which causes reduced or impaired service and increased costs to Council.

Public Health: Wastewater is a risk to public health if it is not managed safely. The Council's Wastewater Network Improvement Programme aims to reduce overflows, mitigating the impact on population and environmental health. The Wastewater Renewal Programme will further reduce the likelihood of

untreated wastewater entering the environment by replacing assets with the highest impact (should a failure occur) and the assets most likely to fail.

Societal Changes

Environmental Standards: Stricter consent conditions or standards may be imposed on overflows or treated wastewater discharges in the future.

Social Inequity: The cost of wastewater management is currently paid by home-owners through general rates. Council is considering charging for water and wastewater based on water usage. This means those who use less water will pay less. Desires to eliminate or limit rate rises in the short term will result in an increased financial burden on future generations due to deterioration in wastewater networks.

Business as Usual

Aging Pipe Networks: Historic underinvestment, aging pipes and the legacy of earthquake damage means that our wastewater network is deteriorating with a corresponding increase in the risk of failure. With more very poor condition pipes, inflow and infiltration will increase resulting in more overflows and increased pumping and treatment costs. Based on funding available we expect the proportion of very poor condition pipes to increase to 27% by 2039 before beginning to decrease to 19% in 2051.

5. Specify Levels of Service

Council's Levels of Service (LoS) measures enable us to monitor and report against our outcomes and service performance. To support the Activity Plan for wastewater we have produced a set of quantitative outcomes and outputs to track the contribution of wastewater over time. In this Long Term Plan the LoS are grouped under each of the community outcomes to clearly demonstrate the linkage between what we do, why we do it and to measure progress towards the overall vision for wastewater in Christchurch.

The following pages provide an overview of the LoS for each community outcome. These are the community facing LoS and will be published in our Statement of Service Provision. Council also has a number of management LoS that are internal measures used to assess service delivery.

Safe and Healthy Communities

LoS: Public health is protected from Council wastewater services

Number of dry weather overflows from wastewater systems

LoS: Council operates wastewater services in a responsive manner

Median time (in hours) from notification to attendance of overflows resulting from network faults

Median time (in hours) from notification to resolution of overflows resulting from network faults

Modern and Robust City Infrastructure and Facilities Network

LoS: Council operates wastewater services in a reliable manner

The proportion of residents satisfied with the reliability and responsiveness of wastewater services

The total number of complaints received by Council per 1000 properties

Percentage of total wastewater gravity network pipework length at condition grade 5 (very poor)

LoS: Council operates wastewater services in a responsive manner

Median time (in hours) from notification to arrival on-site for urgent faults on rural wastewater networks

Median time (in hours) from notification to arrival on-site for urgent faults on urban wastewater networks

Median time (in hours) from notification to arrival on-site for non-urgent faults on rural wastewater networks

Median time (in hours) from notification to arrival on-site for non-urgent faults on urban wastewater networks

Healthy Water Bodies

LoS: Council has high wastewater discharge quality

Number of abatement notices, infringement notices, enforcement orders and convictions Regarding Council resource consents.

Sustainable Use of Resources and Minimising Waste

LoS: Council wastewater networks and operations are sustainable

Community outcome: Safe and Healthy Communities

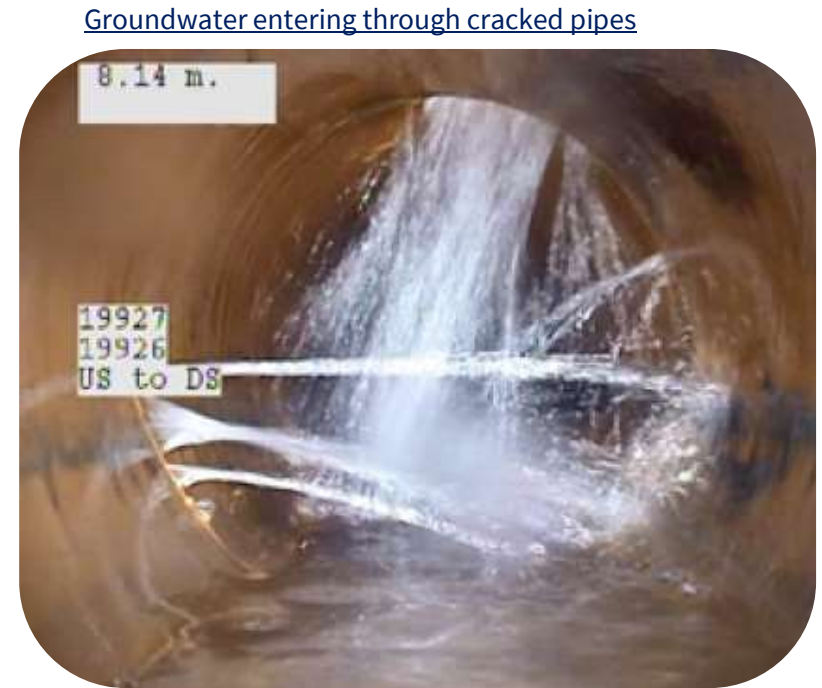
Level of service: Council operates wastewater services in a responsive manner

A key level of service (LoS) for the wastewater activity is that Council responds to issues and customer complaints regarding wastewater overflows in a timely manner to achieve the outcome of safe and healthy communities.

The image opposite shows groundwater entering the wastewater network through cracked pipes. This extra water can cause the capacity of the network to be overwhelmed in heavy rain.

The public can also help to avoid wastewater overflows by making sure they only connect wastewater plumbing to a gully trap.

It is also recommended that people do not have contact with ocean and waterways for two days following a heavy rainfall event, to protect them from wastewater overflows and other stormwater contaminants.



Outputs

LoS Performance Measures	Current Performance	Benchmark	Performance Targets			
			Year 1 2021/22	Year 2 2022/23	Year 3 2023/24	Year 10 2030/31
11.0.1.5 – Median time (in hours) from notification to attendance of overflows resulting from network faults	2019/20 = 0.55 hours	2018/19 = 0.55 hours (Water NZ National Performance Review median results)	≤ 1 hour			
11.0.1.6 – Median time (in hours) from notification to resolution of overflows resulting from network faults	2019/20 = 7.75 hours	2018/19 = 2.8 hours (Water NZ National Performance Review median results)	≤ 24 hours			

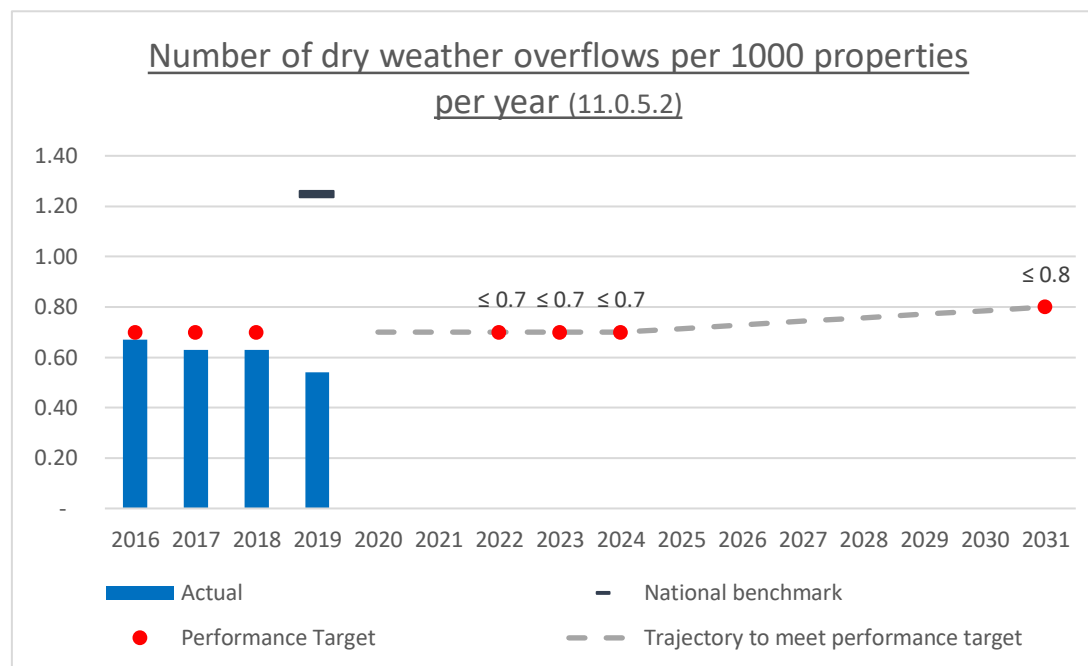
Community outcome: Safe and Healthy Communities

Level of service: Public health is protected from Council wastewater services

A key level of service for the wastewater activity is that it protects public health to achieve the outcome of safe and healthy communities. A dry weather overflow occurs when there is a blockage in the system, causing wastewater to enter streams, rivers, the sea, roads, or private property.

Wastewater contains human waste, food scraps and debris, so dry weather overflows can have an impact on river quality and cause a risk to public health. Dry weather overflows typically occur in small pipes, and are more frequent than wet weather overflows, however typically these have a smaller impact.

The graph opposite shows the number of dry weather overflows that have occurred per 1,000 properties connected to the network since the 2016 financial year, illustrating a steady decrease in dry weather overflows over the period. If this trend continues, Council will be below the target of less than 0.70 overflows per 1,000 properties for the financial years 2021/22 to 2023/24.



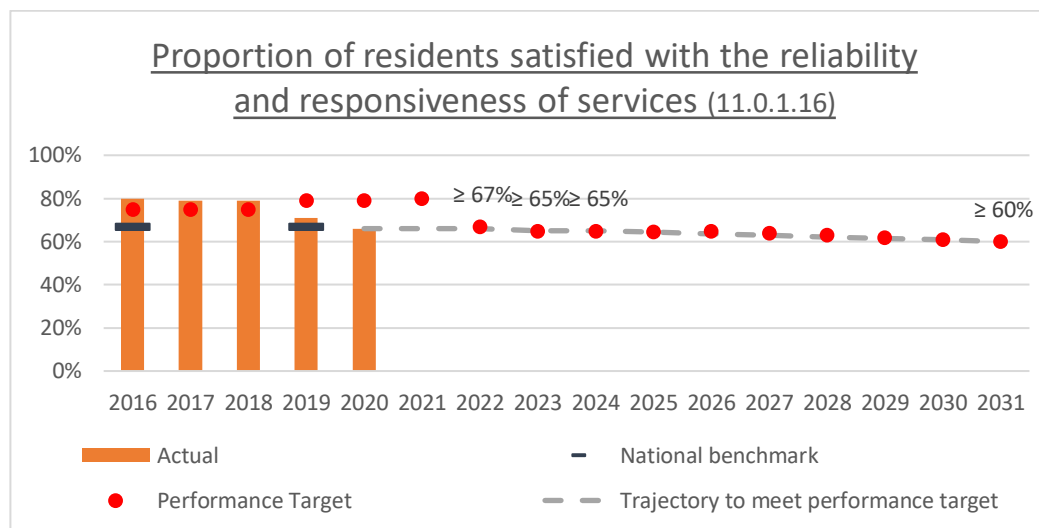
Outputs

Performance Measures	Current Performance	Benchmark	Performance Targets			
			Year 1 2021/22	Year 2 2022/23	Year 3 2023/24	Year 10 2030/31
11.0.5.2 – Number of dry weather overflows from wastewater systems per 1,000 connected properties per year	2019/20 = 0.6	2018/19 = 0.99 (Water NZ National Performance Review median results)	≤ 0.7	≤ 0.7	≤ 0.7	≤ 0.8

Level of service: Council operates wastewater services in a reliable

A key level of service for the wastewater activity is that it operates Council operates wastewater services in a reliable manner. This contributes to the community outcome of modern and robust city infrastructure and facilities network.

Wastewater reliability is measured through resident satisfaction and the number of complaints received through the call centre. The graph opposite shows the proportion of residents satisfied with the reliability and responsiveness of services, demonstrating a decline since the SCIRT rebuild.



Community outcome: Modern and Robust City Infrastructure and Facilities Network

Outputs

LoS Performance Measures	Current Performance	Benchmark	Performance Targets			
			Year 1 2021/22	Year 2 2022/23	Year 3 2023/24	Year 10 2030/31
11.0.1.16 – Proportion of residents satisfied with the reliability and responsiveness of wastewater services	2019/20 = 66%	Dunedin 67%	≥ 67%	≥ 65%	≥ 65%	≥ 60%
11.0.1.10 – Number of complaints received by Council relating to: - Wastewater odour - Wastewater faults - Wastewater blockages - Council’s response to any of these issues	2019/20 = 7.47	2018/19 = 10.81 (Water NZ National Performance Review median results for all complaint types)	≤ 10.7	≤ 10.7	≤ 10.7	≤ 10.7
11.0.1.18 – Percentage of total wastewater gravity network pipework length at condition grade 5 (very poor)	Changed Metric, past performance is not comparable.	No comparable benchmarks found.	≤ 13%	≤ 15%	≤ 17%	≤ 26%

Level of service: Council operates wastewater services in a responsive manner

A key level of service for the wastewater activity is that it operates wastewater services in a responsive manner. Responsiveness is measured through the time taken both to arrive on site following the notification of an issue, and by the time taken to resolve the issue. This contributes to the community outcome of modern and robust city infrastructure and facilities network.

The image opposite shows a contractor on site, resolving a damaged wastewater pipe following the Christchurch earthquake in February 2011.



Outputs

Performance Measures	Current Performance	Benchmark	Performance Targets			
			Year 1 2021/22	Year 2 2022/23	Year 3 2023/24	Year 10 2030/31
11.0.1.1 – Median time (in hours) from notification to arrival on-site for urgent faults on rural wastewater networks	2019/20 = 0.82 hours	2018/19 = 0.50 hours (Water NZ National Performance Review median results for all fault types)	≤ 2 hours			
11.0.1.2 – Median time (in hours) from notification to arrival on-site for urgent faults on urban wastewater networks	2019/20 = 0.47 hours	2018/19 = 0.50 hours (Water NZ National Performance Review median results for all fault types)	≤ 1 hours			
11.0.6.3 – Median time (in hours) from notification to arrival on-site for non-urgent faults on rural wastewater networks	2019/20 = 59.12 hours	2018/19 = 0.50 hours (Water NZ National Performance Review median results for all fault types)	≤ 120 hours			
11.0.6.2 – Median time (in hours) from notification to arrival on-site for non-urgent faults on urban wastewater networks	2019/20 = 37.95 hours	2018/19 = 0.50 hours (Water NZ National Performance Review median results for all fault types)	≤ 120 hours			

Community outcome: Healthy Waterways

Level of service: Council has high wastewater discharge quality

A key level of service for the wastewater activity is that Council have a high wastewater discharge quality. Wastewater discharge quality is an important aspect of maintaining healthy waterways and protecting the natural environment.

The image opposite shows the wastewater treatment process from a residential house through to the sea via an outfall. Samples of this treated wastewater discharged via the outfall are taken and analysed for a range of contaminants. These results are provided to Environment Canterbury to comply with resource consent monitoring requirements on a quarterly basis.

Wastewater Treatment Process



Outputs

Performance Measures	Current Performance	Benchmark	Performance Targets			
			Year 1 2021/22	Year 2 2022/23	Year 3 2023/24	Year 10 2030/31
11.1.2.0 – Number of abatement notices, infringement notices, enforcement orders and convictions regarding Council resource consents related to discharges from wastewater systems per year	2019/20 = 0	Average from Water NZ National Performance Review. 2015/16: 0.19			0	

LOS number	C/ M ¹	Performance Measures Levels of Service (LOS)	Historic Performance Trends	Benchmarks	Future Performance Targets				Method of Measurement	Community Outcome
					Year 1 2021/22	Year 2 2022/23	Year 3 2023/24	Year 10 2030/31		
Council operates wastewater services in a reliable manner										
11.0.1.16	C	Proportion of residents satisfied with the reliability and responsiveness of wastewater services	2019/20: 66% 2018/19: 71%	Dunedin 67%	≥ 67%	≥ 65%	≥ 65%	≥ 60%	Resident satisfaction surveys	Modern and robust city infrastructure and community facilities
11.0.1.15	M	Annual number of properties affected by wastewater blowbacks due to maintenance work carried out by the Council or its contractors	2019/20: 31 2018/19: 21 2017/18: 41 2016/17: 23 2015/16: 23	Blowbacks can occur in Christchurch wastewater network due to flat grades and remaining earthquake damage. No performance data found for blowbacks at other NZ Councils or wastewater service suppliers.	< 35	< 35	< 35	< 35	Count of total number of blowbacks due to maintenance work carried out by the Council or its contractors reported to the Council call centre in a financial year. Reported in monthly contract reports from the Contractor.	Modern and robust city infrastructure and community facilities
11.0.1.10	C	Total number of complaints per 1000 properties received by Council per year about: a) Wastewater odour b) Wastewater system faults c) Wastewater system blockages d) Council's response to any of these issues	2019/20: 7.47 2018/19: 5.19 2017/18: 3.25 2016/17: 6.25 2015/16: 7.24	Medians from Water NZ National Performance Review 2018/19: 10.81 2015/16: 6	≤ 10.7	≤ 10.7	≤ 10.7	≤ 10.7	Total number of complaints received through Council's call centre about odour, system faults, blockages or responses to complaints multiplied by 1000/number of connections. Department of Internal Affairs, Wastewater Non-Financial Performance Measure 4.	Modern and robust city infrastructure and community facilities

¹ C/M – Community or Management level of service (LOS)

Community LOS - Previously known as LTP LOS. These are LOS that are community facing and will be published in our Statement of Service Provision.

Management LOS - Previously known as Non-LTP LOS. These are LOS that are measured in the organisation to ensure service delivery.

LOS number	C/M ¹	Performance Measures Levels of Service (LOS)	Historic Performance Trends	Benchmarks	Future Performance Targets				Method of Measurement	Community Outcome
					Year 1 2021/22	Year 2 2022/23	Year 3 2023/24	Year 10 2030/31		
11.0.1.8	M	Number of wastewater odour complaints per 1,000 properties connected to the wastewater network per year	2019/20: 0.41 2018/19: 0.36 2017/18: 0.36 2016/17: 0.39 2015/16: 0.52	None found.	≤ 0.6	≤ 0.6	≤ 0.6	≤ 0.6	The number of complaints about Council's wastewater network received through the call centre, expressed per 1,000 properties connected to the Council's wastewater system Department of Internal Affairs, wastewater non-financial performance measure 4a	Modern and robust city infrastructure and community facilities
11.0.1.7	M	Number of wastewater system blockage complaints per 1,000 properties connected to the wastewater network per year	2019/20: 1.88 2018/19: 4.17 2017/18: 2.43 2016/17: 5.17 2015/16: 6.19	None found.	≤ 6	≤ 6	≤ 6	≤ 7	The number of complaints about Council's wastewater system blockages received through the call centre, expressed per 1,000 properties connected to the Council's wastewater system Department of Internal Affairs, wastewater non-financial performance measure 4c	Modern and robust city infrastructure and community facilities
11.0.1.9	M	Number of wastewater system fault complaints per 1,000 properties connected to the wastewater network per year	2019/20: 3.30 2018/19: 0.56 2017/18: 0.46 2016/17: 0.69 2015/16: 0.53	None found.	≤ 4.0	≤ 4.0	≤ 4.0	≤ 4.0	The number of complaints about Council's wastewater network received through the call centre, expressed per 1,000 properties connected to the Council's wastewater system. Department of Internal Affairs, wastewater non-financial performance measure 4b	Modern and robust city infrastructure and community facilities
11.0.1.18	C	Percentage of total wastewater gravity network pipework length at condition grade 5 (very poor)	2019/20: 9.3% 2018/19: 9.4% Change in measurement	No comparable benchmarks found.	≤ 13%	≤ 15%	≤ 17%	≤ 26%	Lengths of pipe at condition grade 5 divided by total wastewater pipe length expressed as a percentage. Condition deterioration since inspection to be	Modern and robust city infrastructure and community facilities

LOS number	C/M ¹	Performance Measures Levels of Service (LOS)	Historic Performance Trends	Benchmarks	Future Performance Targets				Method of Measurement	Community Outcome
					Year 1 2021/22	Year 2 2022/23	Year 3 2023/24	Year 10 2030/31		
			method for 2021/22. Not measured prior to 2018.						included when assigning a condition grade to a pipe. Reported from Council asset management systems.	
11.0.1.19	M	Percentage of wastewater mains with high or very high consequences of failure inspected as scheduled in their lifespan.	Changed Metric. Past performance not comparable to new measurement methodology.	None found.	≥ 70%	≥ 75%	≥ 80%	≥ 80%	Considering only pipes scheduled for inspection in the CCTV inspection programme: Length of pipe inspected divided by total length of pipe. Reported from Council Asset Management Systems.	Modern and robust city infrastructure and facilities network
Council has high wastewater discharge quality										
11.1.2.0	C	Number of abatement notices, infringement notices, enforcement orders and convictions regarding Council resource consents related to discharges from wastewater systems per year	2019/20: 0 2019/20: 0 2018/19: 0 2017/18: 0 2016/17: 0 2015/16: 0	Average from Water NZ National Performance Review. 2015/16: 0.19	0	0	0	0	Resource consent compliance reports to ECan. Department of Internal Affairs, wastewater non-financial performance measure 2.	Healthy water bodies
11.1.2.1	M	Number of abatement notices regarding Council resource consents related to discharges from wastewater systems per year	2019/20: 0 2018/19: 0 2017/18: 0 2016/17: 0 2015/16: 0	Average from Water NZ National Performance Review. 2015/16: 0.15	0	0	0	0	Resource consent compliance reports to ECan. Department of Internal Affairs, wastewater non-financial performance measure 2a	Healthy water bodies

LOS number	C/M ¹	Performance Measures Levels of Service (LOS)	Historic Performance Trends	Benchmarks	Future Performance Targets				Method of Measurement	Community Outcome
					Year 1 2021/22	Year 2 2022/23	Year 3 2023/24	Year 10 2030/31		
11.1.2.2	M	Number of convictions regarding Council resource consents related to discharges from the wastewater systems per year	2019/20: 0 2018/19: 0 2017/18: 0 2016/17: 0 2015/16: 0	Average from Water NZ National Performance Review. 2015/16: 0	0	0	0	0	Resource consent compliance reports to ECan. Department of Internal Affairs, wastewater non-financial performance measure 2d	Healthy water bodies
11.1.2.3	M	Number of enforcement orders regarding Council resource consents related to discharges from wastewater systems per year	2019/20: 0 2018/19: 0 2017/18: 0 2016/17: 0 2015/16: 0	Average from Water NZ National Performance Review. 2015/16: 0	0	0	0	0	Resource consent compliance reports to ECan. Department of Internal Affairs, wastewater non-financial performance measure 2c	Healthy water bodies
11.1.2.4	M	Number of infringement notices regarding Council resource consents related to discharges from wastewater systems per year	2019/20: 0 2018/19: 0 2017/18: 0 2016/17: 0 2015/16: 0	Average from Water NZ National Performance Review. 2015/16: 0.04	0	0	0	0	Resource consent compliance reports to ECan. Department of Internal Affairs, wastewater non-financial performance measure 2b	Healthy water bodies
11.1.4	M	Proportion of externally reported sampling and testing completed by an IANZ accredited laboratory:	2019/20: 100% 2018/19: 100% 2017/18: 100% 2016/17: 100% 2015/16: 100%	Watercare Laboratory is IANZ accredited. Wellington Water uses IANZ accredited laboratories.	100%	100%	100%	100%	Number of samples tested by an IANZ accredited lab divided by total number of samples tested expressed as a percentage.	Modern and robust city infrastructure and community facilities
Council operates wastewater services in a responsive manner										
11.0.1.1	C	Median time (in hours) from notification to arrival on-site for urgent faults on rural wastewater networks	2019/20: 0.82 2018/19: 0.72	Median from Water NZ National Performance Review (combined urban and rural attendance times)	≤ 2	≤ 2	≤ 2	≤ 2	The median attendance time measured from the time that the Council receives notification of the	Modern and robust city infrastructure and

LOS number	C/M ¹	Performance Measures Levels of Service (LOS)	Historic Performance Trends	Benchmarks	Future Performance Targets				Method of Measurement	Community Outcome
					Year 1 2021/22	Year 2 2022/23	Year 3 2023/24	Year 10 2030/31		
				2018/19: 0.50 2015/16: 0.92					fault to the time that service personnel confirm resolution of the fault. Reported in monthly contract reports from the Contractor. Department of Internal Affairs, wastewater non-financial performance measure 3a	community facilities
11.0.1.2	C	Median time (in hours) from notification to arrival on-site for urgent faults on urban wastewater networks	2019/20: 0.47 2018/19: 0.48	Median Results from Water NZ National Performance Review (combined urban and rural response times) 2018/19: 0.50 2015/16: 0.92	≤ 1	≤ 1	≤ 1	≤ 1	The median attendance time measured from the time that the Council receives notification of the fault to the time that service personnel confirm resolution of the fault. Reported in monthly contract reports from the Contractor. Department of Internal Affairs, wastewater non-financial performance measure 3a	Modern and robust city infrastructure and facilities network
11.0.6.3	C	Median time (in hours) from notification to arrival on-site for non-urgent faults on rural wastewater networks	2019/20: 59.12 2018/19: 2.28 Not measured prior to 2018.	Median from Water NZ National Performance Review (combined urban and rural attendance times) 2018/19: 0.50 2015/16: 0.92	≤ 120	≤ 120	≤ 120	≤ 120	The median attendance time measured from the time that the Council receives notification of the fault to the time that service personnel confirm resolution of the fault. Reported in monthly contract reports from the Contractor. Department of Internal Affairs, wastewater non-financial performance measure 3a	Modern and robust city infrastructure and community facilities
11.0.6.2	C	Median time (in hours) from notification to arrival	2019/20: 37.95	Median Results from Water NZ National Performance	≤ 120	≤ 120	≤ 120	≤ 120	The median attendance time measured from the time that the	Modern and robust city

LOS number	C/M ¹	Performance Measures Levels of Service (LOS)	Historic Performance Trends	Benchmarks	Future Performance Targets				Method of Measurement	Community Outcome
					Year 1 2021/22	Year 2 2022/23	Year 3 2023/24	Year 10 2030/31		
		on-site for non-urgent faults on urban wastewater networks	2018/19: 2.28 Not measured prior to 2018	Review (combined urban and rural response times) 2018/19: 0.50 2015/16: 0.92					Council receives notification of the fault to the time that service personnel confirm resolution of the fault. Reported in monthly contract reports from the Contractor. Department of Internal Affairs, wastewater non-financial performance measure 3a	infrastructure and community facilities
11.0.1.5	C	Median time (in hours) from notification to attendance of overflows resulting from network faults	2019/20: 0.52 2018/19: 0.55	Median Results from Water NZ National Performance Review. 2018/19: 0.55 2015/16: 0.92	≤ 1	≤ 1	≤ 1	≤ 1	The median response time measured from the time that the Council receives notification of the overflow to the time that service personnel reach the site. Reported in monthly contract reports from the Contractor. Department of Internal Affairs, wastewater non-financial performance measure 3a	Safe and healthy communities
11.0.1.6	C	Median time (in hours) from notification to resolution of overflows resulting from network faults	2019/20: 7.75 2018/19: 2.41	Water NZ National Performance Review 2018/19: 2.8 2015/16: 3.0	≤ 24	≤ 24	≤ 24	≤ 24	The median resolution time measured from the time that the Council receives notification of the overflow to the time that service personnel confirm resolution of the overflow. Reported in monthly contract reports from the Contractor. Department of Internal Affairs, wastewater non-financial performance measure 3b	Safe and healthy communities

LOS number	C/M ¹	Performance Measures Levels of Service (LOS)	Historic Performance Trends	Benchmarks	Future Performance Targets				Method of Measurement	Community Outcome
					Year 1 2021/22	Year 2 2022/23	Year 3 2023/24	Year 10 2030/31		
11.0.6.4	M	Number of complaints regarding Council's response to issues with the Council wastewater system per 1,000 properties connected to the wastewater network per year	2019/20: 1.88 2018/19: 0.10 Not measured prior to 2018.	None found.	≤ 0.1	≤ 0.1	≤ 0.1	≤ 0.1	The number of complaints about Council's wastewater system blockages received through the call centre, expressed per 1,000 properties connected to the Council's wastewater system Department of Internal Affairs, wastewater non-financial performance measure 4d	Safe and healthy communities
Public health is protected from Council wastewater services										
11.0.5.2	C	Number of dry weather overflows from wastewater systems per 1,000 connected properties per year	2019/20: 0.60 2018/19: 0.54 2017/18: 0.63 2016/17: 0.63 2015/16: 0.67	Median from Water NZ National Performance Review. 2018/19: 0.99 2015/16: 1.56	≤ 0.7	≤ 0.7	≤ 0.7	≤ 0.8	Number of dry weather overflows per 1,000 properties connected to the wastewater network. Reported in resource consent compliance reports to ECan. Department of Internal Affairs, wastewater non- financial performance measure 1	Safe and healthy communities
Council wastewater networks and operations are sustainable										
11.1.5.1	M	Power consumption - kWh of electricity per cubic metre wastewater treated at the Christchurch wastewater treatment plant	2019/20: 0.23 2018/19: 0.22 2017/18: 0.20 2016/17: 0.20 2015/16: 0.20	None found	≤ 0.275	≤ 0.275	≤ 0.275	≤ 0.275	Total power consumption for the year to date divided by the volume of wastewater treated for the year to date.	Sustainable use of resources and minimising waste

LOS number	C/M ¹	Performance Measures Levels of Service (LOS)	Historic Performance Trends	Benchmarks	Future Performance Targets				Method of Measurement	Community Outcome
					Year 1 2021/22	Year 2 2022/23	Year 3 2023/24	Year 10 2030/31		
11.1.5.2	M	Power consumption - kWh of electricity per kilogram of chemical oxygen demand (COD) removed at the Christchurch wastewater treatment plant	2019/20: 0.35 2018/19: 0.36 2017/18: 0.33 2016/17: 0.29 2015/16: 0.31	None found	≤ 0.38	≤ 0.38	≤ 0.38	≤ 0.38	Total power consumption for the year to date divided by the mass of chemical oxygen demand removed in the year to date.	Sustainable use of resources and minimising waste
11.1.3.1	M	Proportion of biosolids diverted from landfill (beneficially reused)	2019/20: 100% 2018/19: 96.1% 2017/18: 97.9% 2016/17: 95.6% 2015/16: 95.7%	None found.	≥ 95%	≥ 95%	≥ 95%	≥ 95%	Mass of biosolids sent for beneficial reuse divided by total mass of biosolids produced expressed as a percentage.	Sustainable use of resources and minimising waste
11.1.6	M	Proportion of electricity used at the Christchurch wastewater treatment plant that is self-generated from treatment by-products	2019/20: 60.7% 2018/19: 74% 2017/18: 67% 2016/17: 73% 2015/16: 88.9%	Watercare: 26.7%	≥ 65%	≥ 65%	≥ 65%	≥ 65%	kWh of electricity used that is self-generated divided by the total power use in kWh expressed as a percentage.	Sustainable use of resources and minimising waste
11.1.10	M	10 year rolling historic ratio of renewals to depreciation	New Metric 2019/20: 31.0% 2018/19: 24.2%	100%: Institute of Public Works Engineering Australasia (IPWEA) Asset management financial indicator	≥ 35%	≥ 39%	≥ 45%	≥ 50%	Historic 10yr average renewals expenditure / Historic 10yr average depreciation	Great place for people, business and investment
11.1.11	M	Increase Wastewater Asset Management Maturity towards agreed, appropriate level.	New Metric 2020: 81 2018: 76 2016: 72	NZ Treasury Investor Confidence Rating (ICR) Asset Management Maturity Assessment (AMMA) Tool	≥82	≥82	≥84	≥92	Conduct assessment on alternate years Asset Management Maturity assessment (AMMA) to be conducted every two years by an external assessor until appropriate level of maturity target is achieved.	Modern and robust city infrastructure and facilities network

6. Does this Activity Plan need to change as a result of a Service Delivery Review (S17A)?

A Section 17A Service Delivery Review (S17A) is a legal requirement under the Local Government Act and determines whether the existing means for delivering a service remains the most efficient, effective and appropriate approach. The legislation requires that a S17A Service Delivery Review should periodically assess:

“The cost-effectiveness of current arrangements for meeting the needs of communities within its district or region for good quality local infrastructure, local public services, and performance of regulatory functions”.

A review of water supply activities was initiated in July 2019 for two key reasons:

- the expiry of the existing 3 waters maintenance contracts and a desire to go out to market for these services
- to enable Council to be prepared for the outcomes of the Department of Internal Affairs’ 3 Waters review

The section 17A review was completed in June 2020 and presented to Council in August 2020. The review confirmed that there were underlying challenges with the status quo. Central Government’s water reform programme gained significant momentum in mid-2020 and Council agreed to sign a non-binding Memorandum of Understanding with the Crown at the same extra ordinary Council meeting in August 2020 regarding water reform. Due to the increasing pace of water reform, the status quo was the recommended way forward for the section 17A review. The reform is going to lead to significant changes to water service delivery across the country and adding in further structural change during the reform process was not seen to add value to Christchurch.

The Government has announced a new national water regulator and is reviewing how to improve the supply arrangements of drinking water, wastewater and stormwater, including financing provisions and decision-making capability. Any changes implemented at a national level will have an impact on Council’s service delivery.

Given the uncertainty in terms of the outcomes and timing water reform, it is difficult to predict the impacts on the water supply activity service delivery structure. The AMP is prepared on a “business as usual” assumption. Potential outcomes include:

- Regional or larger asset owning 2 waters entity
- Regional, top of the South Island or full South Island entity that includes storm water and waterways

7. What levels of service are we proposing to change from the LTP 2018-28 and why?

A number of level of service performance measures have been modified or added from the previous LTP as summarised below.

LOS number	C/N	Performance Measures Levels of Service (LOS)	Historic Performance Trends	Benchmarks	Future Performance Targets				Method of Measurement	Rationale for Addition	Options for consultation and engagement
					Year 1 2021/22	Year 2 2022/23	Year 3 2023/24	Year 10 2030/31			
Additions											
11.0.1.10	C	Total number of complaints received by Council about: a) Wastewater odour b) Wastewater system faults c) Wastewater system blockages d) Council's response to any of these issues.	2019/20: 7.47 2018/19: 5.19 2017/18: 3.25 2016/17: 6.25 2015/16: 7.24	Medians from WaterNZ National Performance Review 2018/19: 10.81 2015/16: 6	≤ 10.7	≤ 10.7	≤ 10.7	≤ 10.7	Total number of complaints received through Council's call centre about odour, system faults, blockages or responses to complaints multiplied by 1000/number of connections. Department of Internal Affairs, Wastewater Non-Financial Performance Measure 4.	This is a combination of 4 individual performance measures. We propose to change the four existing performance measures from community to management Levels of Service for internal reporting but only report the overall complaint number externally. Combining the four minimises the number of community performance measures and aligns us with other councils as well as aligning to national benchmarking.	None required
11.1.10	M	10yr rolling historic ratio of renewals to depreciation.	2019/20: 31.0% 2018/19: 24.2%	100%: Institute of Public Works Engineering Australasia (IPWEA) Asset management financial indicator	≥ 35%	≥ 39%	≥ 45%	≥ 50%	Historic 10yr average renewals expenditure / Historic 10yr average depreciation.	This performance measure provides transparency to stakeholders as regarding the level of CAPEX funding against requirements. New metric to show adequacy of renewals funding. This is a standard IPWEA benchmarking measure.	Management Level of service - None required

LOS number	C/N	Performance Measures Levels of Service (LOS)	Historic Performance Trends	Benchmarks	Future Performance Targets				Method of Measurement	Rationale for Addition	Options for consultation and engagement
					Year 1 2021/22	Year 2 2022/23	Year 3 2023/24	Year 10 2030/31			
11.1.11	M	Increase Wastewater Asset Management Maturity towards agreed, appropriate level.	2020: 81 2018: 76 2016: 72	NZ Treasury Investor Confidence Rating (ICR) Asset Management Maturity Assessment (AMMA) Tool	≥82	≥82	≥84	≥92	Asset Management Maturity assessment (AMMA) to be conducted every two years by an external assessor until appropriate level of maturity target is achieved.	This performance measure provides assurance to stakeholders that Council is working to improve and/or maintain best practice in asset management processes.	Management Level of service - None required
11.1.2.0	C	Number of abatement notices, infringement notices, enforcement orders and convictions regarding Council resource consents related to discharges from wastewater systems per year	2019/20: 0 2019/20: 0 2018/19: 0 2017/18: 0 2016/17: 0 2015/16: 0	Average from Water NZ National Performance Review. 2015/16: 0.19	0	0	0	0	Resource consent compliance reports to ECan. Department of Internal Affairs, wastewater non-financial performance measure 2.	Reclassification to meet Audit and Governance expectations. Combining 4 existing DIA measures into 1 single measure	None required

LOS number	Old Wording	New Wording	Historic Performance Trends	Old Targets	New Targets	Rationale for Changes	Options for consultation and engagement
Modifications							
11.0.1.7	Number of wastewater system blockage complaints per 1,000 properties connected to the wastewater network per year	No change.	2019/20: 1.88 2018/19: 4.17 2017/18: 2.43 2016/17: 5.17 2015/16: 6.19	Year 1: ≤ 10 Year 2: ≤ 10 Year 3: ≤ 10 Year 10: ≤ 8	Year 1: ≤ 6 Year 2: ≤ 6 Year 3: ≤ 6 Year 10: ≤ 7	Past performance has been significantly below the target. Suggest tightening the target with a slight increase in year 10 to allow for the deferred renewals predicted to occur. We propose changing this from a community to a management level of service. External reporting will replace this and three other levels of service with a single level of service for total complaint numbers. (See 11.0.1.10) This change would align Council with other councils and national benchmarking.	Target moved in line with historic performance levels. Consultation not required.
11.0.1.8	Number of wastewater odour complaints per 1,000 properties connected to the wastewater network per year	No change.	2019/20: 0.41 2018/19: 0.36 2017/18: 0.36 2016/17: 0.39 2015/16: 0.52	Year 1: ≤ 0.6 Year 2: ≤ 0.6 Year 3: ≤ 0.6 Year 10: ≤ 0.6	No change.	We propose changing this from a community to a management level of service. External reporting will replace this and three other levels of service with a single level of service for total complaint numbers. (See 11.0.1.10) This change would align Council with other councils and national benchmarking.	None required
11.0.1.9	Number of wastewater system fault complaints per 1,000 properties connected to the wastewater network per year	No change.	2019/20: 3.30 2018/19: 0.56 2017/18: 0.46 2016/17: 0.69 2015/16: 0.53	Year 1: ≤ 0.6 Year 2: ≤ 0.6 Year 3: ≤ 0.6 Year 10: ≤ 0.6	Year 1: ≤ 4.0 Year 2: ≤ 4.0 Year 3: ≤ 4.0 Year 10: ≤ 4.0	We propose changing this from a community to a management level of service. External reporting will replace this and three other levels of service with a single level of service for total complaint numbers. (See 11.0.1.10) This change would align Council with other councils and national benchmarking. Targets increased in line with the past performance and anticipated increases in faults.	None required
11.0.6.4	Number of complaints regarding Council's response to issues with the	No change.	2019/20: 1.88 2018/19: 0.10	Year 1: ≤ 0.1 Year 2: ≤ 0.1 Year 3: ≤ 0.1	No change.	We propose changing this from a community to a management level of service. External reporting will replace this and three other levels	None required

LOS number	Old Wording	New Wording	Historic Performance Trends	Old Targets	New Targets	Rationale for Changes	Options for consultation and engagement
	Council wastewater system per 1,000 properties connected to the wastewater network per year			Year 10: ≤ 0.1		of service with a single level of service for total complaint numbers. (See 11.0.1.10) This change would align Council with other councils and national benchmarking.	
11.0.1.15	Annual number of properties affected by wastewater blowbacks due to maintenance work carried out by the Council or its contractors	No change.	2019/20: 31 2018/19: 21 2017/18: 41 2016/17: 23 2015/16: 23	Year 1: < 24 Year 2: < 23 Year 3: < 21 Year 10: < 12	Year 1: ≤ 35 Year 2: ≤ 35 Year 3: ≤ 35 Year 10: ≤ 35	Looking at the 2017/18 result of 41 and the 2019/20 result of 31 the targets may be overly tight. Targets in the 2018 LTP were ≤ 35 and we suggest returning to that target, especially as the CAPEX cap is likely to mean renewals remediating blowback causes are limited.	Management Level of service - None required
11.0.1.16	Proportion of residents satisfied with the reliability and responsiveness of wastewater services	No Change.	2019/20: 66% 2018/19: 71%	Year 1: ≥ 79% Year 2: ≥ 79% Year 3: ≥ 80% Year 10: ≥ 85%	Year 1: ≥ 67% Year 2: ≥ 65% Year 3: ≥ 65% Year 10: ≥ 60%	Based on past performance and the fact that the network faults and overflows are anticipated to increase as network condition deteriorates, targets are reduced to an achievable level.	Target moved in line with historic performance levels. Consultation not required.
11.0.1.18	Percentage of total wastewater gravity network pipework length at condition grade 5 (very poor)	No Change.	2019/20: 9.3% 2018/19: 9.4% Change in measurement method for 2021/22. Not measured prior to 2018.	Year 1: ≤ 13% Year 2: ≤ 13% Year 3: ≤ 13% Year 10: ≤ 13%	Year 1: ≤ 13% Year 2: ≤ 15% Year 3: ≤ 17% Year 10: ≤ 26%	Targets in and benchmarks from the previous LTP were based on a modified version of the NZPIM condition grading methodology. Changing to the AAIF condition assessment methodology means the targets should also change to reflect the new methodology. The current 9.4% condition 5 pipes is equivalent to 4.5% under the AAIF methodology. Many inspections informing the condition grades are approaching 10 or more years old and may not represent the current state of the pipe. New targets take estimated deterioration occurring since inspection into account with	None required

LOS number	Old Wording	New Wording	Historic Performance Trends	Old Targets	New Targets	Rationale for Changes	Options for consultation and engagement
						the method of measurement changed to include this deterioration.	
11.0.1.19	Percentage of wastewater gravity pipework identified as condition grade 5 through physical inspection rather than theoretical modelling.	Percentage of wastewater mains with high or very high consequences of failure inspected as scheduled in their lifespan.	Changed Metric. Past performance not comparable to new measurement methodology.	Year 1: ≥ 95% Year 2: ≥ 95% Year 3: ≥ 95% Year 10: ≥ 95%	Year 1: ≥ 70% Year 2: ≥ 75% Year 3: ≥ 80% Year 10: ≥ 80%	With the AAIF processes, we now have a risk/consequence of failure rating for all mains. The CCTV schedule takes this into account with planned/proactive inspections only planned for high consequence of failure pipes with the low consequence of failure pipes being run to failure and CCTV done reactively to identify factors causing issues. The proposed wording change reflects this. High consequence of failure pipes includes large diameter pipes that are difficult to inspect plus there is an existing backlog of inspections so the proposed targets start off low and increase to a value that allows for not all pipes able to be inspected.	Management Level of service - None required
11.0.5.2	Number of dry weather overflows from wastewater systems per 1,000 connected properties per year	No Change	2019/20: 0.60 2018/19: 0.54 2017/18: 0.63 2016/17: 0.63 2015/16: 0.67	Year 1: ≤ 0.7 Year 2: ≤ 0.7 Year 3: ≤ 0.7 Year 10: ≤ 0.6	Year 1: ≤ 0.7 Year 2: ≤ 0.7 Year 3: ≤ 0.7 Year 10: ≤ 0.8	We propose increasing the year 10 value to allow for increased blockages resulting from deferred renewal works.	None required
11.1.5.1	Power consumption - kWh of electricity per cubic metre wastewater treated at the Christchurch WWTP	No Change	2019/20: 0.23 2018/19: 0.22 2017/18: 0.20 2016/17: 0.20 2015/16: 0.20	Year 1: ≤ 0.20 Year 2: ≤ 0.20 Year 3: ≤ 0.20 Year 10: ≤ 0.20	Year 1: ≤ 0.275 Year 2: ≤ 0.275 Year 3: ≤ 0.275 Year 10: ≤ 0.275	Reductions in commercial and industrial activities, water conservation efforts and renewals reducing inflow and infiltration are reducing flows to the Christchurch WWTP (CWTP). Over the same period, increasing treatment processes and buildings increase the CWTP electrical usage. CWTP has a high baseline electrical usage, which is now spread over less flow increasing the electricity consumption per cubic meter.	Management Level of service - None required

LOS number	Old Wording	New Wording	Historic Performance Trends	Old Targets	New Targets	Rationale for Changes	Options for consultation and engagement
						Based on recent performance, the above target of <0.275kWh/m ³ is proposed as it more accurately reflects the present conditions as well as ensures a continued focus on energy efficiency.	
11.1.5.2	Power consumption - kWh of electricity per kilogram of chemical oxygen demand (COD) removed at the Christchurch WWTP	No change	2019/20: 0.35 2018/19: 0.36 2017/18: 0.33 2016/17: 0.29 2015/16: 0.31	Year 1: ≤ 0.33 Year 2: ≤ 0.33 Year 3: ≤ 0.33 Year 10: ≤ 0.33	Year 1: ≤ 0.38 Year 2: ≤ 0.38 Year 3: ≤ 0.38 Year 10: ≤ 0.38	Reductions in commercial and industrial activities and increased pre-treatment of industrial discharges are reducing COD loads to the Christchurch WWTP (CWTP). Over the same period, increasing treatment processes and buildings increase the CWTP electrical usage. CWTP has a high baseline electrical usage, which is now spread over less COD increasing the electricity consumption per kg COD. Exasperating this are the algal blooms in the oxidation ponds that increase the COD in the discharge thus reducing the measured COD removal by the treatment plant. Based on recent performance, the above target of <0.38kWh/kg/COD is proposed as it more accurately reflects the present conditions and noted trends as well as ensures a continued focus on energy efficiency.	Management Level of service - None required
11.1.6	Proportion of electricity used at the Christchurch WWTP that is self-generated from treatment by-products	No Change	2019/20: 60.7% 2018/19: 74% 2017/18: 67% 2016/17: 73% 2015/16: 88.9%	Year 1: ≥ 97% Year 2: ≥ 97% Year 3: ≥ 97% Year 10: ≥ 97%	Year 1: ≥ 65% Year 2: ≥ 65% Year 3: ≥ 65% Year 10: ≥ 65%	Addition of the thermophilic sludge digestion process stage has reduced the quality of the biogas from 63% methane to only 58% methane. Co-generation engines (installed 1996 and 2007) are beyond their theoretical asset lives and only operable at ~60% and 70% of capacity. Engine breakdown has recently been an issue with engines inoperable for lengthy periods awaiting parts.	Management Level of service - None required

LOS number	Old Wording	New Wording	Historic Performance Trends	Old Targets	New Targets	Rationale for Changes	Options for consultation and engagement
						<p>The 2018 LTP included engine replacement and installation of gas storage. Preliminary planning for replacement identified undersized pipework preventing maximum utilisation of biogas. A “Master Biogas Plan” is underway to identify all works required to maximise biogas utilisation and plan the required works.</p> <p>Installation of a solar array is identified to assist in Council’s goal to become carbon neutral by 2030. A (very) draft proposal has been submitted by Council for Central Government’s Covid-19 recovery shovel ready projects. The outcome of this application will potentially significantly impact this KPI.</p> <p>To reflect the current difficulties (co-generation unreliability) and opportunities (large solar array), it is proposed that the above targets are set, but which also ensures a continued focus on energy efficiency.</p>	

8. How will the assets be managed to deliver the services?

Council staff undertake ongoing planning work to determine what is required by the community now and in the future, what the options are, how works should be prioritised and the best way to deliver them. An Infrastructure Strategy is also developed every three years to identify the significant infrastructure issues across all Council assets over the next thirty years. The significant infrastructure issues identified over the next thirty years are:



Managing assets through a global recession



Managing operational expenditure requirements



Managing and meeting the expectations of a growing and changing population



Adapting to and mitigating climate change



Protecting our environment through reducing greenhouse gas emissions



Managing the risks posed by a rapidly changing regulatory and commercial environment

One important shift from the 2018-48 Infrastructure Strategy is that earthquake recovery and regeneration is no longer a stand-alone significant issue. Earthquake recovery and regeneration continues to provide important context for infrastructure issues, investment planning and decision making. Although much of the rebuild is now complete, some of the issues the Council faces are in part a consequence of the earthquake's legacy.

How repair or renewal works are identified and prioritised?

Horizontal infrastructure refers to the network of pipes (typically below ground), and accounts for 85% of the value of Council's wastewater assets. Piped assets have a finite life. As pipes are buried underground, routine inspection and planned maintenance are costly and impracticable. Proactive inspections are carried out only on the pipes where failure would potentially have high or very high consequences on the network, community and environment. Reactive maintenance is carried out when issues are identified on the network, generally through service requests logged by the public. The process for repair or renewal of horizontal infrastructure is outlined below, and is explained in more detail in chapters 7 and 8 of the [Asset Management Plan](#).

Condition grades are calculated for each pipe, based on actual inspections, or estimated according to the pipe's age and material. This gives an indication of the failure risk of each pipe, taking into account the condition, degradation and consequences of failure.

A three year renewal period is assigned to each pipe based on the condition and risk of failure. Risk is mitigated by prioritising the renewal of pipes with the highest risk and consequences of failure.

Theoretical data and actual failure data are used to calculate a priority score for each pipe.

The draft programme is calculated by fitting the required renewals to the budget based on renewal year and priority score. This is then checked for conflict/alignment with wider infrastructure programmes such as water supply, stormwater and transport projects.

The list is finalised, and agreed remedial actions are programmed and delivered within the financial year.

Wastewater assets are classified as either horizontal or vertical infrastructure. As stated above, horizontal infrastructure refers to the network of pipes and fittings (typically below ground), whereas vertical infrastructure refers to the pump stations and treatment plants (typically above ground). The key issues related to the management of both horizontal and vertical wastewater infrastructure are summarised below. This section also includes an overview of the measures we are taking to respond to these issues.

HORIZONTAL INFRASTRUCTURE - Reticulation Network

Renewals: Approximately 29% of below ground assets were repaired or replaced as part of the earthquake rebuild, at a cost of \$1.35billion. There is still some earthquake damage to the network that requires additional investment and a large number of pipes that were installed in the original network construction or post-war growth periods are due for replacement.

Planned Expenditure: To bring the condition of the network up to standard, significant investment in renewals is required. Currently proposed investment to replace poor condition pipes while managing rates increases is predicted to deteriorate the network further from 13% worst condition by length to 25% by 2031 peaking at 27% in 2038 before beginning to improve.

Deferral of Renewals: Deferral of renewal projects will increase service interruptions and reduce the opportunities for cost savings. Proactive maintenance to clean pipes with operational issues will be required to prevent blockages and overflows. Groundwater and stormwater will continue to enter damaged pipes, resulting in reduced capacity, increased overflows, and there is a higher risk of catastrophic pipe failure. Risks will be minimised by prioritising renewal/replacement of pipes with the highest risk of failure.

New Infrastructure Growth: Council is responsible for completing the wastewater infrastructure between new developments and the treatment plants, which requires consultation and collaboration with developers. Growth areas in the west and northwest will create additional demand on infrastructure that may not have capacity, increasing the need for significant growth projects. Optimisation targets growth projects to coincide with renewal projects where possible.



VERTICAL INFRASTRUCTURE - Pump Stations and Treatment Plants

Renewals: 84 pumping stations were created, repaired or replaced as part of the earthquake rebuild, at a cost of \$308million. There is a significant backlog of renewals that remains. Renewals at pump stations and treatment plants are required to continue the collection, treatment and disposal of wastewater and fall into four main areas:

- Health and safety projects
- End of life renewals
- Obsolescence projects
- Regulatory requirements

Health and Safety Requirements: Due to increasing health and safety requirements Council need to replace or upgrade assets that no longer comply and mitigate any sites containing asbestos. Guards for rotating equipment are also undergoing assessment and it is expected that investment will be required to bring these up to standard.

Technical Obsolescence: Technical obsolescence is where a product is no longer produced or supported. This issue affects our electrical and control systems. Projects for obsolescence can be costly as significant upgrades are often required due to incompatibility between new and existing assets.

Historical Underinvestment: Underfunding has also occurred in vertical infrastructure assets. Significant renewal projects are required, meaning there is an increased risk of service interruptions.

Regulatory Requirements: Meeting regulatory requirements is driving renewal and upgrade of instrumentation, especially at treatment plants. Existing testing and monitoring equipment is possibly not sufficiently accurate to meet new, more stringent, monitoring requirements in treatment plant resource consents, driving the renewal and upgrade of existing assets.



9. What financial resources are needed?

WW Collection, Treatment & Disposal											
000's	Annual Plan 2020/21	LTP 2021/22	LTP 2022/23	LTP 2023/24	LTP 2024/25	LTP 2025/26	LTP 2026/27	LTP 2027/28	LTP 2028/29	LTP 2029/30	LTP 2030/31
<i>Activity Costs before Overheads by Service</i>											
Wastewater Collection	12,387	14,891	13,388	14,057	14,734	14,872	15,522	16,116	16,617	17,212	17,835
Treat & Dispose of Wastewater	9,114	8,825	8,923	9,125	9,371	9,610	9,860	10,112	10,377	10,657	10,937
Laboratory Services	2,054	1,912	1,913	1,897	1,930	1,976	2,028	2,078	2,123	2,175	2,227
	23,555	25,628	24,224	25,079	26,035	26,458	27,409	28,305	29,117	30,045	30,998
<i>Activity Costs by Cost type</i>											
Direct Operating Costs	4,133	3,983	4,088	4,199	4,318	4,445	4,575	4,714	4,867	5,025	5,182
Direct Maintenance Costs	8,915	9,936	9,606	10,160	10,749	10,771	11,281	11,756	12,136	12,596	13,083
Staff and Contract Personnel Costs	10,448	11,648	10,469	10,655	10,903	11,175	11,484	11,764	12,042	12,350	12,657
Other Activity Costs	60	61	63	64	66	67	69	70	72	74	76
	23,555	25,628	24,224	25,079	26,035	26,458	27,409	28,305	29,117	30,045	30,998
Activity Costs before Overheads	23,555	25,628	24,224	25,079	26,035	26,458	27,409	28,305	29,117	30,045	30,998
Overheads, Indirect and Other Costs	18,920	19,787	20,836	21,585	22,089	22,976	23,244	23,965	24,940	25,299	25,990
Depreciation	65,768	67,799	70,257	72,337	75,293	76,946	79,124	82,985	86,846	90,286	92,905
Debt Servicing and Interest	5,752	5,454	5,445	5,735	6,450	6,987	7,741	8,020	8,595	8,757	9,190
Total Activity Cost	113,995	118,668	120,762	124,735	129,867	133,367	137,518	143,276	149,498	154,385	159,083
Funded By:											
Fees and Charges	4,828	5,889	6,013	6,145	6,287	6,438	6,592	6,757	6,939	7,127	7,312
Grants and Subsidies	-	725	-	-	-	-	-	-	-	-	-
Cost Recoveries	676	690	705	720	737	755	773	792	813	835	857
Other Revenues	-	-	-	-	-	-	-	-	-	-	-
Total Operational Revenue	5,504	7,305	6,718	6,866	7,023	7,192	7,365	7,549	7,753	7,962	8,169
Net Cost of Service	108,492	111,364	114,044	117,870	122,844	126,175	130,154	135,727	141,745	146,423	150,914
Funding Percentages:											
Rates	95.2%	93.8%	94.4%	94.5%	94.6%	94.6%	94.6%	94.7%	94.8%	94.8%	94.9%
Fees and Charges	4.2%	5.0%	5.0%	4.9%	4.8%	4.8%	4.8%	4.7%	4.6%	4.6%	4.6%
Grants and Subsidies	0.0%	0.6%	0.0%	0.0%	0.0%	0.0%	0.0%	0.0%	0.0%	0.0%	0.0%
Cost Recoveries	0.6%	0.6%	0.6%	0.6%	0.6%	0.6%	0.6%	0.6%	0.5%	0.5%	0.5%
Capital Expenditure											
Replace Existing Assets	40,373	47,401	50,650	54,443	61,504	64,055	74,895	71,396	76,303	66,729	61,570
Improve the Level of Service	13,953	8,902	14,849	15,470	21,648	27,540	26,519	15,041	2,273	2,283	7,728
Meet Additional Demand	1,429	627	2,450	2,572	2,075	2,127	2,300	4,409	3,249	3,527	3,874
Total Activity Capital	55,755	56,930	67,950	72,485	85,227	93,722	103,713	90,846	81,825	72,539	73,172

Funding Consideration

Local Government Act 2002 Section 101 Funding Consideration. The following tables are based on the financials from the previous page.

Funding Policy

Funding Principles

User-Pays	Exacerbator-Pays	Inter-Generational Equity	Separate Funding?
High	Low	Low	High

The table above shows how Council has considered funding in relation to the Activity, using a simple high / medium / low scale:

- User-pays – the degree to which the Activity can be attributed to individuals or identifiable groups rather than the community as a whole;
- Exacerbator-pays – the degree to which the Activity is required as a result of the action (or inaction) of individuals or identifiable groups;
- Inter-generational equity – the degree to which benefits can be attributed to future periods; and
- Separate funding – the degree to which the costs and benefits justify separate funding for the Activity.

Where an Activity is paid for through a number of funding mechanisms, Council’s practice is to meet its operating costs in the first instance from fees & charges and grants & subsidies (subject to the considerations outlined above). If the Activity requires further operational funding, this remainder is funded through rates.

This capital programme will be funded in accordance with the following principles:

Investment type	Initial funding	Serviced and/or repaid by:
<ul style="list-style-type: none"> • Renewal / replacement • Service Improvement and other assets • Growth 	<ul style="list-style-type: none"> • Rates and debt • Debt • Debt and Development Contributions 	<ul style="list-style-type: none"> • Rates • Rates • Rates and Development Contributions

Operating Cost Funding Policy

This table below shows Council’s broad funding target for the Activity (i.e. how much is paid for by individuals / groups, and how much by the community as a whole), and the associated funding mechanism used (i.e. general rates, targeted rates, user charges, etc.). As the precise balance between individual / group and community funding may vary in practice (particularly for volumetric fees and charges), the funding target for each of the below tables is expressed in broad terms rather than specific percentages:

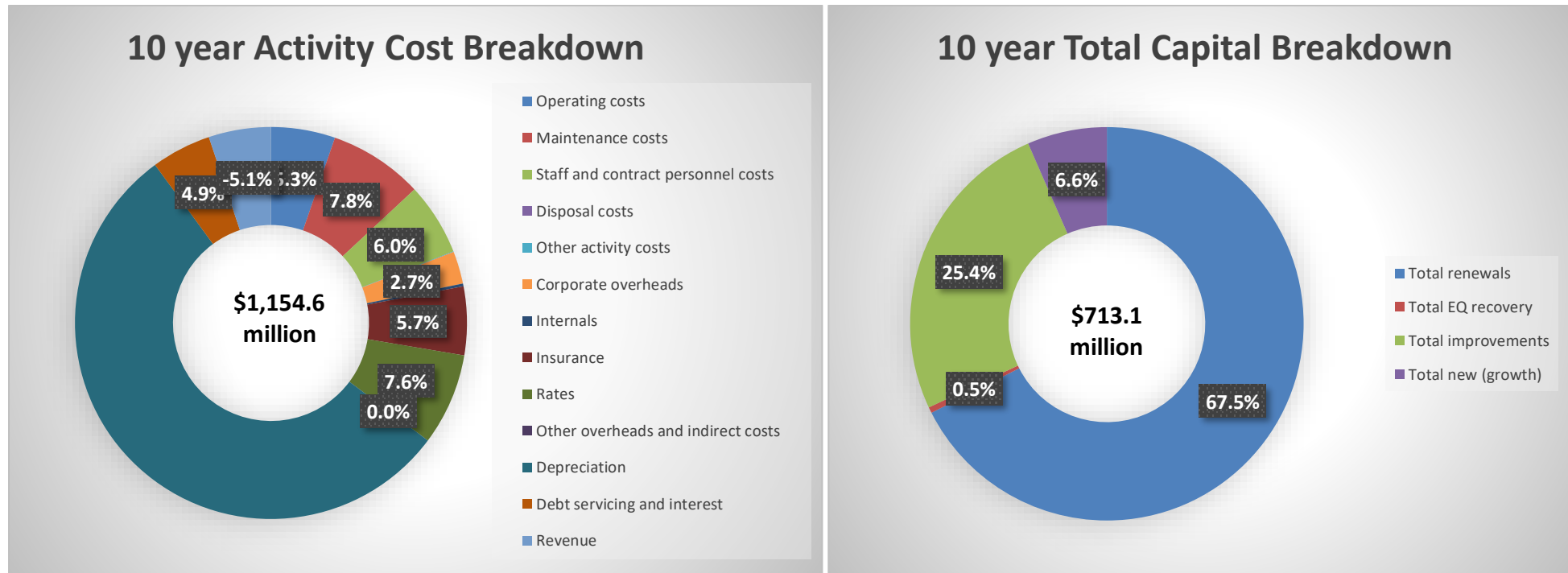
- Low = this source provides 0%-25% of the funding for this Activity;
- Medium = this source provides 25%-75% of the funding for this Activity; and
- High = this source provides 75%-100% of the funding for this Activity.

Funding Target		Funding mechanism	
Individual / Group	Community	Individual / Group	Community
High	Low	<ul style="list-style-type: none"> • Targeted Rate (High) • Fees & Charges (Low) 	• Grants & Other (Low)

Capital Cost Funding Policy for this Activity

Rates	Borrowing	DC s	Grants and Other
High	Low	Low	Low

The charts below illustrate the proposed spending over the next ten years. The chart on the left shows significant a breakdown of activity costs and the chart on the right provides a breakdown of capital funding. All budgets are un-inflated.






The projected total cost of providing the necessary core services covered by this activity, including operations, maintenance, renewal, upgrade and earthquake recovery over the 10 years of the Long Term Plan (LTP) from Financial Year 21/22 to Financial Year 2031/32 (FY22 – FY32) is **\$2,296million**. The historic expenditure for the 10 year period FY2011 to FY2020 was **\$1,858 million**.

The significant projected increase is primarily due addressing a backlog of deferred renewals and to stop further deterioration of the network.

The funding allocated to providing the necessary core services covered by this Activity plan over the 10 years of the LTP is **\$1,842million**. This is **80%** of the cost (as outlined above) to provide optimised asset management at the lowest lifecycle cost.

The allocated funding leaves an annual average shortfall of **\$454 million** over the 10 years of the LTP (all values exclude inflation)

A snapshot of key financial indicators is shown below, including the historic ten year average and how this compares with the next LTP period.

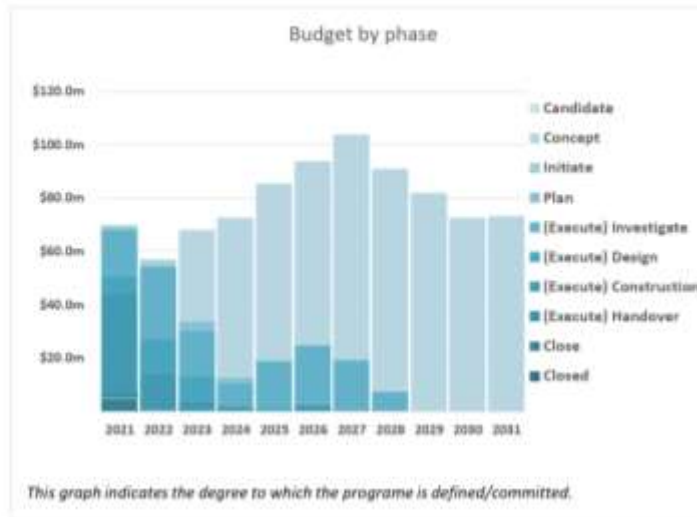
	Historic	Recommended	Proposed	Change	Explanation
Asset Renewal funding ratios	2011-20 29%	10yr 100% 5yr 100% 3yr 100%	10yr 48.2% 5yr 54.6% 3yr 54.6%		Shows what percentage of total recommended renewal cost will be funded.
Rate of annual asset renewal (FY22-24)		2.74%	0.67%		How much of the asset stock will be renewed / replaced each year.
Rate of annual asset creation (FY22-24)		0.67%	0.31%		This is an indicator of how much is been added to the asset stock each year.

Valuation Data

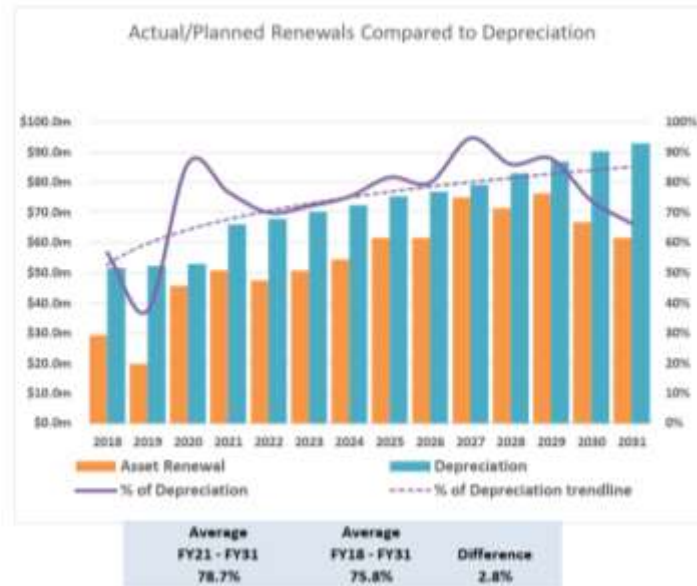
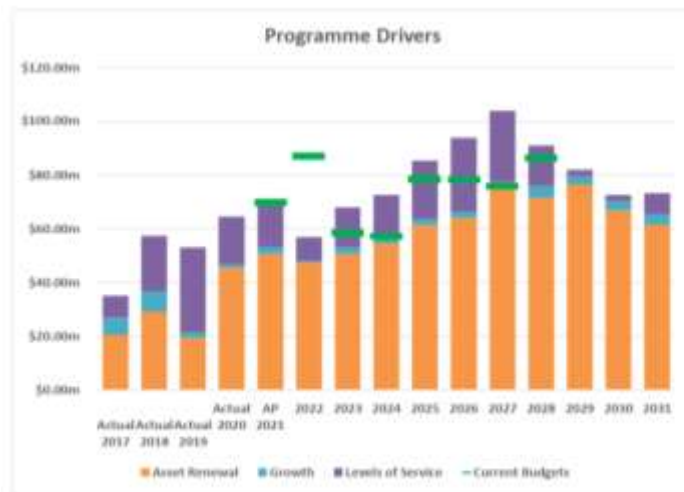
Annual Depreciation Expense (AD)			Replacement Cost (ORC)			Annual Rate of Asset Consumption	
2020	\$65.4 million	+ 27%	2020	\$5,104 million	+ 30%	2020	1.28%
2017	\$48.7 million	+ 11%	2017	\$3,594 million	+ 4%	2017	1.36%
2015	\$43.3 million	+ 9%	2015	\$3,440 million		2015	1.34%

10. How much capital expenditure will be spent, on what category of asset, and what are the key capital projects for this activity?

Activity Plan Capital Programme Dashboard



Values are inflation adjusted.



Average FY21 - FY31	Average FY18 - FY31	Difference
78.7%	75.8%	2.8%

Proposed Budget Detail

Date as of 8/02/2021 1:52:34 PM

Funding Programme	Group of Activities	Activity Driver	ID	Title	Current Year Budget*	Proposed 2021	Proposed 2023	Proposed 2024	Proposed 2025	Proposed 2026	Proposed 2027	Proposed 2028	Proposed 2029	Proposed 2030	Proposed 2031	Proposed Total LTP
Above Core																
Water Reform T1																
Wastewater																
WW Collection, Treatment & Disposal																
Asset Renewal																
			56176	WW Sails, Langdons, Hoani, Wilmut, Cone, Perry, Gambia, Frank, Sturrocks & Grassmere Mains Renewal	2,011	4,050	-	-	-	-	-	-	-	-	-	4,050
			56175	WW Nalder, Ruru, McLean, Wyon, Rudds, Griffiths, Digby, Razen & Tifford Mains Renewal	1,135	2,955	-	-	-	-	-	-	-	-	-	2,955
			62349	WW Akaroa Inflow and Infiltration Renewals	341	2,759	-	-	-	-	-	-	-	-	-	2,759
			62351	WW Duvauchelle Inflow and Infiltration Renewals	220	1,780	-	-	-	-	-	-	-	-	-	1,780
			56164	WW Trafalgar, Dover, Cornwall, Lindsay, Caledonian & Ranfurly Mains Renewal	2,502	1,470	-	-	-	-	-	-	-	-	-	1,470
			56167	WW Philomet, Inverell, Pegasus, Endeavour, Royalist, Effingham, Monowai & Nile Mains Renewal	3,260	978	-	-	-	-	-	-	-	-	-	978
			62348	WW Lift Station SCADA Renewals	500	-	-	-	-	-	-	-	-	-	-	-
				Asset Renewal Total	9,968	13,991	-	-	-	-	-	-	-	-	-	13,991
				WW Collection, Treatment & Disposal Total	9,968	13,991	-	-	-	-	-	-	-	-	-	13,991
				Wastewater Total	9,968	13,991	-	-	-	-	-	-	-	-	-	13,991
				Water Reform T1 Total	9,968	13,991	-	-	-	-	-	-	-	-	-	13,991
				Above Core Total	9,968	13,991	-	-	-	-	-	-	-	-	-	13,991

Proposed Budget Detail
 data as of 6/02/2021 1:52:34 PM

Funding Programme	Group of Activities	Activity Driver	ID	Title	Current Year Budget*	Proposed 2022	Proposed 2023	Proposed 2024	Proposed 2025	Proposed 2026	Proposed 2027	Proposed 2028	Proposed 2029	Proposed 2030	Proposed 2031	Proposed Total LTP
Core																
Core funding																
Wastewater																
WW Collection, Treatment & Disposal																
Growth																
			60	Programme - WW New Mains	-	-	-	-	583	1,724	1,769	1,817	1,788	1,840	1,890	11,411
			57643	WW Hayton Road Main Renewal	593	522	1,331	1,641	1,100	-	-	-	-	-	-	4,594
			57835	Programme - WW Additional Infrastructure	-	-	-	-	993	402	413	424	566	583	598	3,379
			61	WW New Pump Stations for Growth	-	-	-	-	-	-	-	-	894	920	945	2,759
			48216	WW Tyrone Street Pump Station Capacity Renewal (Stage 2) (P562)	-	-	-	-	-	-	118	2,168	-	-	-	2,286
			17979	WW Dufek Crescent Pump Station Renewal (P565)	-	-	527	471	-	-	-	-	-	-	-	999
			94	WW Subdivisions Additional Infrastructure	90	105	267	383	(0)	(0)	(0)	(0)	-	-	-	755
			48219	WW Belfast Northern Wastewater Pump Station (Stage 1)	-	-	-	-	-	-	-	-	-	184	441	625
			53889	WW Copper Ridge Private Development Agreement (PDA)	-	-	325	76	-	-	-	-	-	-	-	401
			51866	WW Wet Weather Model Construction	35	-	-	-	-	-	-	-	-	-	-	-
			30176	WW Belfast Pump Station Capacity Renewal (P562)	72	-	-	-	-	-	-	-	-	-	-	-
			55074	WW North West Belfast Private Development Agreement	110	-	-	-	-	-	-	-	-	-	-	-
			58836	WW Highfield Connection to Northcote Collector	523	-	-	-	-	-	-	-	-	-	-	-
			9386	WW South East Halswell Sewer	38	-	-	-	-	-	-	-	-	-	-	-
			42189	WW Halswell Pump Station (Stage 2) (P560)	1,125	-	-	-	-	-	-	-	-	-	-	-
				Growth Total	2,586	627	2,450	2,572	2,075	2,127	2,300	4,409	3,049	3,527	3,874	27,210
Meeting Current Levels of Service																
			596	WW Akaroa Reclaimed Water Treatment & Reuse Scheme	932	4,236	2,087	4,887	13,603	18,737	15,511	7,333	-	-	-	66,393
			2214	WW Duvauchelle Treatment and Disposal Renewal	686	1,007	2,472	1,571	2,685	2,752	2,823	-	-	-	-	13,309
			47124	CWTP Biogas Engine Upgrade (Generator 1)	-	-	-	-	-	330	5,646	5,799	-	-	-	11,775
			1376	Programme - WW New Reticulation Odour Control	-	-	872	904	450	894	897	1,001	1,029	963	961	7,771
			42154	WW Somerfield Pump Station & Pressure Main	60	118	3,263	4,283	-	-	-	-	-	-	-	7,664
			30172	WW Riccarton Interceptor (Upper Riccarton)	1,550	2,175	2,922	453	0	-	-	-	-	-	-	5,549
			42155	Programme - WW Overflow Reduction	-	-	-	-	-	-	-	-	358	491	3,780	4,628
			30173	WW Avonhead Road Main Renewal	102	-	1,225	1	11	2,752	623	-	-	-	-	4,611
			60311	CWTP Wastewater Critical Mechanical Spares	-	-	256	262	268	275	282	290	298	-	-	1,932
			60312	CWTP Wastewater Critical Electrical & Control Spares for Increased Resilience	-	-	205	210	215	220	226	232	238	-	-	1,545
			48083	WW St Asaph St Odour Treatment	456	-	(0)	-	1,213	274	-	-	-	-	-	1,488
			47125	Programme - WW Treatment Plant Ponds Midge Control	-	-	-	-	149	156	201	225	231	216	215	1,394
			58454	WW Smart Overflow Reduction	260	105	107	183	188	193	198	162	-	-	-	1,136
			48946	WW Tifford Street Pump Station & Pressure Main Capacity Renewal (P513)	-	613	391	-	-	-	-	-	-	-	-	1,004
			42153	WW Eastern Terrace Wastewater Main Renewal	-	54	818	-	-	-	-	-	-	-	-	872
			60161	WW Wigram Pump Station & Discharge Odour Treatment (P50105 and PM0105)	64	454	-	-	-	-	-	-	-	-	-	454
			57641	WW Land purchase for Wastewater Assets	-	-	-	-	-	-	-	-	119	123	126	368
			48214	WW Treatment Plant Channel Improvements	-	-	-	-	-	-	-	-	-	-	252	252
			57642	WW Southern Relief Easement	150	140	-	-	-	-	-	-	-	-	-	140
			48947	WW Opawa Road Pump Station Capacity Renewal (P544)	31	-	31	105	-	-	-	-	-	-	-	135
			2435	Programme - WW Wetwell Safety Improvements	-	-	-	24	-	-	-	-	-	-	-	24
			48309	WW Clyde to University Drive Odour Treatment	292	-	-	-	-	-	-	-	-	-	-	-
			48346	WW Rotheray & Tatahi Street Air Valve Odour Treatment	3	-	-	-	-	-	-	-	-	-	-	-
			25805	WW Colombo Trunk & Beckenham Cross Connection	27	-	-	-	-	-	-	-	-	-	-	-
			33392	WW Settlers Crescent Odour Treatment (PM0052 Discharge)	143	-	-	-	-	-	-	-	-	-	-	-
			47930	WW Southshore Wastewater Odour Treatment	291	-	-	-	-	-	-	-	-	-	-	-
			48310	WW Mairehau High School Odour Treatment (Hills Road)	276	-	-	-	-	-	-	-	-	-	-	-
			47951	WW Deans Avenue to Old Blenheim Road Corridor Odour Treatment	724	-	-	-	-	-	-	-	-	-	-	-
			48850	WW Cavendish Road Biofilter	36	-	-	-	-	-	-	-	-	-	-	-

Proposed Budget Detail

data as of 5/11/2021 1:52:34 PM

Funding Programme	Group of Activities	Activity Driver	ID	Title	Current Year Budget*	Proposed 2022	Proposed 2023	Proposed 2024	Proposed 2025	Proposed 2026	Proposed 2027	Proposed 2028	Proposed 2029	Proposed 2030	Proposed 2031	Proposed Total LTP	
			55102	WW Barnett Avenue Pump Station Capacity Improvement (PS31)	193	-	-	-	-	-	-	-	-	-	-	-	
			33398	WW Dalgety Street Odour Treatment (Southern Relief Pipe)	81	-	-	-	-	-	-	-	-	-	-	-	
			874	WW Riccarton Trunk Main	864	-	-	-	-	-	-	-	-	-	-	-	
			42603	WW Vacuum System Monitoring Equipment	567	-	-	-	-	-	-	-	-	-	-	-	
			59442	Local Pressure Sewer Systems Data Capture Renewal	98	-	-	-	-	-	-	-	-	-	-	-	
			890	WW Lyttelton Harbour Wastewater Scheme	7,636	-	-	-	-	-	-	-	-	-	-	-	
			48084	WW Scarborough Fare Odour Treatment	154	-	-	-	-	-	-	-	-	-	-	-	
			48308	WW Head to Wiggins Odour Treatment (Summer)	299	-	-	-	-	-	-	-	-	-	-	-	
			44129	WW Hay Street Sewer Works (SCIRT 11257)	252	-	-	-	-	-	-	-	-	-	-	-	
			49289	WW Bamford St Odour Treatment	236	-	-	-	-	-	-	-	-	-	-	-	
			Meeting Current Levels of Service Total		16,662	8,902	14,649	12,883	18,782	26,383	26,406	15,041	2,274	1,792	5,354	192,446	
			Asset Renewal														
			35	Programme - WW Reticulation Renewals	98	598	18,966	31,849	34,898	35,770	36,699	37,690	38,747	39,871	40,947	316,034	
			17876	WW Locarno Street Pump Station Renewal (PS20)	-	-	-	(0)	107	598	6,747	7,066	12,033	2,445	-	28,995	
			57129	Programme - WW Reactive Reticulation Renewals	-	-	1,104	1,753	1,794	1,911	2,529	2,982	3,071	2,874	2,868	20,885	
			41880	Programme - WW Infrastructure Renewals Wastewater Reticulation Affiliated with Roading Works	-	-	1,809	1,524	1,424	1,487	1,921	2,143	2,204	2,063	2,942	17,517	
			37839	Programme - WW Treatment Plant Instrumentation, Control & Automation Renewals (ICA)	80	-	1,052	1,512	1,076	2,055	2,605	2,927	1,668	2,039	2,016	16,949	
			60314	CWTP Wastewater Influent Structure Renewal (upstream of screens)	-	-	-	-	-	-	-	-	4,769	4,907	5,040	14,716	
			2304	WW Trickling Filter Media Renewal	-	-	-	(0)	107	874	6,346	5,798	-	123	708	13,957	
			41878	Programme - WW Local Pressure Sewer Systems Reactive Renewals	-	-	-	-	905	2,461	1,134	1,430	1,663	1,762	1,984	11,339	
			59076	CWTP Wastewater Treatment Plant Building Three Renewal	-	-	-	210	1,933	3,302	2,258	-	-	-	-	7,703	
			47123	CWTP Biogas Storage Upgrade	380	1,404	6,138	-	-	-	-	-	-	-	-	-	7,542
			56180	WW Tame, Rutlan, Scotsta, Norfolk, Benne, May, Tavendal, Chapte, Lingar, Mathia, Paparo & Clarena Mains Renewal	562	4,355	2,813	-	-	-	-	-	-	-	-	-	7,168
			60310	CWTP Wastewater Digester 1-4 Roof Renewal	-	-	-	-	-	-	-	2,319	2,384	2,454	-	-	7,157
			56165	WW Upper Totara, Puriri, Balgay, Minebank, Karamu, Field, Wharenui, Weka, Tui, Leinster & Bristol Mains Renewal	316	5,047	1,707	-	-	-	-	-	-	-	-	-	6,754
			56182	WW Edinburgh, Hinemoa, Nairn, Neville, Lyttelton, Torrens, Dundee, Somers & Hillier Mains Renewal	608	3,874	2,648	-	-	-	-	-	-	-	-	-	6,522
			56181	WW W Edmonds, Randolph, Marcroft, Manning, Wildberry, Hopkins, Ferry & Okeover Mains Renewal	355	3,727	2,595	-	-	-	-	-	-	-	-	-	6,322
			60320	CWTP Wastewater Ocean Outfall Diffuser Renewal	-	-	-	-	-	1,101	1,129	1,160	1,192	1,227	-	-	5,809
			56177	WW Ascot, Randwick, Flemington, Beach & Bower Mains Renewal	512	-	3,299	2,198	-	-	-	-	-	-	-	-	5,497
			60385	WW Mains Renewal - Multi-Use Arena - Barbadoes, Madras, Lichfield, Poplar, Hereford and Cashel	-	-	545	3,374	863	-	-	-	-	-	-	-	4,783
			63	Programme - WW Pumping & Storage Instrumentation Control & Automation Renewals (ICA)	-	-	380	436	475	396	513	572	588	551	549	-	4,458
			61836	Programme - WW Treatment Plant Electrical Renewals	-	-	187	290	407	485	732	816	945	265	265	-	4,403
			17865	WW Reactive Lateral Renewals	953	1,982	1,602	613	-	-	-	-	-	-	-	-	4,196
			56183	WW Allard, Edward, Geraldine & Cleveland Mains Renewal	336	2,334	1,220	-	-	-	-	-	-	-	-	-	3,554
			60313	CWTP Wastewater Secondary Contact Tanks Renewal Pipework	-	-	-	105	859	1,761	790	-	-	-	-	-	3,515
			60317	CWTP Wastewater Odour Control Renewal & Enhancements	-	-	-	-	-	-	1,129	1,160	1,192	-	-	-	3,481
			60315	CWTP Wastewater Sludge Screen	-	-	-	-	161	1,486	1,694	-	-	-	-	-	3,341
			60321	CWTP Wastewater Toe Drain Reprofitting	-	-	-	105	1,074	1,101	1,016	-	-	-	-	-	3,295
			60173	WW Pages Road Pump Station Pump Renewals (PS0001)	-	-	102	1,048	1,611	440	-	-	-	-	-	-	3,201
			37842	Programme - WW Treatment Plant Reactive Renewals	-	-	-	-	339	354	457	510	525	492	490	-	3,168
			3350	Programme - WW Reticulation Structure Renewals	-	-	-	-	339	354	457	510	525	492	490	-	3,168
			37155	CWTP Digester Roof Renewal (S&G)	430	-	102	943	966	1,101	-	-	-	-	-	-	3,112
			60316	CWTP Wastewater Pump Station A & B Pump Renewal	-	-	-	-	-	-	-	-	1,490	1,534	-	-	3,024
			60322	CWTP Wastewater Sludge Dryer 1 & 2 Renewal	-	-	-	-	215	1,101	1,355	-	-	-	-	-	2,670
			37834	Programme - WW Pump & Storage Reactive Renewal	-	-	-	-	285	297	384	429	441	412	412	-	2,660

Proposed Budget Detail

data as of 30/02/2021 1:52:38 PM

Funding Programme	Group of Activities	Activity Driver	ID	Title	Current Year Budget*	Proposed 2022	Proposed 2023	Proposed 2024	Proposed 2025	Proposed 2026	Proposed 2027	Proposed 2028	Proposed 2029	Proposed 2030	Proposed 2031	Proposed Total LTP
			60909	CWTP Wastewater Clarifier Mechanical Renewals	-	-	-	-	1,289	1,321	-	-	-	-	-	2,609
			41875	Programme - WW Pump & Storage Electrical Renewals	-	-	247	219	228	238	307	343	353	330	329	2,594
			41876	Programme - WW Pump & Storage Mechanical Renewals	-	-	163	218	217	227	292	327	336	314	314	2,408
			60923	CWTP Wastewater Solids Contact Tanks Air Distribution Pipe Renewal	-	-	-	-	-	275	1,976	-	-	-	-	2,251
			60174	WW PS0015 Alport Pump Station Pump Renewals	-	-	102	524	966	550	-	-	-	-	-	2,143
			60186	WW McCormacks Bay Road Pump Station Renewal (00057)	-	-	102	733	1,289	-	-	-	-	-	-	2,124
			2717	CWTP Earthquake Repair Occupied Buildings	3,495	1,955	-	-	-	-	-	-	-	-	-	1,955
			41875	Programme - WW Modelling	-	-	166	183	171	178	230	257	265	248	247	1,945
			60318	CWTP Wastewater Uniflare Renewals	-	-	-	157	1,450	-	-	-	-	-	-	1,607
			60180	WW Smith Street Pump Station Renewal (PS0012)	-	-	-	-	-	-	-	-	238	981	252	1,472
			44410	WW Mains Renewal Tuam St Reticulation Renewal (Brick Barrel) (Livingstone to Matheson)	6,186	1,466	-	-	-	-	-	-	-	-	-	1,466
			37837	Programme - Laboratory Renewals	-	-	-	-	268	275	282	290	105	98	98	1,417
			60179	WW Chelsea Street Pump Station Renewal (PS0009)	-	-	-	-	-	-	226	928	238	-	-	1,392
			60289	WW Buildings Asbestos Removal	-	-	102	147	150	154	158	162	167	172	176	1,389
			60168	Wastewater Manholes & Structure interventions 2022 to 2024	-	-	278	547	561	-	-	-	-	-	-	1,386
			60178	WW Stapletons Road Pump Station Renewal (PS0007)	-	-	-	-	215	880	226	-	-	-	-	1,321
			60177	WW Harrison Street Pump Station Renewal (PS0006)	-	-	205	838	215	-	-	-	-	-	-	1,257
			60223	Programme - Landfill Gas Pumping & Storage Reactive Renewals	-	-	221	102	94	99	128	143	147	137	137	1,208
			60083	Programme - WW Banks Peninsula Pumping & Storage Reactive Renewals	-	-	180	102	94	99	128	143	147	137	137	1,167
			17875	WW Cranford Street Pump Station Renewal (PSS8)	-	-	100	1,056	-	-	-	-	-	-	-	1,156
			60304	WW Taylors Mistake Road Pump Station Renewals (PS70 & 71)	-	-	41	629	451	-	-	-	-	-	-	1,120
			899	WW Step Screen Renewal	1,289	1,110	-	-	-	-	-	-	-	-	-	1,110
			60301	CWTP Landfill Gas Compressor Renewal	-	-	-	-	537	550	-	-	-	-	-	1,087
			60081	Programme - WW Banks Peninsula Pumping & Storage Instrumentation, Control and Automation Renewals (ICA)	-	-	81	109	94	99	128	143	147	137	137	1,075
			56169	WW Riccarton Mains Renewal (Hansons Lane to Euston Street)	4,541	1,066	-	-	-	-	-	-	-	-	-	1,066
			60172	WW Lock Replacement Project	-	-	205	419	430	-	-	-	-	-	-	1,053
			41879	Programme - WW Health & Safety Renewals	-	-	-	-	94	99	128	143	147	137	137	885
			60080	Programme - WW Banks Peninsula Pumping & Storage Electrical Renewals	-	-	75	18	99	85	110	123	126	118	117	870
			60089	Programme - WW Banks Peninsula Treatment Plant Reactive Renewals	-	-	106	76	71	75	96	107	110	103	103	847
			60084	Programme - WW Banks Peninsula Pumping & Storage Mechanical Renewals	-	-	106	72	68	70	91	81	83	79	78	729
			41872	Programme - WW Control Software Renewals (SCADA)	124	-	99	45	61	64	82	92	94	88	88	714
			47211	CWTP Motor Load Centre Renewal (MLCG)	644	641	-	-	-	-	-	-	-	-	-	641
			60300	Landfill Gas Control & Electrical Renewal	-	-	-	210	430	-	-	-	-	-	-	639
			60306	CWTP Wastewater Oxidation Pond Health & Safety	-	-	61	566	-	-	-	-	-	-	-	627
			37840	Programme - WW Treatment Plant Health & Safety Renewals	-	-	110	50	47	50	64	72	74	69	68	604
			48900	WW Pump & Storage Equipment Renewals 2021 (MEICA)	674	587	-	-	-	-	-	-	-	-	-	587
			48719	CWTP Wastewater Digesters 1-6 Controls Renewal	217	579	-	-	-	-	-	-	-	-	-	579
			3116	Programme - WW Pump & Storage Civil & Structures Renewals	-	-	274	254	34	0	(0)	(0)	(0)	0	(0)	562
			2575	WW Pump Station Equipment Reactive Renewals (MEICA)	345	180	184	189	-	-	-	-	-	-	-	554
			60087	Programme - WW Banks Peninsula Treatment Plant Electricals Renewals	-	-	-	184	-	-	-	356	13	-	-	554
			60307	CWTP Wastewater Tricking Filter Flow Meter Renewal	-	-	-	52	483	-	-	-	-	-	-	536
			2348	Programme - WW Reactive Lateral Renewals	-	-	-	-	71	74	71	80	79	74	73	521
			50879	CWTP Wastewater Ponds Midge Control	245	213	122	159	-	-	-	-	-	-	-	494
			56684	WW Reactive Mains Renewals & Capex Repairs	1,000	489	-	-	-	-	-	-	-	-	-	489
			37835	Programme - WW Lateral Renewals	-	-	-	-	170	140	143	-	-	-	-	453
			60082	Programme - WW Banks Peninsula Pumping & Storage Civil & Structures Renewals PRG	-	-	134	138	179	-	-	-	-	-	-	452
			60324	CWTP Wastewater Tricking Filter Mechanical Renewal	-	-	-	42	387	-	-	-	-	-	-	428
			60319	CWTP Wastewater Trade Waste Reception Facility Improvements	-	-	-	42	387	-	-	-	-	-	-	428
			17881	WW Treatment Plant Asset Reactive Renewals	314	136	140	143	-	-	-	-	-	-	-	419
			30219	CWTP Earthquake Channels Restoration	663	391	-	-	-	-	-	-	-	-	-	391

Proposed Budget Detail

data as of 9/02/2021 2:52:54 PM

Funding Programme	Group of Activities	Activity Driver	ID	Title	Current Year Budget*	Proposed 2022	Proposed 2023	Proposed 2024	Proposed 2025	Proposed 2026	Proposed 2027	Proposed 2028	Proposed 2029	Proposed 2030	Proposed 2031	Proposed Total LTP
			2343	CWTP Roading Renewals	109	-	117	-	122	-	124	-	-	-	-	363
			1006	Programme - WW Infrastructure Rebuild of the Wastewater Treatment Plant - Budget Only (Capex)	-	-	337	-	-	-	-	-	-	-	-	337
			49714	CWTP Wastewater Control Renewal (PLC37)	189	325	-	-	-	-	-	-	-	-	-	325
			37	LW Laboratory Renewals	2	109	108	102	-	-	-	-	-	-	-	319
			48906	WW Health & Safety Renewals	355	94	96	99	-	-	-	-	-	-	-	289
			60308	CWTP Wastewater Inlet Flow Monitoring	-	-	-	26	242	-	-	-	-	-	-	268
			48919	CWTP Wastewater Network Fibre Ring Renewal	494	253	-	-	-	-	-	-	-	-	-	253
			60181	WW Tilford Street Pump Station Renewal (PS0013)	-	-	-	-	-	-	-	-	-	-	252	252
			49712	CWTP Wastewater Hardware & Software Renewal (PLC4 Removal)	271	149	-	-	-	-	-	-	-	-	-	149
			60088	Programme - WW Banks Peninsula Treatment Plant Mechanical Renewals	-	-	29	-	5	11	8	95	-	-	-	148
			50436	WW Local Pressure Sewer Systems Reactive Renewals	37	37	37	38	-	-	-	-	-	-	-	112
			60085	Programme - WW Banks Peninsula Treatment Plant Civils & Buildings	-	-	-	-	-	-	-	-	-	-	110	110
			37153	CWTP Refurbish Amenities & Mezzanine Roof	963	107	-	-	-	-	-	-	-	-	-	107
			56307	WW Update Model Base Data	64	104	-	-	-	-	-	-	-	-	-	104
			55245	WW Ferry Road Masterplan Business Area Mains Renewal	1,438	98	-	-	-	-	-	-	-	-	-	98
			60086	Programme - WW Banks Peninsula Treatment Plant Instrumentation, Control and Automation Renewals (ICA)	-	-	53	-	-	-	-	-	-	-	8	61
			57838	Programme - WW Treatment Plant Electrical Renewals	-	-	0	(0)	0	(0)	(0)	(0)	0	0	0	0
			48156	WW Tilford, Bute, Linwood, Ferry, & McGregors Mains Renewal	393	-	-	-	-	-	-	-	-	-	-	-
			49228	WW Jolie, Butterfield, Pauline & Rhona Mains Renewals	40	-	-	-	-	-	-	-	-	-	-	-
			37152	CWTP Platform Renewals	31	-	-	-	-	-	-	-	-	-	-	-
			56460	WW Christchurch Northern Corridor, Factory Road Mains Renewal	15	-	-	-	-	-	-	-	-	-	-	-
			48898	WW Manholes Infiltration Reduction 2019 to 2021	1,381	-	-	-	-	-	-	-	-	-	-	-
			50583	WW Springfield, Berry, Clare & Onslow Mains Renewal	1,195	-	-	-	-	-	-	-	-	-	-	-
			49180	WW Akaroa Treatment Plant Ultra Violet Unit Renewal	15	-	-	-	-	-	-	-	-	-	-	-
			55258	WW Linwood College Mains Renewal	70	-	-	-	-	-	-	-	-	-	-	-
			49217	WW Compton to Frensham Mains Renewal	158	-	-	-	-	-	-	-	-	-	-	-
			48899	WW Pump & Storage Equipment Renewals for 2020 (MEICA)	1,086	-	-	-	-	-	-	-	-	-	-	-
			49479	CWTP Wastewater Oxidation Ponds Renewals	149	-	-	-	-	-	-	-	-	-	-	-
			49230	WW Ripon, Campbell, St Leonards Square, Denman, Whitfield & Virgil Mains Renewals	198	-	-	-	-	-	-	-	-	-	-	-
			49232	WW Flackton Street Mains Renewal	56	-	-	-	-	-	-	-	-	-	-	-
			50581	WW Barbadoes, Cannon, Besley & Madras Mains Renewal	1,498	-	-	-	-	-	-	-	-	-	-	-
			50582	WW Randolph, Hobson, Inglis, Forfar, Dee & Pascoe Avenue Mains Renewal	493	-	-	-	-	-	-	-	-	-	-	-
			55334	WW Dalgety Street Control Structure Renewal	63	-	-	-	-	-	-	-	-	-	-	-
			49226	WW Hay to Linwood Mains Renewal	3	-	-	-	-	-	-	-	-	-	-	-
			24762	WW Whero Avenue Reticulation (Diamond Harbour)	77	-	-	-	-	-	-	-	-	-	-	-
			55593	Wastewater Renewals Fast Track Delivery of Minor Projects 2019 to 2020	254	-	-	-	-	-	-	-	-	-	-	-
			49231	WW Aylesford, Speight & Thornton Mains Renewal	350	-	-	-	-	-	-	-	-	-	-	-
			33927	WW Akaroa Foreshore North Mains Renewal (Beach & Rue Jolie)	169	-	-	-	-	-	-	-	-	-	-	-
			49465	CWTP Wastewater Renewals 2019	110	-	-	-	-	-	-	-	-	-	-	-
			41283	WW Riccarton Road (Harakeke to Matipo)	373	-	-	-	-	-	-	-	-	-	-	-
			49715	CWTP Wastewater Biosolids Dryer Silo Controls Split	412	-	-	-	-	-	-	-	-	-	-	-
			49481	CWTP Wastewater Earth Bar Renewals (on MLC's & 11KV)	39	-	-	-	-	-	-	-	-	-	-	-
			37157	CWTP Northern Toe Drain Pump Station Renewals	109	-	-	-	-	-	-	-	-	-	-	-
			45454	WW Pump & Storage Equipment Renewals 2019 (MEICA)	503	-	-	-	-	-	-	-	-	-	-	-
			63741	Dewatering Consent Renewal	60	-	-	-	-	-	-	-	-	-	-	-
			50580	WW Enson, Fildes & Louison Mains Renewal	1,559	-	-	-	-	-	-	-	-	-	-	-
			50579	WW Neville, Domain, Edinburgh, Cooke, McCombs, Selwyn & Stennes Mains Renewal	1,354	-	-	-	-	-	-	-	-	-	-	-
			41393	Programme - WW Treatment Plant Mechanical Renewals	-	-	0	(0)	0	0	(0)	(0)	(0)	(0)	0	(0)
			37841	Programme - WW Treatment Plant Civil Structures & Buildings	-	-	-	-	-	(0)	-	-	-	(0)	-	(0)

Funding Programme	Group of Activities	Activity	Driver	ID	Title	Current Year Budget*	Proposed 2022	Proposed 2023	Proposed 2024	Proposed 2025	Proposed 2026	Proposed 2027	Proposed 2028	Proposed 2029	Proposed 2030	Proposed 2031	Proposed Total LTP
					Asset Renewal Total	40,714	33,409	50,650	54,445	61,508	64,056	74,895	71,397	76,305	66,733	61,572	614,971
					Level of Service Improvement												
					44909 WW Manholes Sealing in Flood & Surface Ponding Prone Areas 2019 to 2021	42	-	-	-	-	-	-	-	-	-	-	-
					48895 WW Manholes Screening Overflows 2019 to 2021	91	-	-	-	-	-	-	-	-	-	-	-
					46589 WW Olliviers Reserve Wastewater Odour Treatment	21	-	-	-	-	-	-	-	-	-	-	-
					Level of Service Improvement Total	154	-	-	-	-	-	-	-	-	-	-	-
					New Service												
					60260 CWWTP Sludge Holding Tank (to stop requirement for 24/7 manned operation)	-	-	102	2,252	2,416	550	-	-	-	-	-	5,321
					885 WW Reuse (C3 & C4 Water)	-	-	-	-	-	-	-	-	-	491	1,890	2,381
					60305 WW Pump Station Flow Meters at all Stations	-	-	98	335	344	387	-	-	-	-	-	1,164
					20714 WW New Schemes	-	-	-	-	-	-	-	-	-	-	504	504
					60303 WW Pressure Sewer System Monitoring & Control Relocation (SCADA)	-	-	-	-	107	220	113	-	-	-	-	440
					81 WW Wainui Sewer Reticulation & Wastewater Treatment Plant	-	-	-	-	-	-	0	0	-	-	-	0
					New Service Total	-	-	201	2,588	2,867	1,158	113	0	-	491	2,394	8,810
					WW Collection, Treatment & Disposal Total	59,917	42,939	67,950	72,488	85,232	85,723	105,713	90,847	81,828	72,543	73,175	784,438
					Wastewater Total	59,917	42,939	67,950	72,488	85,232	85,723	105,713	90,847	81,828	72,543	73,175	784,438
					Core funding Total	59,917	42,939	67,950	72,488	85,232	85,723	105,713	90,847	81,828	72,543	73,175	784,438
					Core Total	59,917	42,939	67,950	72,488	85,232	85,723	105,713	90,847	81,828	72,543	73,175	784,438
					Grand Total	69,885	54,930	67,950	72,488	85,232	85,723	105,713	90,847	81,828	72,543	73,175	796,429

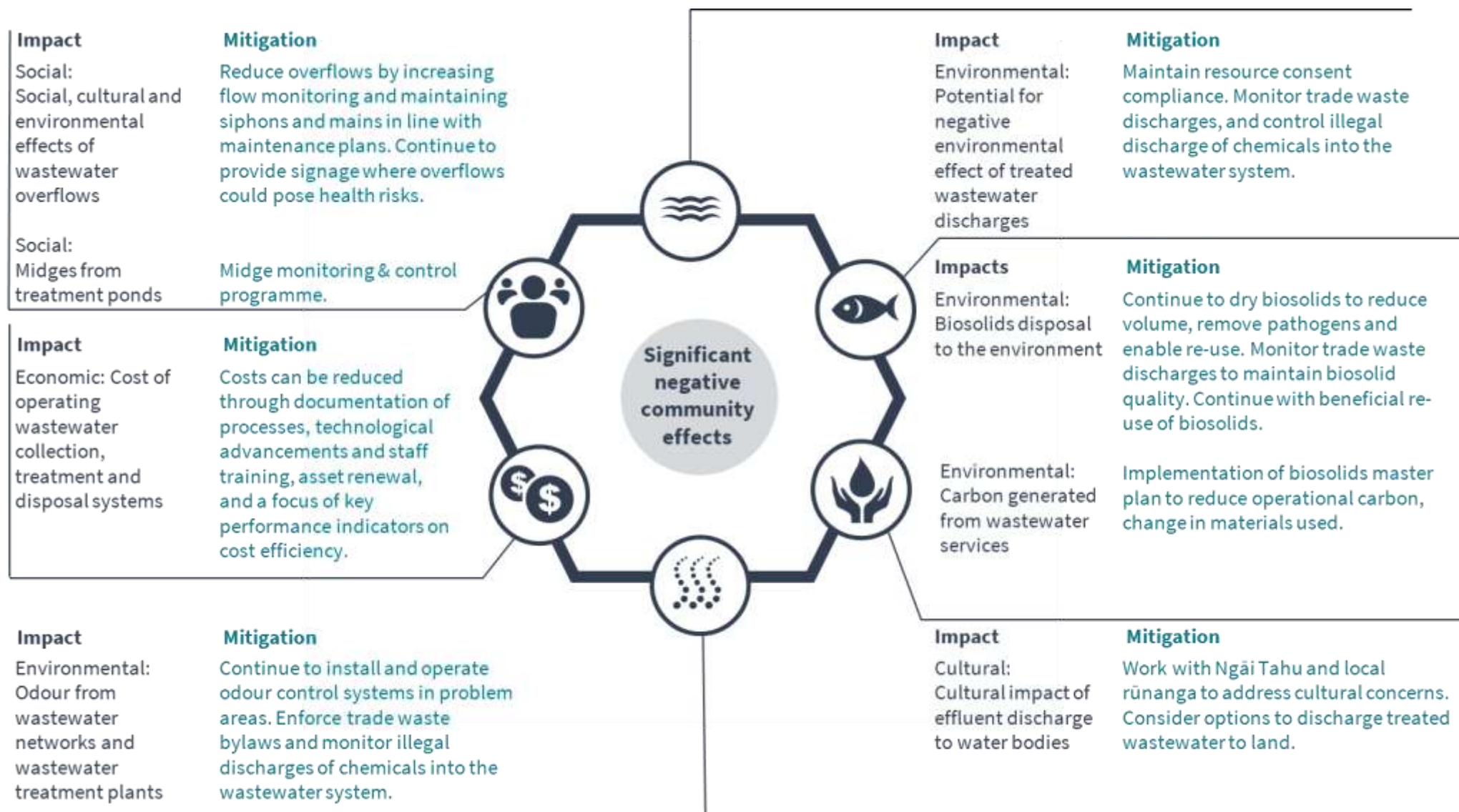
* The Current Year Budget in the capital schedules may differ from the Annual Plan 2020/21 total capital in the financial summaries in section 9 above. The Current Year Budget includes any funding carried forward from the prior year-end and other changes approved since the Annual Plan was published.

11. Does this activity have any significant negative effects on social, economic, environmental or cultural wellbeing, now or in the future?

Negative Effect	Mitigation
Social	
1. Social, cultural and environmental effects of wastewater overflows	<p>Maintain resource consent compliance.</p> <p>Reduce overflows through projects identified in the city-wide wastewater optimisation project.</p> <p>Fully calibrate wastewater network models through using recent flow monitoring data.</p> <p>Increase flow monitoring on wastewater pump stations and trunk sewers.</p> <p>Continue to implement processes for erecting signage and public notification where overflows could result in health risks.</p> <p>Provide on-site attenuation where required in capacity constraint areas.</p> <p>Clean and maintain siphons and wastewater mains in accordance with maintenance plan.</p> <p>Use flood modelling scenarios to identify areas at risk of inundation and undertake projects to reduce risk of flood water getting into the wastewater network.</p>
2. Social effects as a result of Midgees from treatment ponds	<p>Midge control programme:-</p> <ul style="list-style-type: none"> • Jet boat and midge dredge on the ponds every fortnight during breeding season • Midge traps deployed and weekly monitoring programme
Economic	
3. Cost of operating wastewater collection, treatment and disposal systems	<p>Follow documented procedures and industry best practice for cost minimisation.</p> <p>Follow technological developments and implement cost saving initiatives on a continuous improvement basis.</p> <p>Focus process key performance indicators on cost efficiency.</p> <p>Ensure staff are kept updated with technological and operational best practice through attendance at conferences and participation in specialist industry working groups.</p>
Environmental	
4. Odour from wastewater networks and wastewater treatment plants	<p>Odour control systems installed in problem areas.</p> <p>Operate odour control systems in accordance with procedures including regular maintenance to remove build-ups of odour causing compounds.</p> <p>Robust work planning at wastewater treatment plants to avoid odour events.</p> <p>Good design of wastewater networks to prevent creation of anaerobic conditions / adequate ventilation.</p> <p>Enforce trade waste bylaws.</p> <p>Monitor and control illegal discharge of chemicals and toxins to the wastewater system.</p>

Negative Effect	Mitigation
5. Potential for negative environmental effect of treated wastewater discharges	<p>Maintain resource consent compliance.</p> <p>Operate and maintain treatment plant and disposal services according to best practice.</p> <p>Monitor trade waste discharges to ensure unacceptable pollutants are not released to the WWTP.</p> <p>Monitor and control illegal discharge of chemicals and toxins to the wastewater system to avoid process failure.</p>
6. Biosolids disposal to the environment	<p>Continue to dry biosolids to reduce volume, kill pathogens and enable reuse.</p> <p>Monitor trade waste discharges to ensure potential pollutants are not released to the wastewater treatment plants and carried over into the biosolids, maintaining quality of biosolids.</p> <p>Continue with beneficial reuse of biosolids.</p> <p>Implementation of biosolids master plan to reduce operational carbon</p>
7. Carbon generated from wastewater services	<p>Implementation of biosolids master plan to reduce operational carbon</p>
Cultural	
8. Cultural impact of effluent discharge to water bodies	<p>Work collaboratively with Ngāi Tahu and local rūnanga to find cost effective solutions that address cultural concerns.</p> <p>Consider options to discharge treated wastewater from Akaroa and Duvauchelle to land instead of Akaroa Harbour.</p> <p>Implement the project to divert wastewater from Lyttelton, Governors Bay and Diamond Harbour to the Christchurch Wastewater Treatment Plant, instead of Lyttelton Harbour.</p>

The following diagram outlines the potential negative effects of wastewater collection, treatment and disposal activities on the community and how these impacts can be minimised or mitigated.



12. What risks are identified and what controls and mitigations are planned?

Council’s Risk Policy and assessment framework outlines its approach to managing risk. The framework provides a way to consistently identify, record and assess risks, and prioritise those that need to be mitigated.

Risk management is inherent in all of Council’s wastewater activity processes. Significant risk management strategies for this activity include:

- **Management escalation and review:** The Wastewater Unit holds a monthly management meeting to review progress on operational activities.
- **Asset design:** For Council delivered projects, all elements are designed and delivered in accordance with Council’s Infrastructure Design Standards and Construction Standard Specification. These two documents set in place the expectations of fit-for-purpose design and construction practises.
- **Delivery:** During construction, quality assurance processes are in place to confirm that the works are undertaken in accordance with expectations and guidelines.
- It is recommended that the risk tables in Section 5 of the AMP are viewed in conjunction with this Activity Management Plan to understand the challenges that face the water supply activity, the mitigation measures, and the residual risk levels.

In various briefing presentations to the Councillors, the following high level risks were outlined as being key to the activity. There are a number of more specific risks that affect the activity, but they are not presented in this document due to the number of risks and quantity of detail.

Risk Title	Caused By:	Resulting In:	Controls and Mitigations
There is a risk that/of:			
There is a risk while managing the wastewater infrastructure to provide wastewater collection and treatment services, that Council pollutes the environment causing environmental damage.	<ul style="list-style-type: none"> • Operations and/or Maintenance failures in wastewater treatment processes • Failure to maintain network capacity • Treatment plant not properly maintained and/or operated • Lack of staff/contractor capability and/or capacity, or negligence • Vandalism, theft and deliberate damage • Insufficient trained and experienced staff (Council and Citycare) • Wastewater entering the environment from broken or leaking pipes, septic tanks or wastewater overflows 	<ul style="list-style-type: none"> • Water borne disease outbreak or unacceptable public health issues • Breach of consent and prosecution by regulator • Costly clean-up and/or legal issues • Reduction in ecosystem health. (Low water quality resulting in poor ecological and cultural health of waterways) • Offensive or objectionable odour • Increasing dissatisfaction from community and increased number of complaints to Council • Loss of amenity value • Reputational damage • Negative economic impact • Failure to provide waste water collection in a safe and efficient manner to meet ratepayer expectations and/or Levels of Service (LoS) • Unbudgeted reactive expenditure 	<ul style="list-style-type: none"> • Providing sufficient funding in the Long Term Plan for operational, maintenance and capital costs • Programmed CCTV inspections of high consequence of failure pipes • Qualified and experienced Maintenance staff to operate and maintain the wastewater treatment plants to documented procedures and contractor plans • Regular maintenance • Appropriately resourced 3 waters business unit • Increased communications and engagement with community, ECan and local iwi

Risk Title There is a risk that/of:	Caused By:	Resulting In:	Controls and Mitigations
		<ul style="list-style-type: none"> Excess contaminant loading on stormwater treatment facilities and waterways as a result of overflows 	<ul style="list-style-type: none"> Microbial and chemical contamination monitoring, risk assessment and reactive processes Monitoring of Inflow/Infiltration Installing all fuel tanks above ground within adequate containment structures to capture leaks Appropriate decommissioning of retired infrastructure Clean up, disinfection and communication plans Monitoring and mapping high odour (H2S) risk areas to inform planning of future Odour treatment facilities Succession plans for all critical and specialist roles requiring specific knowledge, especially where scarcity in the market exists Maintaining up to date Asset Management Plans with renewal programmes based on the best available data ensuring prioritisation to the most critical assets
<p>There is a risk that Councils wastewater services do not comply with its ECan resource consents or the Health Act.</p>	<ul style="list-style-type: none"> Operations and/or Maintenance failures in wastewater treatment processes Treatment plant not properly maintained and/or operated due to insufficient maintenance and renewals budget Lack of staff/contractor capability and/or capacity, or negligence 	<ul style="list-style-type: none"> Breach of consent and abatement notice by regulator Breach of consent and infringement notice by regulator Breach of consent and infringement notice by regulator Breach of consent and prosecution by regulator Costly legal issues and unplanned expenditure Reputational damage 	<ul style="list-style-type: none"> Monitor and record resource consent parameters Flow and load models maintained for each plant and compared regularly against actual flows and loads to determine need for upgrades or process changes Open and honest communications with stakeholders; community, local iwi and the regulator (ECAN)

Risk Title There is a risk that/of:	Caused By:	Resulting In:	Controls and Mitigations
			<ul style="list-style-type: none"> • Maintain appropriate Trade Waste Bylaws to reduce likelihood of overloading the treatment plants. • Providing sufficient funding in the Long Term Plan for operational, maintenance and capital costs

As discussed above, the AMPs list a number of activity specific risks. Robust risk identification processes identify activity specific risks, causes and consequences from the ProMapp risk register, and then expanding on this with the risks and challenges that face the business. All risks are included in the Asset Management Plan (AMP) Section 5.3.2 - Activity Specific Risks and relate to risks such as:

1. Major/critical infrastructure failure;
2. Outdated or inadequate hydraulic models to effectively inform planning decisions;
3. Climate change effects on infrastructure;
4. Impacts on economic development ;
5. Insufficient investment of CAPEX and OPEX; and
6. Inability to meet Councils Carbon Neutrality goals - The Government has recognised the pressing need for long-term greenhouse gas emissions reductions, setting national targets in 2019 which CCC have in turn adopted.

These are:

- Net zero gas emissions by 2045
- 50% reduction from 2016/17 baseline levels by 2030 (excluding methane)
- 25% minimum reduction in methane by 2030 and 50% reduction by 2045

This activity plan includes funding of the biogas master plan which is aimed at reducing the operational carbon generated by the Christchurch wastewater treatment plant. The master plan comprises of 3 stages which specifically targets greenhouse gas emission reductions to support climate change. Stages 1&2 address health and safety and biogas storage issues that we deliver some marginal carbon savings before the later improvements to co-generation engines FY27/28 deliver the full benefits of the biosolids master plan.