

Hagley/Ferrymead Community Board Plan 2015/16

Together in a great place



Source of images on front cover:

Child's painting of Our Community: Lauren, 12 years old, Woolston Development Project Afterschool Programme

Guided walk on Heathcote Towpath, The Breeze Walking Festival, 2015

Heathcote River, Michelle Sullivan, *Christchurchdailyphoto.com*

Tree planting, Sara Templeton, 2015

Linwood Youth Festival Event, 2014

Scarborough Paddling Pool, Sara Templeton

Message from the Community Board

Kia ora. Talofa lava. Kia orana. Malo e lelei. Fakaalofa lahi atu. Bula vinaka. Namaste. Malo ni. Halo ola keta. Mauri. Fakatalofa atu. Greetings.

Firstly the Hagley/Ferrymead Community Board would like to thank you all for the work we have done together to produce this Community Board Plan! Thank you to all the school children who produced the wonderful art in this Plan and who shared their thoughts through surveys and focus groups, and thank you to the young people, residents, groups and organisations who participated in the community sessions held in October and November 2015. We would also like to thank the Collaborative Planning Group community members, Council staff and Board members. A lot of hours went into getting this process right and trying to hear the different voices that have contributed to this plan - thank you all. Thank you also to Sally Pitama who was our kaumatua during the community sessions, and all Council staff who contributed in this process.

As the people you elected and who are your closest link to democratic processes, it was important to us to hear from you about what you value, what you do, what you would like to be doing and what needs to change for you to do these things. What you told us has shaped this plan and we are committed to working with grassroots communities and community groups to achieve your aspirations. We recognise that a one-year plan will not achieve all the actions that we have identified. We are however committed to working on these actions and getting as much done as we can of the work done within this timeframe. This will inform the Community Board's input into the Christchurch City Council's 2016/17 Annual Plan and, in future, Long Term Plan.

Over many years the community has said that it is important to them that we have a recreational facility that includes a swimming pool in the Linwood/Woolston area. We are excited that we have funding committed to this work in the 2015/16 Long Term Plan. What is more exciting is that you as communities have offered to work with us to make sure that we get this important facility right for health, social and recreational benefits of children, young people, families, older adults, people with disabilities, people from different ethnic backgrounds, and everyone in our ward. We pledge to work with you every step of the way to achieve this dream together.

We recognise that our ward is home to diverse groups of people. We have young and old, people on different income-levels, people from different cultures, people with varying abilities, and people with a multitude of interests, aspirations and needs. It is the people in the ward who are important to us and to whom we commit ourselves to working with to achieve this plan.

*He aha te mea nui o te Ao? Māku e kī atu, He tangata, he tangata, he tangata!
What is the most important thing in the world? It is people, it is people, it is people!*



Community Board Members

*(From left to right in photo) Alexandra Davids · Sara Templeton (Chairperson) · Councillor Yani Johanson
Councillor Paul Lonsdale · Islay McLeod (Deputy Chairperson) · Joe Davies · Brenda Lowe-Johnson*

Role of the Hagley/Ferrymead Community Board

In Christchurch there are six metropolitan and two rural Community Boards. The purpose of a Community Board is to provide leadership on issues that are important to the local community and Council.

The role of the Hagley/Ferrymead Community Board is to find out what local communities are interested in and concerned about. Depending on what the issues are, the Board advocates for and/or makes decisions in the interests of the community, and works with the Council, community groups and organisations, schools and others to build strong communities, good governance, a liveable city, a healthy environment and a prosperous economy. The Board builds relationships with community groups and organisations who understand and work with residents in the ward so that there is two-way communication.

Some of the matters that the Board considers include:

- changes and activities on parks, reserves and waterways;
- controls and changes to roads and traffic;
- approval of tree removals on Council land;
- carrying out and oversight of local capital projects;
- advocating for local facilities and services to meet community aspirations and needs through the Council's Annual and Long Term Plans;
- submissions to the Council on projects, bylaws and reviews;
- recommendations to the Council on central city and citywide projects;
- allocation of community funding to projects that benefit residents in the ward;
- acknowledging and celebrating the efforts and contributions of individuals and groups in the community; and
- input into Council policy and planning processes.



Linwood Youth Festival Experience, 2014

Ward Overview

The Hagley/Ferrymead ward area includes the east city suburbs of Avonside, Bromley, Christchurch Central, Ferrymead, Heathcote, Linwood, Mt Pleasant, Phillipstown, Redcliffs (Moncks Bay), Richmond South, Sumner, Taylors Mistake and Woolston.

The population of the ward is 49,050 and includes:

- 8,265 children aged 0 to 14;
- 7,125 young people aged 15-24; and
- 6,264 older adults aged 65 and over.

Eighty three percent of the wards population are European/Pakeha, 11.3% are Māori, 7.5% are Asian, 4.8% are Pacific Peoples and the rest identify as other ethnicities. Based on the 2013 Disability Survey¹, 24% of the New Zealand population identify as being disabled. 143,000 people identified as being disabled in Canterbury. Fifty percent of people aged 65 and over have a disability, most of the disabilities are to do with changes as the body ages. The Council's Ageing Together Policy celebrates the strengths and wisdom of the older persons' sector while acknowledging changes as the body ages.



Guided walk on Heathcote Towpath, The Breeze Walking Festival, 2015

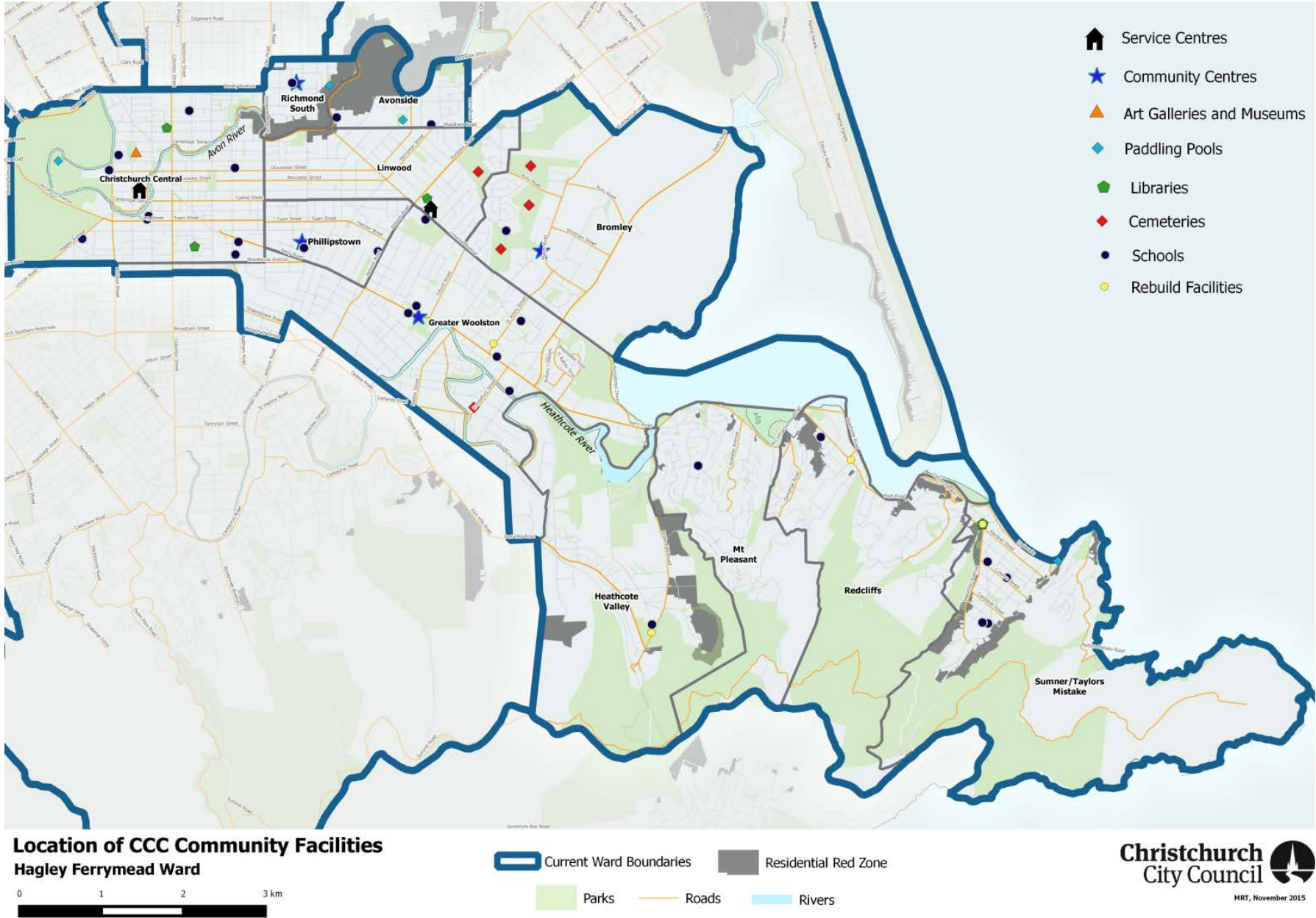
Important Māori landmarks and heritage sites include Cambridge Green Reserve that is the site of Pauri pā the pā of the noble chief Tautahi; Moa Cave that possibly provided shelter for some of the earliest people to arrive in Aoteroa; Rapanui also known as Shag Rock that stands at the entrance of the Avon-Heathcote Estuary; and Nga Hau E Wha Marae that is on the border with the Burwood/Pegasus Ward. There are numerous other heritage and sites of significance in the ward.

The Hagley/Ferrymead ward is characterised by its natural environment that includes the Avon-Ōtākaro River, Heathcote-Ōpāwaho River, the Estuary; beaches and coastal areas; and the Port Hills. There are a variety of social amenities that include the Ferrymead Heritage Park, the Christchurch Coastal Pathway, Washington Way Skate Park, and Hagley Park.

There is a mix of residential, commercial and industrial activity in the ward. Most of the industrial activity occurs in Bromley, Phillipstown and Woolston. The commercial activity is found throughout the ward with large commercial activity in Christchurch Central, Eastgate Shopping Centre and Ferrymead.

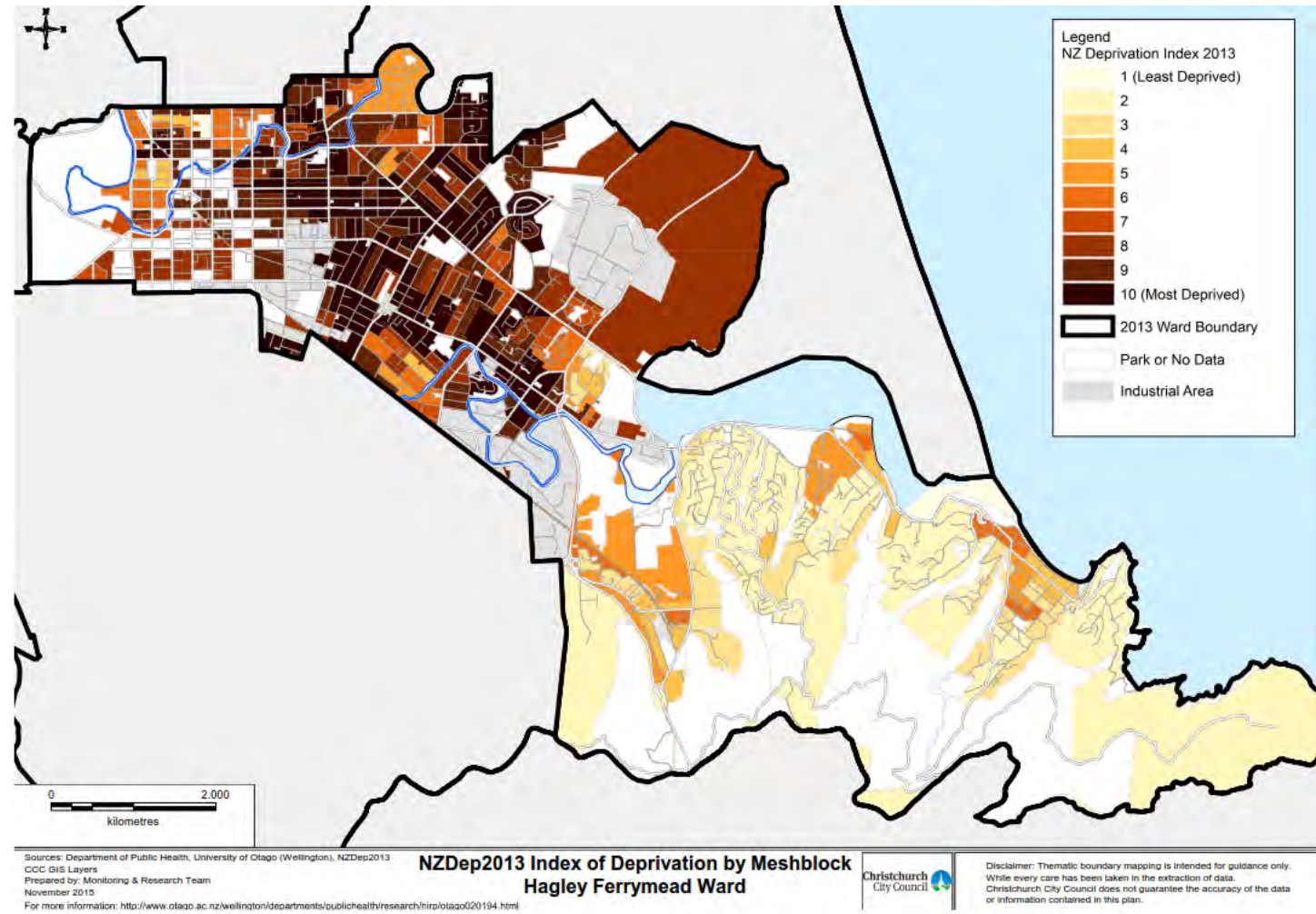
¹ Statistics New Zealand. (2014). Disability Survey: 2103. Wellington, New Zealand. Accessed from <http://www.stats.govt.nz/searchresults.aspx?q=disability>

Location of Council Community Facilities



Deprivation Index

Census Area Unit	NZDep 2013	2013 Census Area Unit Population
Avon Loop	8	3,375
Bromley	8	2,907
Cathedral Square	7	501
Ferrymead	7	3,210
Hagley Park	6	1,023
Heathcote Valley	3	1,983
Linwood	9	4,293
Linwood East	9	2,004
Linwood North	8	2,409
Moncks Bay	1	2,922
Mt Pleasant	1	3,249
Phillipson	9	3,786
Richmond South	9	2,001
Sumner	1	3,612
Woolston South	8	2,346
Woolston West	9	3,405



The Deprivation Index 2013 combines nine variables from the 2013 census that show eight dimensions of deprivation. A scale of 1 (least deprived) to 10 (most deprived) is used. A score of 10, for instance, means that the area is in the most deprived 10 per cent of areas in New Zealand based on the scoring system used. The score applies to areas rather than individual people. It takes into account income, employment, qualifications, home ownership, communication, support, living spaces and transport.²

² Atkinson, J.; Salmond, C., & Crampton, P. (2014.) *NZDep2013 Index of Deprivation*. Wellington, New Zealand: University of Otago.

How the Community Board heard from the Community

Using a community governance model, the Community Board set out to ensure that the diverse voices in our community were listened to for the development of this Community Board Plan as followed:

- over seventy people attended two community sessions for residents and community groups and organisations;
- about 110 children completed a survey;
- nineteen children participated in two focus groups;
- twelve residents completed a survey; and
- twenty-two children provided art work.

The Community Board asked:

- What do you value or like in your neighbourhood or community?
- What are you doing in your neighbourhood or community?
- What would you like to be doing in your neighbourhood or community?
- What needs to happen for you to do what you would like to be doing?
- What can you, your neighbours and community groups and organisations do to make this happen?
- What would an awesome Hagley/Ferrymead Ward feel like to live in?

In putting together this Plan, the Community Board also took into account other matters of interest and concern to residents that it had considered over time.

With the voices of the community in mind, this Plan takes into account the Council's strategies and bylaws and seeks to complement these and other approved Council plans.



Community Board Plan - Community Session, 22 October 2015

Our vision and what we value

As residents and communities in the Hagley/Ferrymead ward, our vision is together in a great place.

Our ward is home to many cultures and we are diverse, innovative, creative, resilient and well-connected people. We value diversity. We take care of each other and find local solutions to local community issues. There is a strong sense of belonging and local communities have unique features that we are proud of. We value each other, community spirit, participation and inclusiveness. There is a diversity of incomes spread across our ward and we acknowledge that some of us live in vulnerable positions and experience hardship and poverty.

We have a wide variety of activities, sports, events; programmes and projects to get involved in. We value all the time we can get together and have fun. We value our community groups and organisations, the volunteers who make a significant contribution to getting things done and fostering strong community spirit.

As children we value our friendly neighbours, and a place to call home. We play with our friends at home and in parks, ride bikes, go skateboarding, and go to the mall and library. As young people we value socialising, and doing things that make us feel connected to our neighbourhoods.

We value our rich and diverse natural environment, and as stewards of our natural heritage want to protect and enjoy the land of our ancestors and the shores and waterways of our ward. Sustainability is important to us. Our unique and bio diverse land and waterways include the Port Hills, beaches and coastal areas, tussock grasslands, rivers, estuaries and wetlands. Kaitiakitanga, or guardianship of the environment, is a responsibility we all share. Clean water and air are important to us.

We value our proximity to the city that is enhanced by good bus routes, cycle and walk ways, and roads and we have a variety of local shops, cafes, restaurants, public amenities and entertainment that we value.

Māori and European history is important to us and we value being able to tell our stories, respect our past and integrate it into our daily lives.



Lauren, 12 years old. *Our community.* Woolston Development Project Afterschool Programme

Our aspirations

As residents and communities, we would like:

Strong communities

- Healthy, happy and safe people.
- Celebration of our cultures.
- Active and healthy communities.
- Thriving learning places.

A healthy environment

- Flourishing natural environment.
- Improved recreational use of natural environment.

A liveable city

- Easy travel options in our neighbourhoods and communities.
- Places where we can get together and have fun.
- Affordable houses that have space for us to play and socialise.

A prosperous economy

- Increase in the number of local businesses that employ and pay people at least a liveable wage.

Good governance

- Local democracy.
- Increase participation in decision-making by partnering with and building capacity of local communities.

My community

Water, birds, cats, dog.

River - lake, not clean.

Buildings, mall, houses, school,
afterschool programme.

Sun is shining,

Feel the breeze,

So you can breathe.

Rhyda, 8 years old, Woolston Development

Project Afterschool Programme



Ella, 9 years old and Holly, 7 years old. Our world. Woolston Development Project, Afterschool Programme

Strong communities

Waiho i te toipoto, kaua i te toiroa.

Let us keep close together, not wide apart.

We live in a series of villages and neighbourhoods that are not only connected, but also have strong identities. We all want to spend time together as this makes us feel healthy, happy and safe, and gives us a sense of belonging and identity. Our local community development groups and organisations provide services and programmes that result in local solutions to our aspirations and needs. We would like for local community groups and organisations to have more resources so that they continue to do the work they do so well.

We recognise that there are people in our communities who have become increasingly vulnerable because of stress, financial constraints, and housing challenges, and who have no sense of belonging and lack connections with others. We would like to work towards a more just, fair and connected community.

Our aspirations	Key initiatives	Actions and Community Board role
Healthy, happy and safe communities.	Community development work that makes families and their neighbours healthy, happy and safe.	Advocate for longer term and more funding for community development work.
		Fund community development, recreation and youth work.
		Advocate for red zone land to be used for initiatives such as community gardens and men's sheds.
		Advocate for and fund local initiatives, activities and events that promote pride and identity, especially for young people.
		Promote and fund Neighbourhood Week, and neighbourhood group initiatives.
	Reducing harm of alcohol on families.	Advocate to limit liquor licenses in the Inner City East, North-West Inner City, and Inner City West areas.
	Reducing harm of debt on families.	Advocate for change in money-lending practices.
	Reducing crime.	Advocate for community and police initiatives that promote sense of safety.
		Advocate for safety measures on parks, particularly Linwood Park, and streets.
Celebration of our cultures.	Getting to know our place, our people and our cultures.	Provide and/or support awareness raising on local places of cultural and historical importance, particularly to Māori.
		Adopt treaty-based approaches to the Community Board's way of working.
		Advocate for and support initiatives that celebrate our different cultures.
Active and healthy communities.	Affordable social, sporting, creative and fun activities.	Fund accessible, local, social, sporting, creative and fun activities and events.
		Fund local initiatives that promote swimming in the ward.
Life-long learning.	Creating opportunities for children and young people to learn and grow.	Advocate to the Ministry of Education in support of local school issues.
		Fund learning and development opportunities for children and young people.

I want to reintegrate with our old neighbours who have returned to live in their new houses.

Mt Pleasant resident

I would like to help young people to realise their potential so that they in turn have an awesome impact on their community!

Young person, youth worker, Linwood

I feel lucky and happy, also very safe, because of the space around here and the awesome people!

Child, Heathcote Valley

A healthy environment

Ki te kore ngā pūtake e mākūkūngia, e kore te rākua e tupu.

If the roots of the tree are not watered, the tree will not grow.

Our rivers include the Heathcote-Ōpāwaho River and the Avon-Ōtākaro River. The Estuary is also in our ward. We would like a clean and healthy environment that we can enjoy and safely access. We would also like cleaner air especially where there is industrial activity. We want a clean estuary and rivers, and improved access to these for fun activities. We also want our bays protected from rising sea levels. A policy that addresses climate change issues in a practical way is important to us. We will leave a better natural environment for future generations.

Our aspirations	Key initiatives	Actions and Community Board role
Flourishing natural environment.	Protecting the Bays from rising sea levels.	Collate information and advocate for appropriate actions to mitigate impact of rising sea levels.
	Clean estuary, Heathcote- Ōpāwaho and Avon- Ōtākaro rivers.	Advocate for Stronger Christchurch Infrastructure Rebuild Team and repair-rebuild agencies' plans to include improvement of the quality of waterways that they affect. Support, fund and advocate for oversight of local waterways enhancement and conservation projects.
	Improved air quality.	Advocate for clean air measures to be implemented in mixed residential industrial areas.
Increased use of natural environment.	Improved and maintained local tracks and reserves.	Advocate for repair of Staunton Esplanade Reserve and Heathcote Pump tracks, and maintenance of local parks and reserves.
		Support and advocate for the coordination of a maintenance plan of tracks and reserves between Council and community.
		Advocate for reinstatement of steps at Beachville Reserve.
		Advocate for increased activities on the Heathcote- Ōpāwaho and Avon- Ōtākaro rivers.

Lakes in Heathcote Valley near Heritage Village are great, but need to be 'finished off' so that we can walk around them at all hours.

Mt Pleasant resident

We would like a better network of paths connecting with the Port Hills and the environment.

Redcliffs resident

We want a clean and healthy environment not a waste dump for pollutants.

Avon-Heathcote Estuary-Ihutai Trust worker

A liveable city

He waka eke noa.

A canoe on which everyone may embark.

We value an accessible place to live. We would like to travel and get into public facilities and amenities safely within our local neighbourhoods and communities. We would like to have a recreational facility with a swimming pool in the Linwood/Woolston area that is accessible for older adults and people with disabilities, children and young people, and is affordable for those on low incomes. We would like to engage in other fun and social activities in affordable and accessible local community facilities and parks.

Some of our houses are old and broken and many of us cannot afford warm, safe housing. In some parts of the city, particularly the inner city, many of us have moved out because the houses we lived in were demolished after the 2011 earthquakes, and in a lot of cases we cannot afford the new developments. We would like for older adults and families to have access to low-cost houses in places we choose to live. We would also like to access important amenities such as pharmacies, banks, post shops, supermarkets and medical centres.

Our aspirations	Key initiatives	Actions and Community Board role
Easy travel options.	Increased opportunities for walking, biking and use of public transport.	Advocate for communication with communities on safe and timely repair programme of walk ways and roads.
		Advocate for increase in infrastructure that encourages walking and biking.
		Advocate for regular and effective public transport and other travel modes.
		Advocate for better bus service in the Inner City East area.
		Advocate and support for the development and completion of the Christchurch Coastal Pathway.
Places for people to get together and have fun.	Building and looking after community facilities and spaces that are accessible.	Support community engagement on the Linwood/Woolston aquatic/community facility.
		Decide on the build of Redcliffs, Heathcote, Sumner and Woolston community and library facilities.
		Support development of a permanent Phillipstown Community Hub.
		Support the building of Mt Pleasant Community Centre.
		Advocate for the beautification of Moa Reserve and creation of a pocket park in the Victoria Neighbourhood area.
Housing that supports healthy living.	Increased affordable housing with green space.	Identify opportunities for and advocate to have green space in high density areas.
		Advocate for the increase of affordable home-ownership.
		Advocate for increase of social housing that has sufficient green space.
		Advocate for replacement of bedsits and low-cost rental housing in the Inner City East.

We want a swimming pool in our ward.
Community worker, older adult, Linwood

We don't want a central city that is unaffordable for people on low-incomes to live in.
Resident, Central City

We would like a better bus service that recognises the Inner City East as a destination.
Community worker, Inner City East

A prosperous economy

Hapaitia te ara tika pumau ai te rangatiratanga mo nga uri whakatipu.

Foster the pathway of knowledge to strength, independence and growth for future generations.

A significant number of us are poor and would like jobs so that we can provide for ourselves and our families. We would like to have more local creative community and businesses enterprise that result in a thriving and social industry that makes use of spaces and buildings that are currently available.

Our aspirations	Key initiatives	Actions and Community Board role
More job opportunities.	Increase in jobs that pay people at least a liveable wage.	Advocate for an increase in local jobs opportunities.
		Advocate for jobs that pay young people and other residents at least a liveable wage.
	Increase in social and business enterprise.	Advocate for the rebuild of the Stanmore Road Shopping Centre.
		Advocate for and promote creative community and business enterprise, particularly in the Woolston area.

We want to be able to get jobs without people asking us if we have experience, we are young.
Linwood young person

I would like to see the creative enterprises thrive in the post-industrial landscape.
Woolston resident

We want the Stanmore Rd Shopping Centre to be rebuilt and to do well.
Resident, Linwood

Good governance

Ko koe ki tēnā, ko au ki tēnēi kīwai o te kete.

Together we will share the responsibility.

We have a lot of knowledge, expertise, skills and aspirations. We value this and want to build on this wealth. We are keen to work alongside the Community Board, Councillors and Council staff to build strong and thriving communities. Some of us would like to become community leaders and welcome opportunities to learn about this. We would like to take part in making decisions about local issues.

Our aspirations	Key initiatives	Actions and Community Board role	
Local democracy.	Communication and engagement between the Community Board and communities.	Communicate with communities using different media.	
		Encourage and hear deputations from individuals and community groups and organisations.	
		Attend local network and other meetings regularly.	
		Meet in local communities when significant local issues arise.	
	Increased community governance.		Communicate and promote the role of the Community Board, activities and involvement throughout the community.
			Support activities that promote civic participation.
Increased delegation of decision-making at local level.		Support community input into the Annual and Long Term Plans.	
		Involve local communities in decision-making on issues that affect them.	
		Advocate for increased delegations to Community Boards.	
		Advocate for the Board to have more and earlier involvement in Council processes.	

We want community, community board, and council to work with staff in all processes.

Community conversation, Bays area

We want to decide.

Phillipstown Resident

We must get the city back to local democracy.

Resident, Inner City East

Hagley/Ferrymead Community Board Projects

Communication with the Community

This project is to enhance and support the Community Board's communication with residents, groups and organisations in the Hagley/Ferrymead ward.

Community Recreation for Youth and Older Adults

Community recreation for youth and older adults' events are delivered in collaboration with local community groups, clubs and organisations to promote participation in enjoyable, informative, and affordable recreation and social experiences for individual and community wellbeing.

Community Service Awards

Annual Community Service Awards are given to recognise the contribution of individuals and groups to their local communities. Recognising community efforts in this way fosters community involvement and supports an enhanced sense of community. Certificates of recognition are presented at a special event.

Garden Pride Awards

Annual Garden Pride Awards acknowledge the work of gardeners, who by their efforts contribute to Christchurch's garden city image by beautifying streets and garden frontages. This project is a partnership between the Christchurch City Council and the Christchurch Beautifying Association.

Light Bulb Moments Fund

The purpose of the Hagley/Ferrymead Light Bulb Moments Fund is to provide financial assistance to individuals, groups and organisations in the Hagley/Ferrymead ward who have an idea that can make a difference in their community.

Neighbourhood Week

Neighbourhood Week supports neighbours to get to know each other. It enhances senses of connection to others, belonging in neighbourhoods and safety in communities. Neighbourhood week is supported by all Christchurch City Council Community Boards.

Youth Development Scheme

The purpose of the Youth Development Scheme is to acknowledge young peoples' effort, achievement and potential excellence in the community by providing financial assistance for their development. Applications are considered for personal development and growth opportunities and representation at sporting, cultural and community events.



Nikki 8 years old, Sarah 8 years old, and Danielle 7 years old. Elected members sitting around the Council table. Woolston Development Project Afterschool Programme

Community Funding

In 2015/16 the Council set up the Strengthening Communities Fund and allocated \$5,410,000 for community funding. Of this, the Hagley/Ferrymead ward received:

- \$170,000 through the Metropolitan Strengthening Communities Fund for its Key Local Projects for 2015/16 and the same amount for the same projects for 2016/17;
- \$93,989 through the Metropolitan Strengthening Communities Fund for three early learning centres that work from Council facilities;
- \$240,000 as the Hagley/Ferrymead Strengthening Communities Fund; and
- \$130,000 as the Hagley/Ferrymead Discretionary Response Fund.

The Hagley/Ferrymead Community Board would like to acknowledge the important work that these groups and organisations carry out to build strong communities.

Below is the breakdown of grants given to date:

Metropolitan Strengthening Communities Fund - Key Local Projects - 2015/16

Organisation Name	Project Name	Amount
Anglican Care Community Development	Linwood Youth Development Worker	34,000
Bromley Community Association Inc.	The Bromley Project	26,000
Phillipstown Community Centre Charitable Trust	Community Development Worker	35,000
Te Whare Roimata Trust	Older Persons Project	25,000
Te Whare Roimata Trust	Linwood Community Arts Project	50,000
TOTAL		\$170,000

Metropolitan Strengthening Communities Fund - Early Learning Centres - 2015/16

Organisation Name	Project Name	Amount
Early Learning Centre - Moa Kids Early Childhood Centre	Moa Kids Early Childhood Centre Rent	32,889
Early Learning Centre - New Beginnings Preschool Inc.	New Beginnings Preschool Rent	18,200
Early Learning Centre - Woolston Preschool Inc.	Woolston Preschool Rent	42,900
TOTAL		\$93,989

Hagley/Ferrymead Strengthening Communities Fund - 2015/16

Organisation Name	Project Name	Amount
Anglican Care Community Development	Family Community Development Worker - Men's Projects Linwood	10,000
Anglican Care Community Development	Community Development Worker Linwood	25,000
Avebury House Community Trust	Community Development in Richmond	15,000
Hagley/Ferrymead Community Board - Community Recreation	Community Recreation for Youth and Older Adults	8,500
Heathcote Valley Community Association	Administration Support Position	8,000
Kimihia Adventure Programme Trust	Youth Worker Wages	5,000
Kimihia Early Learning Trust	Employment of social/support worker	10,000
Linfield Cultural Recreational Sports Club Inc.	KiwiSport Coaching	4,500
Linwood Avenue Community Corner Trust	Salaries	5,000
Lyttelton Rugby Club	Rugby development officer wages, Annual Titahi Bay Tour and Rugby Balls	750
Mt Pleasant Memorial Community Centre & Residents' Assoc. Inc.	Part Salary funding for Earthquake Recovery Coordinator	5,000
Otautahi Creative Spaces Project	Otautahi Creative Spaces Project	7,700
Redcliffs Community Shed Trust	Salary for Shed Supervisor	5,000
Redcliffs Public Library Inc.	Operational costs	4,300
Shoreline Youth Trust	Fuse Youth Cafe	15,000
Strengthening Linwood Youth Trust	Linwood College 24-7 Youth Work	15,000
Sumner Bays Union Trust	Community Development worker, administration, and projects	12,000
Sumner Community Pool Inc.	Outdoor Community Pool	5,500
Sumner Community Residents' Association	Community Development coordinator, capacity building the Sumner Hub	12,000
Sumner Surf Life Saving Club	Junior Surf Life Saving Equipment	2,500
Te Mapua Child & Youth Trust	Field Worker Wages	7,500
Te Whare Roimata Trust	Linwood Community Arts Programme	5,000
Te Whare Roimata Trust	Smith Street Community Gardens	23,000
Te Whare Taonga O Nga Iwi Katoa Linwood Resource Centre Trust	Community Garden	5,000
Te Whare Taonga O Nga Iwi Katoa Linwood Resource Centre Trust	Operational Costs	3,000
Woolston Community Association Inc.	Wages and cleaning service	6,000
Woolston Development Project Inc.	Family Support Service	14,750
TOTAL		\$240,000

Organisation Name	Project Name	Amount
Anglican Parish of St Chads Linwood	Catering Equipment	750
Avebury House Community Trust	Richmond Gala at Avebury Park and Avebury House Community Concert	1,500
Avon Loop Planning Association	Community Cottage Administration	1,500
Bromley Community Association Inc.	Volunteer Expenses	400
Bromley Community Association Inc.	Bromley Playgroup	500
Bromley Community Association Inc.	Bromley Community Fair	1,500
Bromley Community Association Inc.	Women's Group	500
Bromley Community Association Inc.	Administration Support	4,000
Bromley Community Association Inc.	Computer Tuition	1,000
Christchurch Estuary Association	Meeting Room Rent	110
DARE Canterbury Inc.	DARE Programme Delivery	3,000
Friends of Edmonds Factory Garden Inc.	Entertainment at Edmonds	1,000
Hagley/Ferrymead Community Board	Communication with the Community Project	6,000
Hagley/Ferrymead Community Board	Garden Pride Awards	1,200
Hagley/Ferrymead Community Board	Community Service Awards	2,000
Hagley/Ferrymead Community Board	Neighbourhood Week	3,500
Hagley/Ferrymead Community Board	Light Bulb Moments Fund	5,000
Hagley/Ferrymead Community Board	Youth Development Fund	10,000
Heathcote-Mt Pleasant Anglican Parish	Community Luncheon Programme	500
K2 Youth Development Trust	Kiwi Can Programme	4,000
Kidsfirst Kindergarten Linwood	Trips and Cultural experiences	1,000
Kimihia Adventure Programme Trust	Youth Camp	1,000
Linwood Avenue Community Corner Trust	Volunteer expenses and recognition	700
Linwood Avenue Community Corner Trust	Community Lunch Equipment	750
Linwood Avenue Community Corner Trust	Special Events	850
Linwood Avenue Community Corner Trust	Craft Group	300
Mount Pleasant Pottery Group Inc.	Holiday Program	1,200
Mt Pleasant Memorial Community Centre & Residents' Assoc. Inc.	Disabled Portaloo hire for Temporary Community Centre	2,572
Mt Pleasant Memorial Community Centre & Residents' Assoc. Inc.	Portaloo hire	600
Phillipstown Community Centre Charitable Trust	Phillipstown Festivals	2,500
Redcliffs Tennis Club	Equipment and outside lighting	2,500
Richmond Keas Softball Inc.	Player and Coach Support - Softball Resources	1,500
Shoreline Youth Trust	Big Night Out	500
Shoreline Youth Trust	Combined Youth Activities for Van Asch Deaf Education	1,500

Organisation Name	Project Name	Amount
Sumner Senior Citizens Club	Sumner Senior Citizens' Club	500
Te Mapua Child & Youth Trust	Warriors After School programme	1,500
Te Mapua Child & Youth Trust	Mana Mentoring Programme	2,000
Te Whare Roimata Trust	Gold Coin Cafe	3,200
Te Whare Taonga O Nga Iwi Katoa Linwood Resource Centre Trust	Volunteer costs and recognition	700
Te Whare Taonga O Nga Iwi Katoa Linwood Resource Centre Trust	Community Programmes	1,000
Te Whare Taonga O Nga Iwi Katoa Linwood Resource Centre Trust	Linwood Men's Shed	1,800
Woolston Boxing Club Inc.	Volunteer recognition, administration and equipment	1,200
Woolston Community Association Inc.	Woolston Gala	1,000
Woolston Community Association Inc.	Programme Expenses	750
Woolston Development Project Inc.	Afterschool and Holiday Programme Resources	750
Woolston Development Project Inc.	Family Events	850
Woolston Development Project Inc.	Volunteer expenses	3,500
Woolston Development Project Inc.	Women's Support/Recreation Group	1,000
Youthtown Christchurch	Linwood Youth Festival Experience (LYFE)	15,000
TOTAL		\$100,182

Hagley/Ferrymead Planned Capital Programmes: 2015/16 - 2017/18

This is a list of all planning capital programmes for the Hagley/Ferrymead ward. Please note that there are other developments and projects planned for the ward not listed individually.

Portfolio Group	Group of Activities	Activity	Category	ID	Description	Plan 2015/16	Plan 2016/17	(\$000) Plan 2017/18
Day-to-Day								
	Resilient Communities							
		Civil Defence Emergency Management	Committed	448	Chch Justice & Emergency Services Precinct (including an Emergency Operations Centre)	260	426	0
	Resilient Communities Total					260	426	0
	Stormwater Drainage							
		Stormwater Drainage	Core	488	Charlesworth Wetland and Drain	21	0	0
				8603	Drayton Reserve Gulley Planting	33	0	0
	Stormwater Drainage Total					54	0	0
	Transport							
		Active Travel	Increased Levels of Service					
				1972	Major Cycleway: Opawaho River Route (Heathcote River Trail)	50	768	787
				1980	Major Cycleway: Rapanui-Shag Rock Cycleway (Sumner to City)	2,403	6,390	7,704
				1987	Major Cycleway: Heathcote Expressway (Heathcote Rail Route to City)	678	1,361	4,771
				9146	Coastal Pathway Project	1,537	3,270	3,677
	Transport Total					4,668	11,789	16,939
	Water Supply							
		Water Supply	Growth	142	WS St Johns New Well	254	0	0
	Water Supply Total					254	0	0
	Parks and Open Spaces							
		Cemeteries	Core	2225	Ruru Lawn Cemetery Footpaths Renewal	0	0	114
				2230	Ruru Cemetery Beam Renewals	52	53	341
		Garden & Heritage Parks	Core	1433	Botanic Gardens Tree Renewals	35	36	36
				2301	Botanic Gardens Playground Renewal	0	22	28
				3182	Botanic Gardens Irrigation Renewal	54	56	57
				3199	Hagley Park Tree Renewal Programme	88	90	92

		3200	Hagley Park Green Assets Renewal	22	22	23
		18098	Linwood nursery clearance and land reinstatement	0	41	398
			Increased Levels of Service			
	Neighbourhood Parks	21128	Botanic Gardens uplighting	260	266	273
			Core			
		506	Brownlee Reserve Renewals	204	0	0
		1386	Scarborough Park Playground Renewal	0	15	157
			Parks and Open Spaces Total	715	601	1,519
			Roads and Footpaths			
	Road Network		Committed			
		236	Main Rd (3 Laning)	196	0	0
		3291	Replacement and Improvements to Ferrymead Bridge	2,039	0	0
			Core			
		933	Central City Historic Bridges	86	88	90
			Growth			
		17402	Intersection Improvements: Curries/ Tanner	208	319	0
			Increased Levels of Service			
		916	Network Management Improvements: Ferry & Moorhouse Road Widening (Aldwins to Fitzgerald)	42	360	742
		1970	Suburban Masterplan: Ferry Road (Transport Activities)	1,638	777	1,809
		1971	Suburban Masterplan: Sumner Streets & Lanes (Transport Activities)	1,444	2,500	3,108
		1973	Suburban Masterplan: Linwood (Transport Activities)	423	434	76
		17103	Intersection Safety: Aldwins/ Buckleys/ Linwood (13)	0	0	27
		17104	Intersection Safety: Aldwins/ Ensors/ Ferry	526	2,598	1,174
		17114	Intersection Safety: Bealey/ Madras (6)	0	27	273
		17117	Intersection Safety: Bealey/ Papanui/ Victoria (14)	0	0	27
		17120	Intersection Safety: Cashel/ Fitzgerald (2)	26	266	763
		17136	Intersection Safety: Gasson/ Madras/ Moorhouse (1)	286	745	0
		17147	Intersection Safety: Manchester/ Moorhouse/ Pilgrim (5)	26	266	763
		17279	Truscotts Road Footpath	70	0	0
		17880	Intersection Improvements: Deans / Moorhouse	0	266	273
			New Services			
		275	Tram Base + Tram Overhead	423	0	0
		19137	Suburban Masterplan: Main Road (Transport Activities)	500	1,627	0
			Roads and Footpaths Total	7,933	10,273	9,125
			Sewage Collection, Treatment and Disposal			
	Wastewater Collection		Committed			
		2300	PM15 Relocation for EQ Resilience	609	0	0
		16279	Ferrymead Lifelines Biofilter	117	0	0

Wastewater Treatment & Disposal		Core						
	37	LW Laboratory Renewals and Replacements	52	47	48			
	114	Grit Tank Upgrade for EQ Resilience	2,389	844	0			
	115	WW CWTP Electrical Instrumentation and Control Renewals	715	624	639			
	117	WW CWTP Ongoing Renewals Programme	1,092	1,117	1,145			
	2310	Digesters 1-4 Covers Renewal	0	0	0			
	2313	Biogas Boilers Renewal	487	0	0			
	2316	Trade Waste Reception Facility Renewal and EQ Resilience	3,176	0	0			
	3117	Biosolids Dewatering Renewal	73	2,085	0			
	17712	CWTP Primary Tanks Butterfly Valves & Handrails	107	0	0			
	19250	CWTP Trickling Filter Main Bearing Renewal	197	0	0			
	19259	CWTP Thermophylic Digesters Renewals	24	0	0			
	19260	CWTP Operations Building HVAC - Renewal	279	0	0			
Sewage Collection, Treatment and Disposal Total			9,317	4,717	1,832			
Arts and Culture								
Art Gallery and Museums		Core						
	2	CSAG Art in Public Places	808	230	236			
	550	CSAG FA NA Collections Acquisitions	312	319	327			
	2097	CSAG Art Gallery Replacements and renewals	1,973	947	215			
	2107	CSAG R&R Exhibition equipment	27	28	28			
	2112	CSAG Design and photography equipment	28	0	7			
	2113	CSAG R&R Security upgrade	489	32	33			
	2398	CSAG Art Gallery Collection storage and fittings	22	22	23			
Arts and Culture Total			3,659	1,578	869			
Regulation and Enforcement								
Licencing and Enforcement		Core						
	2082	Animal Facilities Upgrade	415	0	0			
Regulation and Enforcement Total			415	0	0			
Sports and Recreation								
Recreation and Sports Services		New Services						
	21129	Woolston/Linwood Pool	0	6,138	9,752			
Sports Parks		Core						
	2314	Hagley Park Hard Surface Renewals	33	33	34			
	8394	Artificial Cricket Wicket Renewals	31	32	33			
		Growth						
	335	Ferrymead Park Development	16	106	109			
Sports and Recreation Total			80	6,309	9,928			

Flood Protection and Control Works								
Stormwater Drainage	Legal							
		19398	Heathcote, Estuary and Coast SMP		0	532	545	
Flood Protection and Control Works Total					0	532	545	
Day-to-Day Total					27,355	36,225	40,757	
Facility Rebuilds								
Corporate								
Corporate Investments	Committed							
		1024	Town Hall Rebuild		40,680	37,362	40,709	
Corporate Support	Committed							
		10370	Performing Arts Precinct		1,545	17,186	10,904	
Corporate Total					42,225	54,548	51,613	
Housing								
Social Housing	Core							
		19441	HP Smith Courts - Social Housing Infill Development		503	0	0	
		22568	Osborne Street - Social Housing Infill Development		1,925	0	0	
Housing Total					2,428	0	0	
Resilient Communities								
Community Facilities	Core							
		9381	Sumner Community Facility (Centre & Library) Rebuild		2,200	8,288	0	
		14505	Heathcote Combined Community Facility		660	0	0	
Resilient Communities Total					2,860	8,288	0	
Transport								
Parking	Committed							
		1021	Lichfield Car Parking Rebuild Capex		8,762	0	0	
		1022	Parking "Replacement" Capex		22,745	6,772	0	
		16888	Crossing Carpark		27,795	0	0	
Transport Total					59,302	6,772	0	
Parks and Open Spaces								
Parks & Open Spaces	Core							
		15748	Sumner Surf Club Toilets Rebuild		214	0	0	
		18741	Botanic Gardens Tea Kiosk - Strengthening & Repair Project		172	0	0	
Parks and Open Spaces Total					386	0	0	
Roads and Footpaths								
Road Network	Increased Levels of Service							
		1969	AAC Central City: Wayfinding		2,391	0	0	
		10371	Transport Plan		644	0	0	
		14294	TP6 Fitzgerald Avenue Twin Bridges Renewal		6,570	0	0	

	14295	TP9 Tuam Street One way Conversion (Durham to St Asaph)	4,132	0	0
	14297	TP10 Lichfield Street 2 way conversion	3,075	0	0
	15170	TP3ok AAC Slow Core	2,500	0	0
	18324	AAC Victoria Street	843	6,384	0
	18325	AAC Salisbury Street	0	664	5,780
	18360	AAC Riccarton Avenue	500	0	0
	21119	AAC Kilmore Street (Fitzgerald-Park) two way conversion	0	0	7,048
	24778	AAC St Asaph Street (Ferry-Antigua)	3,500	0	0
Roads and Footpaths Total			24,155	7,048	12,828
Arts and Culture					
Libraries	Core				
	1020	Central Library Rebuild (New Central Library)	20,496	45,012	14,619
Arts and Culture Total			20,496	45,012	14,619
Sports and Recreation					
Recreation and Sports Services	Core				
	1017	Central City Metro Sport Facility	520	36,214	37,120
Sports and Recreation Total			520	36,214	37,120
Heritage Protection and Policy					
Heritage Protection	Core				
	3378	Rose Historic Chapel	966	967	0
	22167	Canterbury Provincial Chambers Protective Structures	2,200	9,279	17,449
Heritage Protection and Policy Total			3,166	10,246	17,449
Facility Rebuilds Total			155,538	168,128	133,629
Infrastructure Rebuild					
Parks and Open Spaces					
Parks & Open Spaces	Core				
	14085	Godley Statue EQ Repair	20	0	0
Parks and Open Spaces Total			20	0	0
Roads and Footpaths					
Road Network	Core				
	8863	Sumner Road Zone 3A Risk Mitigation	5,220	0	0
	9980	Shag Rock Reserve - Clifton Hill - Risk Mitigation	5,370	131	0
	10309	Wakefield Avenue Risk Mitigation	3,017	272	0
	10310	Moa Bone - Domain 1 and 2 - Risk Mitigation	916	0	0
	14700	Zone 3B Risk Mitigation	30,430	21,902	2,053
	14702	Shag Rock Reserve - Deans Head - Risk Mitigation	5,825	3,155	0
Roads and Footpaths Total			50,778	25,460	2,053
Sewage Collection, Treatment and Disposal					

	Wastewater Treatment & Disposal	Core						
			590	WP0000128 - CWTP Civil & Structural Repairs	50	0	0	
			593	WP0000131 - CWTP Trickling Filter Repairs	1,027	0	0	
			594	WP0000132 - CWTP Mechanical & General Repairs	1,801	0	0	
			2717	CWTP EQ Repair Occupied Buildings	2,500	2,600	696	
	Sewage Collection, Treatment and Disposal Total				5,378	2,600	696	
	Refuse Minimisation and Disposal							
	Residual Waste							
	Collection and Disposal	Core						
			3142	Eq Damage Assessment & Repair Metro Transfer Station	1,302	0	0	
	Refuse Minimisation and Disposal Total				1,302	0	0	
	Infrastructure Rebuild Total				57,478	28,060	2,749	
	Total				240,371	232,413	177,135	

For more information contact:

Community Governance Team, Hagley/Ferrymead Ward

Community Support, Governance and Partnerships

Customer and Community Group

P O Box 73052, Christchurch, 8154

Telephone: 9418999 Email: Hagley.Ferrymead@ccc.govt.nz

Or visit our website: www.ccc.govt.nz