



memorandum

TO Christchurch City Council FROM [REDACTED]

DATE 22 July 2024

RE Living Earth Odour Monitoring: 30th May 2024 to 30th June 2024 Summary

1.0 Background

Living Earth Limited (Living Earth) operates an organics processing plant and composting facility located at 40 Metro Place, Bromley, Christchurch (the LE Site). Living Earth's air discharges are subject to the conditions attached to air discharge consent CRC080301.1 ("the consent") from Canterbury Regional Council (CRC) to discharge contaminants (odour and dust) to air.

Specifically, Condition 27 of the consent states that:

"The discharges to air shall not cause odour or dust which is offensive or objectionable beyond the boundary of the site on which this consent is exercised."

While Living Earth operates the composting facility, Christchurch City Council (CCC) holds the consent.

Pattle Delamore Partners Limited (PDP) has been providing assistance to CCC and Living Earth regarding the assessment and management of odour effects from the site. This has included regular odour scouting. The objectives of the odour scouting are to:

- ∴ Correlate the intensity and characters of observed odour (where possible) to:
 - Odour sources in the Bromley area.
 - Specific activities and/or sources on the LE Site.
 - Meteorological conditions.
 - Time of day.
- ∴ Undertake FIDOL assessments to determine if offensive or objectionable odours are present beyond the site boundary.
- ∴ Corroborate the content of community (i.e., Smelt-It) complaints.

This letter provides a summary of PDP's observations of off-site odour scouting for the period between the 30th May 2024 and 30th June 2024. The stockpiles of the outdoor material, namely the unscreened compost, oversize stockpiles and screened fines have been cleared from the site since the 12th of January 2024.

2.0 Summary of Methodology

Odour observations are made by PDP odour scouts. To ensure consistency between scouts, PDP ensures the following:

1. Scouts periodically undertake parallel odour assessments with each other in the field.
2. Scouts periodically visit the LE Site and familiarise themselves with the character of the odour from the various onsite sources.
3. Scouts undergo nose calibration via direct dilution olfactometry according to the requirements of AS/NZS 4323.3:2001 Section 9.7.2.

During an assessment, scouts walk at a comfortable pace through the area downwind of the LE Site, making note of odours detected. PDP has defined a series of observation points in the area where the scout makes more detailed observations, shown in **Figure 1**. The exact route and observation points visited in an assessment depend on the meteorological conditions (wind speed and direction) and the odour (if any) detected by the scout on the route.

Sites H and M are immediately downwind of the site, located along Dyers Road with sites G and F. Sites I, J, K, and N are located in the heavy industrial zone. Sites A, C, B, D, P, and R are located in the residential zone around Bayswater Reserve. Sites E, L, O, and Q are located roughly along the residential-industrial boundary. In assessments, Sites E, O, D and Q are in the residential zone, while Site L is in the general industrial zone.



Figure 1: Odour Observation Locations

In key areas where odour is detected, or at known sensitive areas, a full 10-minute odour observation is taken. Where 10-minute observations are taken at a site, a FIDOL assessment is completed by the scout and a determination made as to whether the odour is offensive or objectionable.

Determinations made are necessarily the opinion of the odour scout at that time to the conditions they encounter. They are based upon observations in the field but may also include consideration of wider factors such as meteorological conditions and patterns of site activity when considering the potential for offensive or objectionable odour over longer time periods.

Each scout makes their determination with reference to other determinations made, both within PDP, and more widely amongst the air quality profession.

Summaries for each odour scout are included in Section 3.0. Detailed analysis of specific observations is included, where necessary. Results of all 10-minute odour observations, summarised by observation location, are appended to this memorandum.

This memorandum presents the results of the odour scouting undertaken. This report does not analyse odour trends across time.

2.1 FIDOL Analysis

As per Ministry for the Environment's Good Practice Guide for Assessing and Managing Odour (MfE GPG), odours were assessed against the FIDOL factors to determine if they were offensive or objectionable. The FIDOL factors are:

- ∴ Frequency;
- ∴ Intensity;
- ∴ Duration;
- ∴ Offensiveness/Character¹; and
- ∴ Location.

Odour intensity is reported on a scale of (0-6) as per the MfE's GPG Odour. PDP applies the following descriptions to each odour intensity to ensure consistency between scouts:

0. No Odour: No odour.
1. Very Weak: Odour detectable but character not recognisable.
2. Weak: Odour detectable and barely recognisable.
3. Distinct: Odour readily recognisable.
4. Strong: Odour is strong but not causing discomfort to assessor.
5. Very Strong: The odour causes some discomfort; assessor can remain in area but will consider leaving/altering breathing patterns.
6. Extremely Strong: The odour causes assessor to feel nauseous or compelled to leave the area.

¹ "It is preferable to refer to the character of an odour, rather than its 'offensiveness' to avoid confusion between the inherent characteristics of an odour (i.e., whether it is pleasant or unpleasant) and whether there is an 'objectionable or offensive' effect occurring as a result of exposure to odour." (MfE GPG Odour)

When determining whether odour is having an offensive or objectionable effect, odour scouts make their determination with respect to the FIDOL factors. No regulatory standard exists for the specific combination of FIDOL factors that do or do not constitute an offensive or objectionable odour. However, as a broad litmus test when making determinations at the Living Earth site, PDP scouts consider intermittently distinct (3) or continuous weak (2) odours of a negative hedonic tone (such as compost) to be offensive or objectionable in a residential zone.

Within a heavy industrial zone, there is a lower expectation of amenity as it pertains to odour.

Based on PDP's understanding, this approach is generally consistent with that used by other air quality professionals.

3.0 Results Summary

Result summaries for each odour scout are reported below. Results of all 10-minute odour observations, summarised by observation location, are appended to this memorandum.

Scouts were present in the Bromley area on the:

- ∴ 30th May 2024;
- ∴ 31st May 2024;
- ∴ 5th June 2024;
- ∴ 12th June 2024;
- ∴ 13th June 2024; and
- ∴ 21st June 2024.

3.1 30th May 2024

██████████ was the PDP odour scout. The scout was present for approximately 1 hour. The weather was overcast, with an average temperature of 11°C, and north-north-easterly to north-north-westerly winds ranging from 0.4 to 1.8 m/s as a 10-minute average. The scout started and ended near Site O, walking the boundary of the industrial area towards Site M and returning to Site O. The objective was to undertake odour monitoring in the area downwind of the LE Site. The odour scout route (yellow dots) and key scouting locations are shown in **Figure 2**.



Figure 2: 30th May 2024 - Odour Scout Route

Results from the odour scout are shown below. Entries within **Table 1** that are highlighted blue denote locations within a residential zone and purple denotes locations within an industrial zone.

Table 1: 30th May 2024 - Odour Scouting Summary

Site	Time	Observations
O	13:17	No odour (0) detected.
D	13:22	No odour (0) detected.
E	13:25	FIDOL assessment completed. No odour (0) was detected 73% of the time. Very weak (1) odours of an indeterminate character were detected 27% of the time. The odour was assessed to be neither offensive nor objectionable.
F	13:38	No odour (0) detected.
G	13:42	No odour (0) detected.
H	13:44	No odour (0) detected.
M	13:45	No odour (0) detected.
H	13:46	No odour (0) detected.
G	13:49	No odour (0) detected.
F	13:51	No odour (0) detected.
E	13:54	No odour (0) detected.
D	13:57	No odour (0) detected.
O	13:59	No odour (0) detected.

No compost odour was detected in the residential or industrial areas.

3.2 31st May 2024

██████████ was the PDP odour scout. The scout was present for approximately 40 minutes. The weather was overcast, with an average temperature of 14°C, and east-southeasterly winds ranging from 3.2 to 4.4 m/s as a 10-minute average. The scout started and ended near Site O, walking the boundary of the industrial area towards the LE site and returning to Site O. The objective was to undertake odour monitoring in the area downwind of the LE Site. The odour scout route (yellow dots) and key scouting locations are shown in **Figure 3**.



Figure 3: 31st May 2024 - Odour Scout Route

Results from the odour scout are shown below. Entries within **Table 2** that are highlighted blue denote locations within a residential zone and purple denotes locations within an industrial zone.

Table 2: 31st May 2024 - Odour Scouting Summary

Site	Time	Observations
O	15:17	No odour (0) detected.
D	15:19	No odour (0) detected.
E	15:22	No odour (0) detected.
F	15:25	Very weak (1) odours of an indeterminate character detected.
G	15:27	No odour (0) detected.
H	15:29	No odour (0) detected.

Table 2: 31st May 2024 - Odour Scouting Summary

Site	Time	Observations
G	15:32	No odour (0) detected.
F	15:34	Very weak (1) odours of an indeterminate character detected.
E	15:37	No odour (0) detected.
D	15:41	No odour (0) detected.
O	15:43	No odour (0) detected.

No compost odour was detected in the residential or industrial areas. Although north-easterly winds were forecast prior to the scout arriving, when the scout arrived the wind direction was east-southeasterly. As a result, the scout was not downwind of the LE site.

3.3 5th June 2024

██████████ was the PDP odour scout. The scout was present for approximately 30 minutes. The weather was overcast, with an average temperature of 12°C, and easterly winds ranging from 5.2 to 5.6 m/s as a 10-minute average. The scout started and ended near Site O, walking the boundary of the industrial area towards Site M and returning to Site O. The objective was to undertake odour monitoring in the area downwind of the LE Site. The odour scout route (yellow dots) and key scouting locations are shown in **Figure 4**.



Figure 4: 5th June 2024 - Odour Scout Route

Results from the odour scout are shown below. Entries within **Table 3** that are highlighted blue denote locations within a residential zone and purple denotes locations within an industrial zone.

Table 3: 5th June 2024 - Odour Scouting Summary

Site	Time	Observations
O	12:46	No odour (0) detected.
D	12:48	No odour (0) detected.
E	12:51	No odour (0) detected.
F	12:54	Intermittent very weak (1) odours of an indeterminate character detected.
G	12:56	No odour (0) detected.
H	12:58	No odour (0) detected.

Table 3: 5th June 2024 - Odour Scouting Summary

Site	Time	Observations
H to M		No odour (0) to intermittent weak (2) green waste odour detected.
M	13:01	No odour (0) detected.
M to H		No odour (0) to intermittent weak (2) green waste odour detected.
H	13:04	No odour (0) detected.
G	13:06	No odour (0) detected.
F	13:08	No odour (0) detected.
E	13:11	No odour (0) detected.
D	13:14	No odour (0) detected.
O	13:17	No odour (0) detected.

No compost odour was detected in the residential or industrial areas.

3.4 12th June 2024

██████ was the PDP odour scout. The scout was present for approximately 1 hour. The weather was fine, with an average temperature of 9°C, and east-northeasterly winds ranging from 5.6 to 6.6 m/s as a 10-minute average. The scout started and ended near Site O, walking the boundary of the industrial area towards Site M and returning to Site O. The objective was to undertake odour monitoring in the area downwind of the LE Site. The odour scout route (yellow dots) and key scouting locations are shown in **Figure 5**.

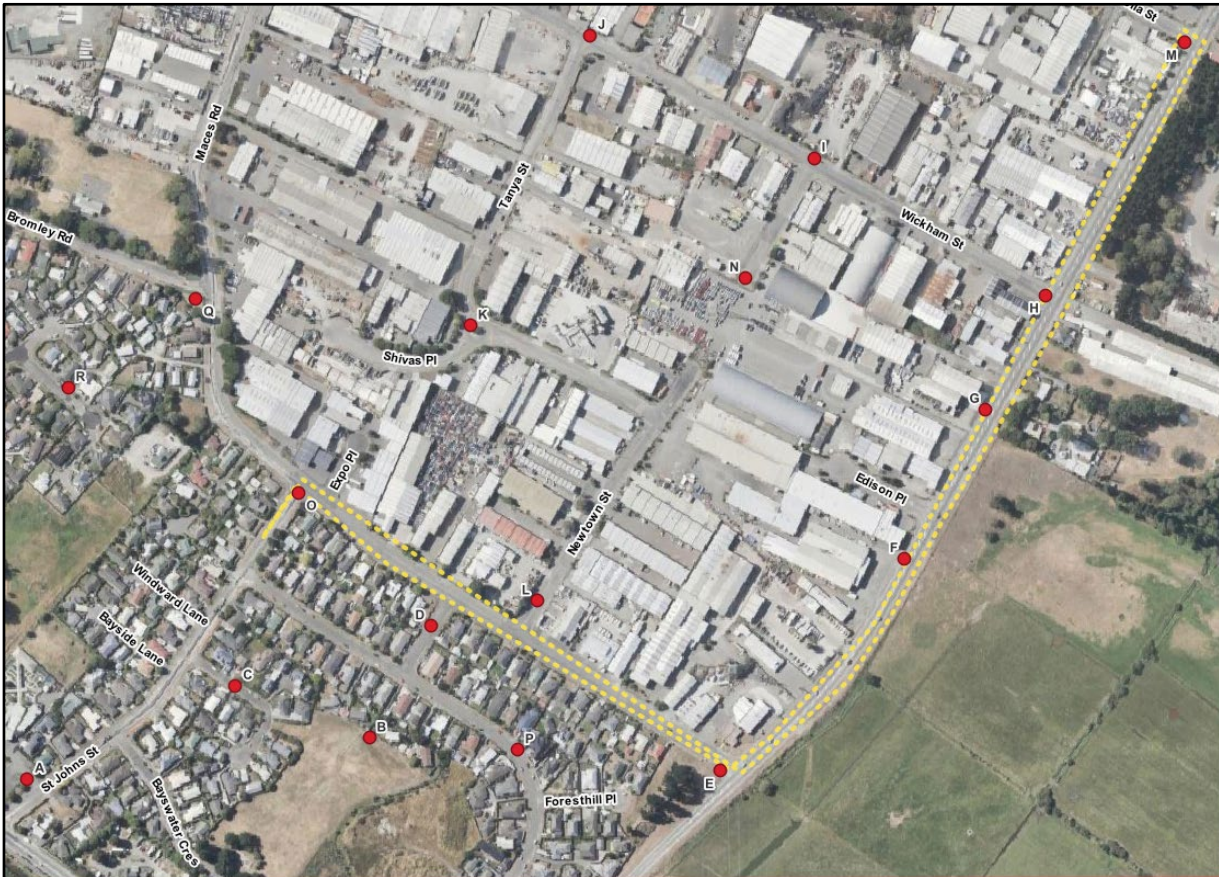


Figure 5: 12th June 2024 - Odour Scout Route

Results from the odour scout are shown below. Entries within **Table 4** that are highlighted blue denote locations within a residential zone and purple denotes locations within an industrial zone.

Table 4: 12 th June 2024 - Odour Scouting Summary		
Site	Time	Observations
O	15:30	No odour (0) detected.
D	15:53	No odour (0) detected.
E	15:56	No odour (0) detected.
F	15:56	No odour (0) detected.
G	16:01	No odour (0) detected.
G to H		Intermittent weak (2) green waste odour detected.

Table 4: 12th June 2024 - Odour Scouting Summary

Site	Time	Observations
H	16:03	No odour (0) detected.
H to M		Weak (2) rubbish odour detected.
M	16:06	No odour (0) detected.
H to M		Weak (2) rubbish odour detected.
H	16:10	No odour (0) detected.
G	16:12	Very weak (1) odours of an indeterminate character detected.
F	16:15	No odour (0) detected.
E	16:18	No odour (0) detected.
D	16:20	No odour (0) detected.
O	16:22	No odour (0) detected.

No compost odour was detected in the residential or industrial areas.

3.5 13th June 2024

██████████ was the PDP odour scout. The scout was present for approximately 20 minutes. The weather was overcast, with an average temperature of 10°C, and northeasterly to east-northeasterly winds ranging from 3.3 to 6.0 m/s as a 10-minute average. The scout started and ended near Site D, walking the boundary of the industrial area towards the LE site and returning to Site D. The objective was to undertake odour monitoring in the area downwind of the LE Site. The odour scout route (yellow dots) and key scouting locations are shown in **Figure 6**.



Figure 6: 13th June 2024 - Odour Scout Route

Results from the odour scout are shown below. Entries within **Table 5** that are highlighted blue denote locations within a residential zone and purple denotes locations within an industrial zone.

Table 5: 13 th June 2024 - Odour Scouting Summary		
Site	Time	Observations
D	10:24	No odour (0) detected.
E	10:27	No odour (0) detected.
F	10:30	No odour (0) detected.
G	10:32	No odour (0) to intermittent very weak odours of an indeterminate character detected.
H	10:34	No odour (0) detected.

Table 5: 13th June 2024 - Odour Scouting Summary

Site	Time	Observations
G	10:36	No odour (0) detected.
F	10:38	No odour (0) detected.
E	10:42	No odour (0) detected.
F	10:45	No odour (0) detected.

No compost odour was detected in the residential or industrial areas.

3.6 21st June 2024

██████████ was the PDP odour scout. The scout was present for approximately 30 minutes. The weather was fine, with an average temperature of 10°C, and northeasterly to east-northeasterly winds ranging from 4.3 to 5.0 m/s as a 10-minute average. The scout started and ended near Site C, walking through the residential area, before walking the boundary of industrial area towards Site M and returning to Site C. The objective was to undertake odour monitoring in the area downwind of the LE Site. The odour scout route (yellow dots) and key scouting locations are shown in **Figure 7**.



Figure 7: 21st June 2024 - Odour Scout Route

Results from the odour scout are shown below. Entries within **Table 6** that are highlighted blue denote locations within a residential zone and purple denotes locations within an industrial zone.

Table 6: 21st June 2024 - Odour Scouting Summary

Site	Time	Observations
C	9:05	No odour (0) detected.
B	9:07	No odour (0) detected.
D	9:08	No odour (0) detected.
E	9:11	No odour (0) detected.
F	9:14	No odour (0) detected.
G	9:17	No odour (0) detected.

Table 6: 21st June 2024 - Odour Scouting Summary

Site	Time	Observations
H	9:18	No odour (0) detected.
G	9:19	No odour (0) detected.
F	9:22	No odour (0) detected.
E	9:25	No odour (0) detected.
D	9:28	No odour (0) detected.
O	9:30	No odour (0) detected.

No compost odour was detected in the residential or industrial areas.

4.0 Summary

PDP undertook odour scouting on six occasions between the 30th of May 2024 and the 30th of June 2024.

Typically, PDP considers that intermittent distinct (3) or continuous weak (2) odours of a negative hedonic tone (such as compost) are offensive or objectionable in a residential zone.

Based on PDP's observations:

30th May 2024

- ∴ No compost odour was detected in the residential or industrial areas.

31st May 2024

- ∴ No compost odour was detected in the residential or industrial areas.

5th June 2024

- ∴ No compost odour was detected in the residential or industrial areas.

12th June 2024

- ∴ No compost odour was detected in the residential or industrial areas.

13th June 2024

- ∴ No compost odour was detected in the residential or industrial areas.

21st June 2024

- ∴ No compost odour was detected in the residential or industrial areas.

The scouting over June did not identify compost odour beyond the boundary of the site. The green waste odour, associated with the fresh green waste pile on the site, was occasionally detected offsite.

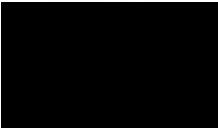
5.0 Limitations

This memorandum has been prepared by Pattle Delamore Partners Limited (PDP) on the basis of information provided by Christchurch City Council and Living Earth. PDP has not independently verified the provided information and has relied upon it being accurate and sufficient for use by PDP in preparing the memorandum. PDP accepts no responsibility for errors or omissions in, or the currency or sufficiency of, the provided information.

This memorandum has been prepared by PDP on the specific instructions of Christchurch City Council for the limited purposes described in the memorandum. PDP accepts no liability if the memorandum is used for a different purpose or if it is used or relied on by any other person. Any such use or reliance will be solely at their own risk.

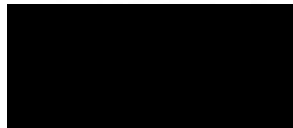
© 2024 Pattle Delamore Partners Limited

Prepared by



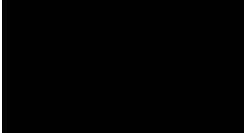
Air Quality Engineer

Prepared by



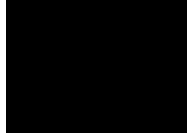
Air Quality Scientist

Reviewed by



Service Leader - Air Quality

Approved by



Group Director

Site E

