

Bees



Bumblebee

- Fat and furry
- Yellow and black stripes
- 10–25 mm



Honeybee

- Golden/yellow
- Dark bands across body
- 12 mm



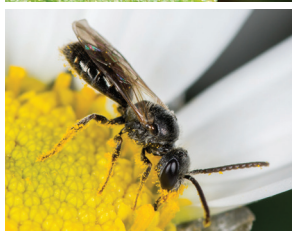
Wool carder bee

- Wide body with a mostly black centre and bright yellow markings
- 8–13 mm



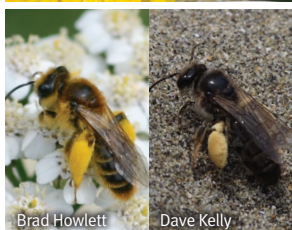
Hylaeus species (Native)

- Slender body shape with few hairs
- White or yellow mask on face
- 7–9 mm



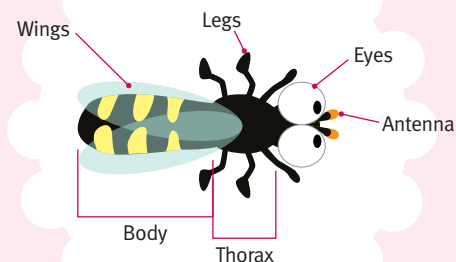
Lasioglossum species (Native)

- Very small native bee
- Black/brown colouring
- Slender with narrow waist
- 5–6 mm



Leioproctus species (Native)

- Larger, hairier and more robust than lasioglossum
- 6–8 mm



Get involved

Help us understand pollinators across Christchurch so we can create stronger ecosystems.

- 1 Grab a data sheet, pen and camera if you have one (you can print off one of our handy tally sheets online).
- 2 Pick a dry day with low wind and record the date, time and weather conditions.
- 3 Pick a plant that is flowering and record its characteristics: type, flower colour and flower size. If you're unsure, take a photo.
- 4 Spend ten minutes watching your chosen plant.
TIP: If your plant is too big to watch all at once, pick a small section of flowers to monitor rather than the whole plant.
- 5 In that time, record how many of each kind of pollinator species visit the plant. If you're unsure of any species – take a photo!
- 6 Do this a minimum of three times between October 1 and December 31, 2018.
- 7 For more information, or to submit your data and any photos via the online survey, visit:

ccc.govt.nz/backyardbuzz

Backyard Buzz Project

What's the buzz in your backyard?
Help us find out!

Instructions
and ID Guide

Flies



Bronze thorax fly

- Wiry bronze hairs on thorax
- Brown/red eyes and dark body
- 10–15 mm



Green and blue bottle flies

- Typical fly shape
- Either metallic green or blue body
- 10–14 mm



Narcissus bulb fly

- Similar to bumblebee in colour
- Typical fly features – two wings, big eyes, tiny antennae above mouth
- 12 mm



Morning evening fly

- Typical fly shape with grey/brown hairy body
- Red/brown eyes
- 4–7 mm



Green soldier fly (Native)

- Brown thorax and dark pattern on back
- Bright green sides and underside



March fly (Native)

- Small long dark head
- Long body (8mm)
- Males are all black and females have a red thorax

Hoverflies



Black hoverfly (Native)

- Long, slim, black body with narrow light bands that don't always meet in the middle
- 7–10 mm



Drone fly

- Similar to a honey bee but with large eyes that meet in the centre of the head
- A dark 'H' pattern is visible on the body
- 14–18mm



Orange hoverfly (Native)

- Similar to a black hoverfly but smaller
- Has an orange and brown chequered pattern on body
- approx. 5mm



Tiger hoverfly

- Distinctive black and yellow stripes on thorax
- Dark H pattern on yellow body
- 8–11 mm



Blue hoverfly (Native)

- Metallic blue
- Gold/yellow section at base of thorax



Three lined hoverfly (Native)

- Distinctive black and yellow stripes on thorax
- Two yellow bands on black body
- 15 mm

Other



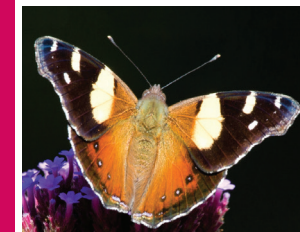
Monarch butterfly

- Large butterfly
- Bright orange wings with black and white pattern
- 90–120 mm



Flower longhorns (Native)

- Blue or red in colour
- Two yellow/orange spots on body
- 5–8 mm



Yellow admiral butterfly (Native)

- Top wings have yellow bands, white patches and dark edges
- Bottom wings are dull red with small dark circles
- 50–60 mm



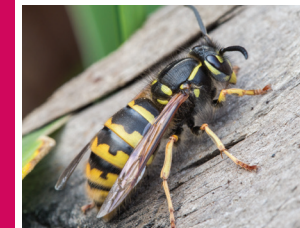
Red admiral butterfly (Native)

- Mostly dark wings with red bands
- Top wings have white pattern toward edges
- 50–60 mm



White cabbage butterfly

- White wings with black dots
- Dark outer edges on wings
- 45–50 mm



Wasp

- Similar in shape to honeybee
- Bright yellow and black patterns on face and body
- 12–77 mm