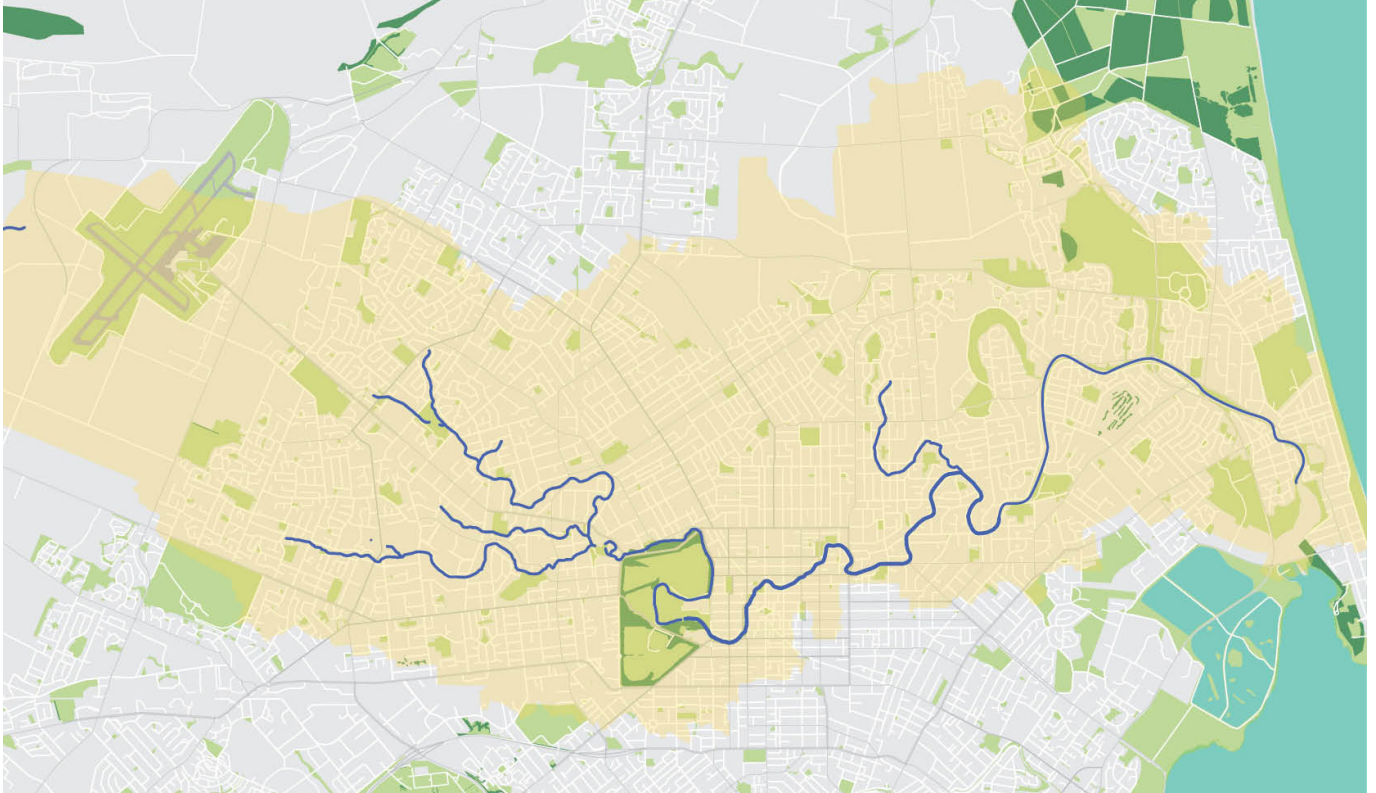


Waterway Health Report Card 2023

Ōtākaro-Avon River catchment

Christchurch city has more than 200 kilometres of waterways within five main river catchments – Ōtākaro-Avon, Ōtūkaikino, Pūharakekenui-Styx, Ōpāwaho-Heathcote and Huritini-Halswell. We assess the health of each catchment, testing water and sediment quality and monitoring habitat, plants, insects, fish and periphyton such as algae.

**Source**

Avonhead

Report score

D

Elevation3-5 metres above
sea level**Land use**Urban (residential
and commercial)**Mouth**Ihutai-
Avon-Heathcote Estuary**Length**

29 kilometres



Assessing waterway health

We measure the health of each waterway using a Water Quality Index (WQI), a Sediment Quality Index (SQI) and the Quantitative Macroinvertebrate Community Index (QMCI).

See more at ccc.govt.nz/environment/water/waterways/waterway-monitoring

Water Quality Index (WQI) Score

We use a WQI specific to Christchurch waterways. Each monitoring site is scored against guideline levels for copper, zinc, pH, suspended solids, dissolved oxygen, temperature, ammonia, nitrogen, phosphorous, biochemical oxygen demand and *Escherichia coli*. The median across the catchment is graded:

- A = 90 – 100 (very good)
- B = 80 – 89.9 (good)
- C = 70 – 79.9 (fair)
- D = 40 – 69.99 (poor)
- E = 0 – 39.9 (very poor)

Ōtākaro-Avon River catchment WQI score: B

Sediment Quality Index (SQI) Score

We use a SQI specific to instream sediment of Christchurch waterways. This index is scored against guideline levels for copper, lead, zinc and polycyclic aromatic hydrocarbons. The median across the catchment is graded:

- A = 90 – 100 (very good)
- B = 80 – 89.9 (good)
- C = 70 – 79.9 (fair)
- D = 40 – 69.99 (poor)
- E = 0 – 39.9 (very poor)

Ōtākaro-Avon River catchment SQI score: D



Tuna-Eels



Inanga-Whitebait

Credit: Boffa Miskell

Quantitative Macroinvertebrate Community Index (QMCI) Score



The QMCI assesses the macroinvertebrate species (organisms with no spine) present and their tolerance to pollution, to determine a waterway's likely water quality. The index values are converted to scores for grading the catchment:

- A = 6.00+ (excellent; clean water)
- B = 5.00 – 5.99 (good; likely mild pollution)
- C = 4.00 – 4.99 (fair; likely moderate pollution)
- D = 0 – 3.99 (poor; likely severe pollution)

Ōtākaro-Avon River catchment QMCI score: C

The Ōtākaro-Avon River catchment overall score is D

Contact us

-  Quality and Compliance Team, Three waters
-  waterbodyecology@ccc.govt.nz