

## Transitional Plan Update #14 – Organics Processing Plant

29 November 2021 – 12 December 2021

Actions in this plan cover a transitional period until proposed upgrades can be completed at the Christchurch City Council composting facility located in Metro Place, Bromley. Please find below an update on each of the key objectives outlined in the Transitional Plan.

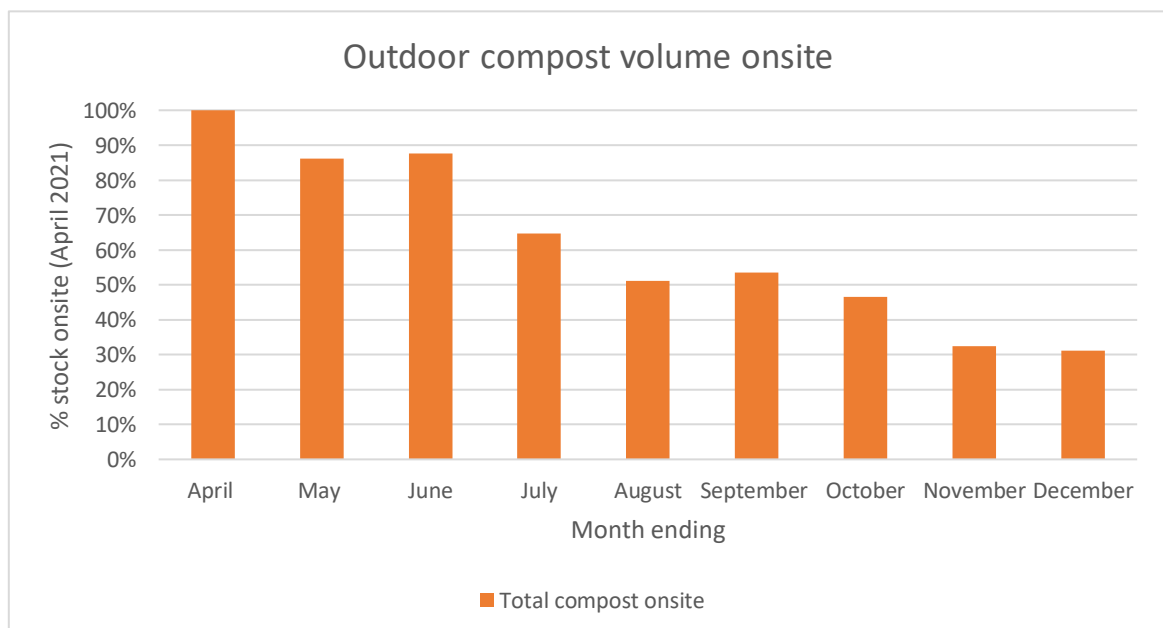
### 1. Stop receiving pre-consumer food organics.

Pre-consumer food organics have not been accepted at the Organics Processing Plant since 23 December 2020.

Date	Tonnes of pre-consumer food waste received
09/08/21 – 22/08/21	0
23/08/21 – 05/09/21	0
06/09/21 – 19/09/21	0
20/09/21 – 17/09/21	0
18/09/21 – 31/10/21	0
01/11/21 – 14/11/21	0
14/11/21 – 28/11/21	0
29/11/21 – 12/12/21	0

### 2. Minimise the onsite storage of finished compost by prioritising the screening and removal of finished product from the site.

Living Earth is currently removing the majority of stockpiled material from the site. As of 12 December 2021, the total material onsite had reduced by 69%, shown in the graph below. Current activity includes the removal of all outdoor windrow material, in addition to the removal of material directly from the tunnels.



*\*Figures up to 12 December.*

The existing material stored in outdoor windrows is being moved towards the screening shed for screening before being moved off site, as shown below. This is to increase operational efficiency and decrease loader movements.

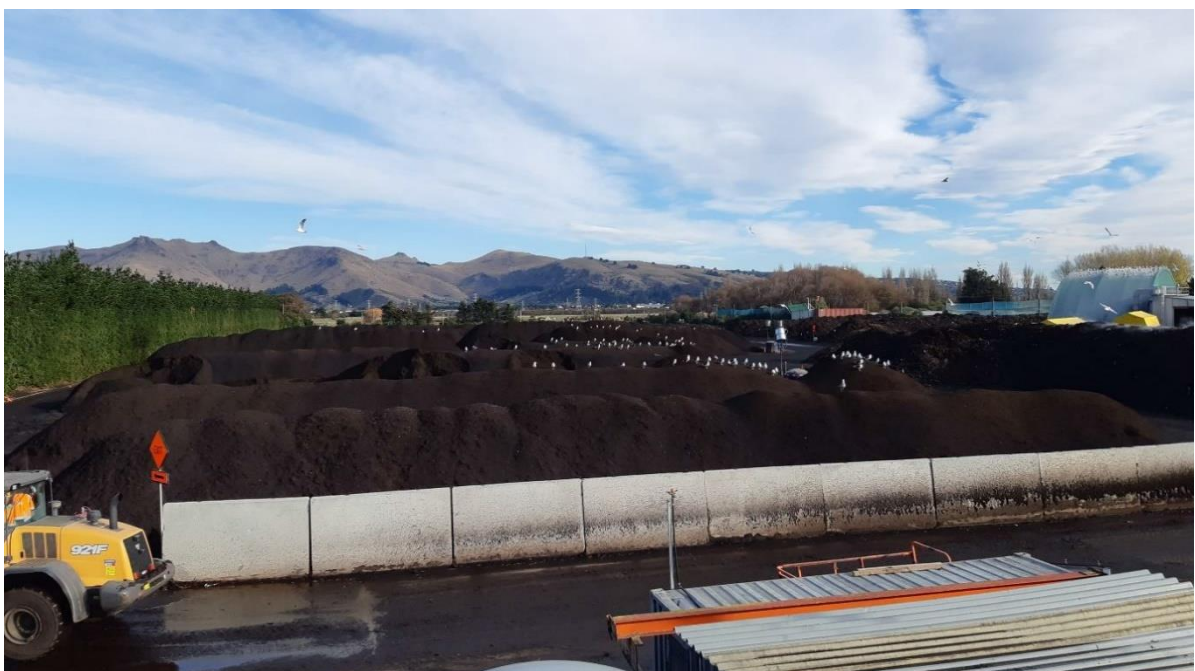


This consolidation will result in more material on the concrete pad from previous photos, however the percentage of total material on site continues to decrease.

### **3. Install a time-lapse camera so that residents can see the reduction in outdoor storage**

The camera has been regularly recording time-lapse data which is updated on the website. See below the image from 18 May 2021 compared to 16 December 2021.

Before:



Now:



#### **4. Maintain effective treatment of processing air, including maintenance of bio filter.**

The biofilter is working well since work was completed in May and the improved backpressure and airflow rates have been sustained. Temperature and back pressure is being monitored. New roof cover for the screening shed is in place.

#### **5. Investigate additional buffering, including boundary plantings, along the southern site boundary.**

Additional plantings are planned around the boundary of the composting facility to provide an additional natural buffer around the site. This includes plantings on land to the south of the facility that is currently leased so agreement from the lease-holder will be obtained.

The Parks Team has provided a list of appropriate species for the area and we are now developing a broad plan for planting at the organics plant and neighboring transfer station.

#### **6. Maximise stability of compost onsite.**

Living Earth initiated a trial of a probiotic additive to the compost. The trial was to establish if this additive will accelerate the composting process. The trial was successful and we are looking at using the probiotic as a permanent part of the process going forward.

#### **7. Address community concerns and keep the community informed via regular community meetings and an information newsletter.**

Communication with the community happens regularly via fortnightly transitional plan newsletters, and community meetings. The regular community meeting was held on 16 November 2021. The group has decided to continue with the wider Bromley odour liaison group and not the processing plant consent focused CLG.

#### **8. Organics plant upgrade project update**

After the Council meeting on 9 September 2021, officers have commissioned a feasibility study to investigate building a new facility at another location. This is currently underway and will be reported back to Council in March next year. This will include upgrading the existing site as an option if no other site is viable.

## 9. Other odour issues

If you wish to receive newsletter updates related to the Christchurch wastewater treatment plant fire visit [www.ccc.govt.nz/wastewaterfire](http://www.ccc.govt.nz/wastewaterfire)