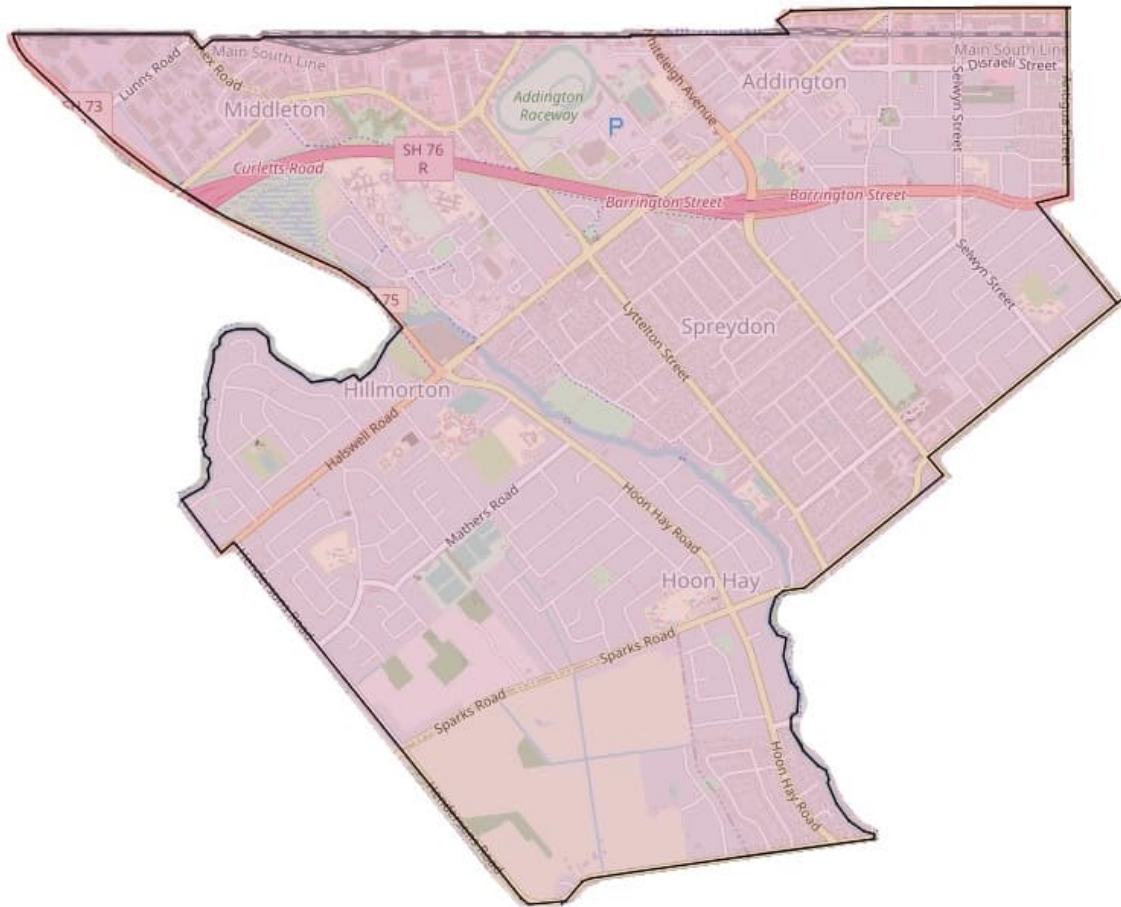


# SPREYDON WARD PROFILE

February 2023



The Spreydon Ward includes the suburbs of Addington, Hillmorton, Hoon Hay and Spreydon.

The ethnic diversity for the ward compared to Christchurch City shows similar numbers of people identifying as Māori and Asian, a slightly higher number identifying as Pacific Peoples and a slightly lower number identifying as European. The Hillmorton suburb is the most ethnically diverse neighborhood in the profile area.

The land is flat and unbroken by major natural features. The Ōpāwaho/Heathcote River flows through the area. Annual events include the community managed Hoon Hay Fiesta and Hoon Hay Hoops, a youth 3v3 Basketball competition.

Addington was established to serve traditional industrial activities and housing around the railway yards and workshops in the late 1800s. Since the mid-2000s, this industrial character has given way to modern office buildings. The resulting change in the employment base has initiated modest gentrification.

There are a range of leisure and recreational opportunities in the area including Pioneer Recreation and Sport Centre, which has a swimming pool, wave pool, indoor stadium, fitness centre and includes the Southern Centre.

There is a high proportion of social housing across the ward area with the largest concentration in Hillmorton.

*Profiles compiled by the Community Support and Partnerships Unit*

# Facts and figures

## Demographic Summary (2018 Census Data)

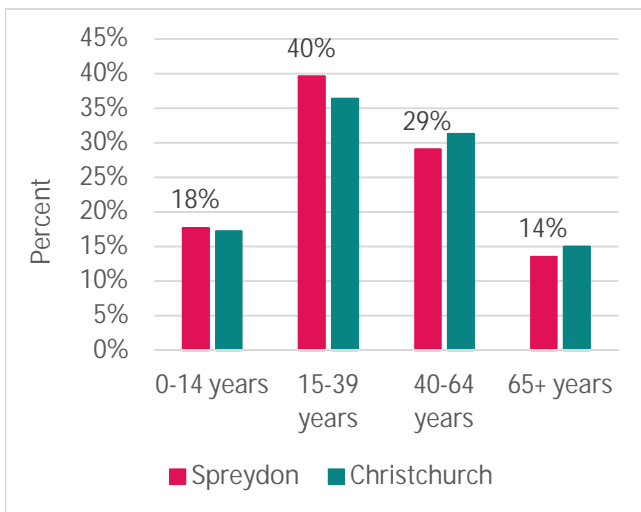
### Population

The population within the Spreydon Ward boundary is: 25,407

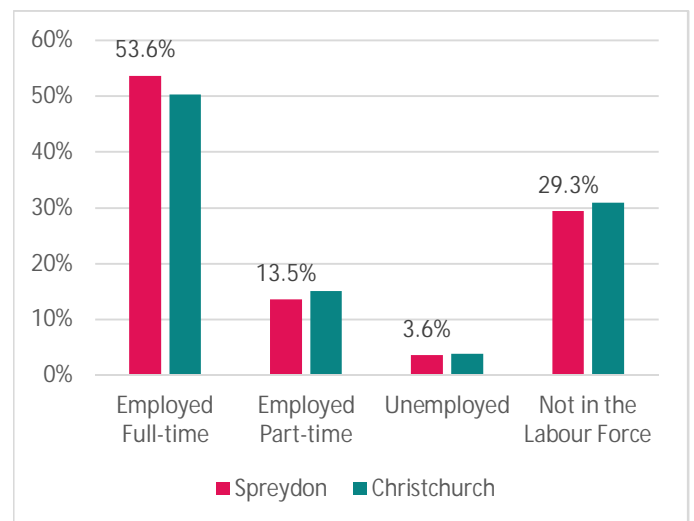


Number of Occupied Private Dwellings: 9,624

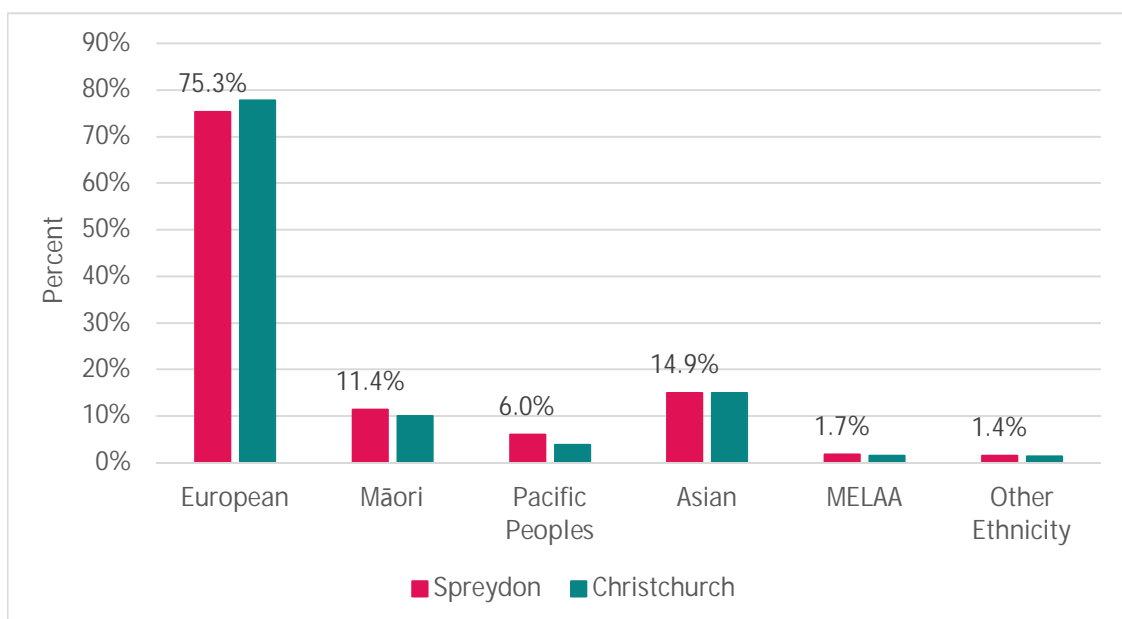
### AGE



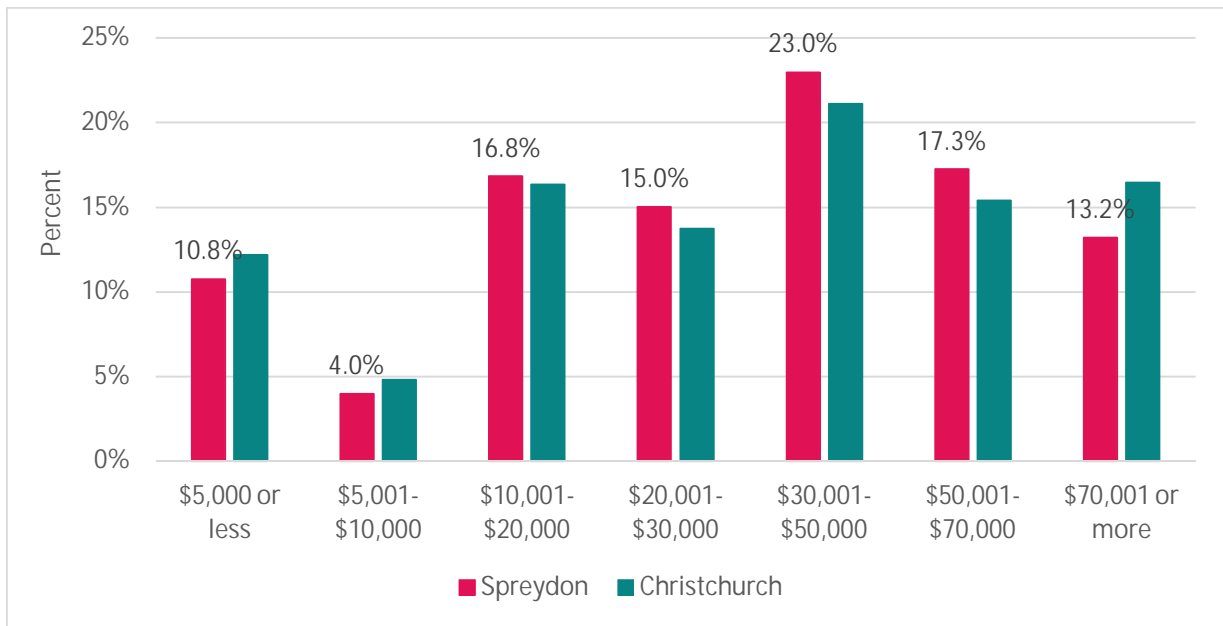
### WORK AND LABOURFORCE STATUS



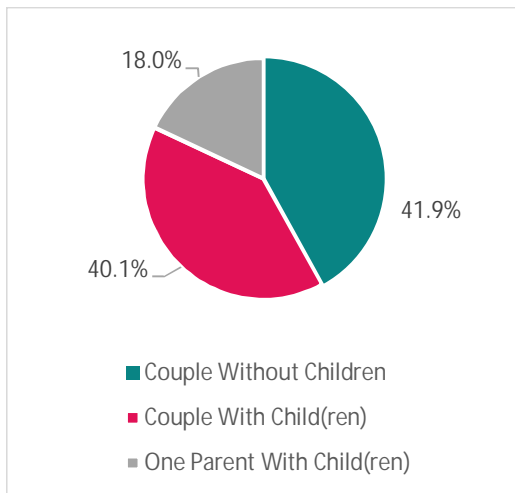
### ETHNICITY



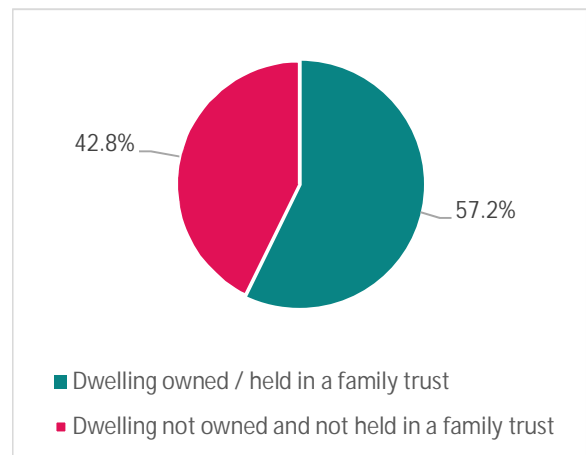
## PERSONAL INCOME



## FAMILY TYPE



## TENURE OF HOUSEHOLDS



## Facilities and Amenities

- 1 Council library at Spreydon
- 15 Council-owned social housing complexes with 515 units
- 495 Kāinga Ora Properties
- 3 shopping centres: Addington, Barrington, Hillmorton
- 10 schools: including 1 high school, 1 intermediate, 7 primary, 1 composite
- 1 public hospital at Hillmorton
- Approximately 2,838 businesses employing 20,188 people (Feb 2021)
- Multiple major sport and recreation amenities: Pioneer Recreation & Sport Centre, Addington Raceway & Events Centre, Horncastle Arena and Orangetheory Stadium

# Socio-economic Deprivation

The aim of the NZ deprivation index research programme is to develop indexes of socioeconomic deprivation for New Zealand, to support and inform:

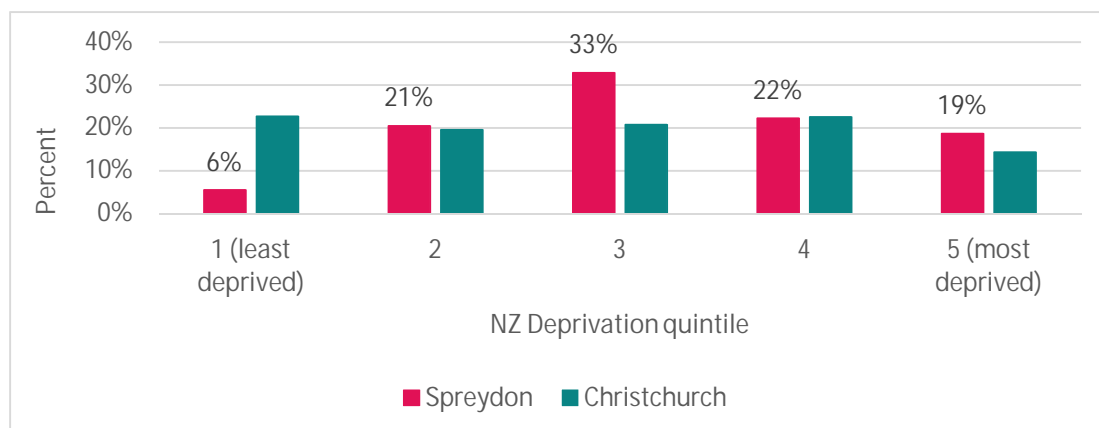
- Application in funding formulas
- Research in especially health and other social services. For example, in the health sector, many researchers use the indexes to describe the relationship between socioeconomic deprivation and health outcomes
- Community groups and community-based service providers to describe the populations they serve, and to advocate for extra resources for community-based services.

The nine variables included in the 2018 deprivation index are as follows:

- People aged 18-64 receiving a means tested benefit
- People living in households with equalised income below an income threshold
- People with no access to the Internet at home
- People aged 18-64 without any qualifications
- People aged <65 living in a single parent family
- People not living in own home
- People living in household with equalised bedroom occupancy threshold
- People aged 18-64 unemployed
- People living in dwellings that are always damp and/or always have mould greater than A4 size.

The scale of deprivation ranges from 1 to 10: 1 represents the areas with the least deprived scores. 10 represents the areas with the most deprived scores.

- Relative to the rest of Christchurch City, Spreydon ward had higher levels of deprivation overall.
- In Spreydon ward, around 19 per cent of this ward's population lived in the 'most deprived' areas (i.e. deciles 9 and 10), compared with 14 per cent of all of Christchurch City's population.
- Around 6 per cent of this ward's population lived in the 'least deprived' areas (i.e. deciles 1 and 2), compared with 23 per cent of all of Christchurch City's population.

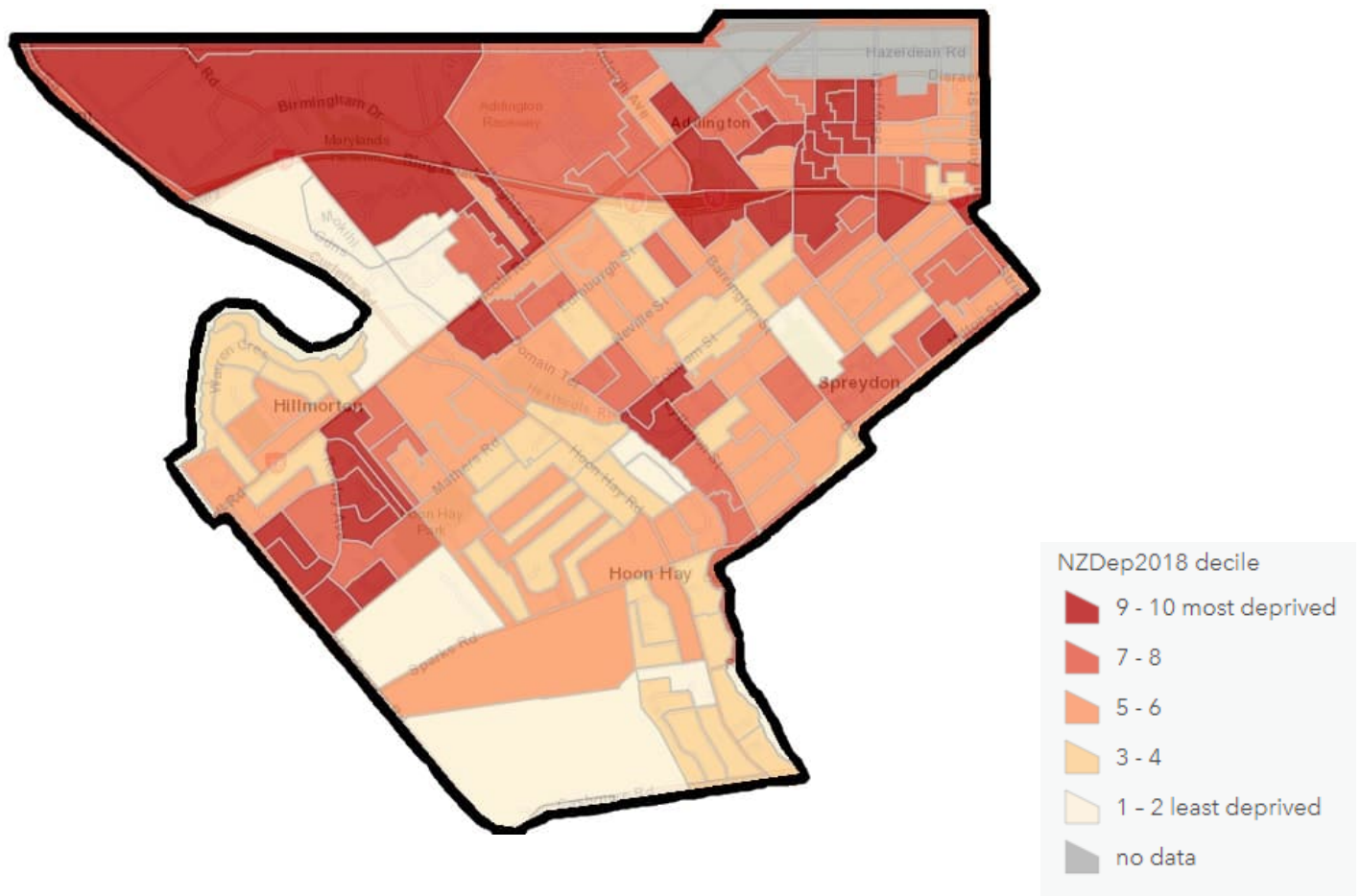


For more information and to view the full NZ Deprivation map visit:

<http://www.ehinz.ac.nz/indicators/population-vulnerability/socioeconomic-deprivation-profile/>

(Massey University)

# Spreydon Ward Deprivation Map



Relative to the rest of Christchurch City, Spreydon Ward has a higher proportion of people living in areas with mid-point and high deprivation levels. 28 percent of the ward's population live in the least deprived areas and 40.7 percent live in the most deprived areas. There are areas of high deprivation in parts of Addington and Hoon Hay.

# Community Infrastructure



Parks and reserves in the area provide plenty of opportunities for sport and recreation. Centennial Park has a cricket pitch and soccer and touch rugby playing fields. Hoon Hay Park has seven touch rugby playing fields, a skateboard park and a full size basketball court and Barrington Park provides multiple playing fields. At Addington Park there is rugby league and Spreydon Domain has playing fields for cricket, softball and Gaelic football.

The Southern Centre is a multi-sensory environment experience for people of all ages and abilities. It provides a relaxing space, which helps reduce stress levels and develop social skills. It is located at Pioneer Sport and Recreation Centre.

# Community Outcomes

The Community Outcomes have been developed as part of the Council's Strategic Framework, which provides a big picture view of what the Council is trying to achieve for the community.

The Community Outcomes describe what we aim to achieve for Christchurch. They are:

- Resilient communities
- Liveable city
- Healthy environment
- Prosperous economy

You can view the Council's Strategic Framework and read more about the Community Outcomes here: <https://ccc.govt.nz/the-council/how-the-council-works/20182028-vision/strategic-framework>

The narrative below provides an overview of the area in relation to each of the outcomes.

## Resilient Communities

Community organisations, social support agencies and groups that focus on community wellbeing are well connected. These groups offer an extensive range of community activities, programmes, resources networks and events in the area. These connections help to identify opportunities to support one another and work together collaboratively.

There are residents groups in Hoon Hay, Addington, Spreydon and Linden Grove. These groups provide opportunities for residents to connect socially and also a forum where local issues and areas of concern can be raised. These can then be brought to the Waihoru Spreydon-Cashmere -Heathcote Community Board and the Christchurch City Council as appropriate.

Churches have a strong community focus and offer a range of community programmes, activities, services, resources and events. The Southwest Baptist Church has a community focus and wide reach through their community initiatives. Their two youth programmes are well established and they work with providers that deliver services across south west Christchurch.

The Rowley Resource Centre has been part of the community for over 25 years. This community resource centre has a focus on enabling growth through the provision of services, facilities, courses and groups for the improvement of lives in the community.

Manuka Cottage Addington Community House is a community development agency and resource centre. It offers information, resources, support and drop in activities to address social isolation and connect people in the area. It is also the base for Addington Timebank, Addington Oscar and Addington Wellbeing.

## Liveable City

There is a wide range of social, recreational and sport activities in the area. A popular touch rugby programme provides a core focus for positive youth development for organisations in the area.

Transport features include the railway and State Highway 73 (Brougham Street). Each day more than 8000 workers travel into Addington and Sydenham to work in the light industry zone adjacent to the railway line and Lincoln Road commercial blocks. The city west to east traffic flow now places pressure on the Brougham Street motorway and key adjoining roads, particularly at peak travel times.

Concerns regarding road safety have been raised by residents in suburbs across the area. These include speeding vehicles and inadequate safe crossing islands on busy roads such as Hoon Hay Road. The Community Board have advocated for a range of transport and road safety initiatives in the area, connected to traffic management and the associated safety issues for pedestrians and cyclists.

In Addington there are major safety concerns for children and families crossing Brougham Street to get to Addington Te Kura Taumatua School. Waka Kotahi plans for improvements on Brougham Street include a concept plan for a pedestrian overbridge to assist with this.

Cottages and small character villas feature strongly in some of the residential areas. In suburbs across the area many of these older houses are being demolished and replaced with multi-storey dwellings, high density and infill housing.

## Healthy Environment

The Ōpāwaho/Heathcote River flows along the boundary between Barrington North and Hoon Hay, and along the eastern and northern edges of Hillmorton, through residential and public domain areas. It has a history of flooding and poor water quality and following the 2010/11 earthquakes some bed depth changes and silt deposits.

The Christchurch City Councils has a 'six values' approach to water management. These are ecology, landscape, recreation, heritage, culture and drainage, which are incorporated into system designs. The flood mitigation infrastructure on the Ōpāwaho/Heathcote River has provided a significant opportunity to improve water quality and provide for some of the community aspirations for along the river corridor.

The Healthy Ōpāwaho/Heathcote River project is encouraging young people from schools and early learning centres to take guardianship of the river. This pilot project is a collaborative community approach to conservation education that aims to connect students along the river to take action to power environmental change within the Ōpāwaho/Heathcote River context. Some local people have landscaped the river bank adjoining their properties. The terrain across the area is flat and there has been sporadic flooding issues.

## Prosperous Economy

There are shopping areas in Addington along Lincoln Road, Barrington Mall, Hillmorton and Selwyn Street.

The area features the railway and State Highway 73 (Brougham Street). Thousands of workers travel into Addington and Sydenham to work in the light industry zone adjacent to the railway line and Lincoln Road commercial blocks.

Addington has an area of light industry, commercial and office development. It is highly accessible by car and public transport and traffic congestion is present throughout the day and particularly heavy at peak times. Parking has been provided as part of these developments, however many of the people working here prefer to park in surrounding neighbourhood streets. This is an issue for residents who find they are unable to park by their homes. An issue that is increasing with high density and multi-storey housing being built that has no provision for parking vehicles. The area is adjusting to serve a newer, more affluent employment base and a surrounding residential area whose density is increasing.

As of February 2021 the Spreydon Ward had approximately 2,838 businesses employing 20,188 people. The top six industry type (in order) are;

1. Construction
2. Rental, Hiring and Real Estate Services
3. Professional, Scientific and Technical Services
4. Retail Trade
5. Wholesale Trade
6. Manufacturing



# Current Community Issues

Issue	Progress to date / outcomes
<p>Travel Networks:</p> <p>The southwest of Christchurch is growing fast, with 35,000 people expected to move into the area over the next 30 years. A growth that puts additional pressure on travel networks in the area. Plans are being made to prepare for a better way for people to travel to and from the central city.</p> <p>Lincoln Road Improvements:</p> <p>Stage 1 – between Moorhouse and Whiteleigh Avenue. Peak hour bus lanes to be installed on both sides of Lincoln Road. The speed limit on Lincoln Road between Moorhouse Avenue and Whiteleigh Street to be reduced to 30kmh. A new traffic light controlled pedestrian crossing to be installed by Addington Village to allow people to cross the road safely.</p> <p>Stage 2 – originally this covered the area between Wrights Road and Curletts Road. This has now changed to cover the area between Whiteleigh Avenue and Curletts Road. The proposed plan is to install peak hour bus lanes along Lincoln Road between Whiteleigh Avenue and Curletts Road. This project will connect with the peak hour bus lanes installed in Addington as part of stage one. Council are working closely with Waka Kotahi and their plans to install bus lane along Halswell Road.</p>	<p><u>February 2021</u></p> <p>Design approved by Christchurch City Council. Construction scheduled for 2021.</p> <p><u>February 2022</u></p> <p>Construction scheduled to start early 2022.</p> <p><u>February 2023</u></p> <p>Completed.</p> <p><u>February 2021</u></p> <p>Consultation on the proposed options is scheduled for 2021.</p> <p><u>February 2022</u></p> <p>Consultation took place between 16 November and 12 December 2021. Hearings are due to take place on 28 February, with the decision meeting in March/April.</p> <p><u>February 2023</u></p> <p>Construction scheduled to start in 2024</p>
<p>SH 75 Halswell Road Improvements: (Dunbars to Curletts Roads)</p> <p>Waka Kotahi proposed improvements include two bus lanes, in addition to the existing lanes, along this 2.5km high use section. Consideration will be given as to how to operate these lanes and if other road users will have access to them.</p> <p>Waka Kotahi is working closely with Christchurch City Council transport improvements along Lincoln Road. Both are seeking complimentary projects outcomes along the entirety of the south-west corridor to ensure seamless bus journeys for customers.</p>	<p><u>February 2021</u></p> <p>The proposed project will add capacity to the public transport network in the high growth south-west area of Christchurch. Work is scheduled to begin in 2022.</p> <p><u>February 2022</u></p> <p>Public engagement around the proposed improvements took place between 8 April and 4 May 2021. Work is scheduled for 2022.</p>

Issue	Progress to date / outcomes
<p>SH 76 Brougham Street Upgrade:</p> <p>Waka Kotahi are recommending a series of changes to make use of the existing road space. Ideas and feedback from the community have helped shape the plans.</p>	<p><u>February 2022</u></p> <p>The proposed changes came out for public consultation in November 2021 and feedback closed 28 January 2022.</p> <p><u>February 2023</u></p> <p>Commencement of this project has been delayed.</p>
<p>Barrington Mall:</p> <p>Project to improve traffic safety at the entrance and exit of the mall on to Barrington Street.</p>	<p><u>February 2021</u></p> <p>Project commenced.</p> <p><u>February 2022</u></p> <p>Project completed.</p>
<p>Hoon Hay Park:</p> <p>A project to upgrade the toilets, changing room facilities and sports storage at Hoon Hay Park.</p>	<p><u>February 2021</u></p> <p>Funding for the projects needs to be allocated in the Long Term Plan.</p> <p><u>February 2022</u></p> <p>Long Term Plan funding for the project has been allocated for financial years 2025 to 2029.</p>
<p>Social Isolation:</p> <p>Projects to address the risk of disconnection from others particularly older adults. The Older Adults Network and Age Friendly Committee have initiated a transport accessibility study and a new older adult's services directory.</p>	<p><u>February 2021</u></p> <p>The Spreydon-Cashmere Older Adults Network and the Age Friendly Spreydon-Cashmere committee interact regularly with community board members. The groups have initiated a transport accessibility study and an older adults services and activities guide for the ward.</p> <p>The community board is supporting a feasibility study for an adult playground.</p> <p><u>February 2022</u></p> <p>Multiple submissions were made by the Age Friendly committee to local and central government consultations on the crucial role affordable, accessible, and available public transport has to ensure social inclusion and contribution from older adults. Several locations identified by the committee are to have rest seating installed.</p> <p>The Activities and Services Guide for Older Adults living in Spreydon and Cashmere has been completed and is distributed through appropriate locations in the area.</p>

Issue	Progress to date / outcomes
<p><i>Social isolation cont...</i></p>	<p><u>February 2023</u></p> <p>Checks with organisations during COVID restriction periods showed that community groups were aware of and able to assist vulnerable and older neighbours, and that some reluctance to participate in groups has lingered once closer contact was permitted.</p> <p>The Waihoru Spreydon-Cashmere-Heathcote Community Board has endorsed the continuation of the Age Friendly Spreydon-Cashmere Committee and its expansion to include the Heathcote Ward.</p>
<p>Emergency Preparedness: Maintenance of local plans and groups that can respond appropriately to diverse emergencies or disruptions.</p> <p>July 2022 Floods</p>	<p><u>February 2021</u></p> <p>Preparedness and residents' groups are encouraged to plan for emergencies. An information update workshop between Spreydon-Cashmere groups and Civil Defence is planned for 2021.</p> <p><u>February 2022</u></p> <p>While an update with preparedness and resident groups remains pending, two community created emergency hubs have been maintained. The voluntary committees responsible have continued to develop activation plans and promote preparedness planning in their neighbourhoods.</p> <p><u>February 2023</u></p> <p>Community Resilience Coordinators have connected with local preparedness groups such as the Cashmere Emergency Preparedness Team and the Somerfield Community Emergency Response Team to advise on their role in relation to emergency support hubs as well as their wider role with Civil Defence.</p> <p><u>February 2023</u></p> <p>Storm floods in Canterbury in July 2022 were lessened in impact by the use of storm water basins in the Ōpāwaho /Heathcote catchment storing some 1.5 million cubic metres of storm water. House floor levels were not breached.</p> <p>Local staff provided real time intelligence reports to Civil Defence during the July storm.</p>

Issue	Progress to date / outcomes
<p><i>Emergency preparedness cont...</i></p> <p>COVID-19 impact management</p>	<p>Community Resilience Coordinators have connected with local preparedness groups such as the Cashmere Emergency Preparedness Team and the Somerfield Community Emergency Response Team to advise on their role in relation to emergency support hubs as well as their wider role with Civil Defence.</p> <p>The COVID-19 lockdowns initiated in March 2020 and August 2021 have meant new experience based learnings for households, community groups, businesses and agencies. A snapshot health check by Council staff of diverse groups early in the 2021 lockdown showed increased community confidence and competence to deal with the disruption, at least for the short term. Longer term, community meetings, facility use, community development initiatives, fund raising events, and public entertainment events have reduced significantly – with some amelioration through expanded use of virtual communication technologies.</p>
<p>90 Hoon Hay Road:</p> <p>Hoon Hay Community Centre. The community board will work with the community to support the activation and future use of the property as a community centre.</p>	<p><u>February 2021</u></p> <p>A feasibility study and strategic plan have been completed.</p> <p><u>February 2022</u></p> <p>The focus of the strategic plan has been to increase the use of the community centre. Over the last 12 months this has been achieved through community events and an increase in hire use.</p> <p><u>February 2023</u></p> <p>A concept plan in being prepared for the upgrade of the centre. Expected commencement 2023.</p>
<p>Selwyn Street:</p> <p>Proposal to install a series of temporary safety measures, funded from Innovating Streets.</p>	<p><u>February 2021</u></p> <p>Initial community workshops done and proposed design plans created. A re-gather workshop is planned in March.</p>

Issue	Progress to date / outcomes
<p><i>Selwyn Street cont...</i></p>	<p><u>February 2022</u></p> <p>Safety measures taken by the shops have been a speed change from 50 to 30 kmh and the repainting the zebra crossing. Any further changes will be dependent on budget.</p> <p><u>February 2023</u></p> <p>No further work planned.</p>
<p>Selwyn Street Master Plan:</p> <p>The Selwyn Street Shops Master Plan contains a strategic vision to transform the centre into a prosperous, attractive place for people to live and visit, to spend time and to do business.</p> <p>The vision is supported by five goals, which are to be delivered through nine detailed implementation actions/projects. These encourage Council, private sector, community and government led decision making to align and move forward together in a logical sequence.</p>	<p><u>February 2022</u></p> <p>Under the 2021-31 Long Term Plan (LTP), funding is allocated to deliver a streetscape and movement project in 2022/23.</p> <p><u>February 2023</u></p> <p>Selwyn Street Reserve has been newly planted and pathways refreshed. A mural has been done on the toilet block. This was a community project done by Te Kura Taumata Addington School.</p> <p>Council have started scoping the street environment and movement aspects of the plan including improvements for Selwyn Street/Coronation Street intersection improvements. Funding is in the long term plan for 2022/23.</p>
<p>Climate Change:</p> <p>Meeting the challenge of climate change through every means possible is a Council strategic priority.</p>	<p><u>February 2022</u></p> <p>Mitigation measures to protect against the Ōpāwaho/Heathcote River flooding have been of benefit during two heavy rainfall alerts.</p> <p>Residents have identified the importance of the retention and provision of tree canopy cover on intensified residential properties to maintain carbon absorption, reduce concrete surface contributions to global warming, provide shelter, and support mental wellbeing.</p> <p>Council has approved a Climate Change Strategy for which the community board provided a submission.</p>

Issue	Progress to date / outcomes
<p>Residential Intensification:</p> <p>Increased concern from residents and their associations about new and accelerated residential developments.</p>	<p><u>February 2022</u></p> <p>Individual residents and resident groups have presented to the Community Board about negative impacts of in particular high rise residential dwellings and policy changes. Community board members have advocated for tree protections and requested Government policy consider unique factors in hillside neighbourhoods.</p> <p><u>February 2023</u></p> <p>Intensification of housing continues to increase in all suburbs and with it a loss of green space. Concerns about the impacts of new government housing development policies remain. Government has appointed a representative to work with Council on its intensification plan.</p>