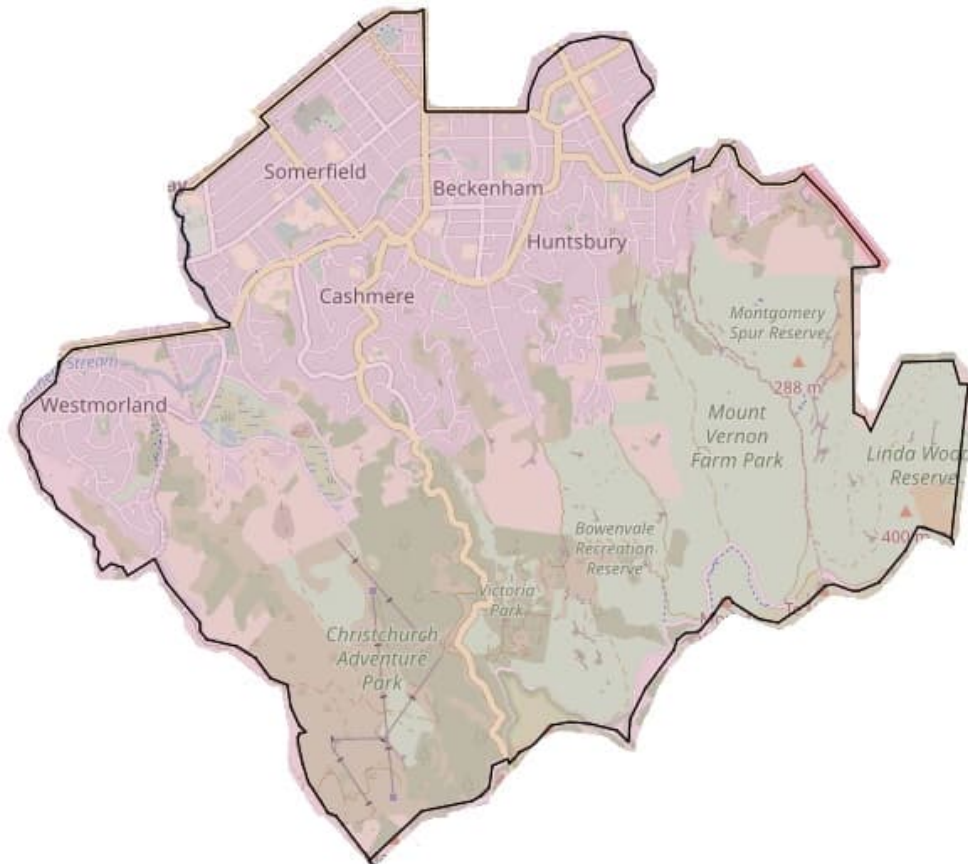


CASHMERE WARD PROFILE

February 2023



The Cashmere Ward includes the suburbs of Westmorland, Cracroft, Somerfield, Cashmere, Beckenham, Huntsbury, and St Martins. The ward extends into part of the southern Hoon Hay area on the eastern side, and the Murray Aynsley/Hillsborough area on the western side. The southern area of Cashmere spans the Port Hills up to the Summit Road and contains regional parks valued as environmental and recreational assets to the city, some agricultural properties, and emerging housing developments. The Opawaho/Heathcote River is a major natural feature of the area that journeys through residential neighbourhoods. Special heritage buildings in the Cashmere Ward include stone construction churches, the Sign of the Takahe, and the Old Stone House. Dyers Pass Road provides a key route to Banks Peninsula.

There is a shopping and service amenities centre in St Martins and residents also access the mall and services on Barrington Street in the adjacent Spreydon Ward. The South Library and Service Centre in Beckenham attracts customers from both Cashmere and wider Christchurch. Three general practice medical centres are located in the ward. The Princess Margaret Hospital on Cashmere Road is nearing the end of its use and provides limited health services. Most housing is privately owned, and household incomes tend to lie in middle to high levels. All of the nine schools in the ward are co-educational.

The usually resident population was 25, 248 in 2018, and there were 9,717 occupied dwellings or households. While there are proportionately slightly more people in the under 15 years and over 65 years age groups than Christchurch as a whole, there are larger differences in the 15-39 years (28 per cent compared to 36 per cent), and 40-64 years (36 per cent compared to 31 per cent) age groups.

Facts and figures

Demographic Summary (2018 Census Data)

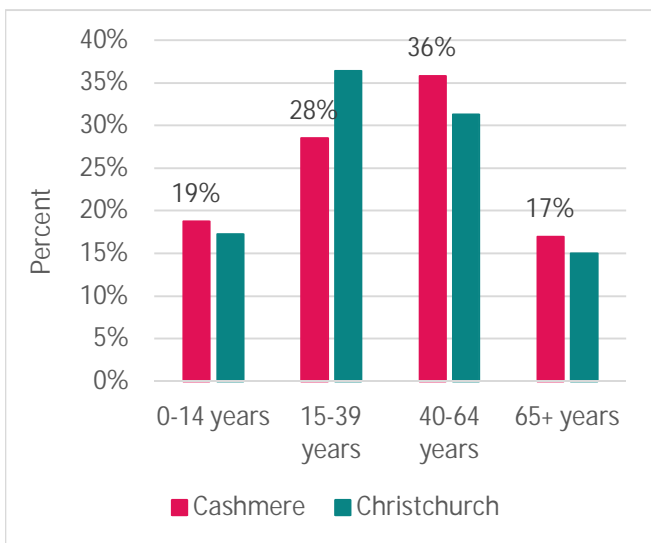
Population

The population within the Cashmere Ward boundary is: 25,248

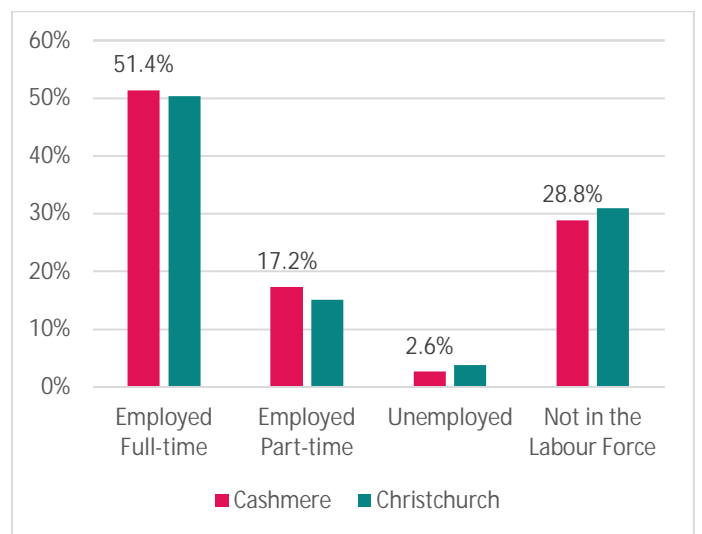


Number of Occupied Private Dwellings: 9,717

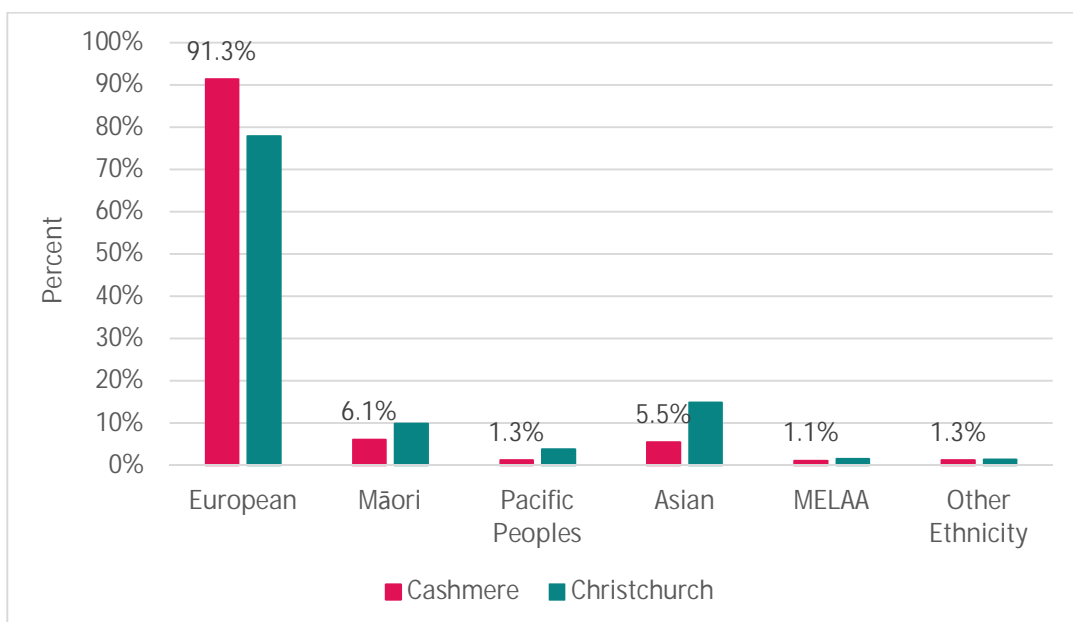
AGE



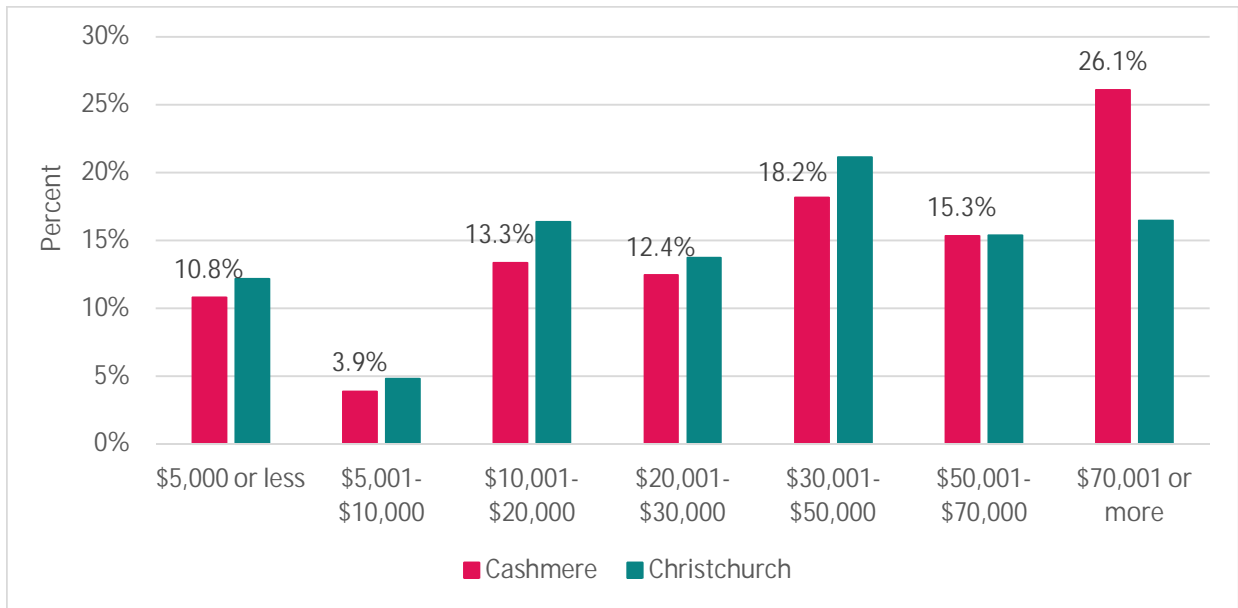
WORK AND LABOURFORCE STATUS



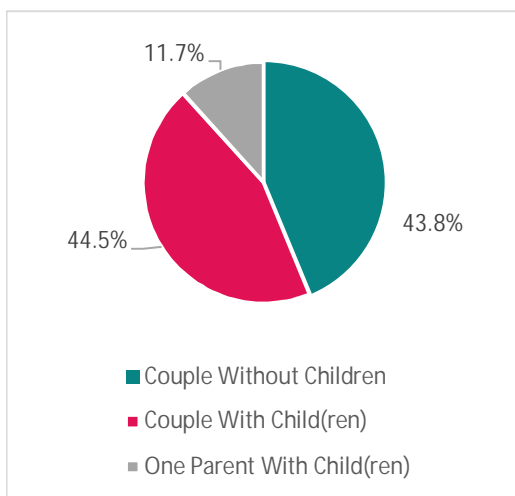
ETHNICITY



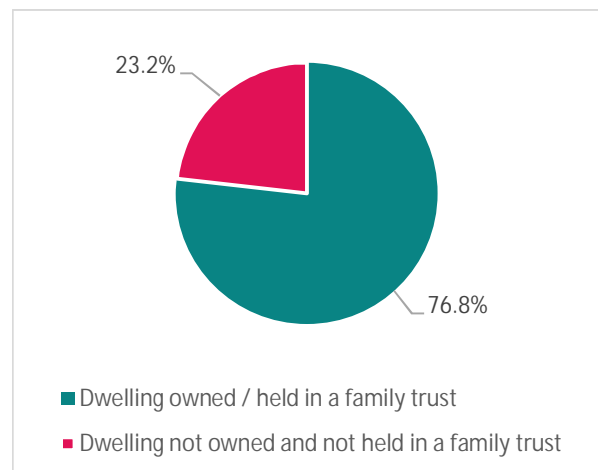
PERSONAL INCOME



FAMILY TYPE



TENURE OF HOUSEHOLDS



Facilities and Amenities

- 1 Council library: South Library
- 1 Council Service Centre: Beckenham
- 2 Council-owned social housing complexes with 53 units
- 2 shopping centres: Beckenham, St Martins
- 9 schools: 7 primary, 1 secondary, 1 composite year 1-13
- 1 public hospital: The Princess Margaret Hospital
- Approximately 2,544 businesses employing 4,877 people (Feb 21)
- Major sport and recreation amenities: Victoria Park, Christchurch Adventure Park

Socio-economic Deprivation

The aim of the NZ deprivation index research programme is to develop indexes of socioeconomic deprivation for New Zealand, to support and inform:

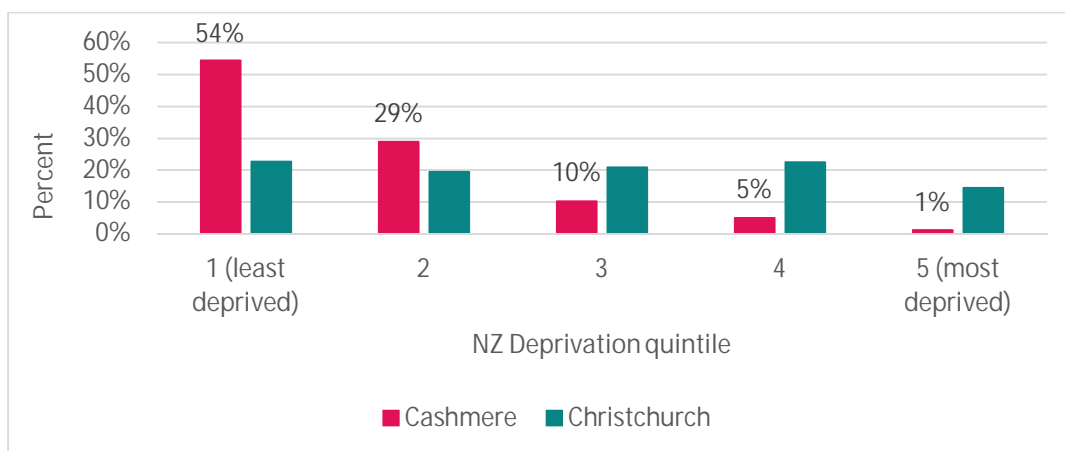
- Application in funding formulas
- Research in especially health and other social services. For example, in the health sector, many researchers use the indexes to describe the relationship between socioeconomic deprivation and health outcomes
- Community groups and community-based service providers to describe the populations they serve, and to advocate for extra resources for community-based services.

The nine variables included in the 2018 deprivation index are as follows:

- People aged 18-64 receiving a means tested benefit
- People living in households with equivalised income below an income threshold
- People with no access to the Internet at home
- People aged 18-64 without any qualifications
- People aged <65 living in a single parent family
- People not living in own home
- People living in household with equivalised bedroom occupancy threshold
- People aged 18-64 unemployed
- People living in dwellings that are always damp and/or always have mould greater than A4 size.

The scale of deprivation ranges from 1 to 10: 1 represents the areas with the least deprived scores. 10 represents the areas with the most deprived scores.

- Relative to the rest of Christchurch City, Cashmere ward had lower levels of deprivation overall.
- In Cashmere ward, around 1 per cent of this ward's population lived in the 'most deprived' areas (i.e. deciles 9 and 10), compared with 14 per cent of all of Christchurch City's population.
- Around 54 per cent of this ward's population lived in the 'least deprived' areas (i.e. deciles 1 and 2), compared with 23 per cent of all of Christchurch City's population.

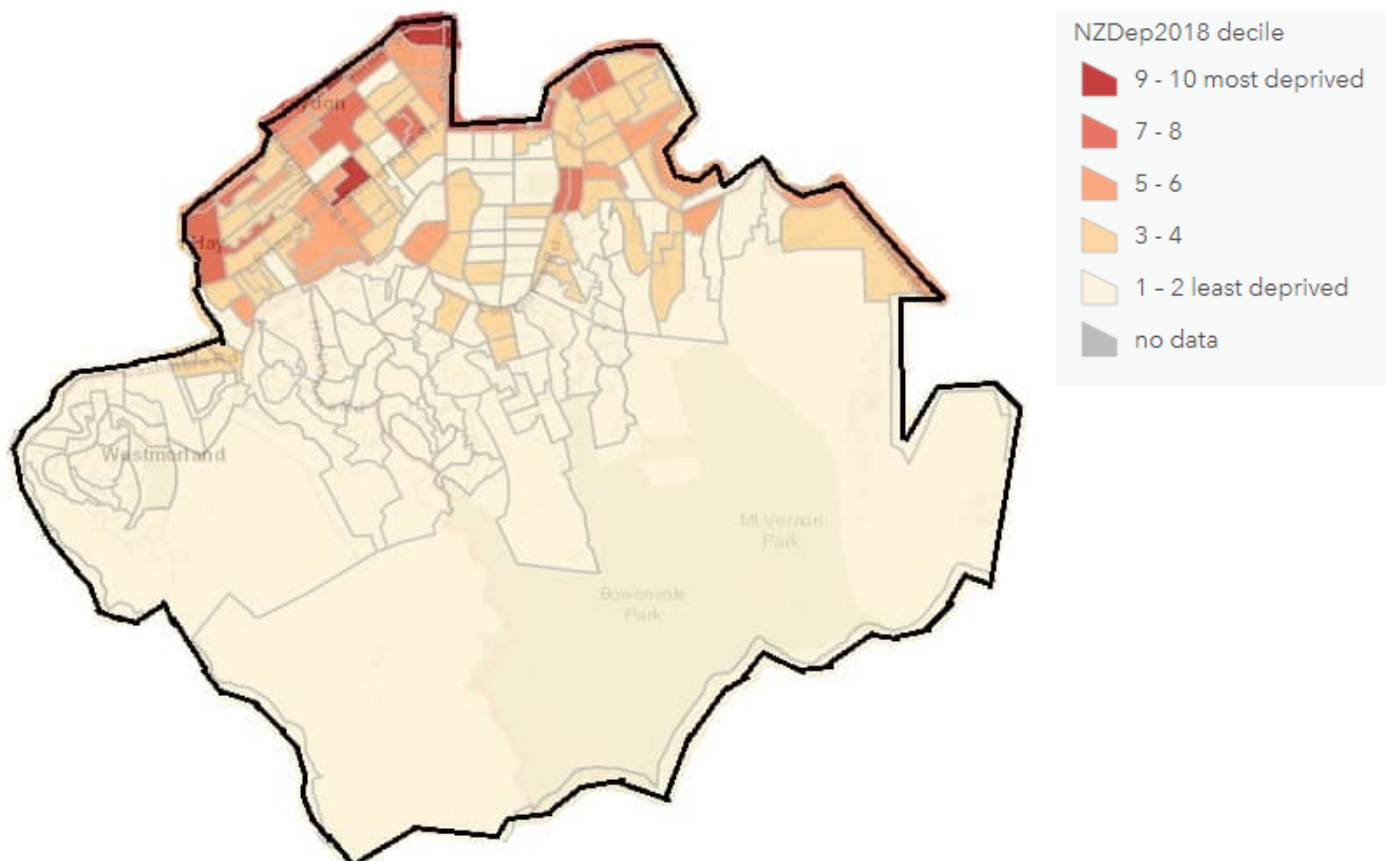


For more information and to view the full NZ Deprivation map visit:

<http://www.ehinz.ac.nz/indicators/population-vulnerability/socioeconomic-deprivation-profile/>

(Massey University)

Cashmere Ward Deprivation Map



In 2018, 84 per cent of the Cashmere Ward population lived in less deprived areas of the New Zealand Deprivation Index (deciles 1-2) compared to 23 per cent of Christchurch residents. Contributing factors towards relative affluence include 77 per cent of household tenure being owned, partly owned, or held in a family trust compared to 57.2 per cent in Spreydon Ward and 64.5 per cent in Heathcote Ward.

Cashmere residents have slightly higher rates of full and part time employment than Christchurch residents as a whole, however working age personal income levels of over \$70,001 per annum are significantly higher at 26 per cent compared to 16 per cent for Christchurch as a whole.

While the hillside neighbourhoods show the least deprivation scores, there are pockets of higher deprivation scattered across neighbourhoods that lie towards the northern area of the ward. The combined deprivation quintiles 3-5, apply to 16 per cent of Cashmere residents compared to 58 per cent for Christchurch as a whole.

Community Infrastructure



While there are no organisations operating premises solely dedicated to community development, there are some eight friendship groups or associations catering to retired, semi-retired, or older adults, one MenZshed, and four community service organisations including Rotary and Lions groups based in the ward. The Christchurch South Library and Service Centre and the Cashmere Club provide significant social meeting and group booking spaces. Most faith-based organisations provide community outreach or social connection activities, especially for more vulnerable older people. There are six residents' groups of which five are fully active.

Two toy libraries, and several Playcentres are operated by and cater to young families. All schools are co-educational, comprising one state secondary school, one primary school, one composite state-integrated school, and six state primary schools. Bookable community facilities that are Council owned and community managed operate in Somerfield, Cracroft, and Landsdowne, while the Huntsbury centre is community owned and managed. The St Martins Community Centre is booked through Council, and the co-located voluntary library is community managed.

There are more than 40 groups identified in the Cashmere Ward that provide organised sport, recreation and leisure opportunities. There are approximately 23 clubs that develop specific sports disciplines and participation, four brigade/guide or scouts groups, and a range of regular walking groups that includes Council coordinated and self-organised groups. There is increased youth interest in basketball, including for improved provision of basketball courts in parks to enable hoops competitions to be played.

Community Outcomes

The Community Outcomes have been developed as part of the Council's Strategic Framework, which provides a big picture view of what the Council is trying to achieve for the community.

The Community Outcomes describe what we aim to achieve for Christchurch. They are:

- Resilient communities
- Liveable city
- Healthy environment
- Prosperous economy

You can view the Council's Strategic Framework and read more about the Community Outcomes here: <https://ccc.govt.nz/the-council/how-the-council-works/20182028-vision/strategic-framework>

The narrative below provides an overview of the area in relation to each of the outcomes.

Resilient Communities

Community and neighbourhood surveys have indicated a positive sense of community across residents in the Cashmere Ward, where home tenure tends to be long term and owned rather than rented. Residents' groups encourage place-based identity and pride through regular communications about current social activities, new developments, and historical features. Both formally recognised and informal resident groups are encouraged to present ideas, issues, and updates to Spreydon-Cashmere Community Board meetings. Three groups have also established emergency equipment hubs and preparedness plans for use in the event of emergencies.

While perceptions of leadership appear lower in survey results, community projects and organisations are primarily community inspired, instigated and led. Groups such as the Port Hills Trust and the Opawaho/Heathcote River network attract support from a broad range of stakeholders, and provide multiple avenues for local and city-wide volunteers of all ages to take part in environmental restoration and protection of natural assets and bio-diversity. Street or localised gatherings of neighbours in Cashmere that are encouraged with a small Summer with Your Neighbours subsidy from the Community Board number approximately 30 per year, inviting participation of more than 1400 residents.

The Waihoru Spreydon-Cashmere- Heathcote Community Board supports youth projects and programmes with the aim of cultivating leadership and citizenship, for example: the Spreydon-Cashmere-Heathcote Youth Development grant scheme contributes to cost incurred by young people as they grow and excel in sporting, cultural, and other personal growth activities, and the board contributes funding to 24/7 youth workers at Cashmere High School. The Community Board supports and engages with the Age Friendly committee whose members support and advocate on behalf older adults. Board members regularly attend residents' group meetings to learn about and discuss local views, aspirations and issues.

Liveable City

Neighbourhoods in Cashmere are generally well-served by public transport and access to amenities. The Age-Friendly Spreydon-Cashmere initiative, launched by the former Spreydon-Cashmere Community Board researched public transport accessibility by looking at bus stop and seating locations, and travel (walking plus bus) to amenity times. The 2020 study showed that for all population groups the fastest

accessed amenity is greenspace (4 minutes), while health centres, shopping centres, banks, libraries and community centres took travel times of between 10 and 20 minutes, and travel to Christchurch Hospital took 34.5 minutes and Burwood Hospital 67.2 minutes. Environment Canterbury bus routes continue to adapt, and feedback from communities suggests there could be unmet demand for routes and stops in several locations.

The installation of cycleways, road works and under-road infrastructure repairs have been ongoing and are likely to continue in years ahead. Of note is the very high rate of cycle to work/active transport undertaken by residents, in particular from Beckenham. The Beckenham community, school and residents' group have recently worked with the Innovative Streets programme to enhance Birdwood Avenue safety and create a neighbourhood focal point. Groups along Selwyn Street also worked with the programme.

Major new housing developments are underway in the Cashmere Valley between Cracroft and Westmorland, while in the District Plan medium density development zones some original family bungalows and villas are replaced with multi-unit dwellings. Most areas have already been subject to backfill housing. The Opawaho/Heathcote River has benefitted from continued flood risk management works and riparian enhancements that improve its residential areas. Population growth was modest between 2013 and 2018, with most neighbourhoods showing an increase, the highest increase being in Huntsbury (240). Small population decreases occurred in Beckenham, St Martins, and Somerfield West.

In partnership with the Christchurch Beautifying Association, the Waihoru Spreydon-Cashmere Community Board funds and hosts Community Pride Garden Awards for residents who contribute to attractive street environments by cultivating high quality decorative gardens.

Healthy Environment

The most significant body of water in Cashmere is the spring fed Ōpāwaho /Heathcote River, and the Cashmere Stream is a major tributary. Works programmes have addressed earthquake induced changes to the river bed, as well as flood mitigation. In daily life residents take much advantage of bankside walkways and reserves, including picking up litter. Long term community based initiatives such as the Cashmere Stream Group and the Ōpāwaho Heathcote River network engage with environmental experts, decision-makers, and volunteers to address the risks of sedimentary runoff from new build locations, increase native and compatible riverside plantings, and monitor water quality and aquatic populations.

Residential areas extend into rural and agricultural lands on the Port Hills. The Port Hills Fires that occurred in February 2017 covered an area of 1,645 hectares with a perimeter of 51 kilometers. Groups such as the Port Hills Trust, along with local and central government conservation projects have mobilised hundreds of volunteers willing to assist with restoration and regeneration of vegetation destroyed by the fires.

The Port Hills attract recreational cyclists and walkers from across the city and beyond. Multiple walkways and bike tracks have been developed and expanded for example on Mount Vernon Park, Bowenvale Reserve, and Victoria Park. The Christchurch Adventure Park initially opened in December 2016, then reopened after fire damage and track rebuilding in December 2017, and has proved a popular recreation activity centre featuring mountain bike tracks, zip lines, a chair lift, and coaching lessons.

The Community Board hosts the Spreydon-Cashmere-Heathcote Sustainable and Edible Garden Awards initiative that has grown in popularity with residents and groups growing vegetable or fruit edibles, or creating innovative ways to contribute to sustainability, such as water management features, recycling aspects, or organics and permaculture.

Prosperous Economy

As at February 2021, the Cashmere Ward contained 2,544 business premises that employed a total of 4,877 staff.

The top six industry type (in order) are;

1. Rental, Hiring and Real Estate Services
2. Professional, Scientific and Technical Services
3. Construction
4. Health Care and Social Assistance
5. Financial and Insurance Services
6. Administrative and Support Services

Cashmere Ward personal incomes are the highest in the Waihoru Spreydon-Cashmere-Heathcote Community Board area. In 2018, 26.1 per cent of residents earned \$70,000 or more per year compared to 21.4 per cent in Heathcote, 13.2 per cent in Spreydon, and 16.5 per cent for Christchurch as a whole. Full and part time employment rates of 51.4 per cent and 17.2 per cent were close to those of Christchurch City as a whole.

While the Barrington Mall in adjacent Spreydon, and the St Martins Mall are key activity centres with supermarkets, small commercial clusters of restaurants and small owner operated retail outlets are found in places such as Somerfield, Thorrington, Centaurus Road, the intersection of Dyers Pass and Hackthorne Road, and the intersection of Hoon Hay Road with Cashmere Road. A larger selection of businesses operates in the area known as the Beckenham Shops on Colombo Street, which extends into South Sydenham.

Generally, residents enjoy a high quality of living, and Cashmere residents who are employed, constitute a relatively highly skilled and educated workforce. Retail and hospitality businesses are reasonably accessible to all neighbourhoods, and businesses frequently contribute donated goods or time to community projects. Residents and organisations in Cashmere take regular opportunities to identify and discuss local infrastructure needs or changes with elected members, particularly roads and traffic management matters that challenge safe passage to work, education, or amenities.

Current Community Issues

Issue	Progress to date / outcomes
<p>Ōpāwaho/Heathcote River: The quality of the river water and adjacent land, affecting the sustainability of plant and animal biodiversity.</p>	<p><u>February 2021</u></p> <ul style="list-style-type: none"> The Ōpāwaho/Heathcote River Network is a key community based coordination and promotion group that works with local and central government organisations as well as local volunteers towards enhanced water quality and indigenous bio-diversity. Resident participation in the annual Mother of All Clean Ups on World Rivers Day is high. The Heathcote Bank Stabilisation Project is due to be completed in 2025. <p><u>February 2022</u></p> <ul style="list-style-type: none"> The annual Mother of All Clean Ups, educative World Rivers Day displays at the South Library and Service Centre, and a Matariki celebration matched with educative workshops were key contributions to awareness raising and community participation in river care supported by the Ōpāwaho /Heathcote River Network. In March the network signed up to the multi-agency Community Waterways Partnership Charter. The Cashmere Stream Group since 2010 has monitored water clarity, undertaken restorations, and advocated for the tributary to the Ōpāwaho. In August Council secured \$1.5m from the government Freshwater Improvement Fund for this project, will also apply Council funding, and has shared the concept plans with the wider community. <p><u>February 2023</u></p> <ul style="list-style-type: none"> Restoration, enhancement and voluntary kaitiakitanga initiatives and inter-group collaborations continue. One Ōpāwaho riverside reserve group working on a tiny forest concept at King George V Reserve won a regional Kumara award from Placemakers Aotearoa in 2022.
<p>Cycleway Developments: Progression of the city network roll out, in particular the Nor west Cycleway, and the inclusion of riverside routes.</p>	<p><u>February 2021</u></p> <ul style="list-style-type: none"> The Community Board has advocated for an extension to the Nor' West Arc major cycleway or for a new cycleway to Westmorland, however funding is not likely within the next several years. A Ōpāwaho/Heathcote River cycle route is pending completion of the Heathcote Bank Stabilisation Project. The Community Board has also advocated for a new cycleway connection of the Quarryman's Trail with the Barrington Mall, and for funding for the Selwyn St Masterplan that includes pedestrian and cycling safety improvements.

Issue	Progress to date / outcomes
<p><i>Cycleway Developments cont...</i></p>	<p><u>February 2022</u></p> <ul style="list-style-type: none"> • Cycleway connection with Westmorland is budgeted for 2025, and development of the Ōpāwaho/Heathcote cycleway in 2025-28. Cycle safety improvements are to be implemented on Selwyn St. <p><u>February 2023</u></p> <ul style="list-style-type: none"> • Cycleway connection with Westmorland is still budgeted for 2025, and development of the Ōpāwaho/Heathcote cycleway in 2025-28.
<p>Community Facilities: Ensuring that community managed hire spaces and greenspaces are sustainable and matched to local needs.</p>	<p><u>February 2021</u></p> <ul style="list-style-type: none"> • The Community Facilities Network Plan identified no significant gaps in built facilities for the area, although feedback indicates a scarcity of bookable venues for audiences of more than 100. • The newly opened St Martins MenZshed has been established in direct response to locally identified needs, and is intended to continue as a self-sustaining initiative where members can meet and undertake projects of personal and broader community benefit. • The Community Board travelled to Huntsbury Community Centre to meet, and took time towards understanding the building usage as well as building repair and upgrade works. • Small grants have been awarded to several facility management groups and green space volunteer groups to help initiate or celebrate community driven improvements. • The Community Board advocated for continued or expanded funding for Council community rangers to support increased interest of groups in managing or helping to maintain greenspace reserves and small parks. <p><u>February 2022</u></p> <ul style="list-style-type: none"> • Small funding contributions from the Community Board have continued towards functional enhancements to community hire facilities. Voluntary community and resident groups continue to contribute to the amenity of their neighbourhood reserves and small parks with garden working bees, and projects for items such as picnic tables or seating. • Council has budgeted \$390,000 annually for up to five years, covering more urban parks rangers and partnership coordinators to work with groups, schools, and businesses in high deprivation communities with interest in voluntary care of local greenspaces.

Issue	Progress to date / outcomes
<p><i>Community Facilities cont...</i></p>	<ul style="list-style-type: none"> • While COVID-19 related community facility closures and restrictions have been managed appropriately, longer term constraints are likely to threaten their financial sustainability, and the viability of hirers. <p><u>February 2023</u></p> <ul style="list-style-type: none"> • Council convened a meeting of the community managed facility representatives in December 2022 where discussions covered volunteering, networking and connection, fund raising and marketing. The meeting, as well as feedback until the end of January 2023 will inform the next steps of the Community Facilities Network Plan implementation. • Installation of wi-fi capacity at the St Martins Voluntary Library and Community Centre is due for completion this financial year. • The South Library and Service Centre building at 66 Colombo Street is to be rebuilt following earthquake damage, rather than repaired. Public engagement through meetings and on line feedback has been facilitated from the early stages in recognition of the high local ownership and wide user catchment of the facilities. Community workshops are planned for early 2023, and Council design decisions are due within the first half of the calendar year.
<p>Road Safety: Current and future traffic pressures affecting safety at intersections and access to Barrington Mall.</p>	<p><u>February 2021</u></p> <ul style="list-style-type: none"> • The Community Board approved safety improvements to the Barrington Mall entry/exit on Barrington St in July 2020, and completion is expected in mid-March 2021. • Traffic management and safety constructions are scheduled to begin on the Worsleys/Hoon Hay/Cashmere Road intersection in March 2021 for completion by June 2021. • Safety for Dyers Pass cycle and vehicle users is to be enhanced with road widening and three kilometres of guard rails by mid-2021. • The Community Board has also advocated for safety improvements to the Dyers Pass/Cashmere Road/Colombo St roundabout, and has heard resident concerns for pedestrian safety at the Cashmere Road / Barrington Street roundabout. <p><u>February 2022</u></p> <ul style="list-style-type: none"> • Safety improvements to the Barrington Mall were completed, and the Community Board celebrated the milestone with local community representatives who had advocated for changes over a number of years.

Issue	Progress to date / outcomes
<p><i>Road Safety Cont...</i></p> <p>Safety for children traveling to school.</p>	<ul style="list-style-type: none"> • Worsleys/Hoon Hay/ Cashmere Road intersection improvements were completed. The Dyers Pass improvements progressed with additional infrastructure strengthening required, and attention to roundabouts of concern is underway, including Wilsons Road/Centaurus Road and Barrington Street/Cashmere Road. • St Martins School and Cashmere School have identified safety issues. Consideration of bespoke solutions, the Waka Kotahi New Zealand Transport Agency Slow Speed Neighbourhoods proposals, and Innovative Street projects in Beckenham and Selwyn Street include improving cycle and pedestrian safety. <p><u>February 2023</u></p> <ul style="list-style-type: none"> • The Dyers Pass Road improvements are nearing completion as publicised traffic delays and night work continues. • Following design briefings, site visits, and community feedback, the Wilsons Road/Centaurus Road roundabout improvements were approved for implementation by the Community Board in late 2022. • The Community Board approved the project design for Barrington Street/Cashmere Road/Purau Terrace roundabout improvements in June 2022, and this work has now been completed. • Subsequent to work already done towards slow speed neighbourhoods, Waka Kotahi and local authorities are tasked with delivering safe speeds outside all schools by 2027, beginning with 80 – 120 schools by 2024. Further pedestrian safety measures were approved for Tennyson Street in 2023, in part addressing safe access to schools.
<p>Social Isolation:</p> <p>Ensuring that the risk of disconnection from others is addressed, particularly older adults.</p>	<p><u>February 2021</u></p> <ul style="list-style-type: none"> • The Spreydon-Cashmere Older Adults Network and the Age-Friendly Spreydon-Cashmere committee interact regularly with Community Board members and have initiated a transport accessibility study and a new older adults services and activities guide for the ward. • The Community Board is supporting a feasibility study for an adult playground. <p><u>February 2022</u></p> <ul style="list-style-type: none"> • Multiple submissions were made by the Age-Friendly committee to local and central government consultations on the crucial role affordable, accessible, and available public transport has to ensure social inclusion and contribution from older adults. Several locations identified by the committee are to have rest seating installed.

Issue	Progress to date / outcomes
<p><i>Social isolation cont...</i></p>	<p><u>February 2023</u></p> <ul style="list-style-type: none"> • Checks with organisations during COVID restriction periods showed that community groups were aware of and able to assist vulnerable and older neighbours, and that some reluctance to participate in groups has lingered once closer contact was permitted. • The Waihoru Spreydon-Cashmere-Heathcote Community Board has endorsed the continuation of the Age Friendly Spreydon-Cashmere Committee and its expansion to include the Heathcote Ward.
<p>Emergency Preparedness: Maintenance of local plans and groups that can respond appropriately to diverse emergencies or disruptions.</p> <p>COVID-19 impact management</p> <p>July 2022 Floods</p>	<p><u>February 2021</u></p> <ul style="list-style-type: none"> • Preparedness and residents' groups are encouraged to plan for emergencies. An information update workshop between Spreydon-Cashmere groups and Civil Defence is planned for 2021. <p><u>February 2022</u></p> <ul style="list-style-type: none"> • While an update with preparedness and resident groups remains pending, two community created emergency hubs have been maintained. The voluntary committees responsible have continued to develop activation plans and promote preparedness planning in their neighbourhoods. • The COVID-19 lockdowns initiated in March 2020 and August 2021 have meant new experience based learnings for households, community groups, businesses and agencies. A snapshot health check by Council staff of diverse groups early in the 2021 lockdown showed increased community confidence and competence to deal with the disruption, at least for the short term. Longer term, community meetings, facility use, community development initiatives, fund raising events, and public entertainment events have reduced significantly – with some amelioration through expanded use of virtual communication technologies. <p><u>February 2023</u></p> <ul style="list-style-type: none"> • Storm floods in Canterbury in July 2022 were lessened in impact by the use of storm water basins in the Ōpāwaho /Heathcote catchment storing some 1.5 million cubic metres of storm water. House floor levels were not breached. • Local staff provided real time intelligence reports to Civil Defence during the July storm, and also to report back on the effects on neighbourhoods of a large car wreck yard fire in Opawa in August 2022. • Community Resilience Coordinators have connected with local preparedness groups such as the Cashmere Emergency Preparedness Team and the Somerfield Community Emergency Response Team to advise on their role in relation to emergency support hubs as well as their wider role with Civil Defence.

Issue	Progress to date / outcomes
<p>Climate Change: Meeting the challenge of climate change through every means possible is a Council strategic priority.</p>	<p><u>February 2022</u></p> <ul style="list-style-type: none"> Mitigation measures to protect against the Ōpāwaho/Heathcote River flooding have been of benefit during two heavy rainfall alerts. Residents have identified the importance of the retention and provision of tree canopy cover on intensified residential properties to maintain carbon absorption, reduce concrete surface contributions to global warming, provide shelter, and support mental wellbeing. Council has approved a Climate Change Strategy for which the Community Board provided a submission. <p><u>February 2023</u></p> <ul style="list-style-type: none"> Port Hills and Ōpāwaho river bank regeneration continues at pace through multiple projects, including collaborations between volunteers, community organisations, and Council community rangers. The final phase of flood retention basins and dam construction work in the Cashmere Valley is due to be completed in September 2023. When finished in 2024, the Heathcote catchment storage will reach 2 million cubic metres.
<p>Residential Intensification: Increased concern from residents and their associations about new and accelerated residential developments.</p>	<p><u>February 2022</u></p> <ul style="list-style-type: none"> Individual residents and resident groups have presented to the Community Board about negative impacts of in particular high rise residential dwellings and policy changes. Community Board members have advocated for tree protections, and requested Government policy consider unique factors in hillside neighbourhoods. <p><u>February 2023</u></p> <ul style="list-style-type: none"> Concerns about the impacts of new government housing development policies remain. Government has appointed a representative to work with Council on its intensification plan.