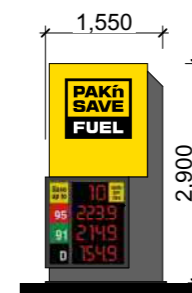


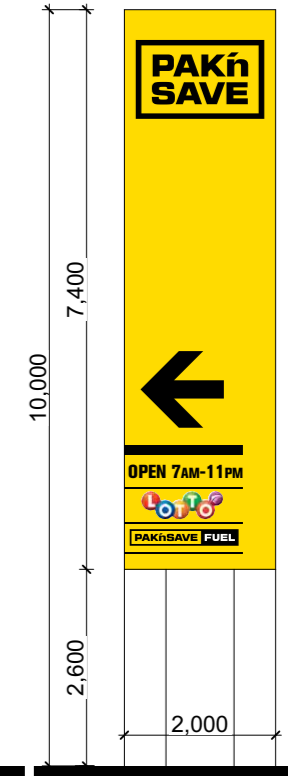


adjust existing garden and carparking to suit new pedestrian link

walkway under canopy

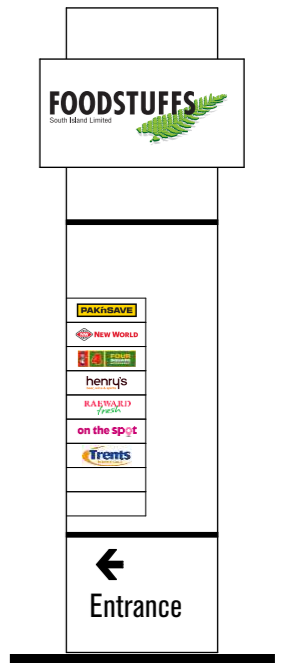


proposed PAK'nSAVE fuel sign



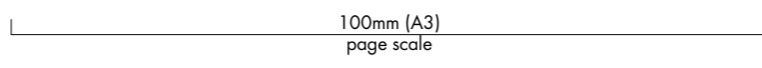
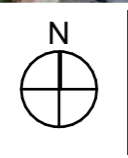
proposed PAK'nSAVE pylon sign

Main panel	Aluminium Composite Panel outer skin over steel frame in PAK'n SAVE Yellow
Structure	Aluminium Composite Panel outer skin over steel frame in ALUMINIUM
Graphics	Black computer cut vinyl lettering and directional arrow
Font	Akzidenz Grotesk Bold Condensed upper case
Lotto & Fuel	Digitally printed vinyl
Lighting	as per lighting plan (Pedersen Read)



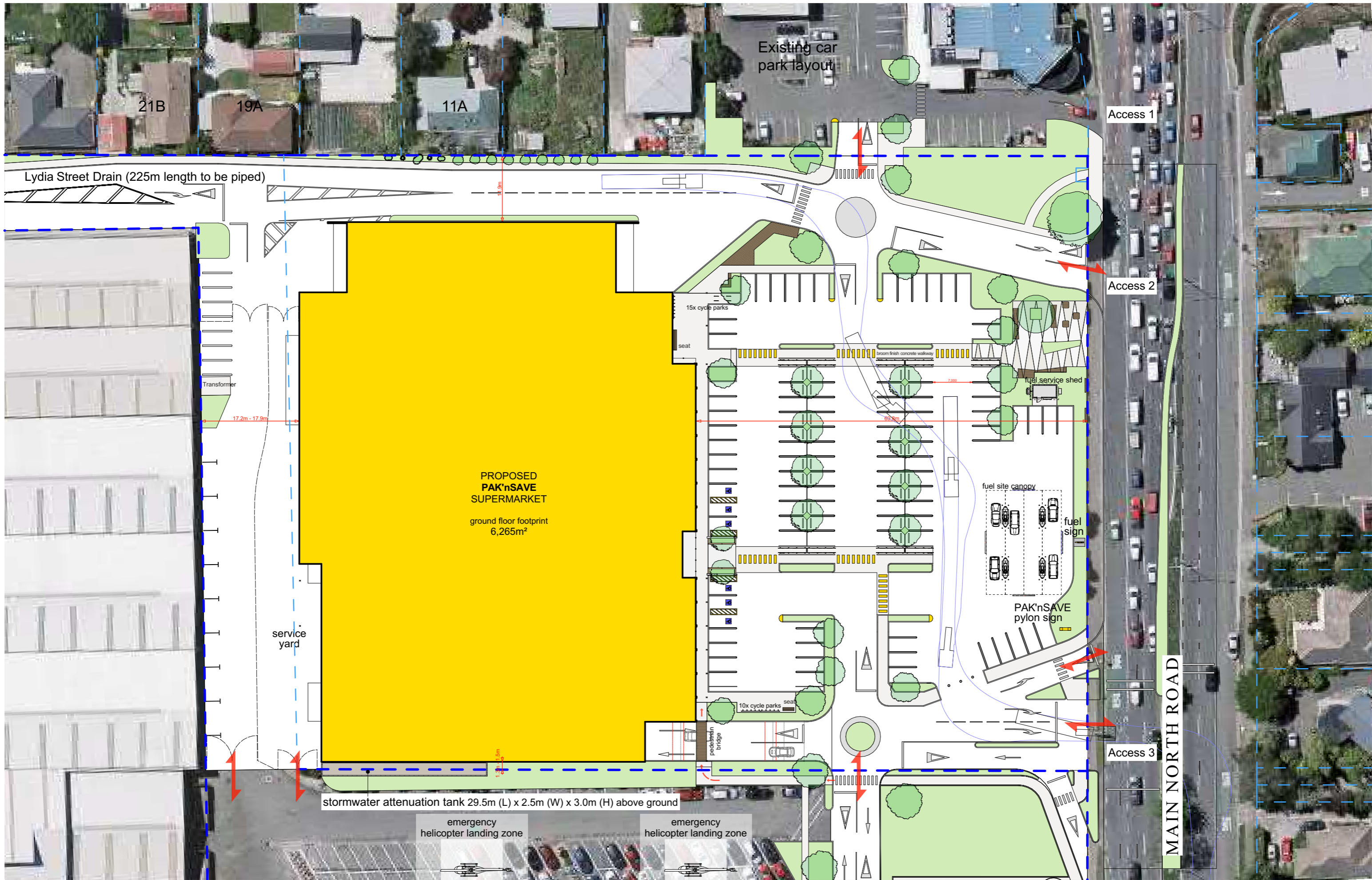
existing Foodstuffs South Island sign relocated

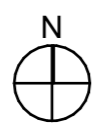
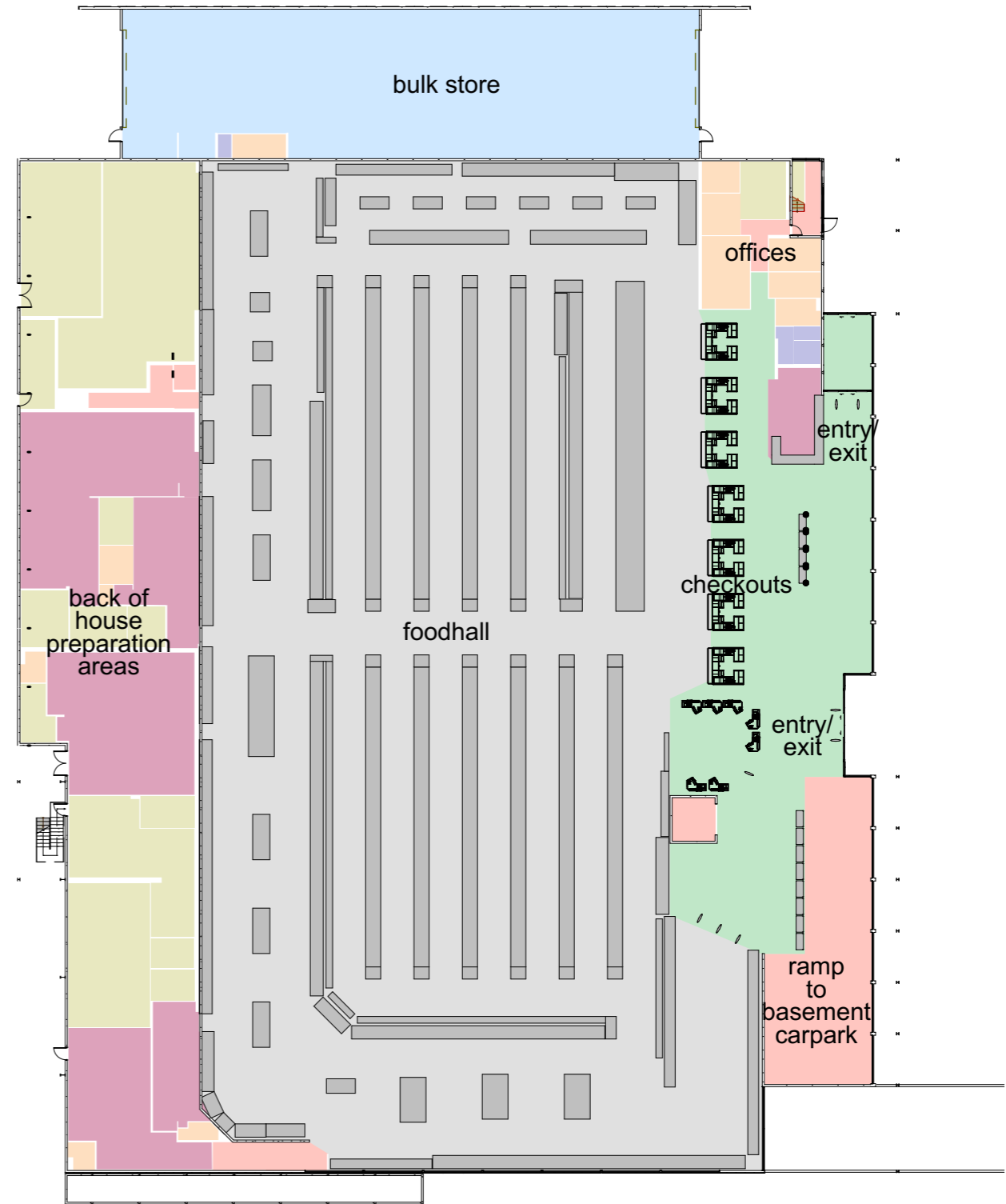
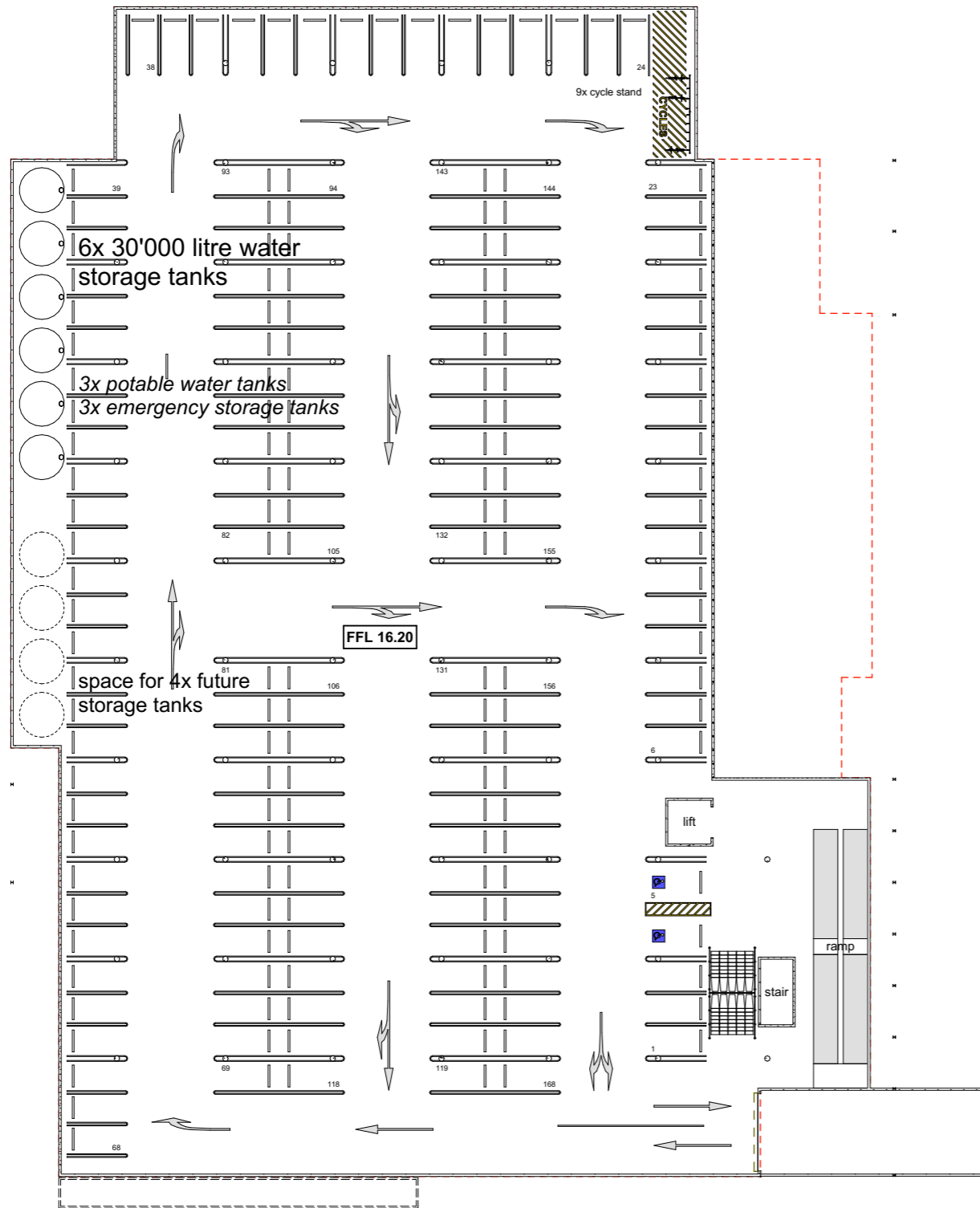
PAPANUI PAK'nSAVE
 location plan
 scale 1:1250 (A3)
 project number 5544
 printed 19/12/2019 1:17 PM
 status **RESOURCE CONSENT**



Christchurch City Council
 RMA/2018/2029
 Approved Resource Consent Plan
 31/01/2020 Harris, Nathan

McCoyWIXON ARCHITECTS
 242 Stuart St, PO Box 5436 DUNEDIN 03 477 2030
 architects@mccoywixon.co.nz mccooywixon.co.nz **RCE01**
 rev.

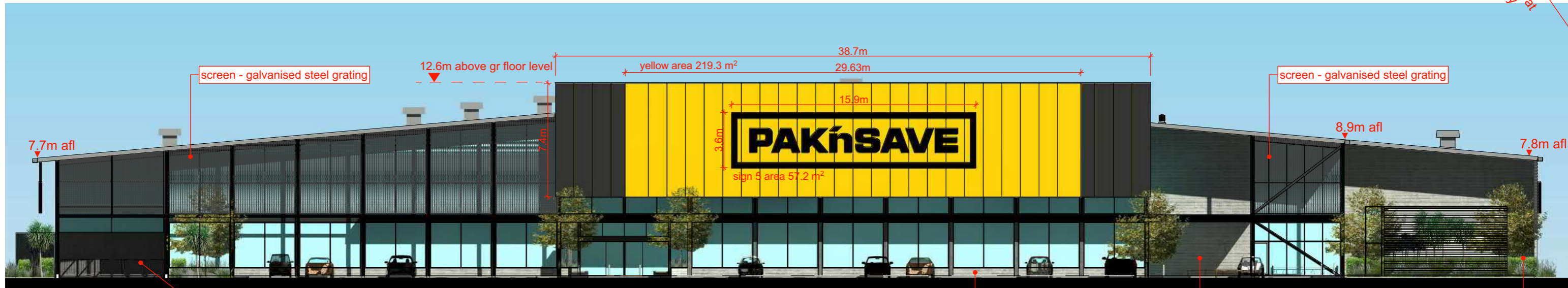






perspective elevation east

55° recession
plane angle
2.3m above
ground level at
boundary



elevation east
scale 1:250



PAPANUI PAK'nSAVE
 north elevation
 scale 1:250 (A3)
 project number 5544
 printed 19/12/2019 1:17 PM
 status **RESOURCE CONSENT**

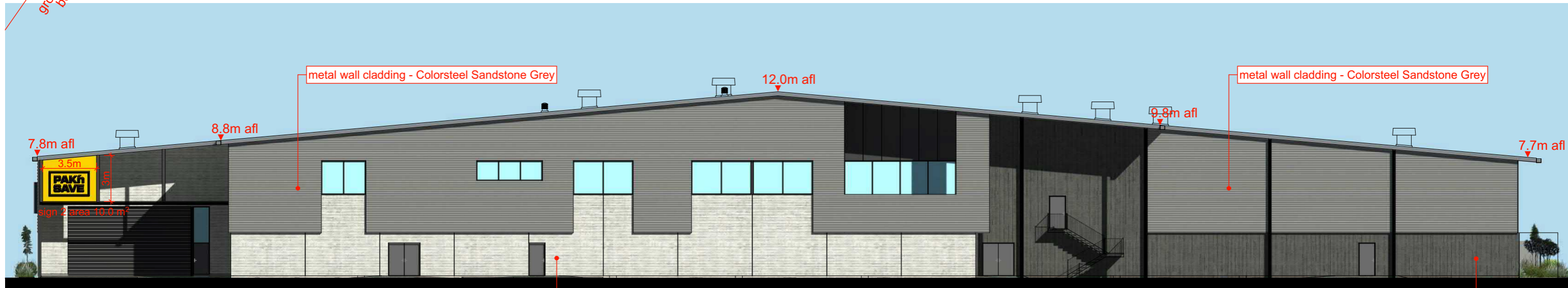
100mm (A3)
 page scale

McCOY WIXON
ARCHITECTS
 242 Stuart St, PO Box 5436 DUNEDIN
 T 03 477 2030
 E architects@mccoywixon.co.nz
 W mccoywixon.co.nz
RCe05
 REV.



perspective elevation west

55° recession
plane angle
2.3m above
ground level at
boundary



elevation west
scale 1:250

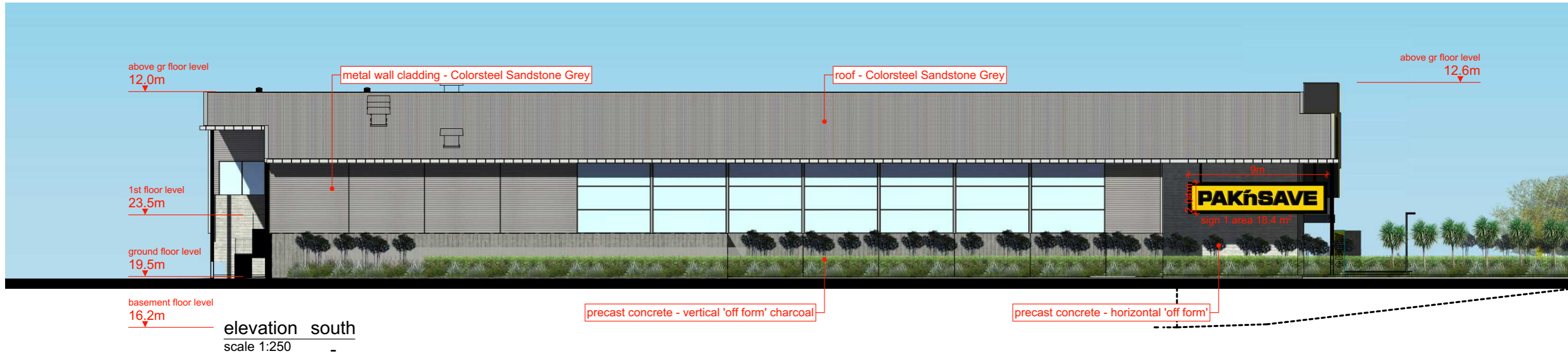
PAPANUI PAK'nSAVE
west elevation
scale 1:250 (A3)
project number 5544
printed 19/12/2019 1:17 PM
status **RESOURCE CONSENT**

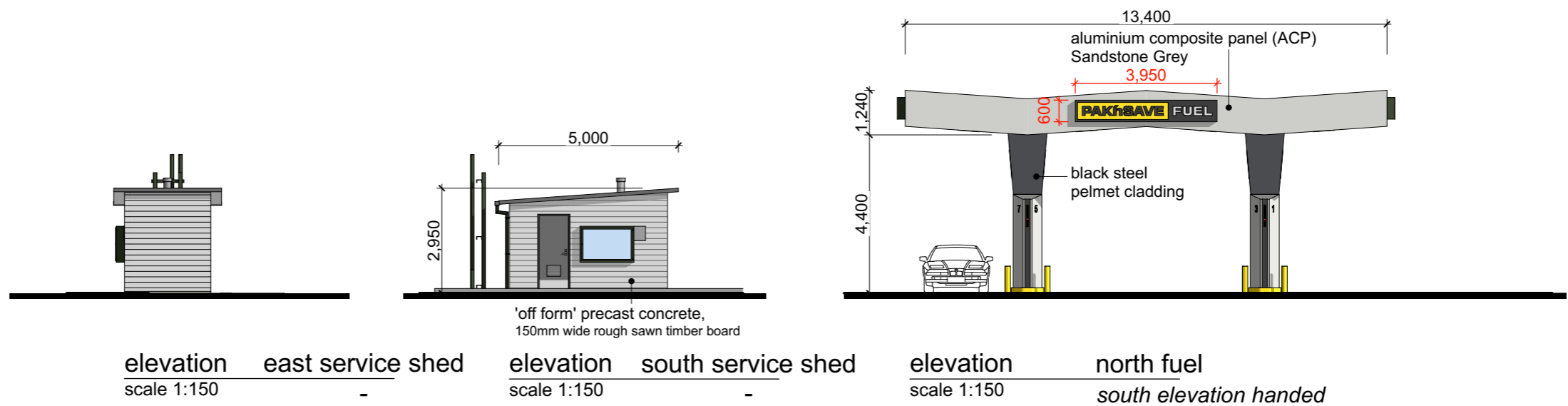
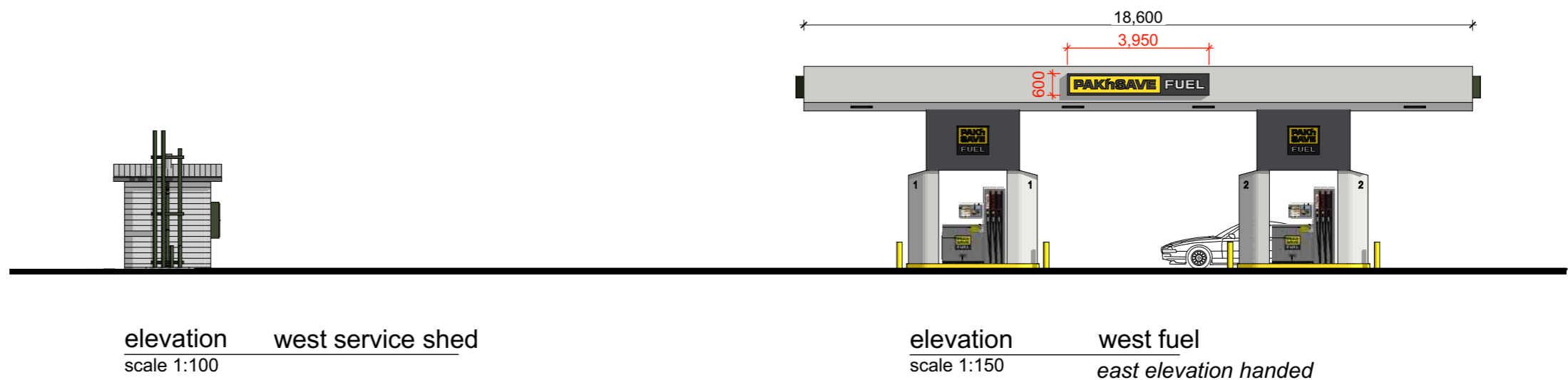
100mm (A3)
page scale

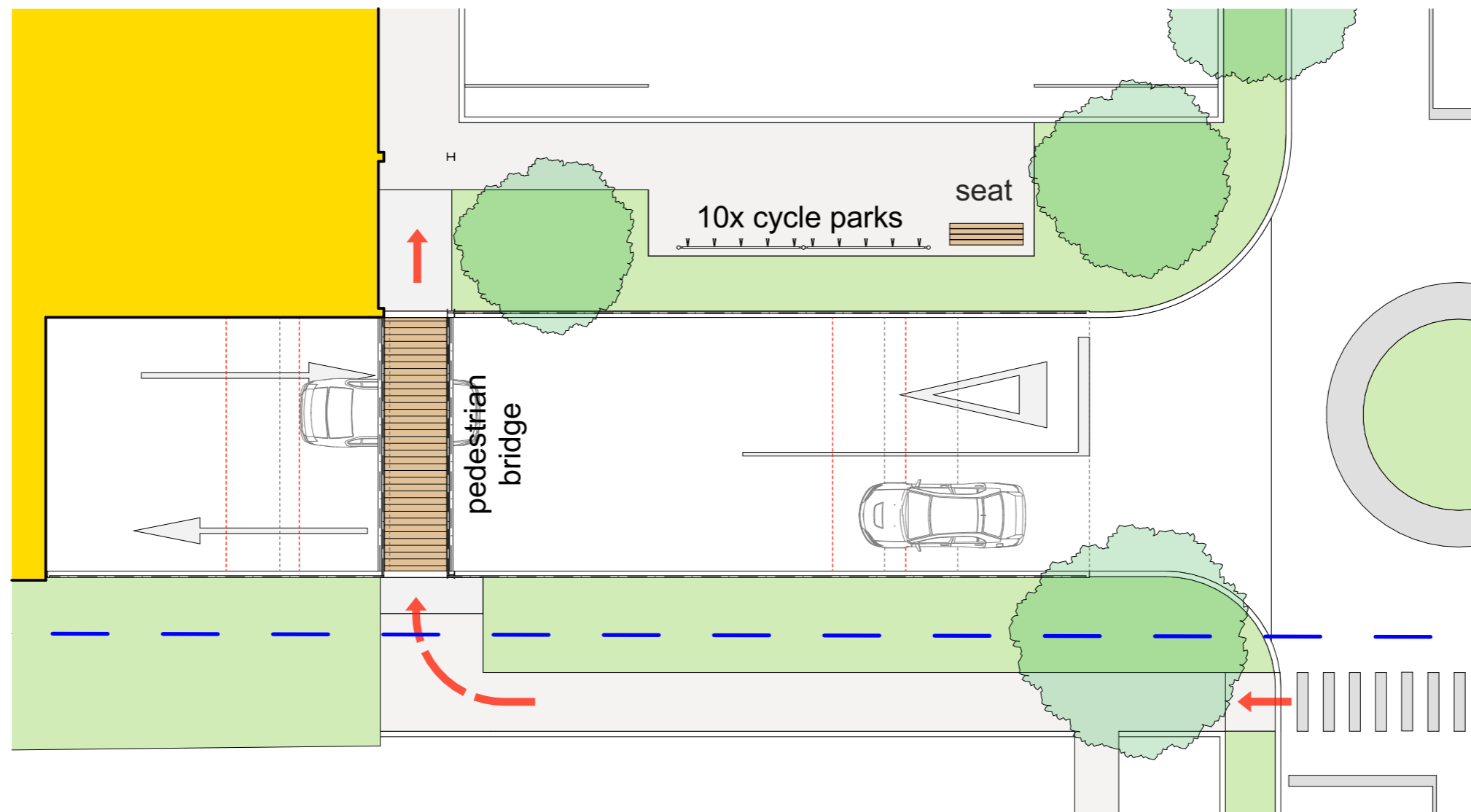
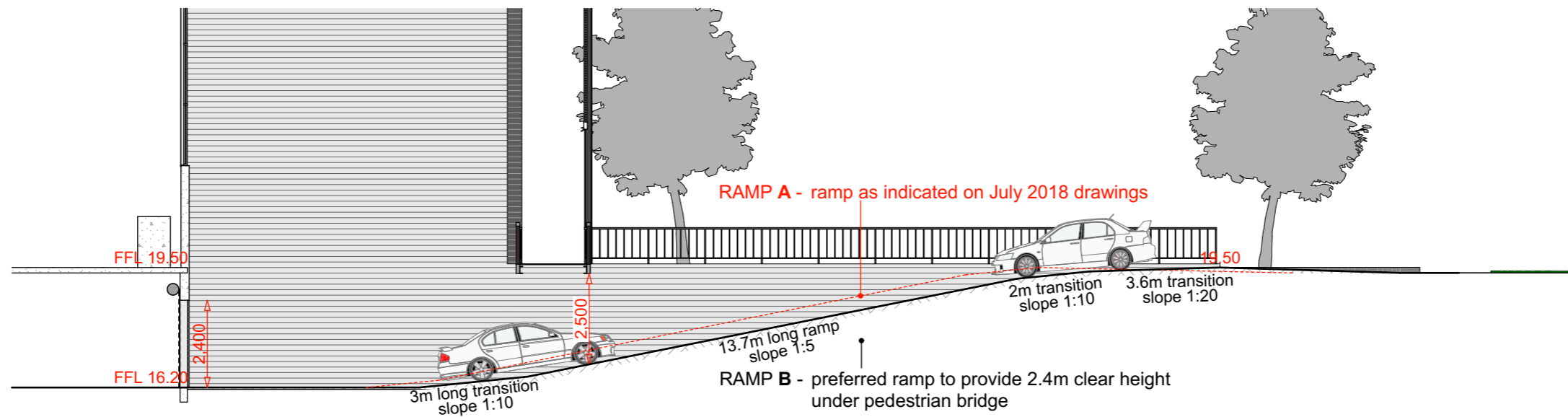
McCOY WIXON
ARCHITECTS
242 Stuart St, PO Box 5436 DUNEDIN
T 03 477 2030
E architects@mccoywixon.co.nz
W mccoywixon.co.nz
RCe06
REV.

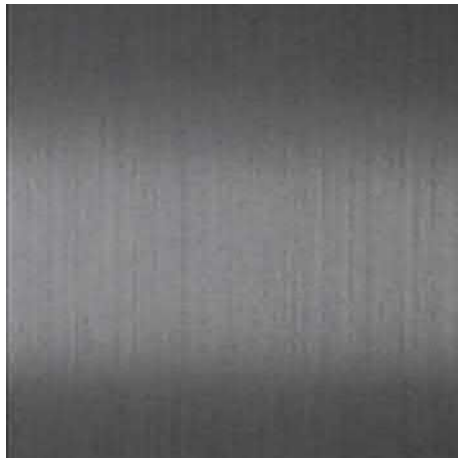


perspective elevation south

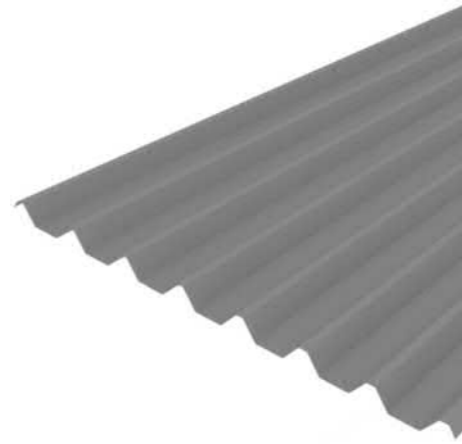








cladding either side of fascia signage
Dark Grey



trapezoidal metal cladding
Sandstone Grey



horizontal 'trapezoidal profile' precast concrete
Sandstone Grey



metal grating screen
galvanised



Sandstone Grey



PAK'n SAVE Yellow



horizontal 'off the form' precast concrete
natural



vertical 'off the form' precast concrete
charcoal

ISSUE	DATE	STATUS
O	23/07/18	RESOURCE CONSENT
A	16/04/19	INTERNAL REVIEW
B	07/05/19	INTERNAL REVIEW
C	16/05/19	INTERNAL REVIEW
D	20/05/19	FOR RFI
E	07/06/19	FOR RFI
F	25/06/19	FOR RFI
G	14/11/19	FOR HEARING
H	29/11/19	FOR HEARING
I	18/12/19	FOR POST HEARING

LEGEND

- Cadastral Boundary
- Brushed concrete paving
Insitu concrete with brushed finish
- Garden bed
Low native shrub and groundcover planting. Refer to indicative species list on Site Plan L1.1
- Hedge
Refer to indicative species list
- Carpark Tree (deciduous + exotic)
With stratavault tree pit
- Frontage tree
Upright Tulip (Liriodendron tulipifera fastigiata)
- Existing Median Trees
- Proposed Median Trees to be Removed
- Lancewood and Cabbage Tree



- Existing boxed drain along residential boundary to be piped (refer to civil drawings) to allow for new pedestrian path and acoustic timber fencing with native climbers, trees, hedging and low shrubs
- Existing healthy landscaping to be retained between retail site and residential property. Supplement with new planting where required
- Frontage planting upgraded to complement neighbouring site and provide a greater level of amenity to existing site
- New access between existing retail site and proposed supermarket site
- Upgrade access to commercial/retail site including new frontage planting that defines entrance and references planting throughout neighbouring supermarket site
- Existing *Tilia* tree to be retained as a site landmark
- Existing site access to be altered, including a new signalled intersection
- New lawn area
- Alternative location for bus stop and shelter
- New site entrance to office carparking with relocated signage and gated access. Enhance entrance with new tree, shrub and groundcover planting
- After hours access only

SUPERMARKET
 REFER TO LANDSCAPE SITE PLAN ON L1.1

INDICATIVE SPECIES LIST

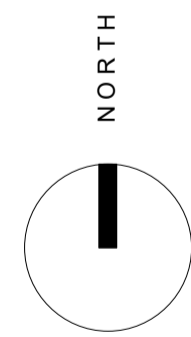
Carparking and Street Frontage Trees
Suggested species to include:
 Alnus cordata
 Cordyline australis
 Platanus 'Autumn Glory'
 Pseudopanax spp.
 Upright Tulip *Liriodendron tulipifera fastigiata*

Amenity / Ornamental Planting
Suggested species to include:
 Carex testacea
 Chionochloa flavicans
 Hebe spp.
 Ligularia reniformis
 Lomandra 'Tanika'
 Lophomyrtus 'Red dragon'
 Muehlenbeckia astonii
 Penstemon spp.
 Poa cita
 Pittosporum spp.
 Phormium 'Green Dwarf'
 Phormium 'Dark Delight'
 Rudbeckia spp.
 Griselinia 'Broadway Mint'
 Corokia 'Gearty's Green'
 Acaena inermis 'Purpurea'
 Coprosma kirkii
 Coprosma acerosa 'Hawera'
 Muehlenbeckia axillaris
 Parakebe 'Snowcap'
 Pimelea prostrata
 Thymus spp.

Rain Garden Planting
Suggested species to include:
 Apodasmia similis
 Arthropodium cirratum
 Astelia 'Westland' and 'Silver Spear'
 Carex virgata
 Chionochloa flavicans
 Coprosma spp.
 Dianella spp.
 Muehlenbeckia axillaris
 Pittosporum spp.
 Acaena inermis 'Purpurea'

Habitat Enhancement Planting
Suggested species to include:
 Cordyline australis
 Pseudopanax spp.
 Astelia 'Westland' and 'Silver Spear'
 Arthropodium spp.
 Coprosma spp.
 Muehlenbeckia astonii
 Phormium 'Green Dwarf'
 Phormium 'Dark Delight'
 Griselinia 'Broadway Mint'

Lydia Street Tree Planting
Suggested species to include (amenity / ornamental planting):
 Parsonsia heterophylla
 Alnus jorullensis

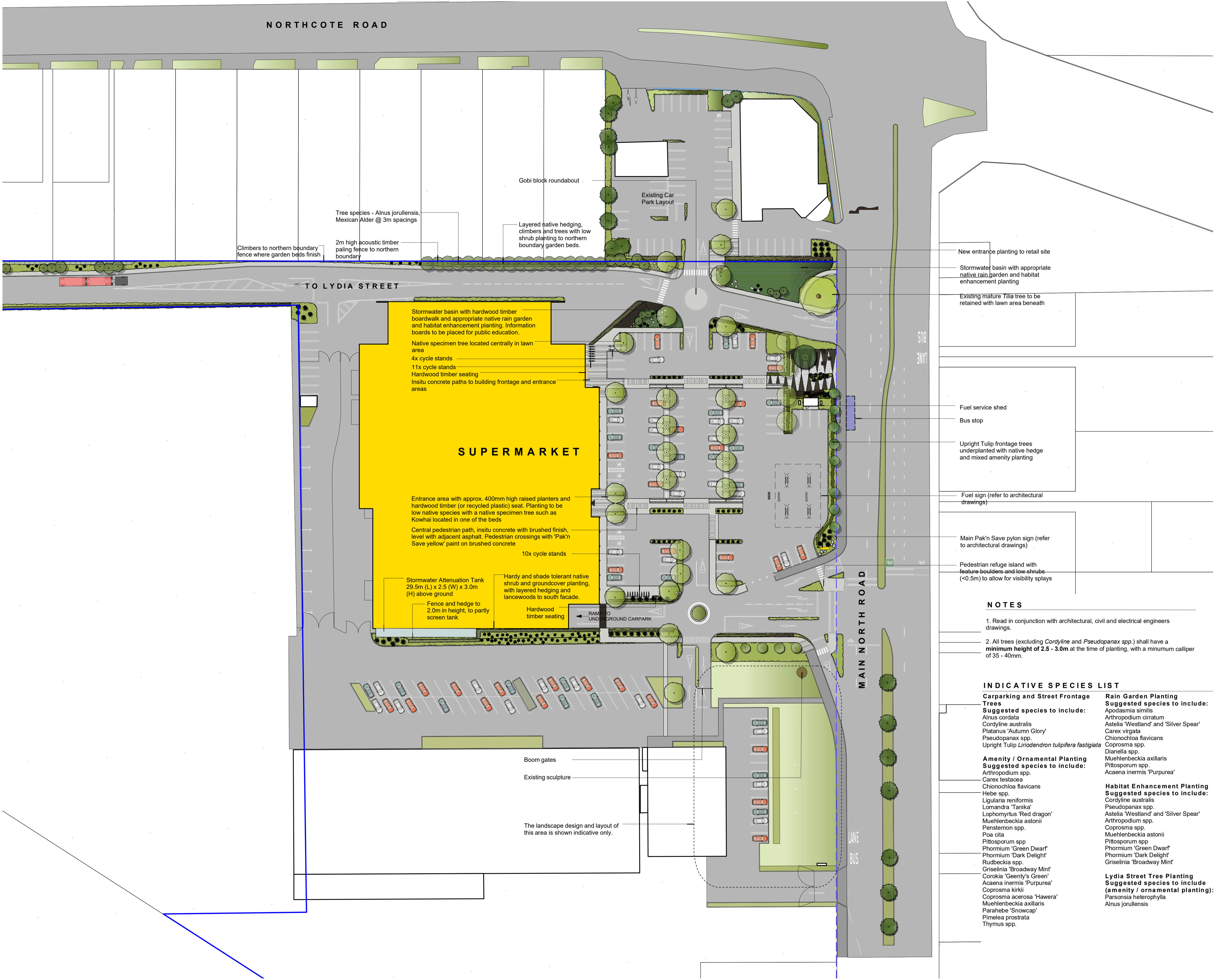


rough & milne landscape architects
 Level 2, 69 Cambridge Terrace
 PO Box 3784, Christchurch 8140
 New Zealand
 Tel +64 3 366 3268
 Fax +64 3 377 8287
 info@roughandmilne.co.nz

APPLICATION SITE LANDSCAPE MASTERPLAN
PAPANUI PAK'N SAVE
MAIN NORTH ROAD
CHRISTCHURCH

JOB No.	17136
SCALE	1:750 @ A1
DATE	28/11/19
DESIGNED	SS
DRAWN	SS / AM
CHECKED	TM
STATUS	FOR POST HEARING
DRAWING No.	REVISION
RC 1.0	H
SERIES	
1 of 2	

ISSUE	DATE	STATUS
O	23/07/18	FOR RESOURCE CONSENT
A	05/04/19	CLIENT REVIEW
B	16/04/19	INTERNAL REVIEW
C	07/05/19	INTERNAL REVIEW
D	16/05/19	INTERNAL REVIEW
E	30/05/19	RFINAL
F	14/11/19	FOR HEARING
G	29/11/19	FOR HEARING
H	18/12/19	FOR POST HEARING



- LEGEND**
- Cadastral Boundary**
 - Brushed concrete paving**
Insitu concrete with brushed finish
 - Garden bed**
Low native shrub and groundcover planting. Refer to indicative species list
 - Raingarden**
Low native shrubs and grass planting. Refer to indicative species list
 - Hedge**
To 1m high unless noted otherwise. Refer to indicative species list
 - Carpark Tree (deciduous + exotic)**
With stratavault tree pit
 - Frontage tree**
Upright Tulip (*Liriodendron tulipifera fastigiata*)
 - Lancewood and Cabbage Tree**
 - Landscape rocks**
800-1200mm dia boulders overlapped to create ecological habitat pockets
 - Timber seating**
400mm hardwood timber seating
 - Signage**
Refer to architects drawings
 - Cycle stand**
Type D - Street Furniture NZ
 - Wheelstop (where required)**
Recycled plastic wheelstop with reflectors (ex. Metal Art Ltd), colour black. Disabled parks with disabled symbol routed 100m from ends, painted white

- NOTES**
1. Read in conjunction with architectural, civil and electrical engineers drawings.
 2. All trees (excluding *Cordyline* and *Pseudopanax spp.*) shall have a minimum height of 2.5 - 3.0m at the time of planting, with a minimum calliper of 35 - 40mm.

- INDICATIVE SPECIES LIST**
- | | |
|--|--|
| <p>Carparking and Street Frontage Trees
 Suggested species to include:
 <i>Alnus cordata</i>
 <i>Cordyline australis</i>
 <i>Platanus 'Autumn Glory'</i>
 <i>Pseudopanax spp.</i>
 Upright Tulip <i>Liriodendron tulipifera fastigiata</i></p> | <p>Rain Garden Planting
 Suggested species to include:
 <i>Apodasmia similis</i>
 <i>Arthropodium cirratum</i>
 Astelia 'Westland' and 'Silver Spear'
 <i>Carex virgata</i>
 <i>Chionochloa flavicans</i>
 <i>Coprosma spp.</i>
 <i>Dianella spp.</i>
 <i>Muehlenbeckia axillaris</i>
 <i>Pittosporum spp.</i>
 Acaena inermis 'Purpurea'</p> |
| <p>Amenity / Ornamental Planting
 Suggested species to include:
 <i>Arthropodium spp.</i>
 <i>Carex testacea</i>
 <i>Chionochloa flavicans</i>
 Hebe spp.
 <i>Ligularia reniformis</i>
 Lomandra 'Tanika'
 Lophomyrtus 'Red dragon'
 <i>Muehlenbeckia astonii</i>
 Penstemon spp.
 Poa cita
 <i>Pittosporum spp.</i>
 Phormium 'Green Dwarf'
 Phormium 'Dark Delight'
 Rudbeckia spp.
 Griselinia 'Broadway Mint'
 Corokia 'Geenty's Green'
 Acaena inermis 'Purpurea'
 Coprosma kirkii
 Coprosma acerosa 'Hawera'
 <i>Muehlenbeckia axillaris</i>
 Parahebe 'Snowcap'
 Pimelea prostrata
 Thymus spp.</p> | <p>Habitat Enhancement Planting
 Suggested species to include:
 <i>Cordyline australis</i>
 <i>Pseudopanax spp.</i>
 Astelia 'Westland' and 'Silver Spear'
 <i>Arthropodium spp.</i>
 <i>Coprosma spp.</i>
 <i>Muehlenbeckia astonii</i>
 <i>Pittosporum spp.</i>
 Phormium 'Green Dwarf'
 Phormium 'Dark Delight'
 Griselinia 'Broadway Mint'</p> |
| <p>Lydia Street Tree Planting
 Suggested species to include (amenity / ornamental planting):
 Parsonsia heterophylla
 Alnus jorullensis</p> | |

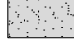









rough & milne landscape architects
 Level 2, 69 Cambridge Terrace
 PO Box 3764, Christchurch 8140
 New Zealand
 Tel +64 3 366 3268
 Fax +64 3 377 8287
 info@roughandmilne.co.nz

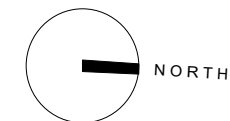
APPLICATION SITE LANDSCAPE PLAN
PAPANUI PAK'N SAVE
 MAIN NORTH ROAD
 CHRISTCHURCH

JOB No.	17136
SCALE	1:500 @ A1
DATE	29/11/19
DESIGNED	SS
DRAWN	SS / AM
CHECKED	TM
STATUS	FOR POST HEARING
DRAWING No.	REVISION
RC 1.1	1
SERIES	
2 of 2	

ISSUE	DATE	STATUS
A	18/12/19	FOR POST HEARING

LEGEND

-  In situ concrete paving with selected finish
-  Concrete segmental paving or similar
-  Shrub and groundcover planting (species to be selected from the list on sheet R.C 1.1)
-  Hedge to 1m high (species to be selected from the list on sheet R.C 1.1)
-  In-ground uplight
-  Hardwood timber seat
-  *Platanus acerifolia* (Plane Tree)
-  *Liriodendron tulipifera 'fastigiata'* (Upright Tulip Tree)
-  *Pseudopanax crassifolius* (Lancewood Tree)
-  Specimen tree species to be chosen from the following:
 - *Fraxinus excelsior 'Hamner'* (Ash Tree)
 - *Liriodendron tulipifera* (Tulip Tree)
 - *Platanus orientalis* (Oriental Plane)
 - *Tilia cordata* (Small Leaved Lime Tree)



rough & milne landscape architects

CHRISTCHURCH +64 3 366 3268
 WANAKA +64 3 974 7940
 AUCKLAND +64 27 642 3342
www.roughandmilne.co.nz info@roughandmilne.co.nz

**PLAZA LANDSCAPE PLAN
PAPANUI PAK'N SAVE
MAIN NORTH ROAD
CHRISTCHURCH**

JOB No.	17136
SCALE	1:150@A3
DATE	04/12/2019
DESIGNED	TM/SS
DRAWN	SS
CHECKED	TM
STATUS	FOR POST HEARING

DRAWING No.	REVISION
L1.1A	A
SERIES	
3 of 3	

