

ISSUE	DATE	STATUS
O	23/07/18	FOR RESOURCE CONSENT
A	05/04/19	CLIENT REVIEW
B	16/04/19	INTERNAL REVIEW
C	07/05/19	INTERNAL REVIEW
D	16/05/19	INTERNAL REVIEW
E	30/05/19	RFI FINAL
F	14/11/19	FOR HEARING
G	29/11/19	FOR HEARING

LEGEND

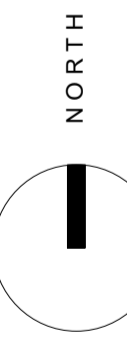
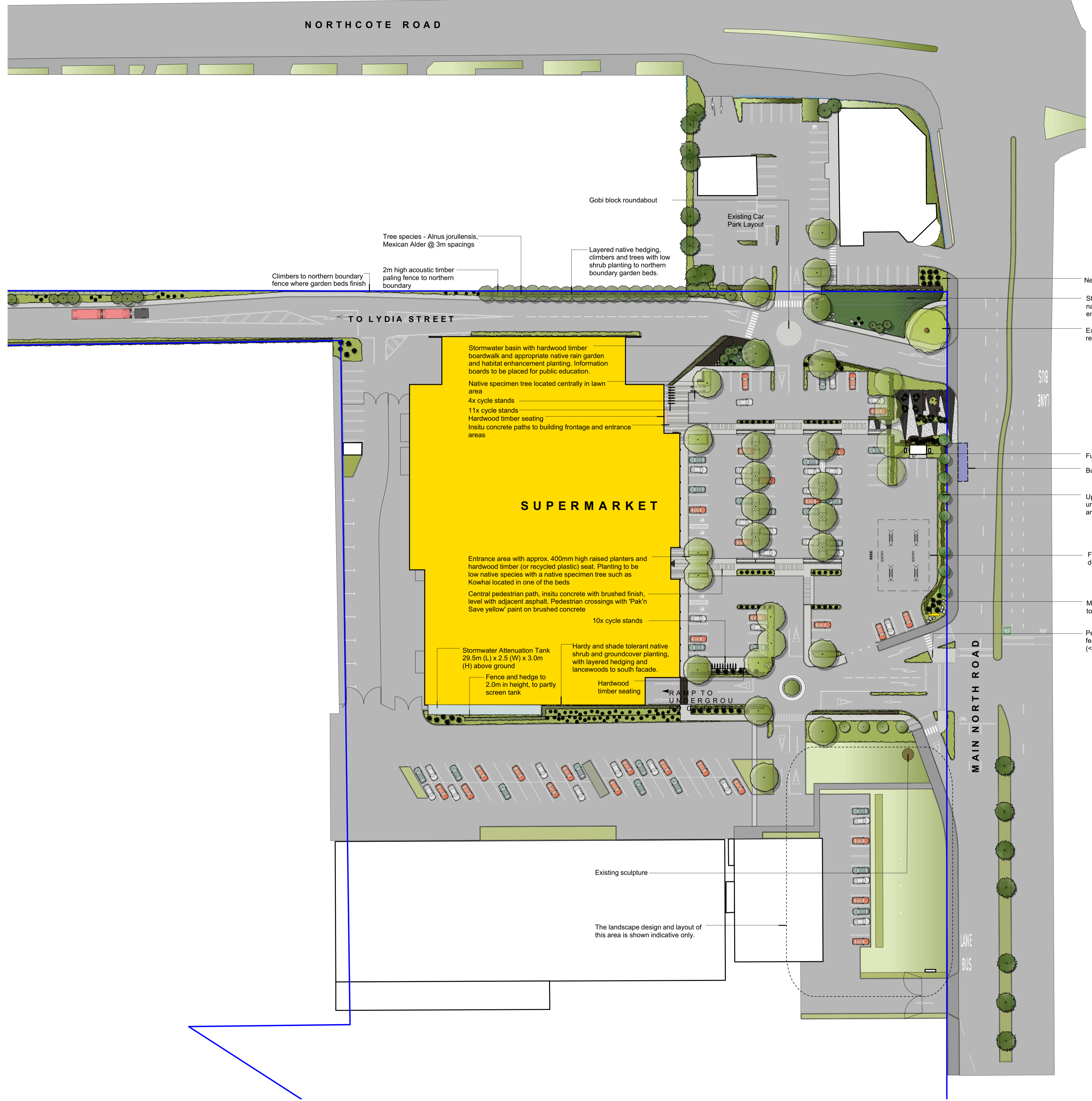
- Cadastral Boundary
- Brushed concrete paving
Insitu concrete with brushed finish
- Garden bed
Low native shrub and groundcover planting. Refer to indicative species list
- Raingarden
Low native shrubs and grass planting. Refer to indicative species list
- Hedge
To 1m high unless noted otherwise. Refer to indicative species list
- Carpark Tree (deciduous + exotic)
With stratavault tree pit
- Frontage tree
Upright Tulip (*Liriodendron tulipifera fastigiata*)
- Lancewood and Cabbage Tree
- Landscape rocks
800-1200mm dia boulders overlapped to create ecological habitat pockets
- Timber seating
400mm hardwood timber seating
- Signage
Refer to architects drawings
- Cycle stand
Type D - Street Furniture NZ
- Wheelstop (where required)
Recycled plastic wheelstop with reflectors (ex. Metal Art Ltd), colour black. Disabled parks with disabled symbol routed 100m from ends, painted white

NOTES

1. Read in conjunction with architectural, civil and electrical engineers drawings.
2. All trees (excluding *Cordyline* and *Pseudopanax spp.*) shall have a minimum height of 2.5 - 3.0m at the time of planting, with a minimum calliper of 35 - 40mm.

INDICATIVE SPECIES LIST

- | | |
|--|--|
| <p>Carparking and Street Frontage Trees
 Suggested species to include:
 Alnus cordata
 Cordyline australis
 Platanus 'Autumn Glory'
 Pseudopanax spp.
 Upright Tulip <i>Liriodendron tulipifera fastigiata</i></p> | <p>Rain Garden Planting
 Suggested species to include:
 Apodasmia similis
 Arthropodium cirratum
 Astelia 'Westland' and 'Silver Spear'
 Carex virgata
 Chionochloa flavicans
 Coprosma spp.
 Dianella spp.
 Muehlenbeckia axillaris
 Pittosporum spp.
 Acaena inermis 'Purpurea'</p> |
| <p>Amenity / Ornamental Planting
 Suggested species to include:
 Carex testacea
 Chionochloa flavicans
 Hebe spp.
 Ligularia reniformis
 Lomandra 'Tanika'
 Lophomyrtus 'Red dragon'
 Muehlenbeckia astonii
 Penstemon spp.
 Poa cita
 Pittosporum spp.
 Phormium 'Green Dwarf'
 Phormium 'Dark Delight'
 Rudbeckia spp.
 Griselinia 'Broadway Mint'
 Corokia 'Geenty's Green'
 Acaena inermis 'Purpurea'
 Coprosma kirkii
 Coprosma acerosa 'Hawera'
 Muehlenbeckia axillaris
 Parahebe 'Snowcap'
 Pimelea prostrata
 Thymus spp.</p> | <p>Habitat Enhancement Planting
 Suggested species to include:
 Cordyline australis
 Pseudopanax spp.
 Astelia 'Westland' and 'Silver Spear'
 Arthropodium spp.
 Coprosma spp.
 Muehlenbeckia astonii
 Pittosporum spp.
 Phormium 'Green Dwarf'
 Phormium 'Dark Delight'
 Griselinia 'Broadway Mint'</p> |
| <p>Lydia Street Tree Planting
 Suggested species to include (amenity / ornamental planting):
 Parsonsia heterophylla
 Alnus jorullensis</p> | |



rough & milne landscape architects

Level 2, 69 Cambridge Terrace
 PO Box 3764, Christchurch 8140
 New Zealand
 Tel +64 3 366 3268
 Fax +64 3 377 8287
 info@roughandmilne.co.nz

APPLICATION SITE LANDSCAPE PLAN

PAPANUI PAK'N SAVE
 MAIN NORTH ROAD
 CHRISTCHURCH

JOB No.	17136
SCALE	1:500 @ A1
DATE	29/11/19
DESIGNED	SS
DRAWN	SS / AM
CHECKED	TM
STATUS	FOR HEARING
DRAWING No.	REVISION
RC 1.1	G
SERIES	
2 of 2	