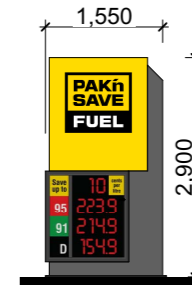


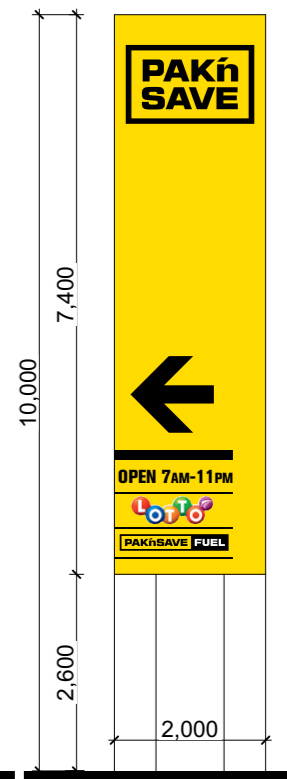


adjust existing garden and carparking to suit new pedestrian link

walkway under canopy

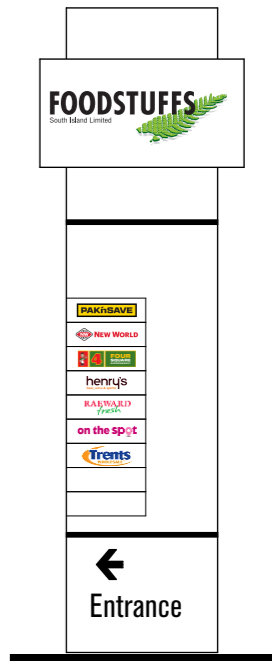


proposed PAK'nSAVE fuel sign



proposed PAK'nSAVE pylon sign

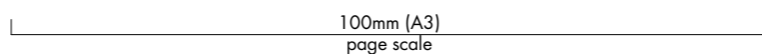
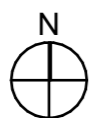
- Main panel Aluminium Composite Panel outer skin over steel frame in PAK'nSAVE Yellow
- Structure Aluminium Composite Panel outer skin over steel frame in ALUMINIUM
- Graphics Black computer cut vinyl lettering and directional arrow
- Font Akzidenz Grotesk Bold Condensed upper case
- Lotto & Fuel Digitally printed vinyl
- Lighting as per lighting plan (Pedersen Read)



existing Foodstuffs South Island sign relocated

**PAPANUI PAK'nSAVE**

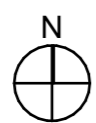
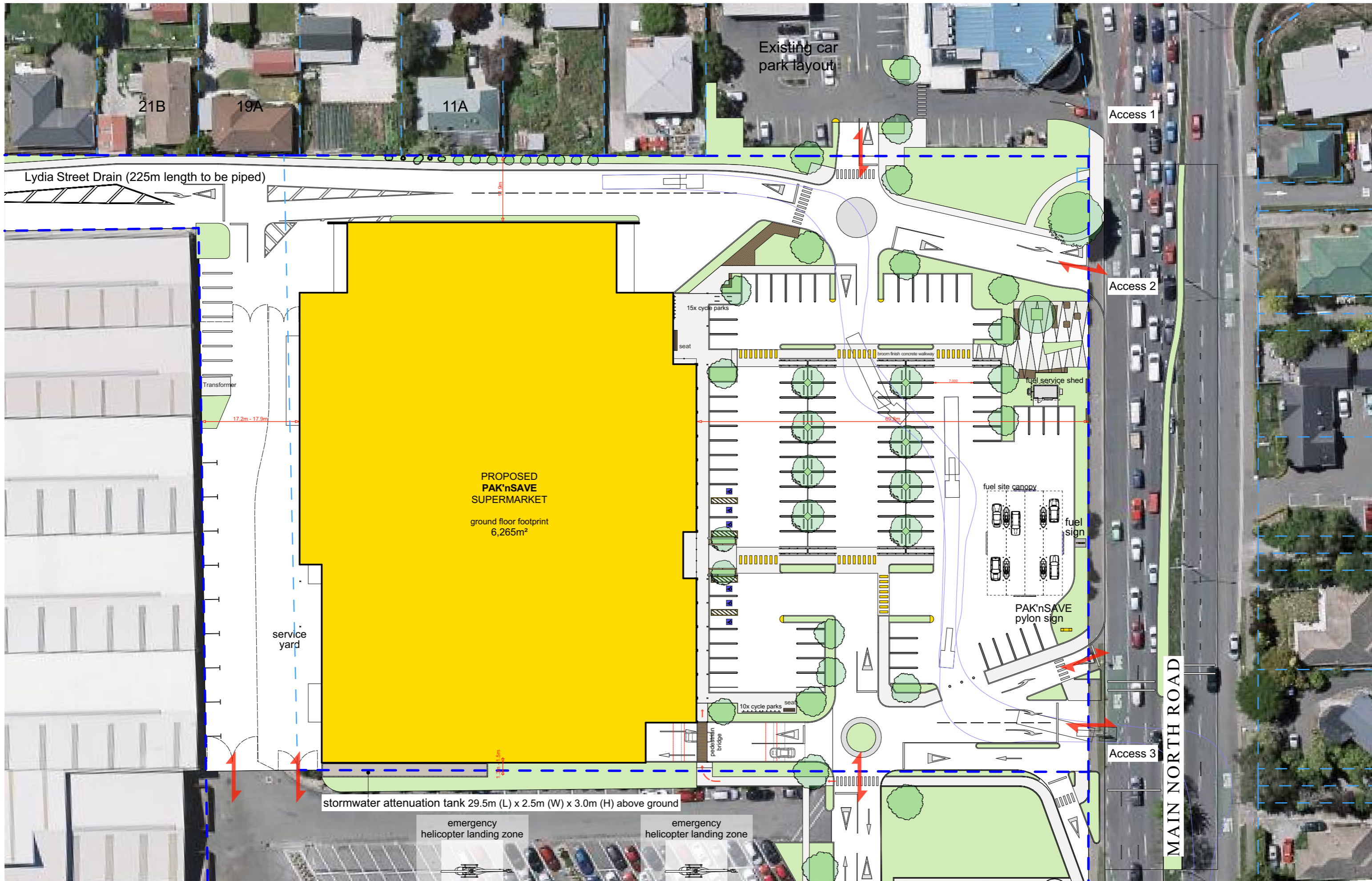
location plan  
 scale 1:1250 (A3)  
 project number 5544  
 printed 19/12/2019 1:17 PM  
 status **RESOURCE CONSENT**

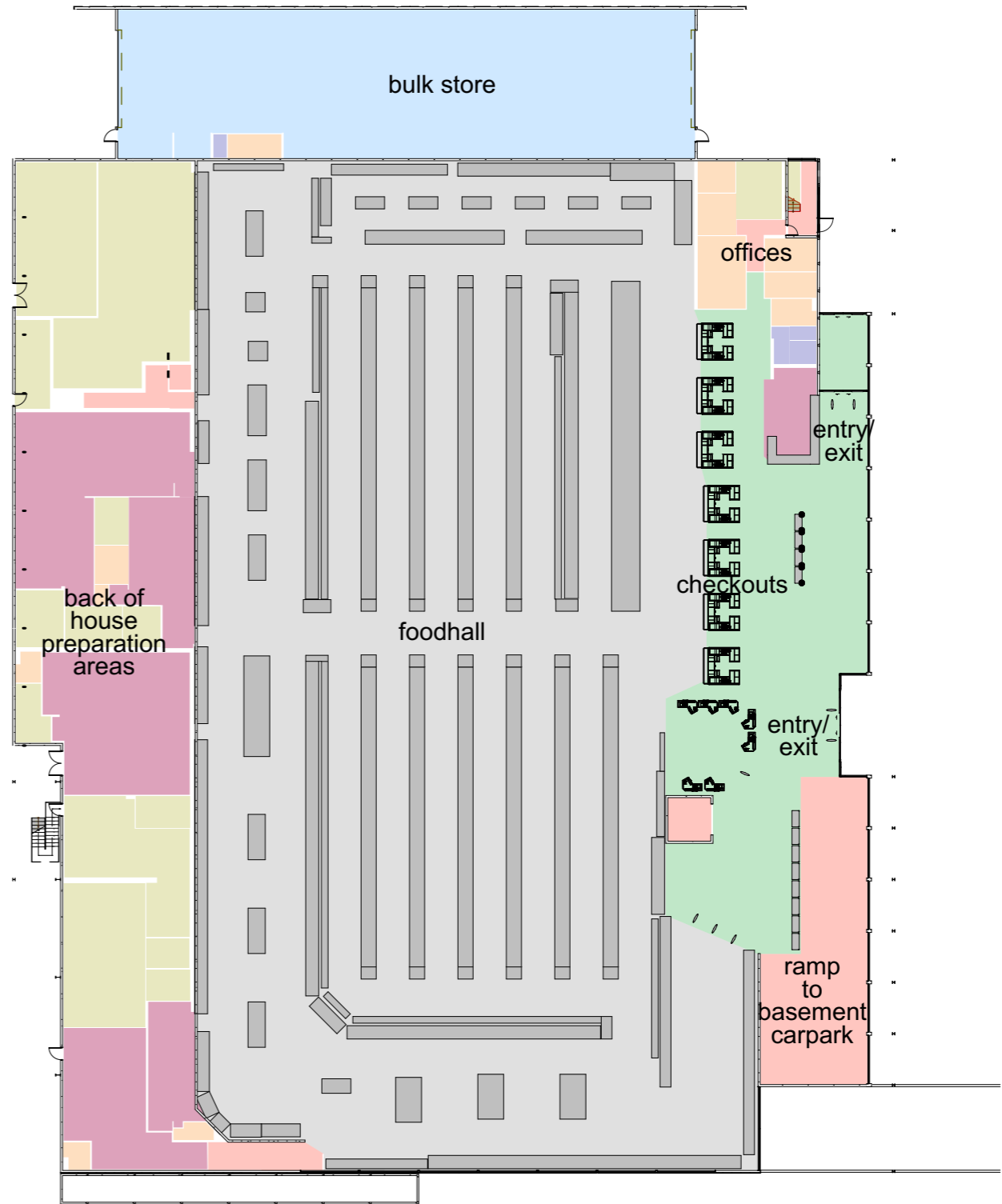
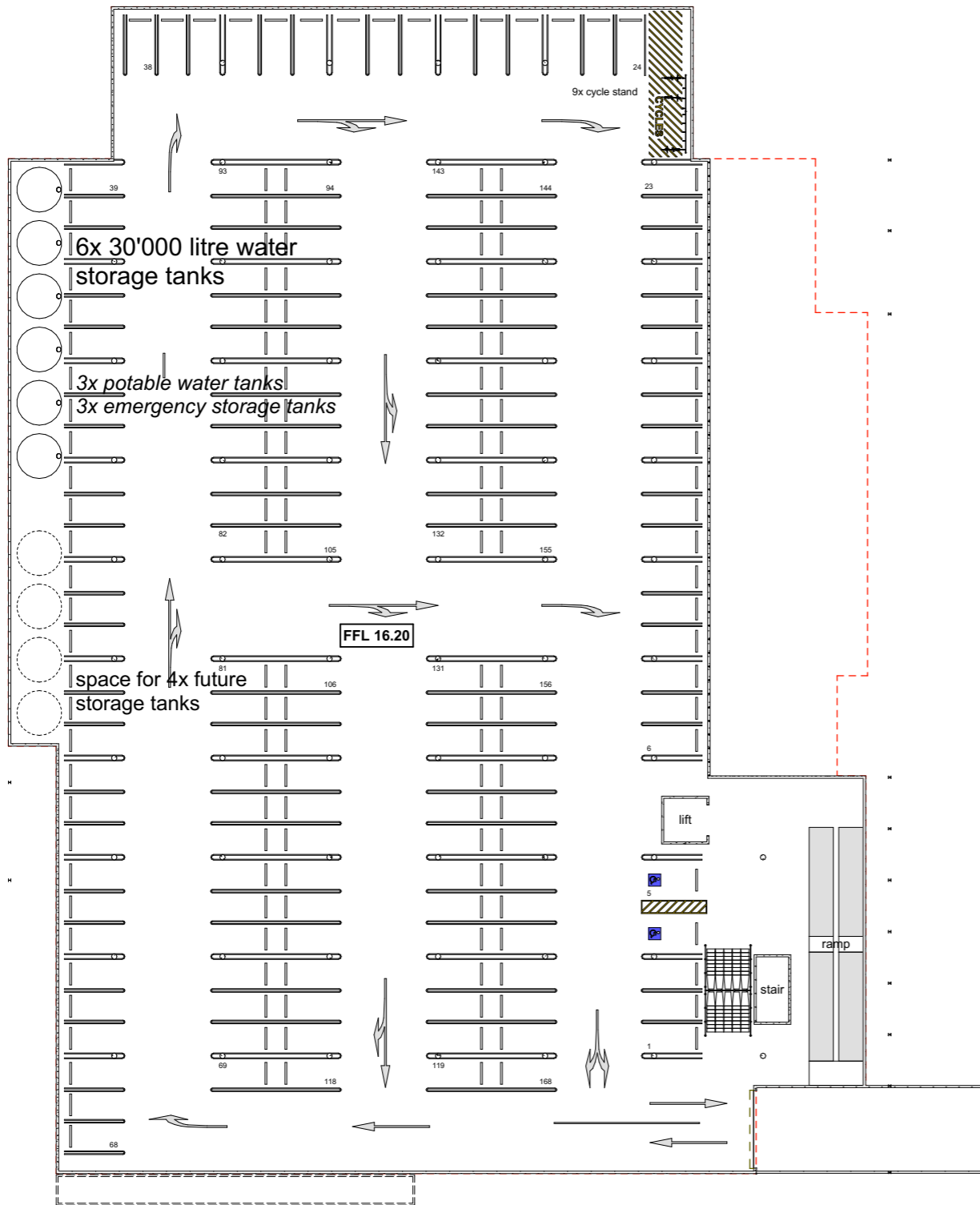


**McCOY WIXON ARCHITECTS**

242 Stuart St, PO Box 5436 DUNEDIN  
 T 03 477 2030  
 E architects@mccoywixon.co.nz  
 W mccoywixon.co.nz

**RCE01**  
 rev.

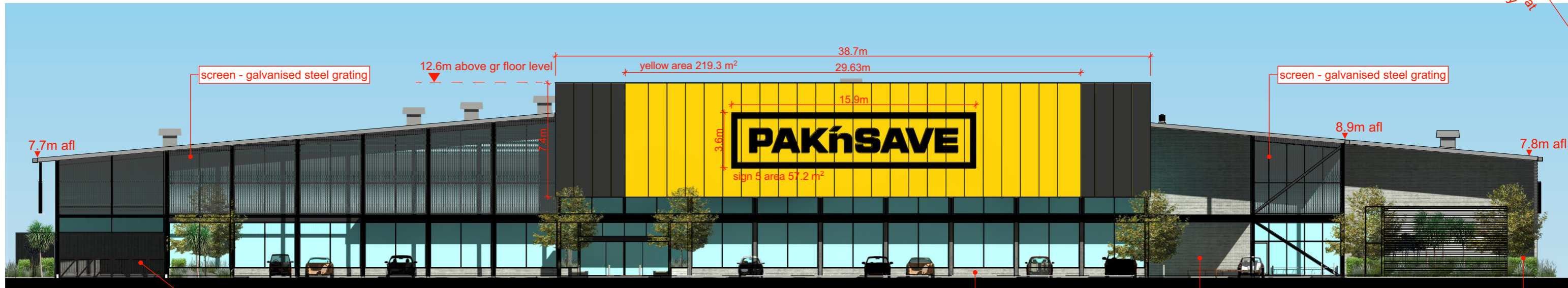






perspective elevation east

55° recession  
plane angle  
2.3m above  
ground level at  
boundary



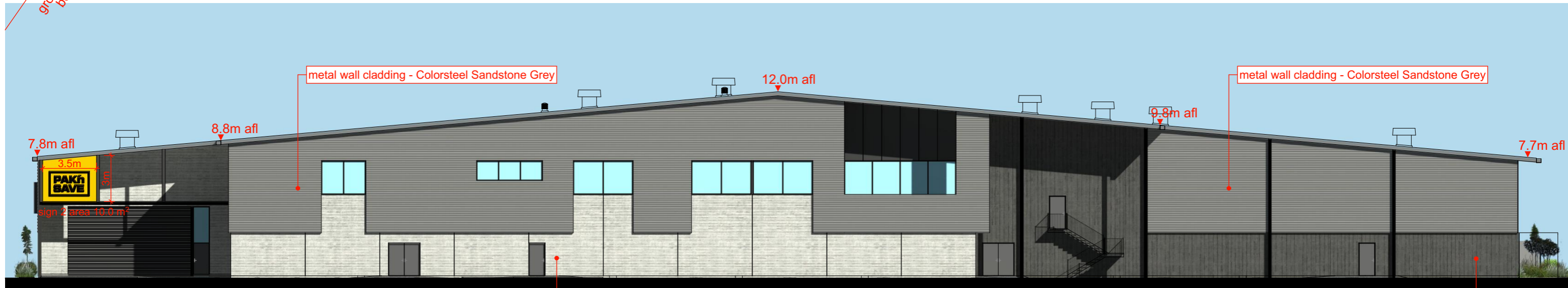
elevation east  
scale 1:250





perspective elevation west

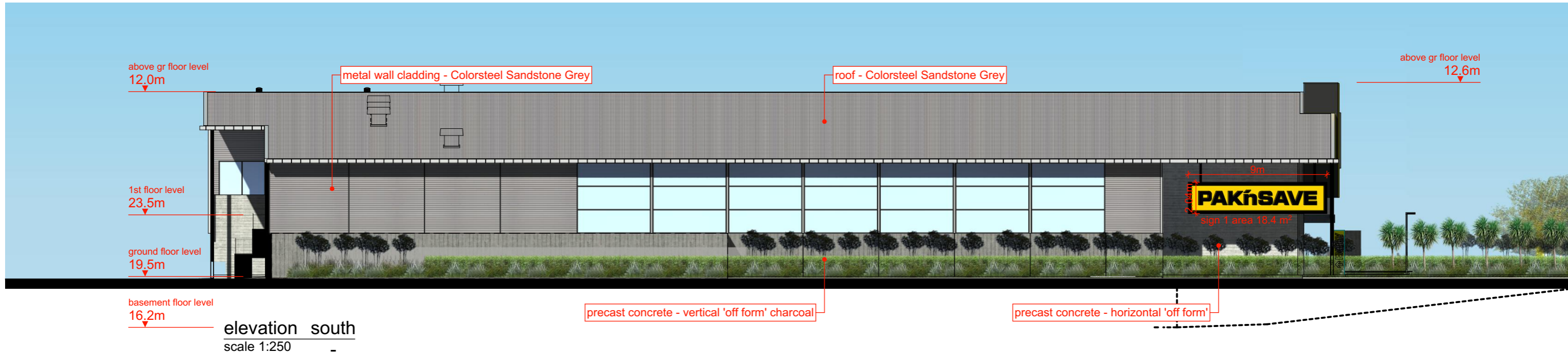
55° recession  
plane angle  
2.3m above  
ground level at  
boundary



elevation west  
scale 1:250



perspective elevation south





**PAPANUI PAK'nSAVE**  
view from north east corner

project number 5544  
printed 19/12/2019 1:17 PM  
status **RESOURCE CONSENT**

**McCOY WIXON**  
**ARCHITECTS**

242 Stuart St, PO Box 5436 DUNEDIN  
03 477 2030  
architects@mccoywixon.co.nz  
mccoywixon.co.nz

**RCe08**  
REV.





**PAPANUI PAK'nSAVE**  
view from south east corner

project number 5544  
printed 19/12/2019 1:17 PM  
status **RESOURCE CONSENT**

**McCOY WIXON**  
**ARCHITECTS**

242 Stuart St, PO Box 5436 DUNEDIN 03 477 2030  
T architects@mccoywixon.co.nz  
E mccoymwixon.co.nz  
W R**Ce09**  
REV.



**PAPANUI PAK'nSAVE**  
views from Main North Road

project number 5544  
 printed 19/12/2019 1:17 PM  
 status **RESOURCE CONSENT**

**McCOY WIXON**  
**ARCHITECTS**

242 Stuart St, PO Box 5436 DUNEDIN  
 T 03 477 2030  
 E architects@mccoywixon.co.nz  
 W mccoywixon.co.nz

**RCe10**  
 rev.



**PAPANUI PAK'nSAVE**  
supermarket perspectives

project number 5544  
 printed 19/12/2019 1:17 PM  
 status **RESOURCE CONSENT**

**McCOY WIXON**  
ARCHITECTS

242 Stuart St, PO Box 5436 DUNEDIN  
 T 03 477 2030  
 E architects@mccoywixon.co.nz  
 W mccoywixon.co.nz

**RCe11**  
REV.



**PAPANUI PAK'nSAVE**  
views of entry

project number 5544  
 printed 19/12/2019 1:17 PM  
 status **RESOURCE CONSENT**

**McCOY WIXON**  
ARCHITECTS

242 Stuart St, PO Box 5436 DUNEDIN  
 T 03 477 2030  
 E architects@mccoywixon.co.nz  
 W mccoywixon.co.nz

**RCE12**  
REV.



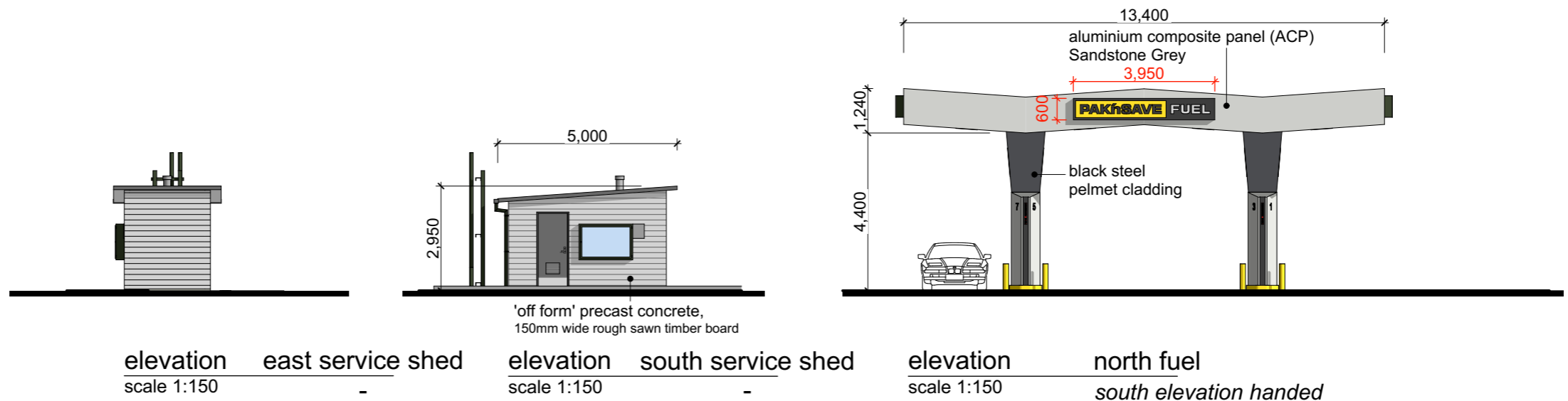
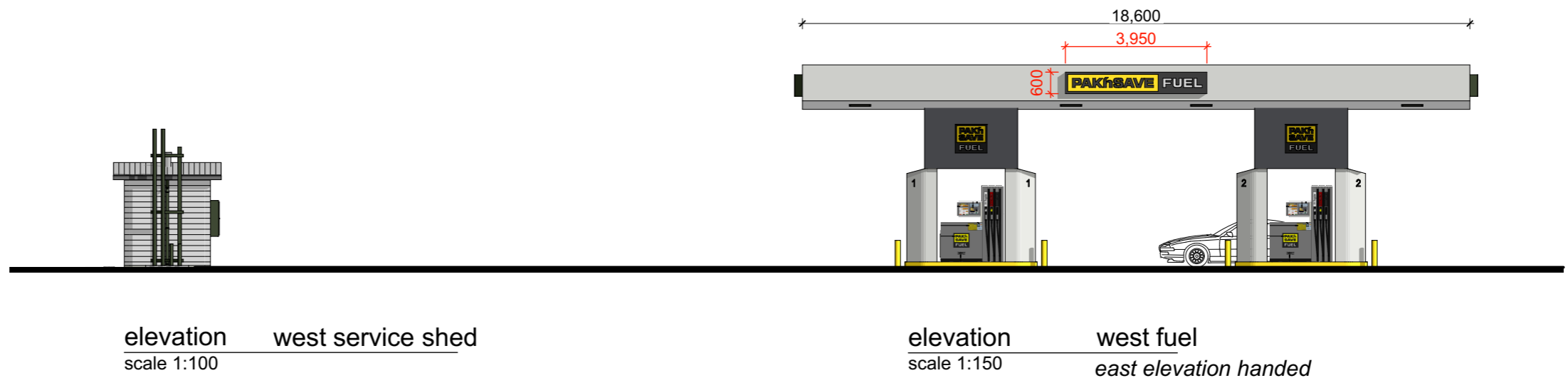
**PAPANUI PAK'nSAVE**  
corner views

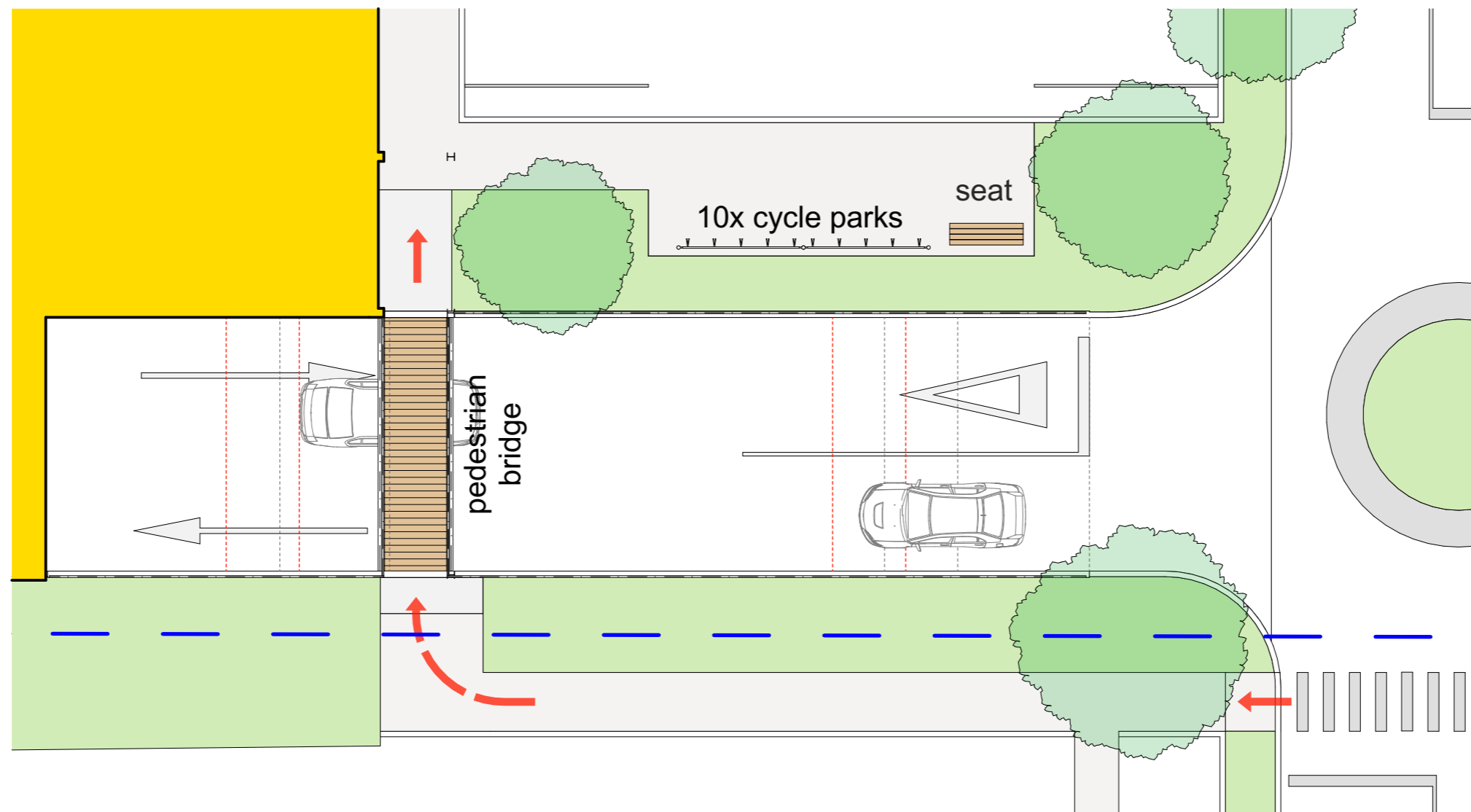
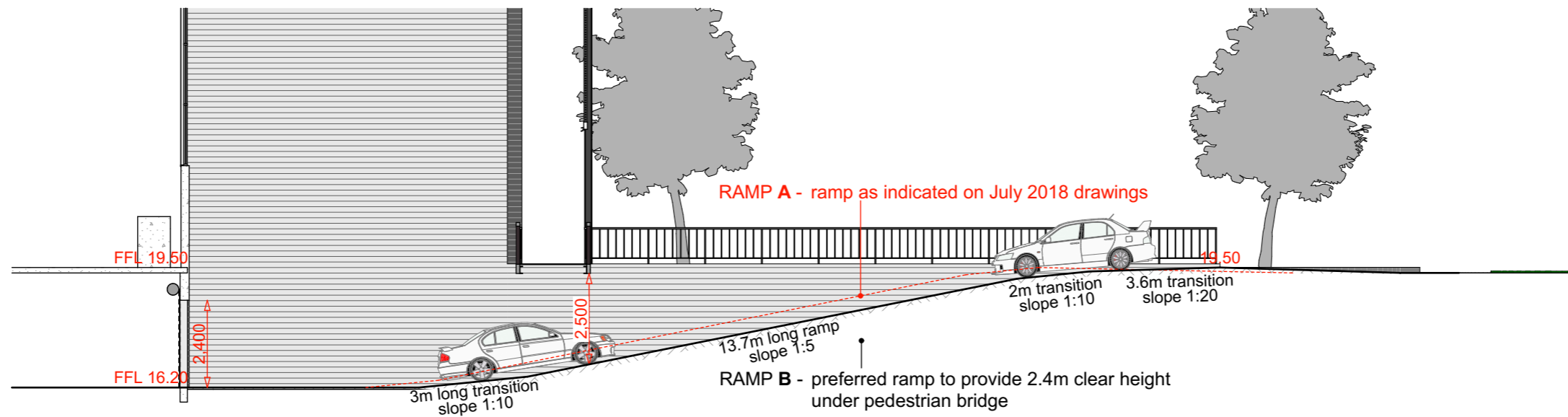
project number 5544  
 printed 19/12/2019 1:17 PM  
 status **RESOURCE CONSENT**

**McCOY WIXON**  
**ARCHITECTS**

242 Stuart St, PO Box 5436 DUNEDIN  
 T 03 477 2030  
 E architects@mccoywixon.co.nz  
 W mccoywixon.co.nz

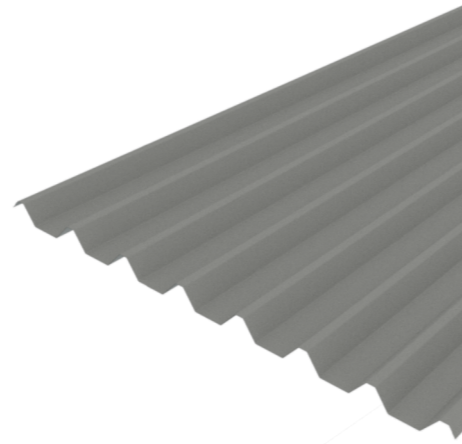
**RCe13**  
 rev.







cladding either side of fascia signage  
Dark Grey



trapezoidal metal cladding  
Sandstone Grey



horizontal 'trapezoidal profile' precast concrete  
Sandstone Grey



metal grating screen  
galvanised



Sandstone Grey



PAK'n SAVE Yellow



horizontal 'off the form' precast concrete  
natural



vertical 'off the form' precast concrete  
charcoal