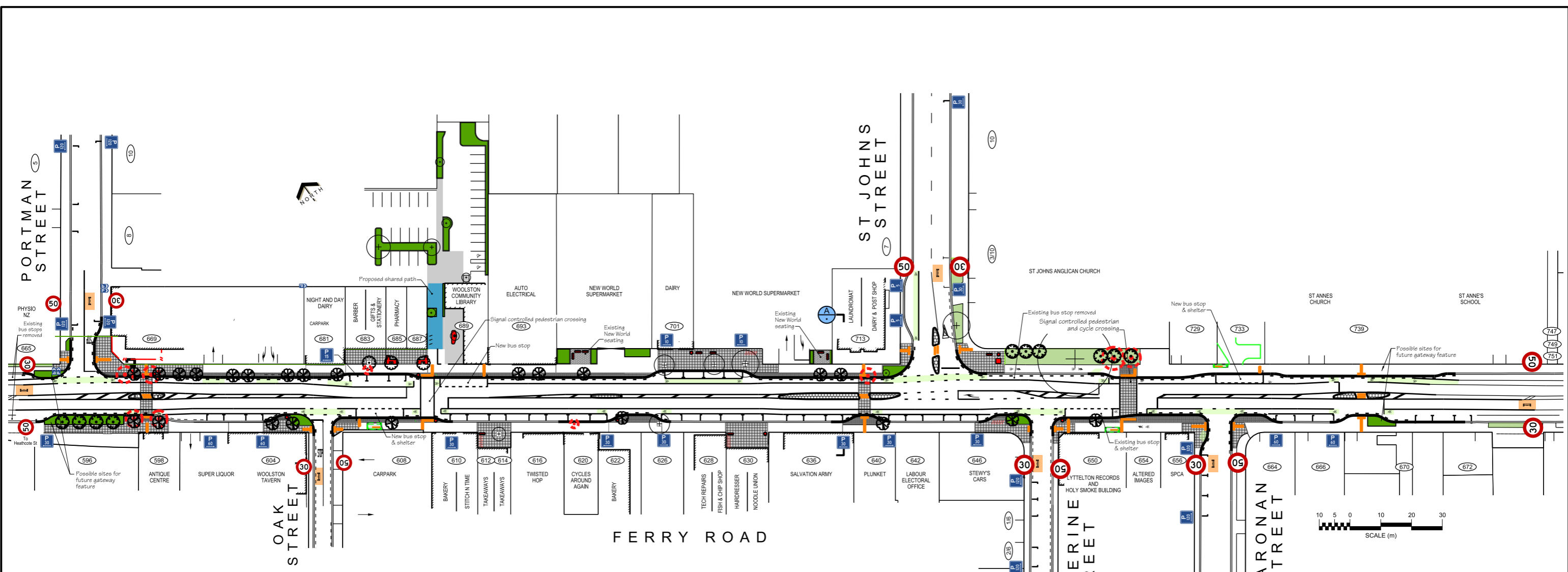


© Copyright Christchurch City Council / Aerial Photography Creative Commons Attribution 3.0 New Zealand License

Original size mm
100
50
30
10



KEY			
	Existing kerb		Speed limit signs
	Proposed kerb		Shared path
	No stopping		Magnolia (Magnolia kobus)
	Existing painted median		Kauri (Agathis australis)
	Seat		Maple (Acer 'Autumn Blaze')
	Rubbish bin		Existing tree
	Cycle stands		Tree to be removed
	Tactile pavers		
	Bus shelter		
	Grass		
	Landscape planting		
	Patterned surface		
	Patterned header strip		

The number and location of trees are subject to services and will be finalised at the time of planting

