

Project area

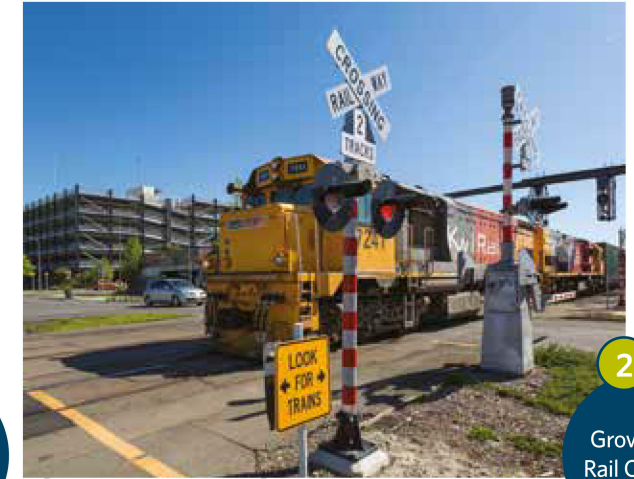
The project area includes State Highway 76 Brougham Street (from the Curletts Road intersection in the west to the Tunnel Road intersection in the east), Moorhouse Avenue and the surrounding areas highlighted in the map below.

We want to know what is working, what concerns you about this area and if you have any information we should know as we start our investigations.

Your local knowledge will be used to help develop short, medium and long term improvements that will make it safer and easier to get around.



1
Lincoln/
Moorhouse
Intersection



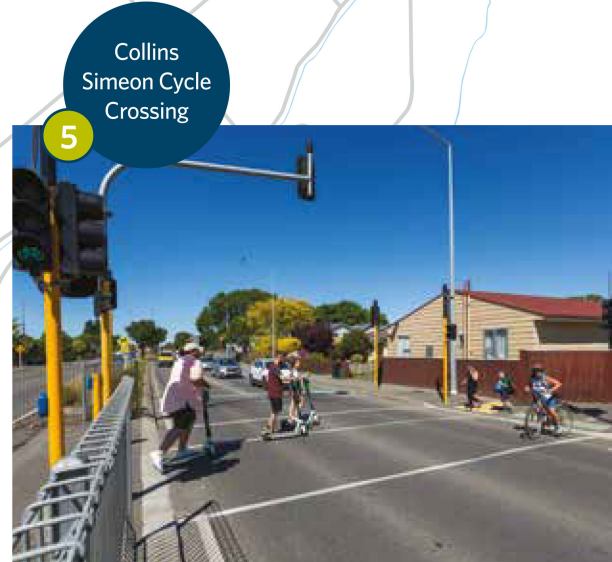
2
Grove Road
Rail Crossing



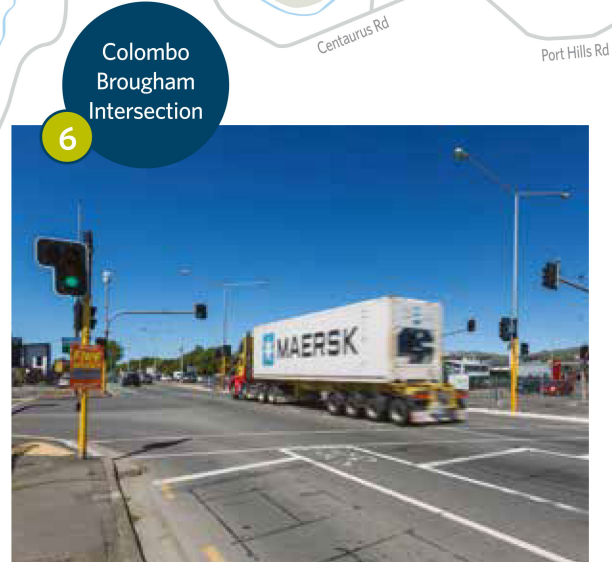
3
Sydenham



4
Moorhouse
Avenue



5
Collins
Simeon Cycle
Crossing



6
Colombo
Brougham
Intersection

LYTTELTON →