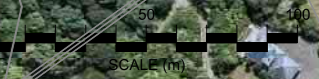
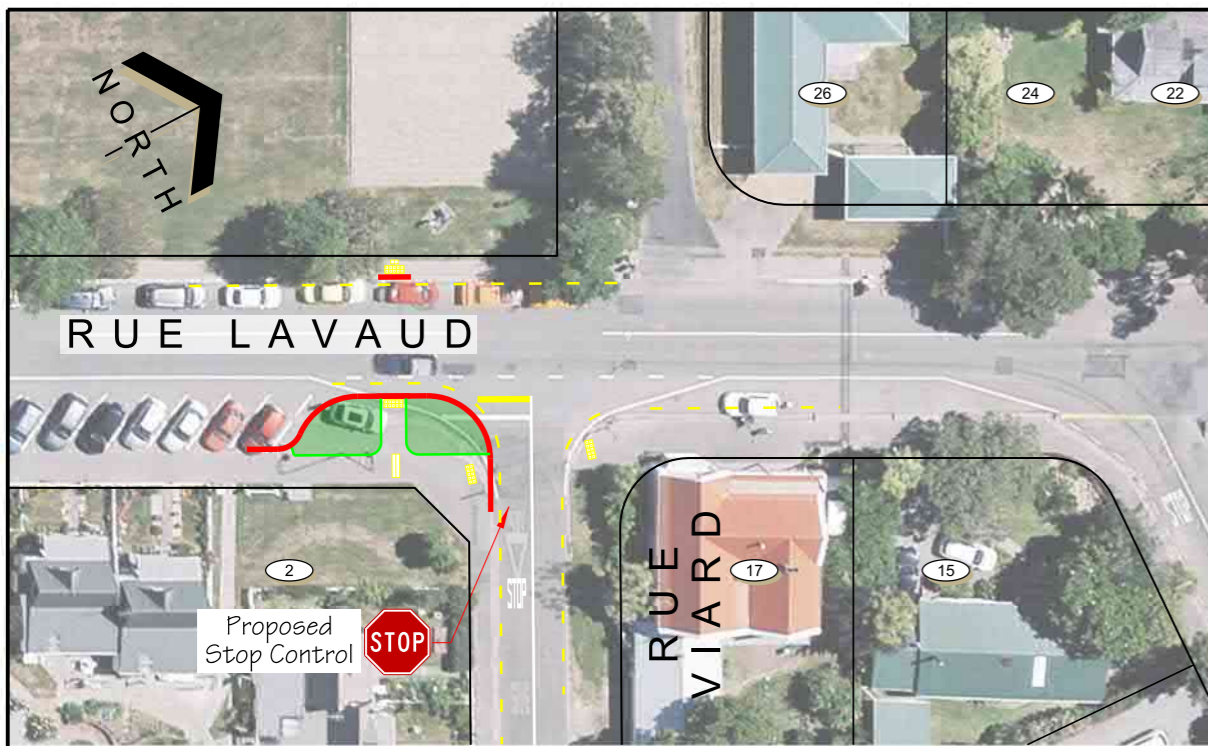


100 Original size mm  
50  
30  
10  
0  
© Copyright Christchurch City Council / Aerial Photography Creative Commons Attribution 3.0 New Zealand License



Original size mm  
100  
50  
30  
10  
0  
© Copyright Christchurch City Council / Aerial Photography Creative Commons Attribution 3.0 New Zealand License



**Location ① Rue Lavaud / Rue Viard Intersection**

A landscaped kerb build out is proposed at the intersection of Rue Lavaud and Rue Viard to narrow the crossing distance for pedestrians, in particular the elderly, and to improve visibility. In addition, kerb cut downs and tactile pavers are proposed to improve accessibility and safety for pedestrians, additional no stopping lines to improve visibility, and changing the current Give Way control to a Stop control.



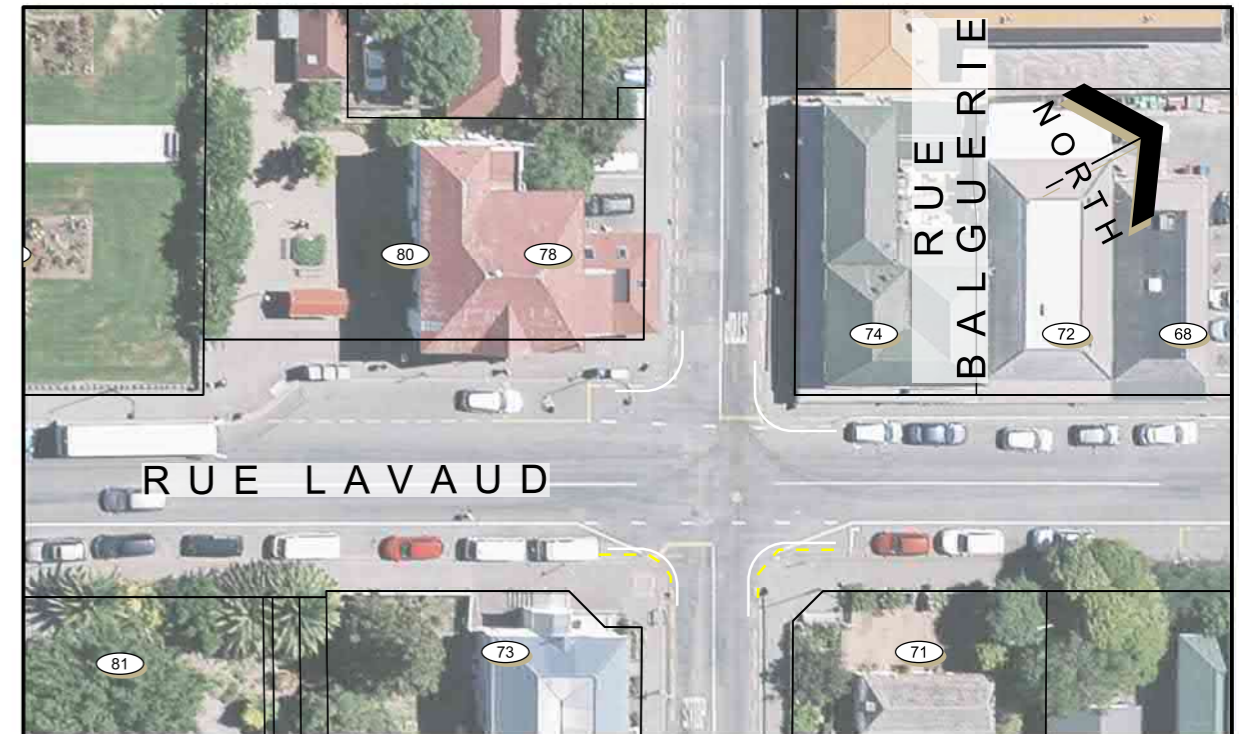
**Location ② Rue Lavaud / Rue Brittan Intersection**

White painted edge lines are proposed around the intersection corners to improve the delineation between the footpath and the road. A new kerb cut down is proposed. Tactile pavers are proposed to improve accessibility and safety for pedestrians, and additional no stopping lines are proposed to improve visibility.



**Location ③ Rue Lavaud / Rue Croix Intersection**

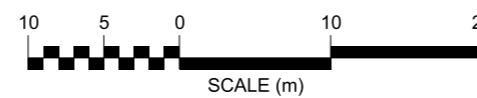
White painted edge lines are proposed around the intersection corners to improve the delineation between the footpath and the road. Tactile pavers are proposed to improve accessibility and safety for pedestrians. No stopping lines are proposed to improve visibility.



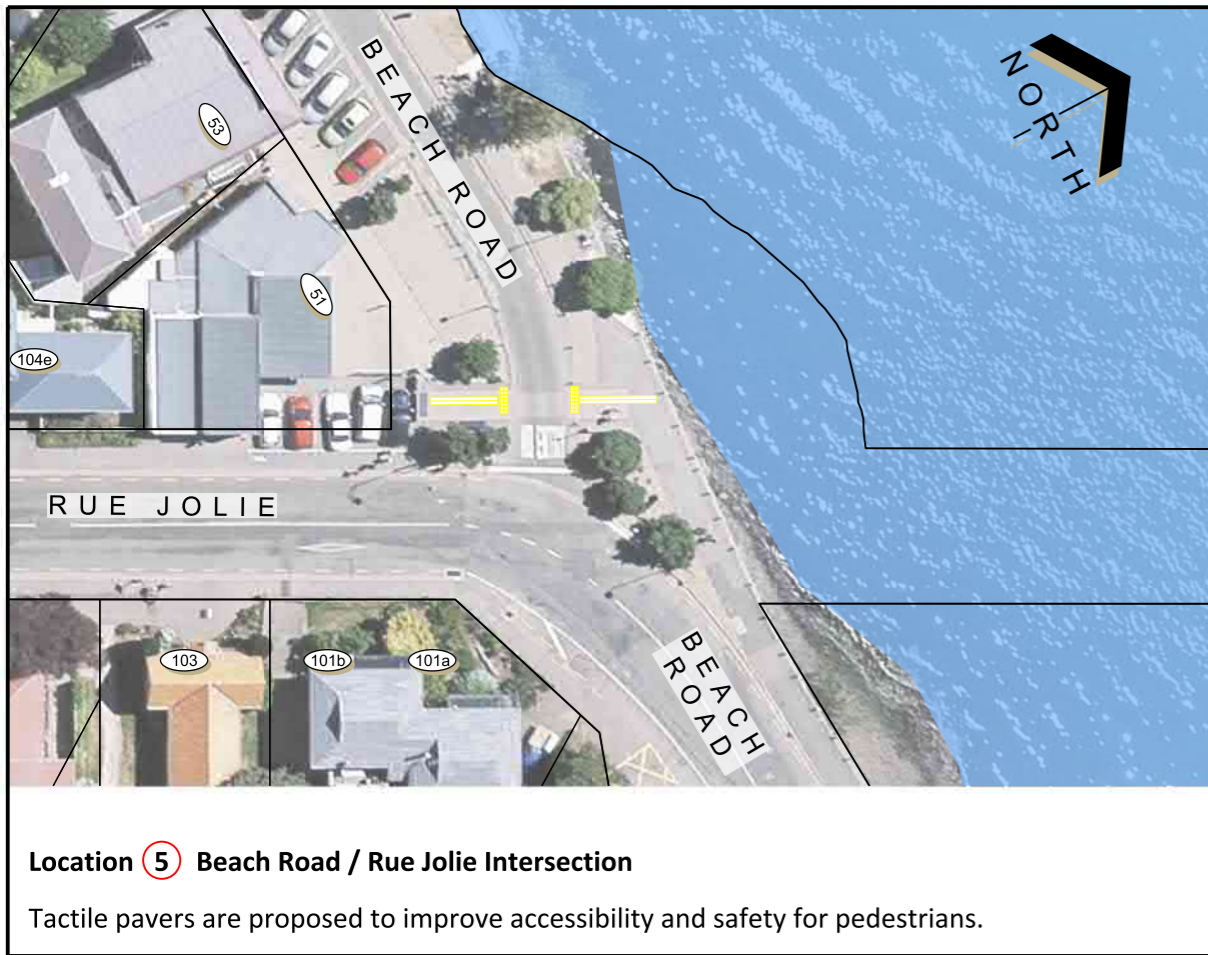
**Location ④ Rue Lavaud / Rue Balguerrie Intersection**

Following a meeting with the Akaroa Design & Appearance Advisory Committee and a subsequent site visit, it has been decided to undertake a more in depth investigation into issues at this intersection, with view to completion of tactile pavers and crossing points at a later date. In the interim to improve accessibility, safety and visibility, white painted edge lines and additional no stopping lines are proposed.

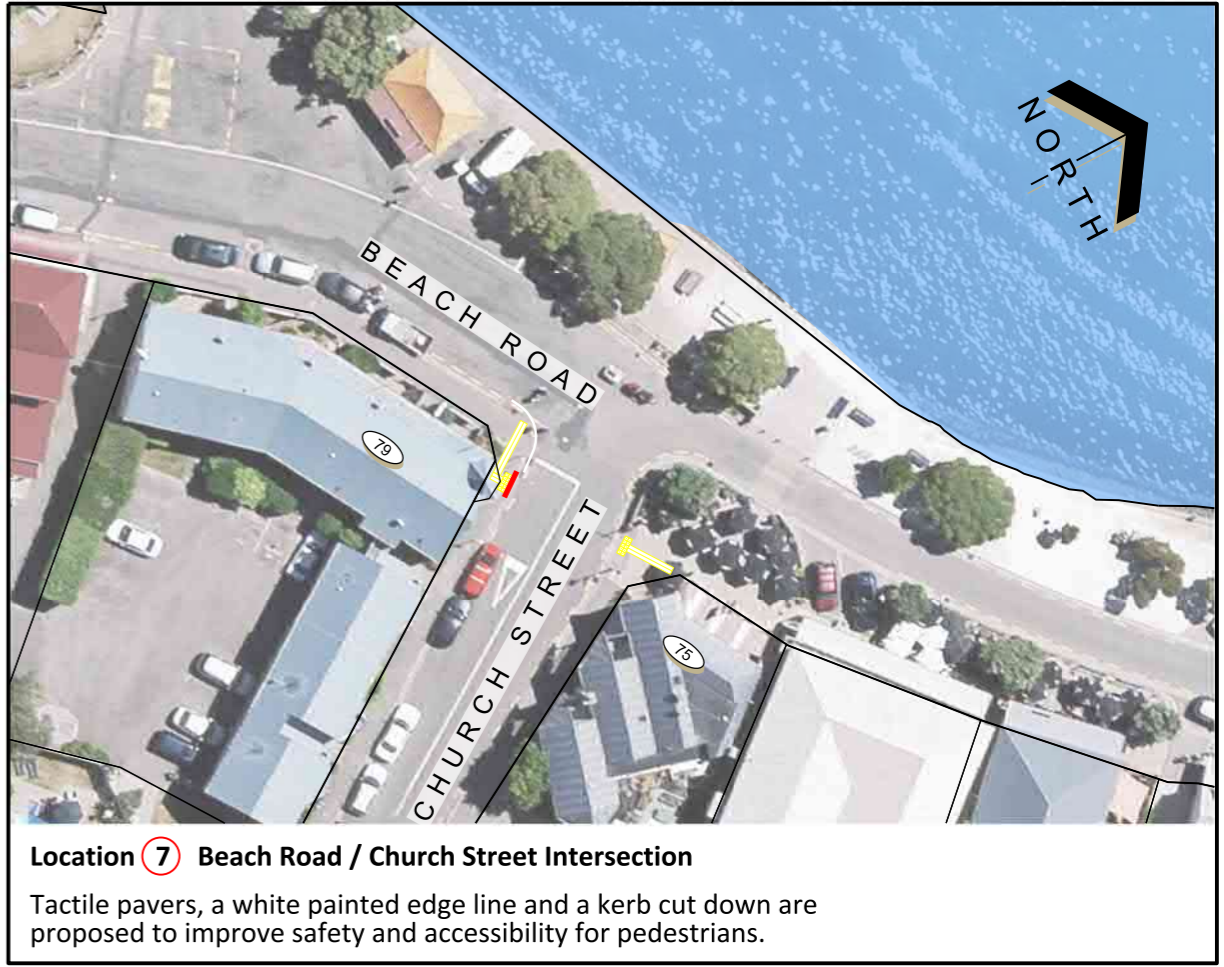
KEY	
	Proposed Kerb
	No Stopping
	Tactile pavers
	Landscaping



100 Original size mm  
50  
30  
10  
0  
© Copyright Christchurch City Council / Aerial Photography Creative Commons Attribution 3.0 New Zealand License



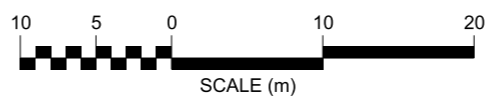
**Location 5 Beach Road / Rue Jolie Intersection**  
Tactile pavers are proposed to improve accessibility and safety for pedestrians.



**Location 7 Beach Road / Church Street Intersection**  
Tactile pavers, a white painted edge line and a kerb cut down are proposed to improve safety and accessibility for pedestrians.



**Location 6 Rue Jolie Zebra Pedestrian Crossing**  
Tactile pavers and additional no stopping lines are proposed at the existing zebra pedestrian crossing to improve safety, accessibility and visibility.



KEY	
	Proposed Kerb
	No Stopping
	Tactile pavers