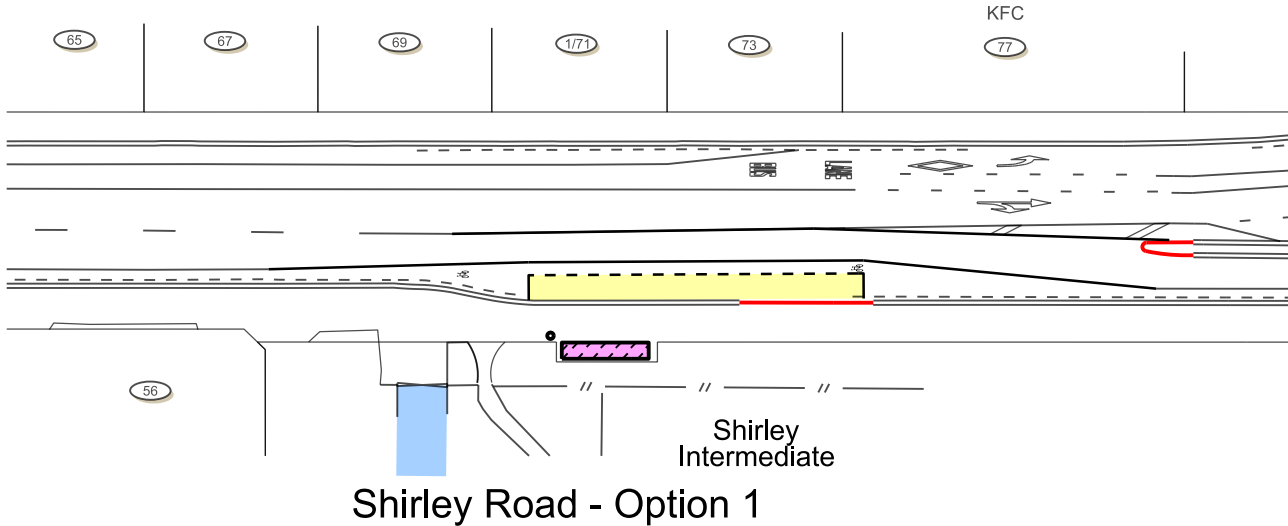







SHIRLEY ROAD

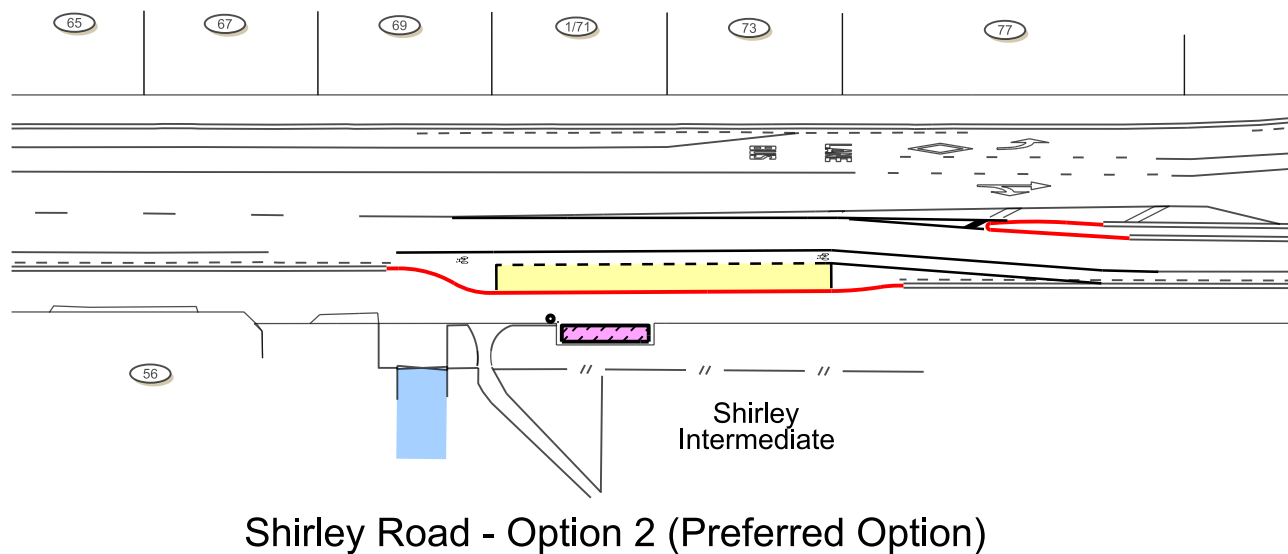


KEY	
	Shelter
	Bus Stops
	Access for Shirley Intermediate
	Proposed Kerb
	Rubbish Bin

Option 1 was discounted because

- No additional safety improvements

SHIRLEY ROAD



Option 2 was chosen as the preferred option because

- Meets all objectives and provides additional safety benefits
- Indenting the kerb provides additional on-road space for cyclists and general traffic
- A new 'No stopping' box at the intersection means buses can turn from North Parade into Shirley Road safely