

Canterbury

District Health Board

Te Poari Hauora o Waitaha

Submission on Hornby Library and Customer Services, South West Leisure

To: Christchurch City Council

Submitter: Canterbury District Health Board

Attn: Bronwyn Larsen
Community and Public Health
C/- Canterbury District Health Board
PO Box 1475
Christchurch 8140

Proposal: Christchurch City Council is consulting on options for the co-location of the Hornby Library and Customer services centre and the South West Leisure centre, including a pool and fitness centre.

SUBMISSION ON HORNBY LIBRARY AND CUSTOMER SERVICES, SOUTH WEST LEISURE

Details of submitter

1. Canterbury District Health Board (CDHB).
2. The submitter is responsible for promoting the reduction of adverse environmental effects on the health of people and communities and to improve, promote and protect their health pursuant to the New Zealand Public Health and Disability Act 2000 and the Health Act 1956. These statutory obligations are the responsibility of the Ministry of Health and, in the Canterbury District, are carried out under contract by Community and Public Health under Crown funding agreements on behalf of the Canterbury District Health Board.
3. The Ministry of Health requires the submitter to reduce potential health risks by such means as submissions to ensure the public health significance of potential adverse effects are adequately considered during policy development.

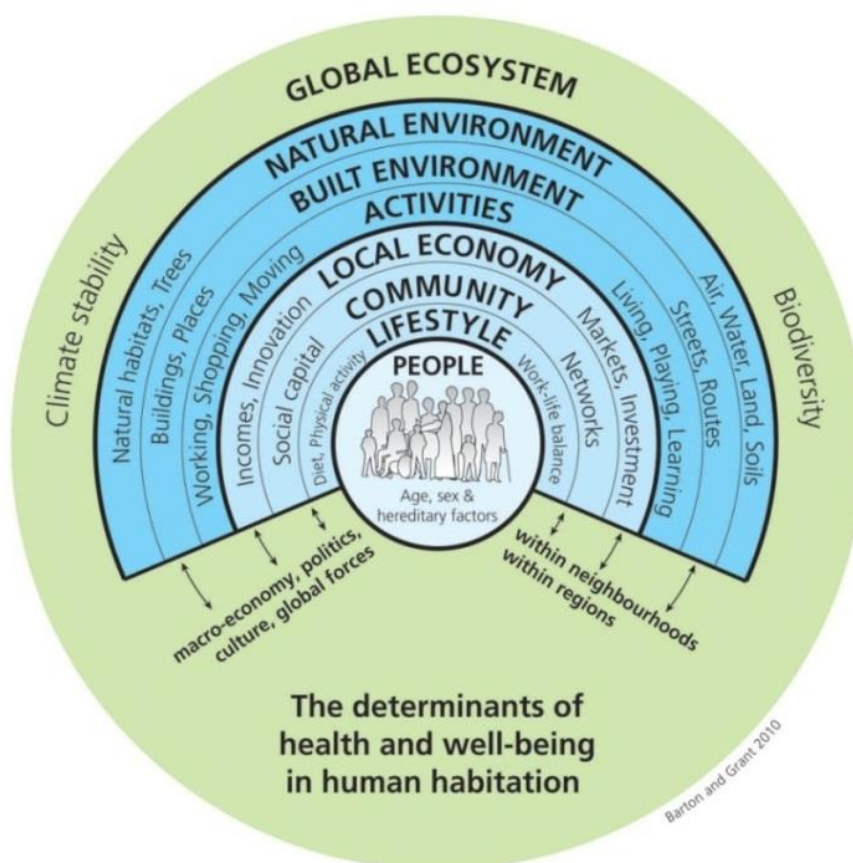
Details of submission

4. We welcome the opportunity to comment on the Hornby Library and Customer Services, South West Leisure consultation. The future health of our populations is not just reliant on hospitals, but on a responsive environment where all sectors work collaboratively.
5. While health care services are an important determinant of health, health is also influenced by a wide range of factors beyond the health sector. Health care services manage disease and trauma and are an important determinant of health outcomes. However health creation and wellbeing (overall quality of life) is influenced by a wide range of factors beyond the health sector.
6. These influences can be described as the conditions in which people are born, grow, live, work and age, and are impacted by environmental, social and behavioural factors. They are often referred to as the 'social determinants of health'¹.

¹ Public Health Advisory Committee. 2004. *The Health of People and Communities. A Way Forward: Public Policy and the Economic Determinants of Health*. Public Health Advisory Committee: Wellington.

The diagram² below shows how the various influences on health are complex and interlinked.

- The most effective way to maximise people's wellbeing is to take these factors into account as early as possible during decision making and strategy development. Initiatives to improve health outcomes and overall quality of life must involve organisations and groups beyond the health sector, such as local government if they are to have a reasonable impact³.



² Barton, H and Grant, M. (2006) A health map for the local human habitat. *The Journal of the Royal Society for the Promotion of Health* 126 (6), pp 252-253. <http://www.bne.uwe.ac.uk/who/healthmap/default.asp>

³ McGinni s JM, Williams-Russo P, Knickman JR. 2002. *The case for more active policy attention to health promotion. Health Affairs*, 21(2): 78 - 93.

General Comments

8. The CDHB supports development of a multi-purpose aquatic centre, library and service centre in the Hornby area. The connections between built environments and health outcomes are well researched; built environments have the ability to impact upon the risk of chronic illnesses such as cardiovascular disease, diabetes, obesity and the mental health of our community⁴.
9. This community facility has potential to reduce the impact of chronic disease on the local community by promoting physical activity and active transport, providing a place to learn and connect with others thus positively impacting upon multiple determinants of health.

Specific comments

10. The CDHB recommends that a co-located facility is developed due to the impact on the environment associated with running separate sites. A single co-located facility may be more energy efficient and subsequently more cost effective for the Council. The CDHB supports use of sustainable design (as per objective 8.2.2.5. in the Christchurch District Plan⁵) in relation to building materials, heating and cooling, and use of natural light to reduce adverse environmental impacts of the facility.
11. The CDHB supports the criteria used to assess the three potential sites. Ensuring that the facility is well connected to active and public transport links and is within close proximity to the residential area for which it will serve is vital to ensure it can be easily accessed and will be well utilised. Close linkages to schools, who may wish to utilise these community facilities as part of their curriculum, is also an important consideration. Both Kyle and Denton Park offer the most benefits in relation to these considerations given they are close to public transport links and the cycle way.
12. Both Denton and Kyle Park better meet the third assessment criteria of '*Profile and sustainability*' given they are in close proximity to the existing Hornby Commercial Centre. This centre is already a main destination for those in the South West and

⁴ Sallis, J. F., et al. (2012). "Role of Built Environments in Physical Activity, Obesity, and Cardiovascular Disease." *Circulation* 125(5): 729-737

⁵ Christchurch City Council. 2017. *Christchurch District Plan*. Retrieved from: <https://districtplan.ccc.govt.nz/pages/plan/book.aspx?exhibit=DistrictPlan&hid=85335&s=energy>

ensuring that the Hornby Library and Customer Services, South West Leisure is highly visible from this destination may encourage use.

13. The Warren Park site appears to offer less connectivity to other community amenities in the area and therefore is the least attractive option according to the assessment criteria used, however the CDHB acknowledges that developing this site would have the least impact on already existing facilities.
14. The CDHB recommends that accessibility of the site for those with disabilities be considered as an additional key criteria. Access to the carpark and proximity to public transport links are key factors to ensure that those with mobility needs are able to confidently travel to and access the facility without having to walk long distances. With the rapid growth of population in the South West area, residents will increasingly have diverse needs which will become more prevalent as the population ages. The chosen site should be developed using universal design principles, for example the ability to provide mobility parking close to entrances with fully accessible paths.
15. The CDHB recommends that a CPTED audit is included as part of the site assessments to ensure the chosen site is safe for users. In particular, that entrance and access routes are highly visible and well-lit.
16. The CDHB recommends that the safety of pedestrians, cycles and vehicles be considered when deciding which site is more suitable. Safety when accessing the Denton Park site from State Highway 1 is a significant concern, particularly due to the fact that a high number of children and older people may be using this facility. The CDHB recommends that the Council and NZTA collaborate to incorporate adequate traffic calming measures, and pedestrian and cyclist refuges into the design to ensure safety at these entrance points.
17. The loss of current sport and recreation facilities and change of reserve classification in relation to all three sites would need to be carefully considered. Sports grounds, and other amenities such as the BMX track, would need to be relocated within close proximity to their current location so that access to these recreational facilities by the local community isn't compromised.
18. Although out of scope at this stage, the CDHB recommends that during the design concept stage, Council budgets for additional costs associated with ensuring

compliance with the Recreational Water Standards for swimming pools, NZS 5826:2010 Pool Water Quality. In particular, the disinfection (Sand Filtration, Chlorine and/or UV) must be in line with the Standard to minimise the risk particularly of Cryptosporidium outbreaks.

Conclusion

19. The CDHB does not wish to be heard in support of this submission.
20. If others make a similar submission, the submitter will not consider presenting a joint case with them at the hearing.
21. Thank you for the opportunity to submit on Hornby Library and Customer Services, South West Leisure Consultation.

Person making the submission

A handwritten signature in black ink that reads "A. R. G. Humphrey". The signature is written in a cursive style and is underlined with a single horizontal line.

Dr. Alistair Humphrey MPH FNZCPHM FRACGP
Public Health Physician

7th June 2017

Contact details

Bronwyn Larsen
For and on behalf of
Community and Public Health
C/- Canterbury District Health Board
PO Box 1475
Christchurch 8140

P +64 3 364 1777
F +64 3 379 6488

bronwyn.larsen@cdhb.health.nz