

NEW HORNBY LIBRARY AND CUSTOMER SERVICES, AND SOUTH WEST LEISURE CENTRE

CONSULTATION SUMMARY

Introduction

Consultation on the new Hornby Library and Customer Services, and South West Leisure Centre was undertaken between Friday 28 April and Friday 9 June 2017. The full consultation document was sent to 1753 properties (including absentee landowners) within the vicinity of Denton Park, Kyle Park and Warren Park. The document was also sent to 142 key stakeholders and all Council libraries and service centres.

At the close of consultation we received 293 submissions.

Face to face engagement

Prior to formal consultation project team members met with:

- Hornby Cricket Club
- Hornby Rugby Club
- Hornby Football Club
- Canterbury Track Cycling
- Hornby Scout Group
- Martial Arts Club

These initial meetings were for the project team to get an understanding and feedback from the clubs on how they use Denton Park. A second meeting was held with these clubs again prior to consultation, to advise on what Council proposed to consult on. Staff also met with the BMX Club and Hornby Softball prior to consultation to giving them information related to the project.

During the consultation period, members of the project team attended the following meetings:

- Hornby Community Worker Network meeting
- Hornby Business Network meeting
- The Hub Youth Drop in Centre
- The Hub shoppers (informal)

Public drop in sessions were held on Saturday 6 May, Monday 8 May, and Monday 15 May and were attended by approximately 52 people.

Feedback

We received 293 submissions from community organisations, local businesses, schools, sports organisations, as well as many individuals.

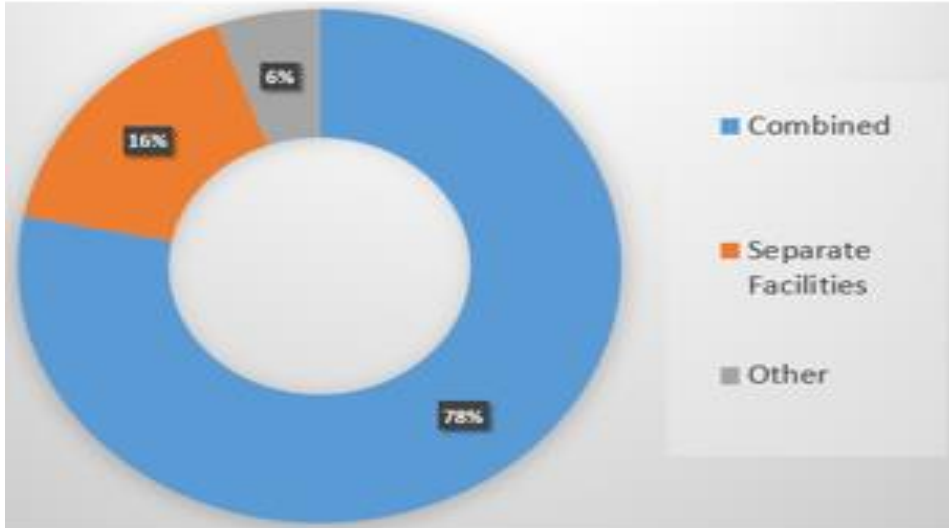
Co-location of the new facility was the preferred option with 229 submissions supporting a co-located facility with 48 submissions preferring separate facilities.

Question 1:

Should the Library and Customer Services, and the South West Leisure Centre be co-located within an integrated hub?

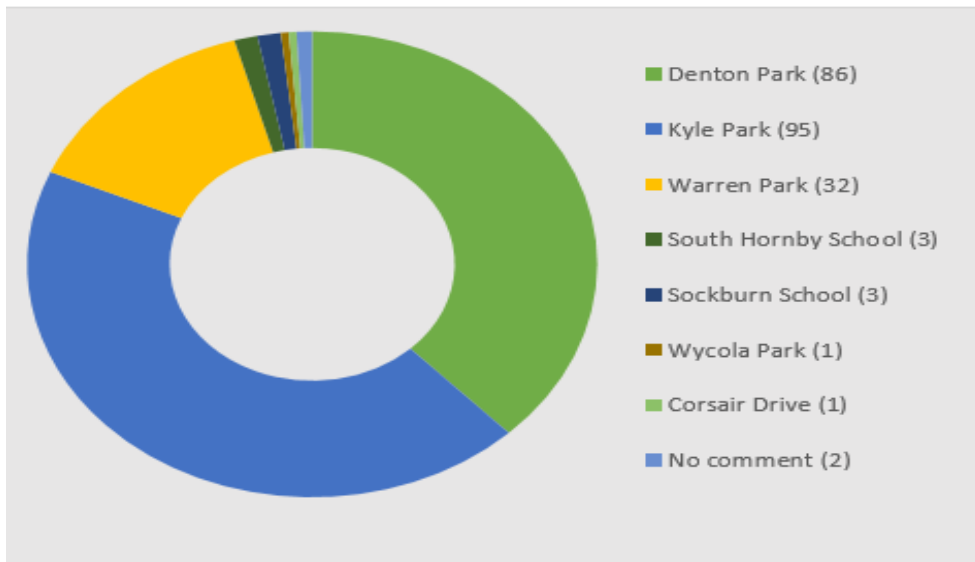
If you selected yes, please identify your preferred site (229 submissions).

Combined v. Separate Facilities:



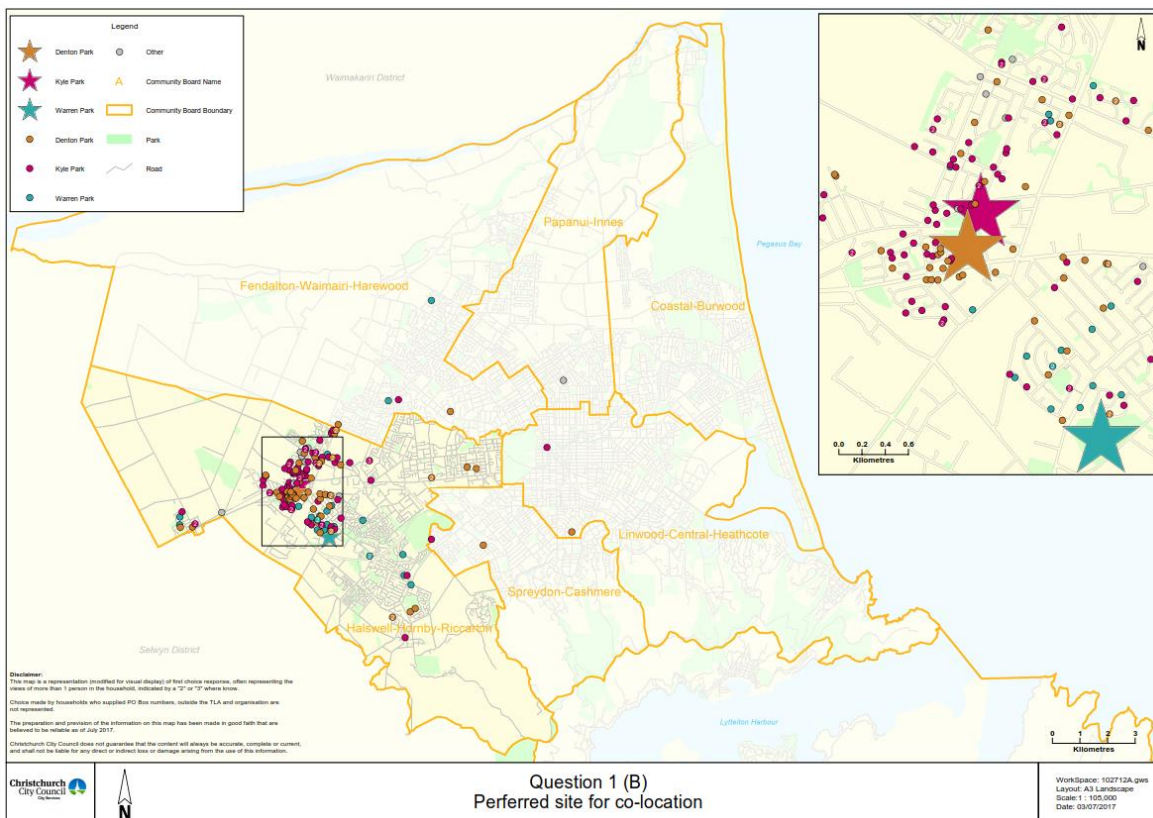
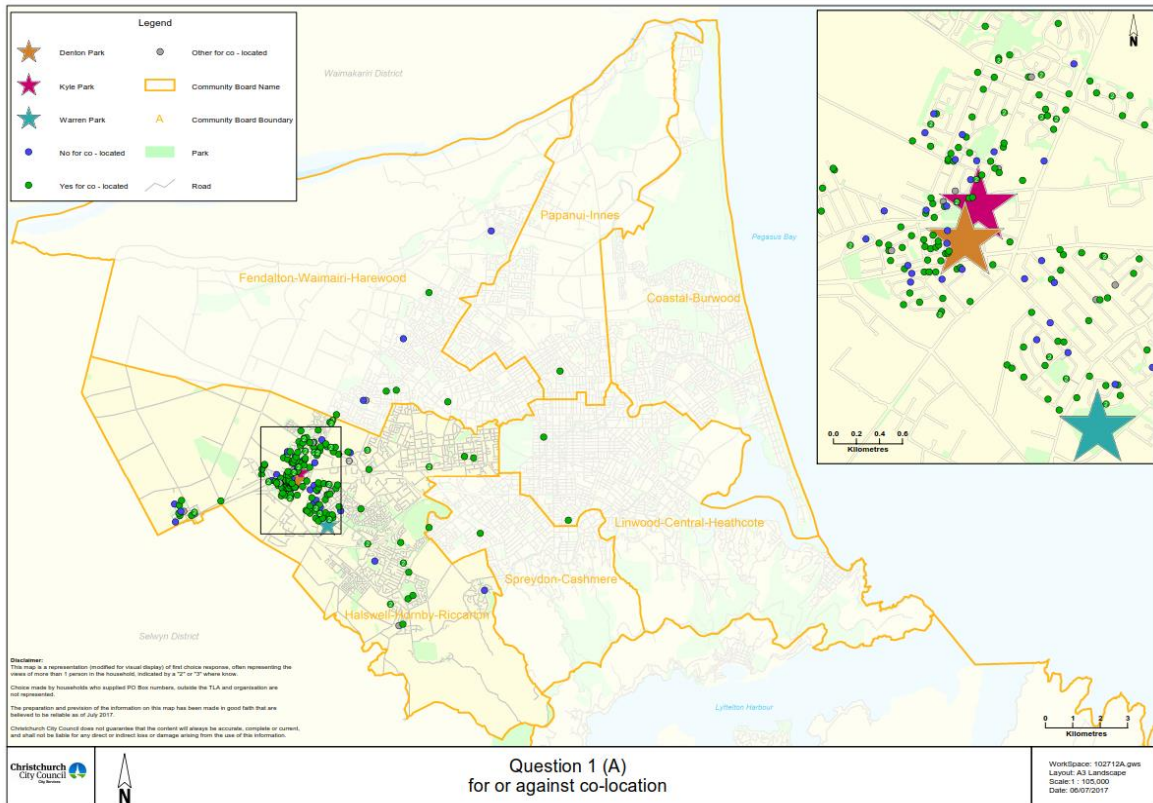
- 78% preferred a combined 'co-located' facility (229)
- 16% preferred separate facilities (48)
- 6% Others (16)

Co-located – Preferred site



- 38% Denton Park (87)
- 43% Kyle Park (98)
- 14% Warren Park (32)
- 4% Others (10)
- <1% No comment (2)

The maps below show the distribution of submissions received where a physical address was able to be obtained.



SUBMISSION BREAKDOWNS

Denton Park (87 submissions)

- 77 individual submissions
- Canterbury Track Cycling
- Self and Mas Oyama Kyokushin Karate Dojo Christchurch Charitable Trust
- Halswell United AFC
- Hornby Community Care Trust
- Environment Canterbury (ECAN)
- Hornby High School - Board of Trustees
- Community Development Network Trust
- Earthquake Disability Leadership Group
- Citizens Advice Bureau
- Blind Foundation
- The Hub
- Dressmart
- Sport Canterbury

Supporting comments	Number of submissions	Concerns raised	Number of submissions
Central/close to other key facilities, potential to be a daily hub for Hornby	56	Traffic congestion around Chalmers Street, vehicle movements around The Hub	27
Easy to access by car, foot and bike. Close to public transport interchange	53	Impact on existing users of the park	41
High profile site and close to main arterial routes	16	Non-users of the facilities could use the carparks when carparking is already an issue at this location	10

Kyle Park (98 submissions)

- 93 individual submissions
- Hornby Rugby League
- Hornby Cricket Club
- Hornby Netball Club
- Hornby Rugby Football Club
- Hei Hei Pharmacy

Supporting comments	Number of submissions	Concerns raised	Number of submissions
Currently under utilised and would not impact on existing users of other parks – also opportunity to remediate the land	53	Site is contaminated and requires remediation	3
Close to schools, The Hub and public transport and within good walking and biking distance	62	More costly site to build on	3
Less congestion and better parking	17	Access could be an issue as area already busy	3

Warren Park (32 submissions)

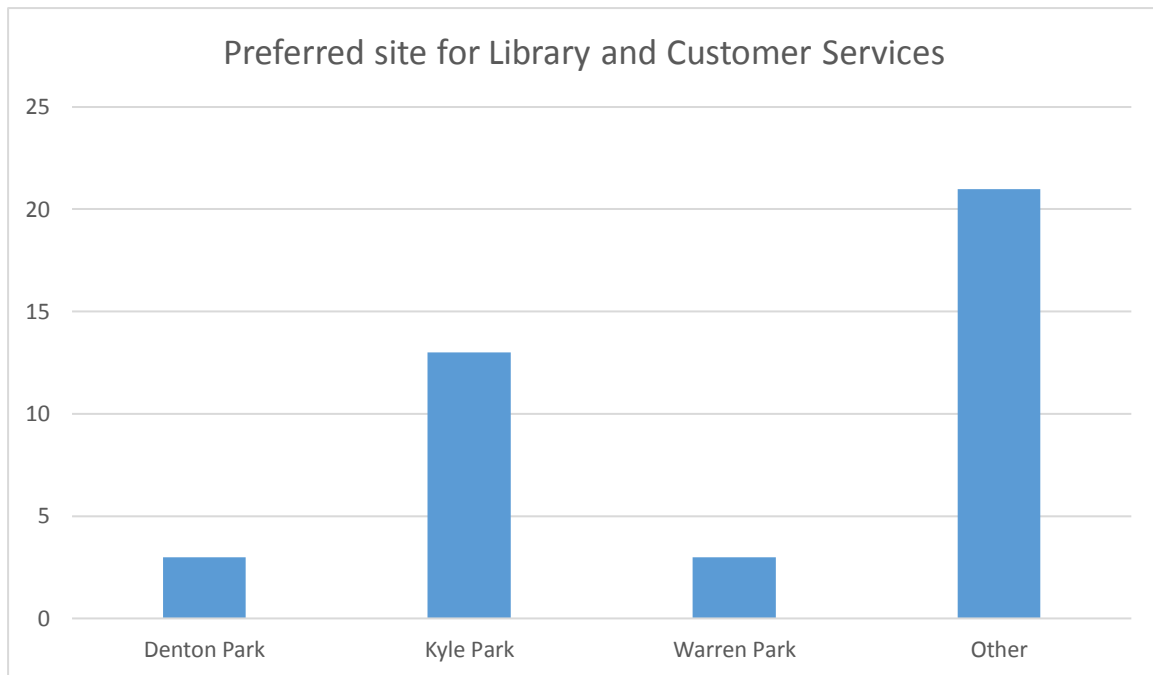
- 31 individual submissions
- Wigram Primary School

Supporting comments	Number of submissions	Concerns raised	Number of submissions
More space available at this location and currently under utilised	13	Too far away from the centre of Hornby	6
Would not impact on existing users	8	Too close to Halswell and its existing facilities	6
Wigram area is growing and close to schools	8	Impact on residential streets	2

Other options suggested (10 submissions)

- Corsair Drive park
- South Hornby School site
- Sockburn School site
- Wycola Park
- Broomfield Common

If you selected no to co-location, please identify your preferred site for the Library and Customer Services; and your preferred site for the South West Leisure Centre (48 submissions).



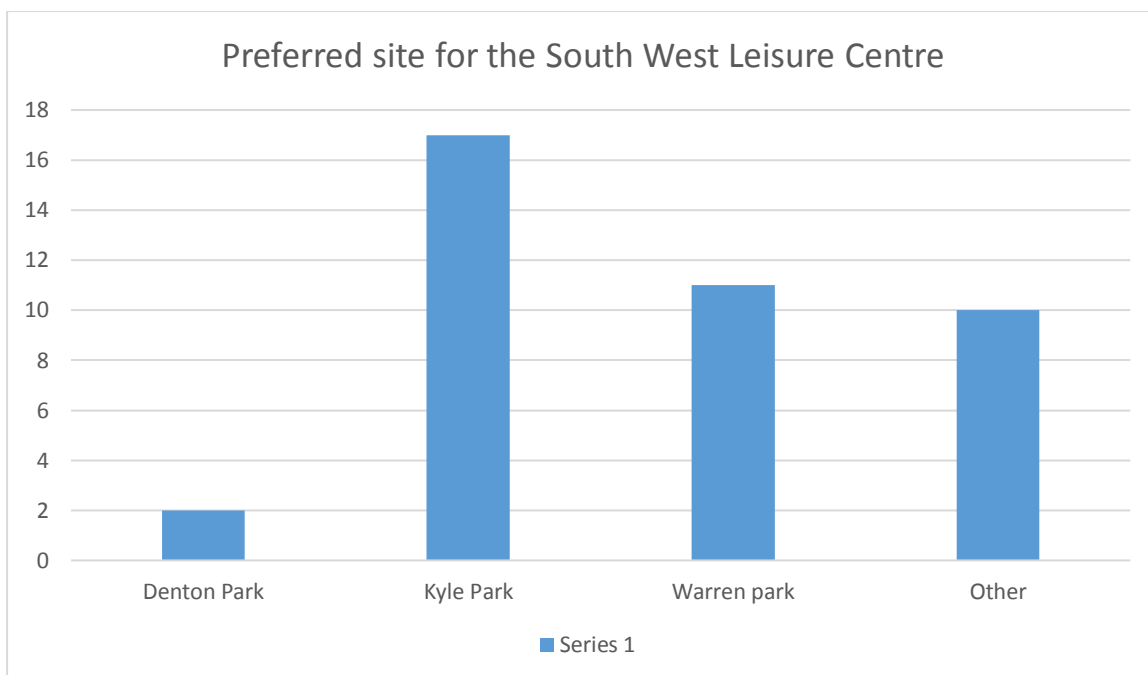
Other sites suggested:

- Current site in Goulding Avenue
- Wigram Airforce Base
- Wycola Park
- South Hornby School
- Sockburn School
- Sockburn Park

There was support (14 submissions) to retain the library on its current site and upgrade the existing facility and possibly extend the building into the adjacent land parcel.

Kyle Park also had support (12 submissions) for the location of the Library and Customer Services due to the proximity to the schools, available space, proximity to other facilities and easy access.

Neither Denton Park nor Warren Park had any strong support to locate the Library and Customer Services facility on these sites.



Other sites suggested:

- Old Sockburn pool site
- Wycola Park
- South Hornby School
- Sockburn Park
- New land
- Somewhere with plenty of parking

Kyle Park received the most submissions (17) due to its proximity to schools and its central location. Warren Park also drew a number of submissions (11) and this was due to the area having less traffic and good parking.

Question 2

FACILITIES USE

We asked submitters how they would use each of the Council facilities proposed to be included. Information gathered with this question will be used once a location and form is decided and initial planning and design is underway.

A large number of submitters indicated that they would use this service regularly when built. Currently they either go to other locations or do not use these facilities as they are unable to travel there.

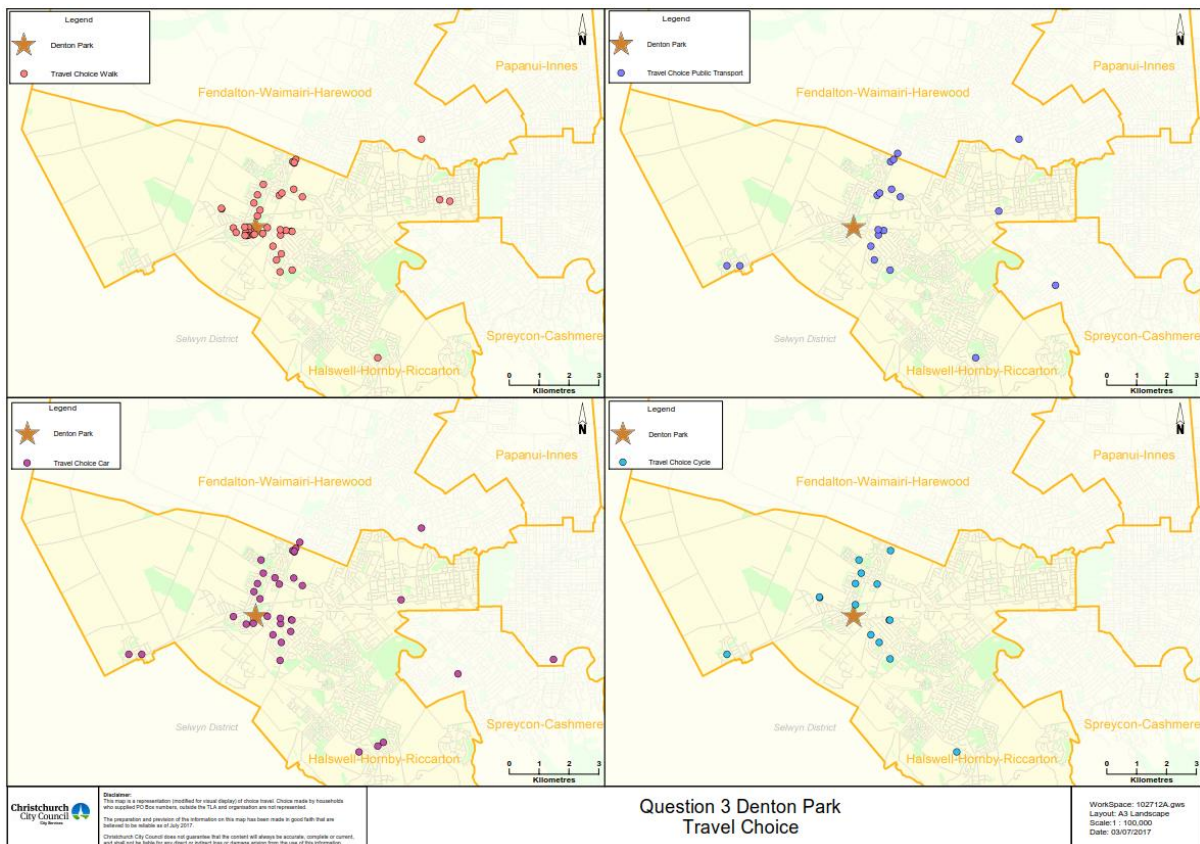
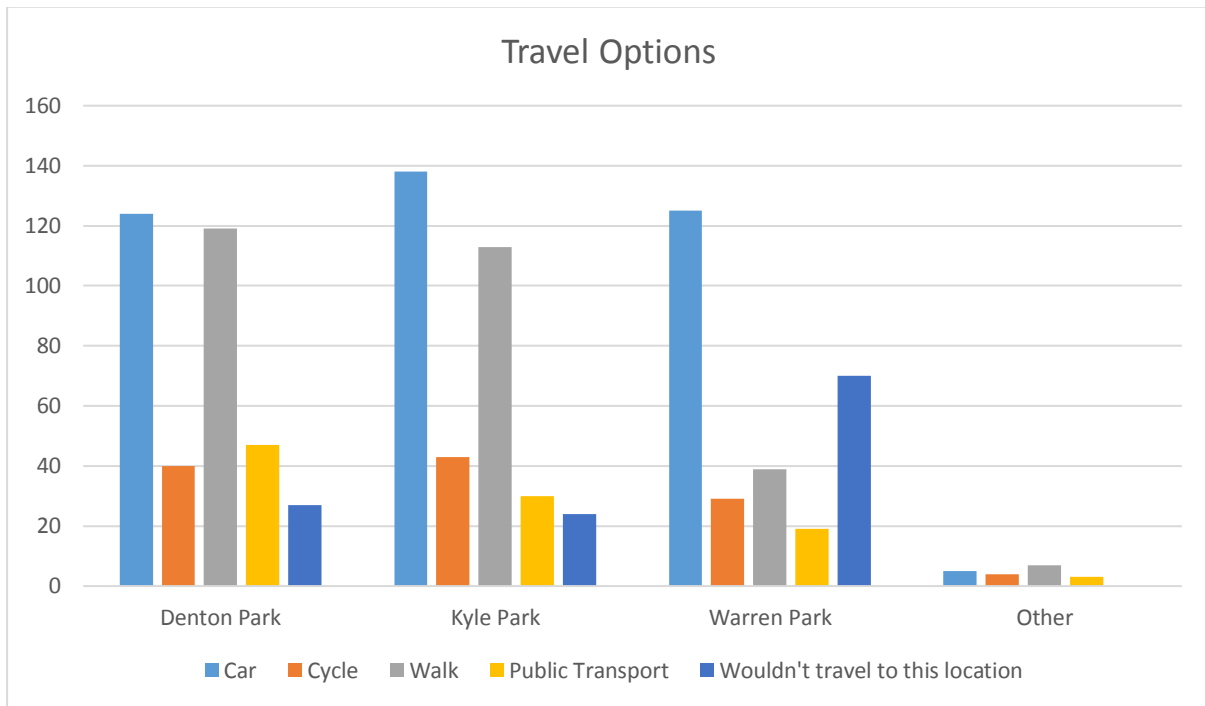
LIBRARY	CUSTOMER SERVICES	POOL/FITNESS FACILITIES
Meetings for community groups	Tend to use online	Swimming
Play areas for children	Pay rates	Facility well overdue
Information	Get Council information	Fitness
Books	Make payments	Visit with grandchildren

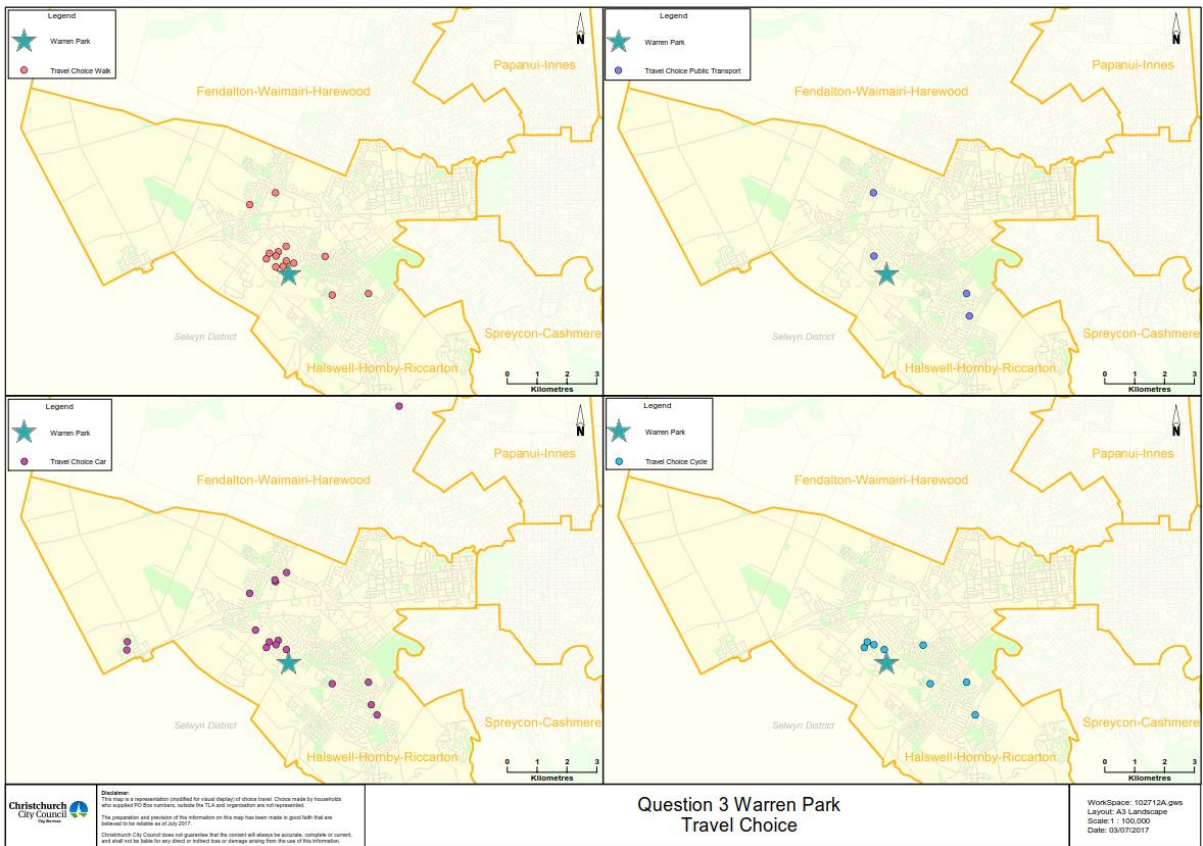
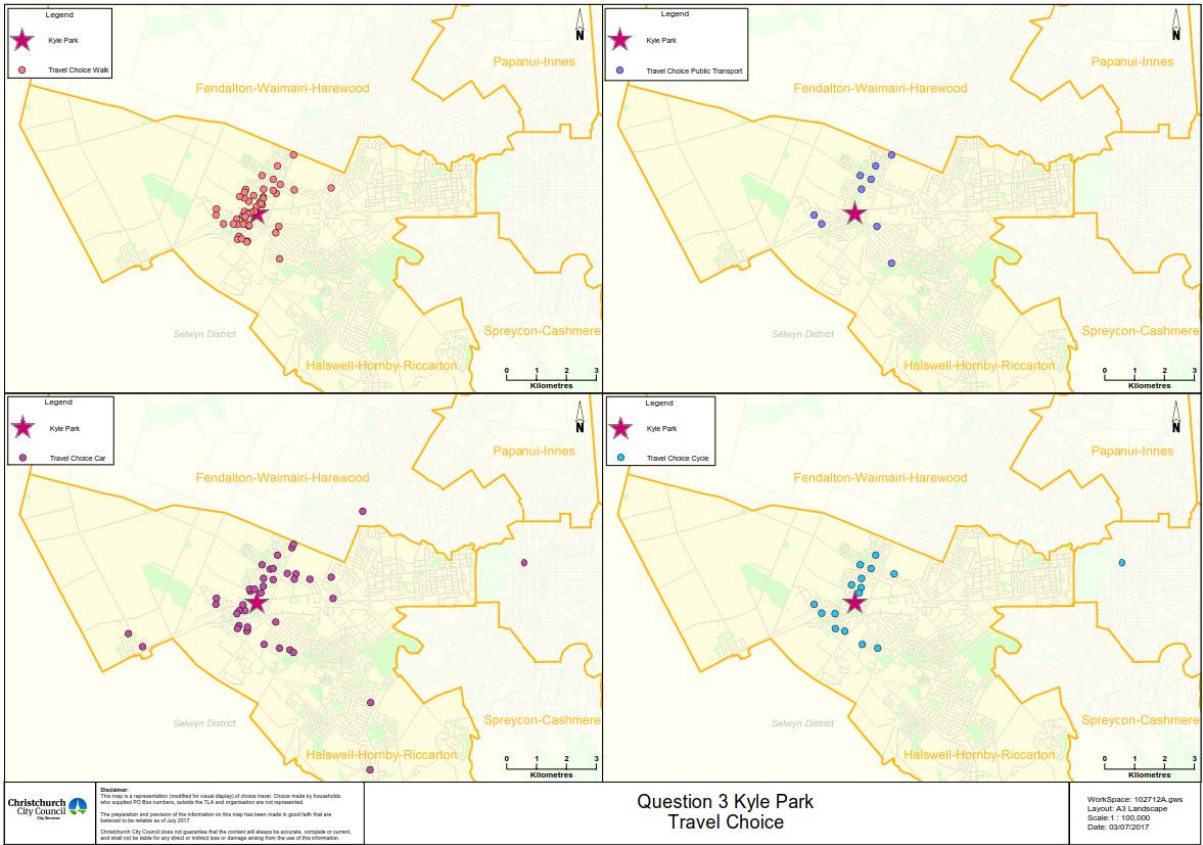
LIBRARY	CUSTOMER SERVICES	POOL/FITNESS FACILITIES
Research	Registering the dog	Fitness classes
Take children to the library	Reporting any problems or graffiti	Pool needs to be designed well for the elderly
Quiet space to sit and read	Get information on walks and local services	Hydrotherapy pool
Extracurricular activities for schools	On site cafe	Lap pool/lane swimming
Free internet and public PCs	Building consents	Pilates classes
Photocopying	Bus information	Swimming lessons for children
Place to study		Gym
Rhyme Time, Baby Times and Story Times		Training
Place for primary school, high school and university students to study		Yoga
Computer games		Exercise for the elderly
National newspapers		Social swimming
Spaces for kinesthetic learning		Circuit
Books to be downloaded onto chromebooks or phones/tables		Hang out with friends
WiFi		Steam and spa
Accessible to those with mobility needs		Aquacise
Catering/demo cooking area like Halswell		Hydroslides
Free family events		Place to bring young people
DVD's		Basketball court – growing sport in the area
		Adult wave pool
		Picnic/BBQ area
		Indoor and outdoor pools
		Accessible to those with mobility needs
		Sports club fitness/swimming

Question 3

TRAVEL FACILITIES

How would you travel to.....? (please select all responses that apply)





The feedback received showed a strong preference for travel by car to all three parks, while walking also rated very highly as a travel choice to both Denton Park and Kyle Park. Comments related to access to public transport being important was received from a large number of submitters for all sites, including Environment Canterbury, CDHB and other community groups.

Feedback also suggested a large number of submitters (70) would not travel to Warren Park if a facility was placed there.

Question 4

OTHER COMMENTS

Please provide any other comments you have on this proposal

Co-located facility that will be the hub of the community – the desire for a co-located facility was very strong. The community wanted the facility to be a central hub where both the library and customer services and the leisure centre were all in one place and complemented other activities in the near vicinity. Denton Park and Kyle Park rated particularly strongly in this area in terms of providing a central hub. We were asked to also look at opportunities to provide for both indoor and outdoor recreation. A strong sense of community and a place for this to be strengthened also came through in the feedback received.

Young people in the community – feedback indicated there were not a lot of activities available for young people in the south west area. This project was seen as an important opportunity to ensure that, when planning the facility, to ensure that youth activities are considered and that the location was central and where young people hung out.

Hornby profile - a new facility in Hornby would raise the profile of Hornby within the south west and the wider city. It was noted that a new facility would also bring more people into the area.

Whichever site is chosen we need to carefully consider the impacts on existing users and ensure that they are well catered for – for all options we received very strong feedback that whatever site is selected, any displaced sports clubs or facilities are provided with alternative arrangements. Feedback was very clear on the importance and strength of the local sports club within the community and for the young people. There is very strong support to ensure that no sports clubs are disadvantaged by the new facility.

Opportunity to reduce graffiti, vandalism and litter – feedback received advised that currently both Denton Park and Kyle Park experience differing levels of graffiti and vandalism. With the introduction of a new facility on either site it was seen that with more activity and community using the area that the flow on effect would be a reduction in graffiti and vandalism. Safety and security was also an important consideration. In relation to Kyle Park, it was also suggested that this project would be an opportunity to remediate the contaminated land.

Parking and traffic issues need to be well thought out with consideration to the impact on already congested areas – parking and traffic issues were commented on numerous times especially in relation to Denton Park, with its close proximity to both Main South Road and The Hub. It was seen as already heavily congested and had serious parking issues. This was a reason that a number of submitters selected either Kyle Park or Warren Park.

Access to public transport is very important – while public transport did not rate as high as car travel or walking, it was still commented on by many submitters that this facility needs to be accessible to public transport. A submission from Environment Canterbury did advise that Denton Park is within 200 metres of The Hub Hornby which is served by Yellow Line, Routes 125, 130, 140 and 960. These services provide good connections to nearby suburbs including Hornby, Hei Hei and Islington and beyond.

All sites have accessibility issues which will need to be addressed – all three sites have different issues and concerns that were raised in relation to accessibility. While Denton Park raised the most concerns in this area due to the proximity of The Hub and Main South Road, both Kyle Park and Warren Park also received comments about accessibility. Kyle Park received feedback that submitters saw this as a good option in terms of accessibility while other feedback suggested the opposite. Warren Park was identified as being the most accessible although the impact on a quiet street and residential properties was a concern.

Local schools can use these facilities so proximity to schools was important – many submissions talked about the new facility being able to be used by the schools in the area. This was specifically noted in those submissions that supported Kyle Park as their preferred location.

SUMMARY

- Co-location of the facilities received significant support from the community and will be the preferred option. The opportunity to have an integrated hub with accessibility to all facilities in one place supported the community's desire for a "central heart" in Hornby. Feedback also identified that the new facility can provide a sense of community, and a resource that catered for all ages and sectors of the community. This project was also seen as an excellent opportunity to provide more activities for the young people in this community, while also ensuring access for local schools in the area.
- Whichever location is selected then Council need to ensure that no sports clubs are disadvantaged and that we work very closely with each club to support any change to current facilities and operations. The sports clubs in the Hornby area are an integral part of this community.
- Traffic congestion and parking issues need to be seriously considered and addressed when planning for the new facility so any current situation is not made worse, and if possible it could be an opportunity to address some of the current issues.
- Submissions showed that this community are looking forward to having a new facility and want to ensure that it offers the best for their community with the least impact on sports clubs, traffic congestion and parking. This is an opportunity to lift the profile of Hornby and also address some of the unsavory activity that is currently happening in some of these parks.
- Access to public transport was considered very important in the feedback received while walking featured strongly in the feedback received from the travel options assessment.