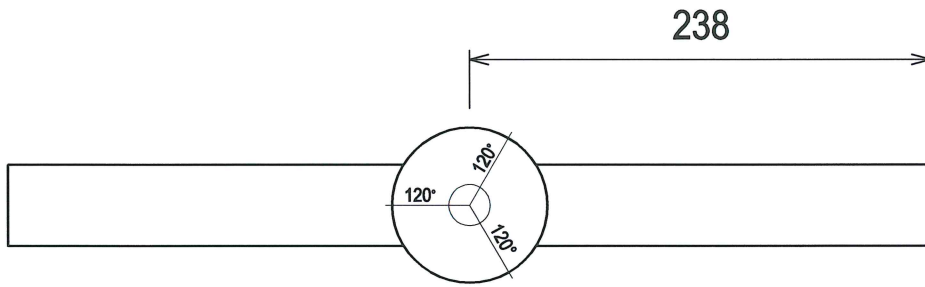
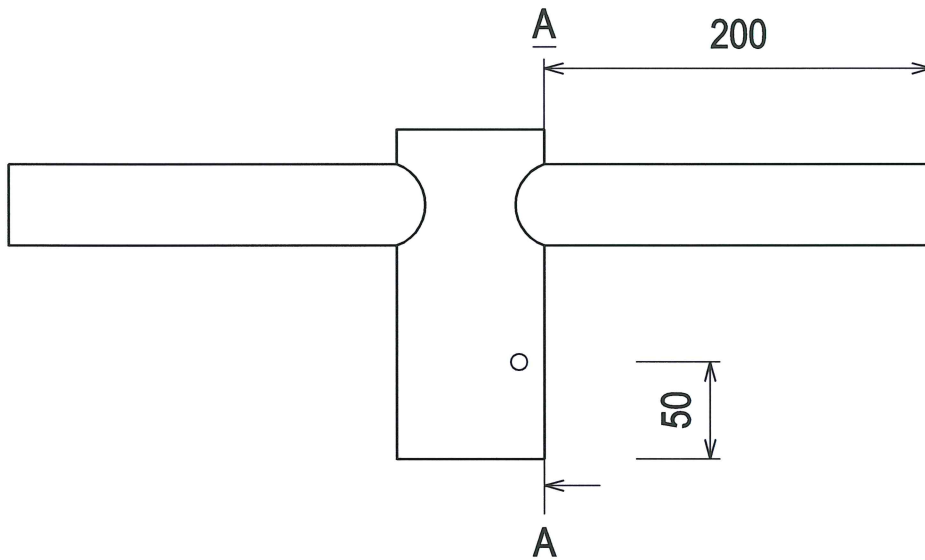


CHRISTCHURCH CITY COUNCIL SPECIFIED LIGHTING EQUIPMENT SIZES

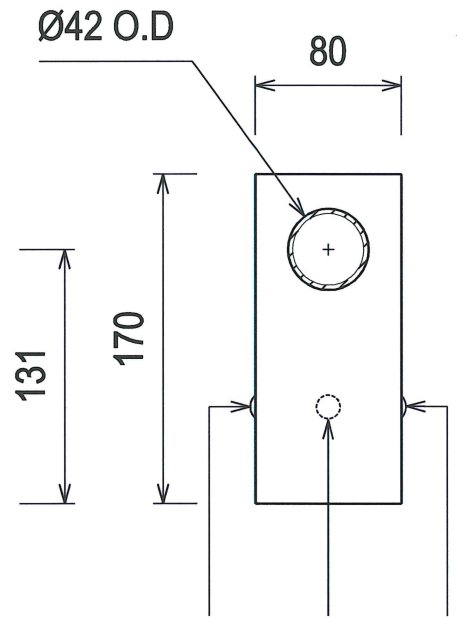


PLAN VIEW



PROVIDE 3 OFF TAPPED HOLES AT
120° CENTRES FOR 3 OFF M10 SET SCREWS

ELEVATION VIEW



PROVIDE 3 OFF M10
SET SCREWS

SECTION VIEW A-A

PA76 - TWIN POLE TOP ADAPTOR FOR Ø76 O.D SPIGOT

SIDE ELEVATION, PLAN VIEW & SECTION VIEW (A-A) - NTS - Dimensions in 'mm'

NOTES:

1. THESE DRAWINGS ARE NOT CONSTRUCTION DRAWINGS.
2. ALL EQUIPMENT IS REQUIRED TO BE APPROVED BY THE CHRISTCHURCH CITY COUNCIL. FULL CONSTRUCTION DRAWINGS, SPECIFICATIONS & PS1 PRODUCER STATEMENTS ARE TO BE PROVIDED BY THE MANUFACTURER AS PART OF THE APPROVAL PROCESS.
3. EXPECTED DESIGN LIFE OF THE ADAPTOR TO BE MINIMUM 20 YEARS SERVICE LIFE.

PRELIMINARY COPY
NOT FOR TENDER USE

REV	DESCRIPTION	DATE
A	ORIGINAL ISSUE	01/05/13

TWIN POLE TOP ADAPTOR
PA76 - FOR DIA.76mm SPIGOT

REVISION	SIZE	SCALE	DRAWING NUMBER	SHEET
A	A4	NTS	012	1/1