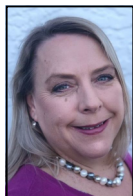


Christchurch City Council
Innes Ward of the Papanui-Innes Community Board
Electing 2 Members



Jo BYRNE

Independent

My principal place of residence is in the Innes Ward of the Papanui-Innes Community Board area.

I am completing my second term advocating for my community on the Papanui Innes Community Board. I am experienced, independent, committed and local. My voting history shows I listen to, and support our community.

I am also a part time Speech Language Therapist working with children and young people with disabilities, and a single mother of two primary aged children. I've just finished a term on their BOT at St Francis of Assisi Catholic School in Mairehau.

After working tenaciously for the Flockton Community to get flooding mitigation completed, I continue to work for the wider community supporting a variety of issues including traffic, roading, supporting our pool group, increasing accessible play equipment in ward playgrounds, educational equity and access, community facility issues, our environment, to mention just a few.

I want our community to be a wonderful and safe place for everyone - I appreciate your support and vote.